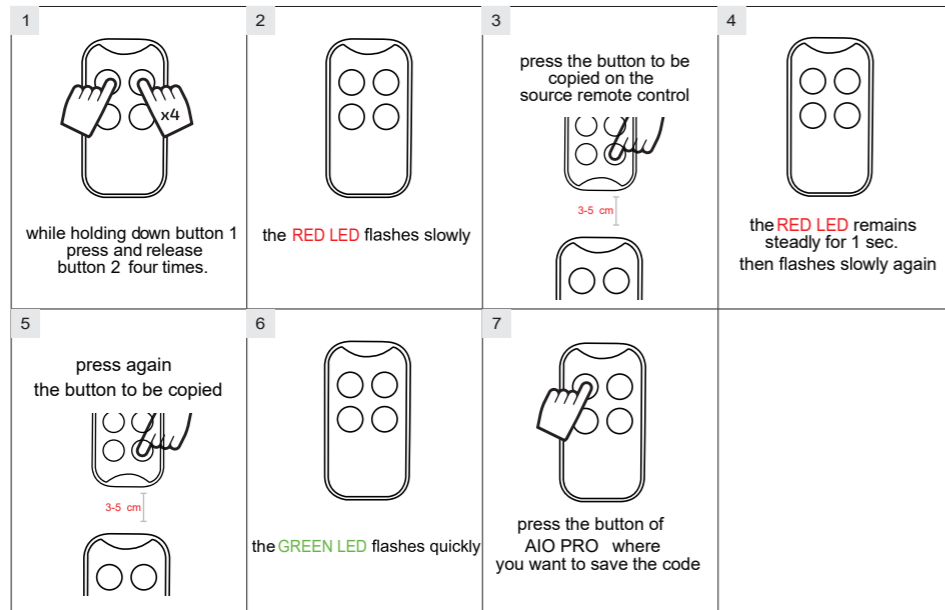


Frequency from 433,12 to 434,72 MHz (emitted power: 14dbm ERP)
Frequency from 868,05 to 868,55 MHz (emitted power: 14dbm ERP)

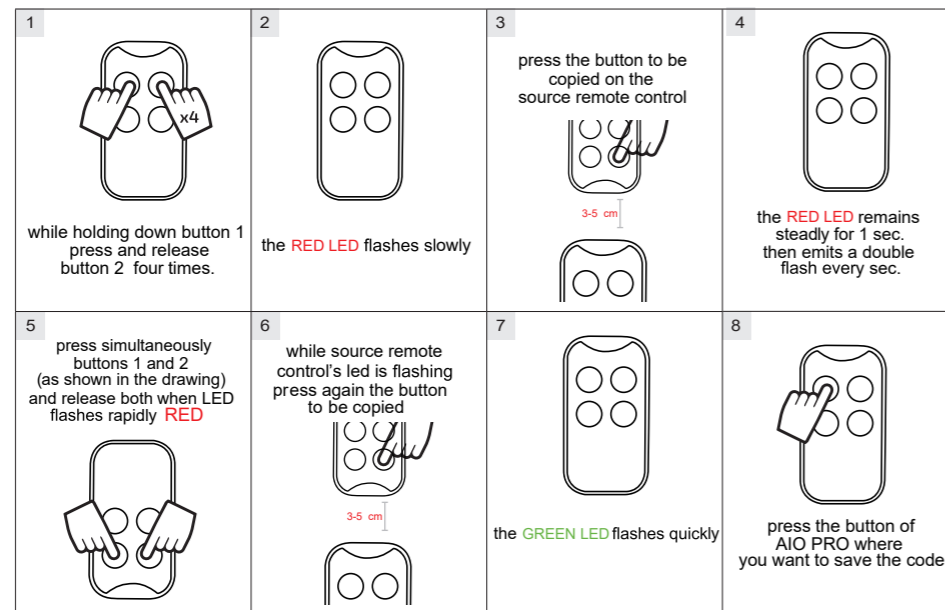
RCS means rolling code simple
RCC means rolling code complex, seed code needed
SC means simple coding, can work after duplicating



RCS/SC(If the code is a FIX CODE OR ROLLING SIMPLE)



RCC(If the code is a ROLLING COMPLEX)



COMPATIBILITY LIST

ACM TX2, TX2 COLOR, TX4	RCS	ERREKA IRIS, ROLLER 2, ROLLER 433, ROLLER 868, SOL433, SOL868, VEGA 433, VEGA 868	RCC	ROPER NEO	RCC
ADYX TE4433H BLUE, 433-HG BRAVO	RCC	FAAC TML 433SLH, DL 868 SLH, XT 868 SLH, XT 433 SLH, T 868 SLH, T 433 SLH, XT 868 SLH BLACK, XT 433 SLH BLACK	SC	ROPER GO ROPER, GO MINI ROPER	RCS
AERF COMPACT, HY-DOM, MERCURI B, MERCURI C, SABUTON, MARS, SATURN, ST3/N, TERRA, TMP-1, TMP-2, UNITECH	RCC	FAAC XT 433 RC, TE433HG, XT4 433 RCBE	RCC	SABUTOM BROOVER, BROSTAR	RCC
ALLMATIC BROWN, BROWN RED, BRO.OVER, PASS, MINIPASS, TECH3, FOR4	RCC	FADINI JUBI-SMALL, JUBI 433, DIVO 71/4	RCC	SEA HEAD 433, HEAD 868, SMART DUAL COPY	RCC
APERIO GO, GO PRO, GO MINI	RCS	GENIUS AMIGO JA332-JA334 868, AMIGOLD 868, KILO 433 JLC, KILO 868 JLC	SC	SEAV BE HAPPY RS, BE SMART	RCS
APERTO (Sommer) 4020-TX03-434, TX02-434-2, TX02-868-2	RCS	GENIUS BRAVO, ECHO	RCC	SECULUX NEO	RCC
APRIMATIC TR, TM4, TXM	RCC	GIBIDI AU1600, AU1600 WOOD, AU1680, AU1680 WOOD, DOMINO, MAKO	RCC	SILVELOX MHz 2007, QUARZ SAW	RCC
AVIDSEN 104251, 104250, 104250 OLD, 104250 RED, 104257, 104350, 654250, TX4 114253	RCS	HORMANN HS 868 - Bi Secur	SC	SIMINOR CVXNL, MITTO	RCC
BALLAN FM400, FM400E	RCS	JCM NEO, TWIN	RCC	SIMINOR SIM433	RCS
BENINCA TO, GO, WV, TWV, ROLLKEY, APPLE, LOTWCV, CUPIDO, TO.GO, QV, HAPPY VA, TO.GO, VA	RCC	JCM GO, GO PORTIS, GO NORTON, GO MINI	RCS	SOMFY K-EASY, K-EASY NEW, K-EASY OLD, MITTO, KEY GO RTS, TELIS RTS, KEYTIS RTS, KEYTIS RTS NS, ALARMA	RCS
BENINCA IO	RCS	KBLUE ETH-TEL01	RCS	SOMMER 4010, 4011, 4014 TX03-434-2, 4013 TX03-434-4, 4020 TX03-868-4, 4026 TX03-868-2, 4022 TX02-434-2, 4025 TX02-868-2, 4031 TX08-868-4	RCS
BFT MITTO, MITTO M, MITTO RCB, MITTO A, TRC, GHIBLI, MURALE, KLEIO	RCC	KEY 900TXB-42R, TXB 44R, SUB 44R	RCS	STAGNOLI KALLISTO, VENUS AV223	RCS
CARDIN TRQ S449, TRQ S449 GREEN (PRECODE), TXQ S449, TXQ S449 GREEN, TRQ S486, TXQ S486, S437 TX, XRADO	RCC	KING GATES CLIPPER, STYLO	RCC	TAU 250K-SLIMRP, 250K-SLIMR, 250T-4RP	RCC
CASALI GENIUS/CASALI A252RC	RCC	KLING KUA, KUA E, KUA S	RCS	TELCOMA FM400E, FM400	RCS
CHAMBERLAIN/LIFT MASTER/MOTOR LIFT 953ESTD, 371 LM, 971LM, 84330E, 94334CE, 94333E/94334E/94335E, 9747E, 1A5639-7, 1A5477, 1A6487, 132B2372, 94330EML/9333EML/94335EML, 84330EML/84333EM - L/84335EML, 8747EML	RCS	LABEL SPYCO	RCC	TOR LIFT TORMIT4	RCS
CLEMSA MUTANCODE, T, T-8, E-CODE N	RCS	LIFE FIDO	RCS	V2 TSC, TXC, TRC, HANDY, PHOENIX, PHOX 433, PHOENIX 868, PHOX 868	RCC
CLEMSA Attenzione! Codice Fisso MASTERCOD MV	SC	MHOUSE TX3, TX4, GTX4	RCC	VDS ECO-R, TRQ P	RCC
COMUNELLO KEEP	RCS	MOOVO MT4G	RCC		
DASPI ZERO RC	RCS	NICE SMILO, FLOR-S, VERY-VR, FLOR-S ERA, ONE(ON), ON ERA, INTI, ERGO, PLANO, ONE (ON FM)	RCC		
DEA SYSTEM PUNTO 278, GOLDR, GENIE R 273, GENIE R-GT2M, MIO TR, GT2M, TRN	RCS	NORMSTHAL RCU 2/4 K, EA 433 2/4 K	RCS		
DITEC/ENTREMATIC BIXLP, GOL4, BIXLG, ZEN	RCC	NORTON NEO, TXCD	RCC		
DOORHAN TRANSMITTER 4	RCS	NORTON GO NORTON, GO MINI NORTON	RCS		
DOORMATIC MILENY, MILENY-EVO	RCS	NOVOFERM MCHS, MICRO-NOVOTRON 502, MINI-NOVOTRON 504, MICRO-NOVOTRON 502, MICRO-NOVOTRON 504, MICRO-NOVOTRON 31, MICRO-NOVOTRON 51, MINI-NOVOTRON 30, MINI-NOVOTRON 50, MNHS, MINI NOVOTRON 522	RCS		
ECOSTAR RSC, RSE, RSZ	RCS	O&O TX, T.COM R4-2, T.COM R8-2, TWIN, TX (NEO)	RCC		
		PRASTEL MTE, MPSTLE, MPSTP2E, TCE, BFOR, TRQ-P, SLIM-E	RCC		
		PUJOL TWIN, VARIO, VARIO MARS, VARIO OCEAN, NEO	RCS		
		RIB LITHIO	RCS		

FIX CODES

1 	2 	3 press the button to be copied on the source remote control
4 while holding down button 1 press and release button 2 four times.	5 the RED LED flashes slowly	6 press again the button to be copied
7 	8 the RED LED remains steady for 1 sec. then flashes slowly again	9 the GREEN LED flashes quickly
press the button where you want to save the code		

ROLLING SIMPLE

1 	2 	3 press the button to be copied on the source remote control
4 while holding down button 1 press and release button 2 four times.	5 the RED LED flashes slowly	6 press again the button to be copied
7 	8 the RED LED remains steady for 1 sec. then flashes slowly again	9 the GREEN LED flashes quickly
press the button where you want to save the code		

ROLLING COMPLEX

WARNING: VERIFY IF THE REMOTE CONTROL IS A MASTER. Pressing any button, the LED has to emit a double flash instead switch on as a fixed light.

FAAC TML 433SLH - DL 868 SLH - XT 868 SLH - XT 433 SLH - T 868 SLH - T 433 SLH - XT 868 SLH - BLACK - XT 433 SLH BLACK		GENIUS AMIGO JA332 - JA334 868 - AMIGOLD 868 -KILO 433 JLC - KILO 868 JLC	
1 	2 	3 press the button to be copied on the source remote control 	4 while holding down button 1 press and release button 2 four times.
5 the RED LED remains steady for 1 sec. then emits a double flash every sec.	6 press simultaneously buttons 1 and 2 (as shown in the drawing) and release both when LED flashes 	7 while LED flashes press the button to be copied 	8 the RED LED remains steady for 1 sec. then emits a double flash every sec.
press the button where you want to save the code			

AVIDSEN 104251 - 104250 - 104250 OLD 104250 RED - 104257 - 104350 654250 - TX4 114253		V2 TSC - TXC - TRC -HANDY PHOENIX - PHOX 433 - PHOENIX 868 - PHOX 868	
1 	2 	3 press the button to be copied on the source remote control 	4 while holding down button 1 press and release button 2 four times.
5 the RED LED remains steady for 1 sec. then emits a double flash every sec.	6 press again the button to be copied 	7 the GREEN LED flashes quickly	8 press the button where you want to save the code

ROLLING 128 BIT

WARNING CHECK THE HORMANN'S LED COLOUR BY PRESSING ANY BUTTON. IF IS RED PLEASE FOLLOW "FIX CODE" PROCEDURE, IF IS BLUE KEEP FOLLOWING THIS PROCEDURE.

HORMANN HSE - 868 Bi Secur		1 	2 	3 Press and hold the desired button on the Hormann remote control. Its led will light up steady blue for a few seconds then it will turn off for a moment and it will switch to emitting red and blue light alternately 	4 after about 7 seconds the GREEN LED flashes quickly
press the button where you want to save the code		WARNING: WILL NOT BE POSSIBLE TO CREATE FURTHER COPIES USING A AIO PRO AS SOURCE REMOTE CONTROL, IT ALWAYS HAS TO BE AN ORIGINAL ONE!			

BFT MITTO - MITTO M - MITTO RCB MITTO A - TRC - GIBLI - MURALE - KLEIO			
1 	2 	3 press the button to be copied on the source remote control 	4 the RED LED remains steady for 1 sec. then emits a double flash every sec.
5 press simultaneously button 1 and 2 on BFT remote control (source code) 	6 the GREEN LED flashes quickly	7 press the button where you want to save the code	