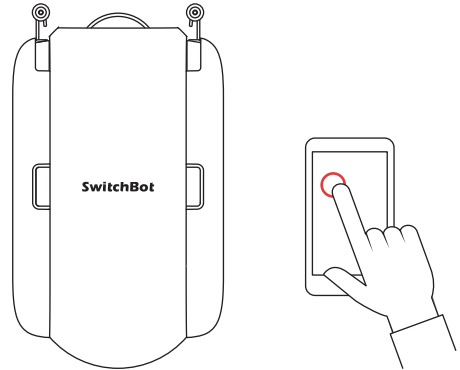


SwitchBot Curtain U Rail 2

User Manual



www.switch-bot.com

V5.0-2203

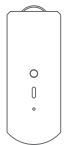
※ Please read this user manual carefully before using your device.

Contents

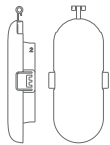
1. Package Contents	02
2. List of Components	03
3. Preparation	04
4. Installation	05
5. Usage Methods	13
6. Settings	17
7. Charging, Firmware, and Restoring Factory Settings	18
8. Specifications	20
9. Return and Refund Policy	22
10. Contact and Support	23

For more support please visit support.switch-bot.com

Package Contents



Main Unit



Hook Pair (U Rail 2)



Hook Helper



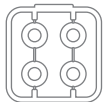
Type-C Cable



Hook Wheel

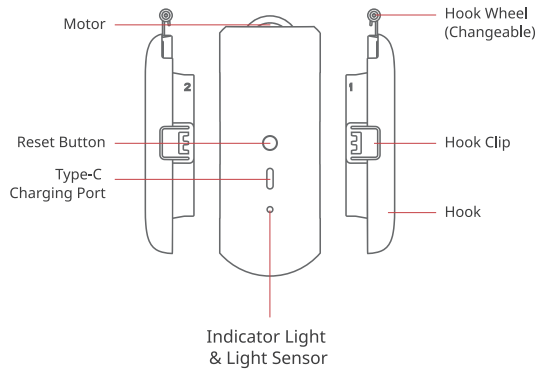


Clip



Hook Wheel Attachment

List of Components



Preparation

You will need:

- A smartphone or tablet using Bluetooth 4.2 or later.
- The latest version of our app, downloadable via the Apple App Store or Google play store.
- A SwitchBot account, you can register via our app or sign in to your account directly if you already have one.
- A fully charged SwitchBot Curtain.

Please note: if you intend to use the Cloud Service feature, you will need a SwitchBot Hub Mini (sold separately).



iOS 11.0+



Android OS 5.0+

Installation

Step 1: Add SwitchBot Curtain to your device page

Create a SwitchBot account or sign in from the app's Profile page. On the Home page, tap the top right "+" sign, select the Curtain logo and follow the instructions to add SwitchBot Curtain to your account.

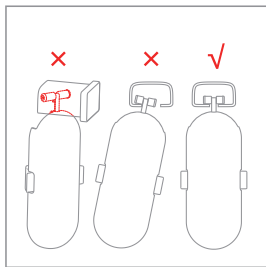
Step 2: Install your device on your curtain track

Find the best matching Hook Wheel

Our Hook pair has been attached with a set of Hook Wheels upon delivery. In the box, there are also several sets of Hook Wheels that are sized differently and are exchangeable. Please follow the steps below to find the best matching set of Hook Wheels.

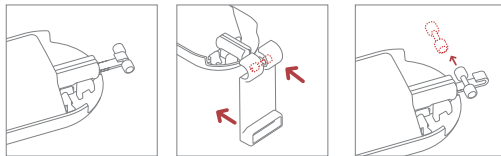
1. Insert the Hook provided onto your curtain track and rotate it by 90°. Slide it left and right to see if it works smoothly, then tilt your device back and forth to make sure it fits.

- If the Hook cannot be inserted or rotated on your curtain rail, replace with a smaller pair of Hook Wheel.
- Try pull the Hook towards one side and tilt it, if it falls easily from the curtain track, you need to replace with a bigger pair of Hook Wheels.
- If you feel that your device fits sufficiently, there is no need to replace.

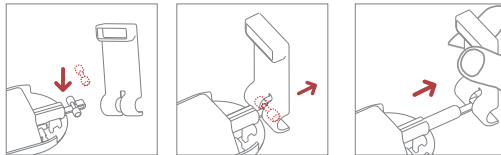


2. Replacing the Hook Wheels

- ① Detach the existing Hook Wheels from the Hook (use Hook Helper for easier setup).



- ② Grab your desired size pair of Hook Wheels. Adjust them until you can see the metal bar. Insert the metal bar into the tip of the Hook. You should hear a click once it is firmly attached.

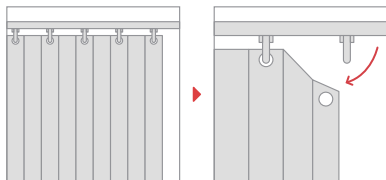


- ③ Repeat the same steps to change the pair of Hook Wheels on the other Hook.

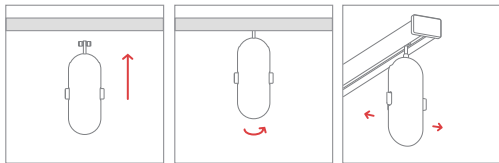
Installing SwitchBot Curtain on your curtain track

Method 1: Installation for Common Models

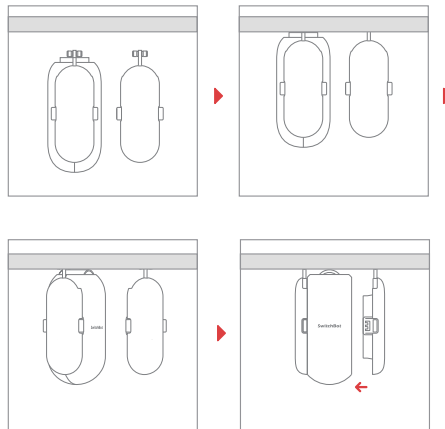
① Close your curtain and then detach the last curtain hook from the track.



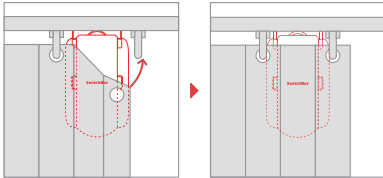
② Insert the separate Hook into the curtain track and rotate it by 90°. Slide it left and right to see if it works smoothly, tilt it back and forth to double check if it fits inside the track. If you tried with every pair of Hook Wheels provided and none of them work as expected, please contact our customer support at support@wondertechlabs.com.



③ Insert both main units of SwitchBot Curtain (with one Hook attached) and the separate Hook onto the curtain track simultaneously, rotate them by 90°, put the other Hook onto the Main Body. The SwitchBot logo should face your room.



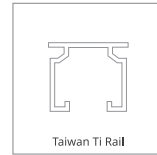
- ④ Put your curtain back in place and put SwitchBot Curtain behind your curtain.



Method 2: Installation for Specific Models

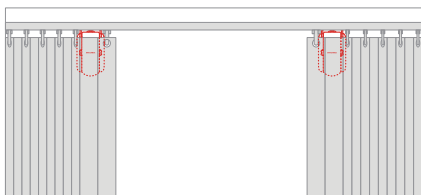
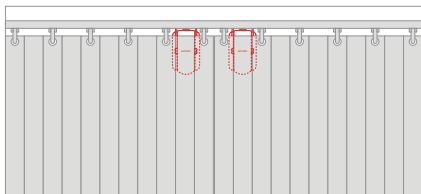
If SwitchBot Curtain does not work smoothly on your curtain track, or if you know the specific model of your track such as the ones shown below, this would be considered as a non-standard model track. For installation information, please visit:

<https://support.switch-bot.com/hc/en-us/articles/1500012094841>



How to Control Double-Sided Curtains

If you are using a double-sided curtain, we recommend you use two SwitchBot Curtain devices to open your curtains from the middle.



If you only purchased 1 SwitchBot Curtain, you may use the clips provided to join your curtains together and turn them into a single sided curtain.

Please note: using just 1 single SwitchBot Curtain to control a double sided curtain may affect user experience.

Step 3: Calibration

After adding and installing SwitchBot Curtain, you will need to calibrate your device in order to fit your current curtain track. Please follow guidance via our app for calibration to make sure that the actual movement of your curtain is the same as the animation on our app. You will need to recalibrate every time you change Open Mode in our app, you can reset these settings on the Settings page at anytime.

Please note: You can group two SwitchBot Curtains should you wish to open your curtains from the middle. Before you calibrate, please make sure the position of your SwitchBot Curtain devices is the same as shown via our app.

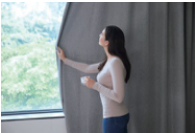
Control

App Control



Open and close your curtains with just the tap of a button. We offer intuitive app control for iOS and Android users, with weekly/bi-weekly updates. OTA firmware updates are also available to give you a better user experience.

Touch & Go



When SwitchBot Curtain senses you drawing your curtain for more than 5 cm, it will automatically start and do the work for you. You only need to pull one side of a double side curtain. Please note: you may turn off this function from the advanced settings page at any time.

*5cm lowers the possibility of false triggers by foreign objects, pets, children, etc.

Voice Control and Home Automation*

You can link multiple third-party services from your SwitchBot account, and control your SwitchBot Curtain using voice commands or scenes.

You must meet the following requirements in order to use voice control and automation

- Connect your smartphone or tablet to the internet
- Set up a SwitchBot Hub Mini (sold separately)
- Enable Cloud Services in Curtain's Settings page
- Link third-party services to your SwitchBot account

Alexa, close the curtains.

Google, close my bedroom curtains.

Hey Siri, open the living room curtains.

* Requires SwitchBot Hub Mini (sold separately)



Control with SwitchBot Remote (Sold Separately)



A wireless remote add-on to place anywhere.

Control SwitchBot Curtain using a SwitchBot Remote. There are two buttons on SwitchBot Remote and you can set an action for each of them from the app, for example, fully open/close. One SwitchBot Remote can control 2 grouped SwitchBot Curtains. Please refer to the relevant user manual for more information.

Settings

Light Sensor (Beta)

This allows you to set automations based on the illuminance level or the relative intensity of sunlight surrounding your device. This is a beta stage function and is being upgraded continuously, you can find more details inside future app releases.

Delay

You can set up 1 Delay for countdown action. You can set the countdown time, percentage of opening or closing, and Motion Mode.

Schedule

You can set up 5 Schedules locally on your device, or unlimited Schedules with a SwitchBot Hub. You can set the day, time, percentage of opening or closing, and Motion Mode.

Charging, Firmware, and Restoring Factory Settings

Charging

It takes about 6.5 hours to fully charge your device battery and this can last for up to 8 months after one full charge. You may also purchase our Solar Panel to charge using sunlight.

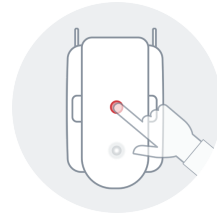
1. A 5V=1A adapter is required to charge your device.
2. Battery life is tested under conditions with a runway of 3 meters, loaded with 8 kg of curtain, opened and closed twice a day in an environment with a temperature of 25°C. Battery life may vary depending on environment conditions.
3. When you wish to charge SwitchBot Curtain with Solar Panel, illuminance level 6 is required.

Firmware

Please upgrade when prompted to make sure you device is up-to-date.

Factory Resets

Hold the reset button for 15 seconds until the LED light lights up, then release the button. If you are using a double sided curtain, you will need to recalibrate both SwitchBot Curtain units.



Caution:

You may lose all the settings after factory reset and you may need to add the device again and redo calibration.

Specifications

Color: White/Black

Material: ABS plastic with UV-Resistant coating

Product Size: 42 x 51 x 110 mm (1.7 x 2 x 4.3 in.)

Product Net Weight (Main Unit): 135 g (4.8 oz.)

Power: Type-C, DC 5V=1A, 3350 mAh lithium-ion battery or by Solar Panel¹

Battery Life: 8 months², or unlimited with Solar Panel

Connectivity: Bluetooth 5.0 Long Range

Sensor: Accelerometer, light sensor

Strength: Up to 8 kg / 17 pounds of curtain
(from controlled experiments in our lab)

Max Runway: 3 m (9.8 ft.)

Schedules: Up to 5, or unlimited with a SwitchBot Hub Mini³

Voice Control (SwitchBot Hub Required): Amazon Alexa, Google Assistant, Siri Shortcuts, SmartThings, IFTTT, and LINE CLOVA

1. Solar Panel is sold separately.

2. Battery life is tested under conditions of runway of 3 meters, loaded with 8 kg of curtain, opened and closed twice a day under 25 °C. Battery life may vary given different conditions.

3. SwitchBot Hub Plus/Mini is sold separately.

Please note: device must be used under regular temperature conditions only.

Return and Refund Policy

This product has a one-year warranty which begins from the date of purchase. The situations below may void eligibility when looking to make a return or refund.

- Intended damage or abuse.
- Inappropriate storage (including dropping or soaking in water).
- Modifying or repair of product.
- Natural wearing of product.
- Natural disasters.

Batteries are not covered under warranty.

Contact and Support

Setup and Troubleshooting: support.switch-bot.com

Support Email: support@wondertechlabs.com

Feedback: If you have any concerns or problems when using our products, please kindly send feedback from the Profile > Feedback page in the SwitchBot app.

CE Warning

Manufacturer's Name: Woan Technology (Shenzhen) Co., Ltd.

Manufacturer's Address: Room 1101, Qiancheng Commercial Center, No. 5 Haicheng Road, Mabu Community, Xixiang Sub-district, Bao'an District, Shenzhen, Guangdong, P.R.China, 518100

Product Name: SwitchBot Curtain

Model Number: W0701600

Operating Temperature: -20 °C to 60 °C

This device was tested for fixed location operations. To comply with RF exposure requirements, a minimum separation distance of 20 cm must be maintained between the user's body and this device, including the antenna. Third-party belt-clips, holsters, and similar accessories used by this device should not contain any metallic components. Body-worn accessories that do not meet these requirements may not comply with RF exposure requirements and should be avoided. Use only the supplied or an approved antenna.

The device complies with RF specifications when the device used at 20 cm from your body.

This device in compliance with the essential requirements and other relevant provisions of S.I. 2017 No. 1206. All essential radio test suites have been carried out.

This device in compliance with the essential requirements and other relevant provisions of Directive 2014/53/EU. All essential radio test suites have been carried out.

Function	Operation Frequency	Max RF output power
Bluetooth	2402MHz~2480MHz	-1.42dBm

FCC Warning

This device complies with Part 15 of the FCC Rules. Operation is subject to the following two conditions:

- (1) This device may not cause harmful interference.
- (2) This device must accept any interference received, including interference that may cause undesired operation.

NOTE: This equipment has been tested and found to comply with the limits for a Class B digital device, pursuant to part 15 of the FCC Rules. These limits are designed to provide reasonable protection against harmful interference in a residential installation.

This equipment generates uses and can radiate radio frequency energy and, if not installed and used in accordance with the instructions, may cause harmful interference to radio communications. However, there is no guarantee that interference will not occur in a particular installation. If this equipment does cause harmful interference to radio or television reception, which can be determined by turning the equipment off and on, the user is encouraged to try to correct the interference by one or more of the following measures:

- Reorient or relocate the receiving antenna.
- Increase the separation between the equipment and receiver.
- Connect the equipment into an outlet on a circuit different from that to which the receiver is connected.
- Consult the dealer or an experienced radio/TV technician for help.

NOTE: The manufacturer is not responsible for any radio or TV interference caused by unauthorized modifications to this equipment. Such modifications could void the user's authority to operate the equipment.

FCC Radiation Exposure Statement

This equipment complies with FCC radiation exposure limits set forth for an uncontrolled environment. This equipment should be installed and operated with minimum distance 20 cm between the radiator & your body.

KCC Warning

인증받은자의 상호: Woan Technology (Shenzhen) Co., Ltd.

제품명/모델명: 특정소출력 무선기기(무선데이터통신시스템용 무선기기) / W0701600

제조사 및 제조국가: Woan Technology (Shenzhen) Co., Ltd. /China

제조년월: 2020.06

인증번호: R-R-Woa-W0701600

이 장치는 보안성이 없으므로 통신보안에 위배되는 사항의 통신을 금지하며 운용 중

NCC Warning

依據低功率電波輻射性電機管理辦法

第十二條

※經型式認證合格之低功率射頻電機，非經許可，公司、商號或使用者均不得擅自變更頻率、加大功率或變更原設計之特性及功能。

第十四條

※低功率射頻電機之使用不得影響飛航安全及干擾合法通信；經發現有干擾現象時，應立即停用，並改善至無干擾時方得繼續使用。

-前項合法通信，指依電信法規定作業之無線電通信。

-低功率射頻電機須忍受合法通信或工業、科學及醫療用電波輻射性電機設備之干擾。

