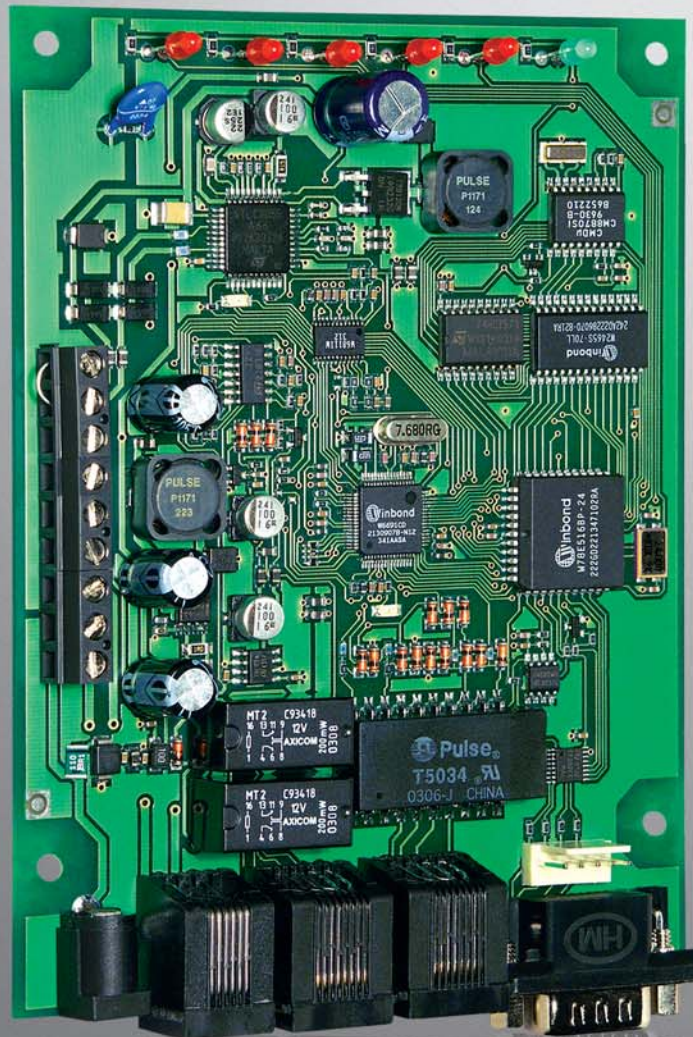


Module ISDN

Satel®

The unique solution presented by the ISDN Module was developed to support analog dialer operating alarm systems. By disconnecting from the ISDN line all remaining devices it provides excellent tamper protection.



System features

- effective alarm messaging even when other devices are occupying the ISDN line
- possibility to take over ISDN line in case of control panel initiated connection
 - definable priority
 - controlled by dedicated input
- relays used for separating other devices connected to module's telephone line
- dedicated output for interfacing with separating device for disconnecting other devices connected directly to NT
- ISDN modem
 - data transfer via RS-232
 - V.110 protocol
 - AT command set for configuration
 - separate ports for control panel and PC
- definable MSN numbers
 - separate numbers for analog and modem connections
 - from 3 to 20 digits
- settings stored in non-volatile memory
- ISDN line status monitoring
- 6 LEDs for status indication

