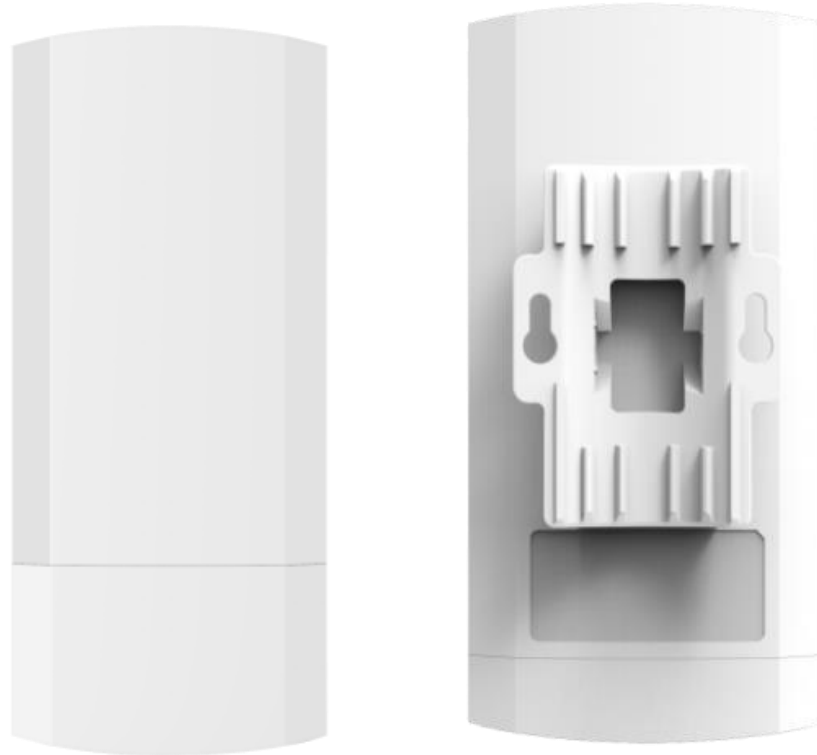




11ac 900Mbps Outdoor CPE

Model: GNT-CP530



Description:

GNT-CP530 is an economic 11ac outdoor CPE with 900Mbps data rate. Comply with IEEE 802.11b/g/n/ac standard, with 12dBi dual polarized high gain antenna, the PTP/PTMP distance is more than 2000 meters.

It support Wireless AP, Wireless Bridge operation mode for PTP/PTMP connections, with slid switch on device, easy to set GNT-CP530's operation mode, no need to access into GUI, avoid the complex setup program; With LED display, simple to set the IP address, channel and view the connected status and signal strength, save much human work and cost, make the long range wireless coverage, data transmit and wireless monitoring simple and professional.

GNT-CP530 with ABS waterproof, dustproof and sunscreen shell, temperature adaptive also; Meantime, it support 24V passive PoE, ESD protection and surge protection, ideal for outdoor use;

Most Important, GNT-CP530 support watchdog self-detection function, reboot and recover device automatically if some network attack. Besides that, it support cloud remote management and software AC controller, administrator can monitor the working status, upgrade firmware, reboot, timed reboot device through cloud server, recover and maintain device at any time and any location, operator level outdoor PTP/PTMP connection equipment.

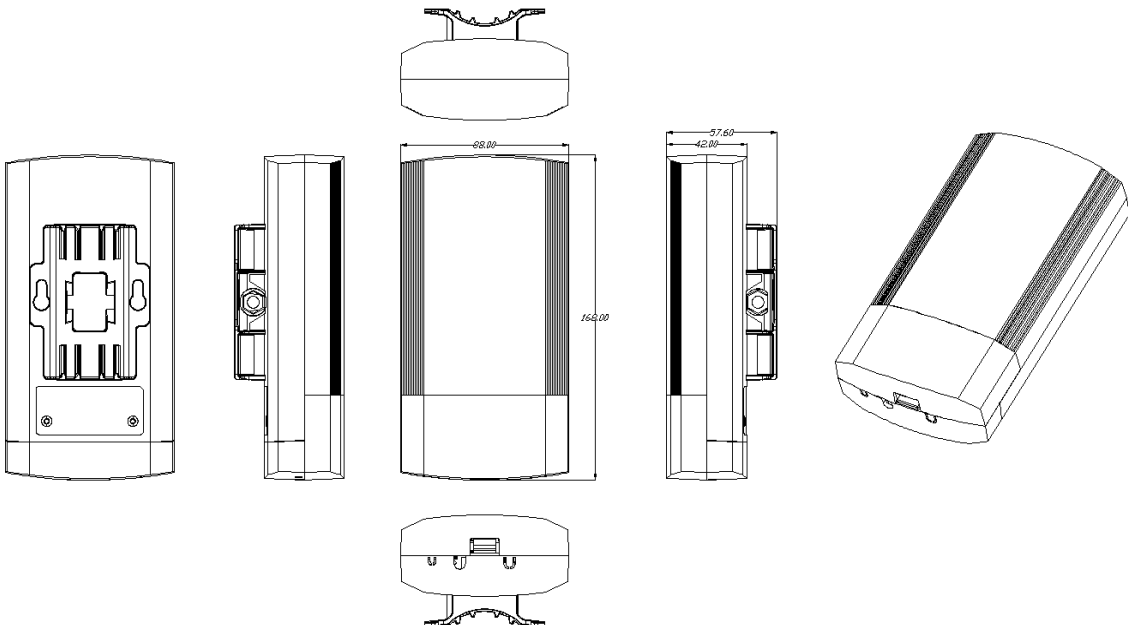


Specification:	
Hardware:	
Chipset	Media Tek: MT7628DAN+MT7613AE
DDR2	64MB
Flash	8MB
Wireless	IEEE 802.11 a / n /ac, 2T2R 900M MIMO Technology
Frequency	5.150GHz~5.850GHz
Data Rate	900Mbps
WAN	1 * 10/100Mbps RJ45 WAN Port
LAN	1 * 10/100Mbps RJ45 LAN Port
Buttons	1 * Slid Switch to change the operation mode, H mean host, AP mode; C mean client, Repeater mode
	1 * LED display with F(function) and S(select) buttons, show and set operation mode, channel, IP address, signal strength.
	1 * Reset Button, press 1 second, work with slid switch to change the operation mode; Press 10 seconds, the device will revert to factory default settings.
Antenna	12dBi Panel Antenna
RF Power	≤ 21dBm
PoE Power	POE 24V/0.5A
Power consumption	< 8W
Waterproof Level	IP65
ESD Protection Standard	Contact Discharge: ±6KV; Air Discharge: ±8KV
Surge Protection Standard	Common mode:±2KV; Differential mode:±1KV (Optional: Common mode:±4KV; Differential mode:±2KV)
LED Light	Sys(System), WAN, LAN, Wi-Fi
Size	168mm*88mm*57.6mm
Working Temperature	-30°C ~ 55°C
Storage Temperature	-40°C ~ 70°C
Humidity	5% ~ 95% (Non-condensing)
Firmware	
Operation Mode	Wireless AP, Wireless Bridge
Protocol/Standard	IEEE 802.3(Ethernet)
	IEEE 802.3u(Fast Ethernet)
	IEEE 802.11b/g/n/ac(5.8G WLAN)
Other Features	SSID: up to 4
	Support SSID hide



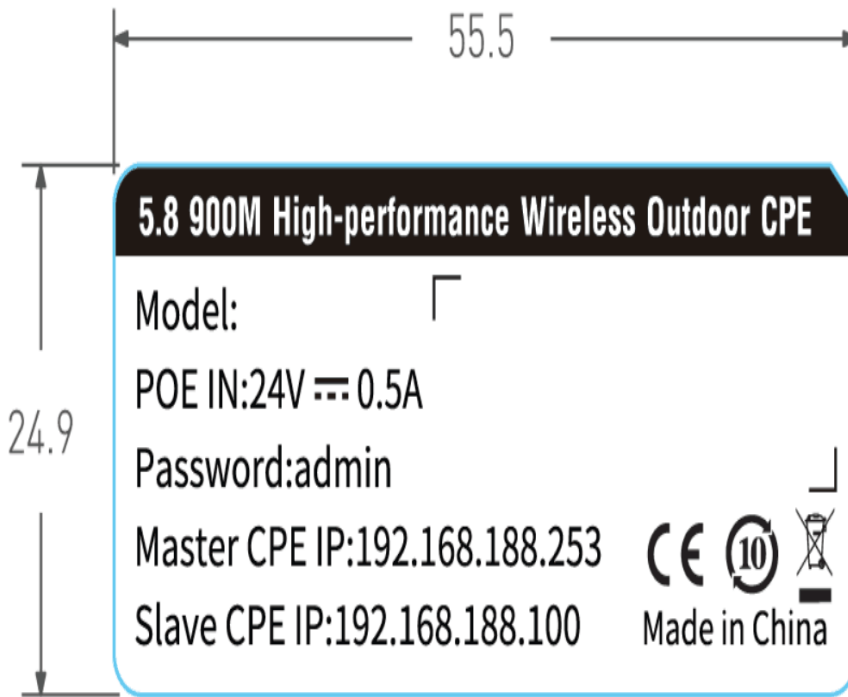
Other Features	Wireless security: OPEN、WPA、WPA2、WPA-PSK、WPA2-PSK
	Wireless MAC filter: support white list(32)
	Wi-Fi timed off/on
	User isolation: wireless network isolation, AP insulation
	RF power adjustable
	Support Watchdog Technology
	With Wi-Fi Channel Analysis Tool
	Central Managed by WLAN Controller in AP Mode Remote Managed by Cloud Server in AP and Repeater Mode
Device Management	Backup the configuration information
	Restore the configuration information
	Revert to factory default
	Restart: Immediately restart or timed restart
	Firmware upgrade
	Time management: system time management and synchronization time.
	System Log
Package:	
GNT-CP530M unit	
24V/0.5A PoE Adapter	
User Manual	
LAN Cable	

Product Structure:

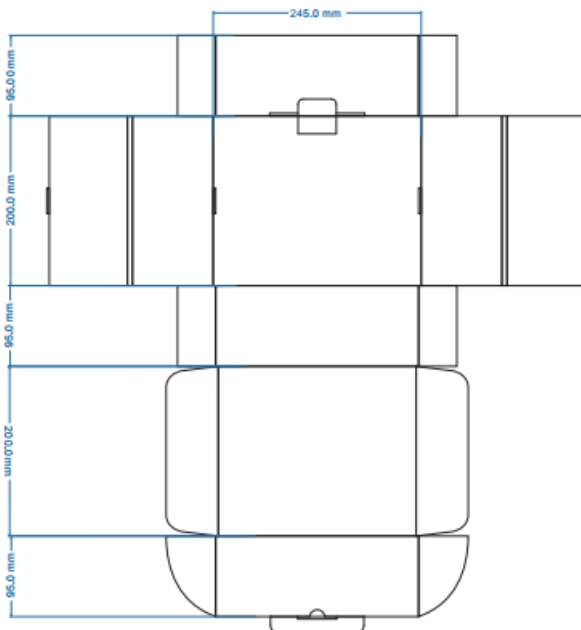




Product Sticker:

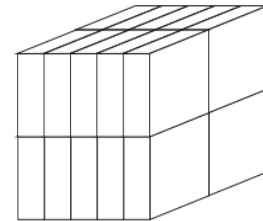
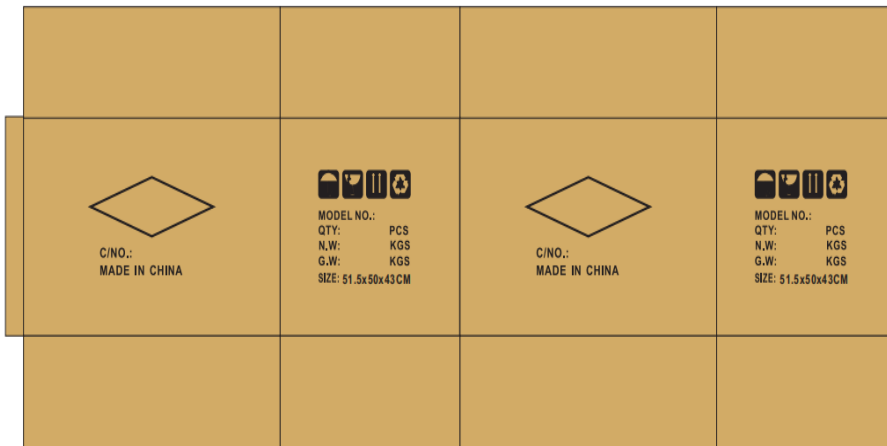


Packing Box:



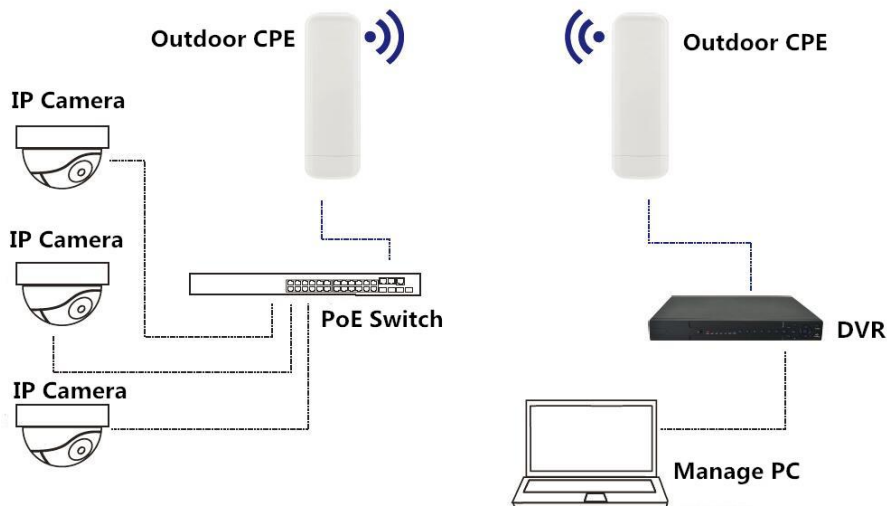


Carton box picture:



Working Diagram:

Point to Point connection:



Point to Multi-Point connection:

