

Cable ID	Summary	Test Limit	Length	Headroom	Date / Time
BELDEN CAT5E ISO	FAIL	ISO11801 Channel Class Ea	107.2 m	-3.2 dB (NEXT)	2023-01-17 16:30
BELDEN CAT5E TIA	PASS	TIA Cat 5e Channel	107.2 m	6.4 dB (NEXT)	2023-01-17 16:31
CAT6 ISO	FAIL	ISO11801 PL3 Class Ea	101.8 m	1.7 dB (NEXT)	2023-01-17 16:43
CAT6 ISO(RC)	FAIL	TIA 1005 Cat 6A Channel	101.8 m	3.4 dB (NEXT)	2023-01-17 17:44
CAT6 ISO(RC)	PASS*	TIA Cat 6 Channel	101.8 m	3.4 dB (NEXT)	2023-01-17 17:48
CAT6 TIA	FAIL	TIA Cat 6 Perm. Link	101.8 m	1.8 dB (NEXT)	2023-01-17 16:41
CAT6 TIA(RC)	PASS*	TIA Cat 6 Channel	101.8 m	3.5 dB (NEXT)	2023-01-17 17:48

Total Length:	723.4 m
Number of Reports:	7
Number of Passing Reports:	3
Number of Failing Reports:	4
Number of Warning Reports:	0
Documentation Only:	0



**Cable ID: BELDEN CAT5E ISO**

Test Limit: ISO11801 Channel Class Ea

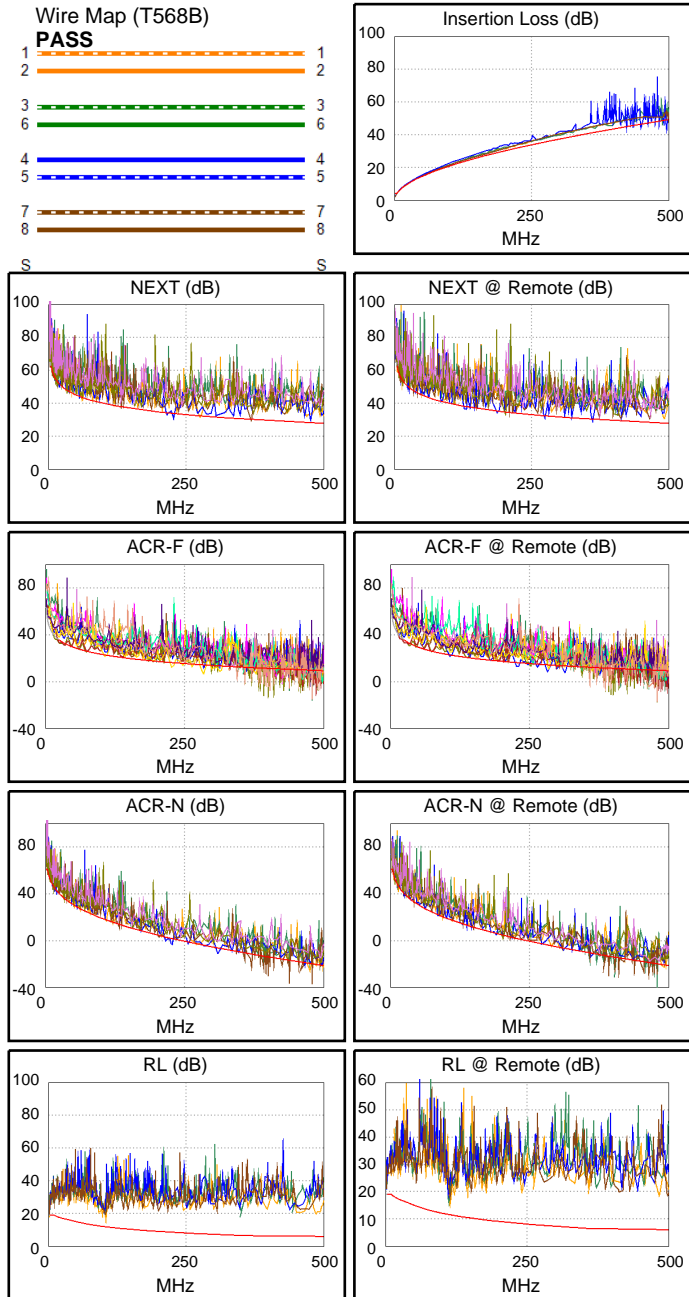
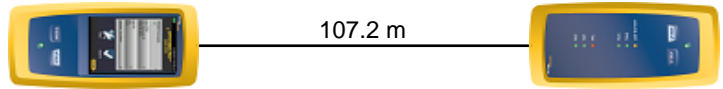
Limits Version: V7.7  
Date / Time: 2023-01-17 16:30:08  
Operator: JEDLICSKA IMRE  
Headroom -3.2 dB (NEXT 1,2-7,8)  
Cable Type: Cat 5e U/UTP  
NVP: 69.0%

Main: Versiv  
S/N: 19520277  
Software Version: V6.8 Build 6  
Calibration Date: 2022-06-21  
Adapter: DSX-602 (DSX-CHA004)  
S/N: 21450616

**Test Summary: FAIL**

Remote: Versiv  
S/N: 20020484  
Software Version: V6.8 Build 6  
Calibration Date: 2022-06-21  
Adapter: DSX-602R (DSX-CHA004)  
S/N: 21450653

Length (m), Limit 100.0	[Pair 7,8]	107.2
Prop. Delay (ns), Limit 555	[Pair 4,5]	533
Delay Skew (ns), Limit 50	[Pair 4,5]	15
Resistance (ohms), Limit 25.00	[Pair 4,5]	19.02
Insertion Loss Margin (dB)	[Pair 4,5]	<b>-23.9F</b>
Frequency (MHz)	[Pair 4,5]	479.0
Limit (dB)	[Pair 4,5]	48.2



	Worst Case Margin		Worst Case Value	
<b>FAIL</b>	MAIN	SR	MAIN	SR
Worst Pair	1,2-7,8	1,2-3,6	3,6-4,5	1,2-7,8
<b>NEXT (dB)</b>	<b>-3.2F</b>	<b>-3.0F</b>	-0.6	-1.2
Freq. (MHz)	227.5	13.6	368.0	361.0
Limit (dB)	33.8	54.4	30.2	30.4
Worst Pair	3,6	3,6	1,2	1,2
<b>PS NEXT (dB)</b>	<b>-1.8F</b>	<b>-2.6F</b>	2.0	3.7
Freq. (MHz)	61.0	13.6	476.0	490.0
Limit (dB)	40.8	51.8	25.2	25.0
<b>FAIL</b>	MAIN	SR	MAIN	SR
Worst Pair	1,2-4,5	3,6-4,5	1,2-4,5	3,6-4,5
<b>ACR-F (dB)</b>	<b>-21.0F</b>	<b>-22.5F</b>	-21.0	-22.5
Freq. (MHz)	479.0	479.0	479.0	479.0
Limit (dB)	9.7	9.7	9.7	9.7
Worst Pair	4,5	4,5	4,5	4,5
<b>PS ACR-F (dB)</b>	<b>-21.1F</b>	<b>-23.0F</b>	-21.1	-23.0
Freq. (MHz)	479.0	479.0	479.0	479.0
Limit (dB)	6.7	6.7	6.7	6.7
<b>FAIL</b>	MAIN	SR	MAIN	SR
Worst Pair	3,6-4,5	1,2-4,5	3,6-4,5	1,2-4,5
<b>ACR-N (dB)</b>	<b>-15.1F</b>	<b>-15.4F</b>	-12.8	-15.4
Freq. (MHz)	438.0	479.0	479.0	479.0
Limit (dB)	-17.0	-20.0	-20.0	-20.0
Worst Pair	4,5	4,5	4,5	4,5
<b>PS ACR-N (dB)</b>	<b>-12.7F</b>	<b>-15.2F</b>	-12.7	-15.2
Freq. (MHz)	479.0	479.0	479.0	479.0
Limit (dB)	-23.0	-23.0	-23.0	-23.0
<b>PASS</b>	MAIN	SR	MAIN	SR
Worst Pair	1,2	1,2	1,2	1,2
<b>RL (dB)</b>	3.9	3.5	3.9	3.5
Freq. (MHz)	104.5	113.5	104.5	113.5
Limit (dB)	11.8	11.5	11.8	11.5



### Cable ID: BELDEN CAT5E TIA

Test Limit: TIA Cat 5e Channel

Limits Version: V7.7

Date / Time: 2023-01-17 16:31:39

Operator: JEDLICSKA IMRE

Headroom 6.4 dB (NEXT 1,2-7,8)

Cable Type: Cat 5e U/UTP

NVP: 69.0%

Main: Versiv

S/N: 19520277

Software Version: V6.8 Build 6

Calibration Date: 2022-06-21

Adapter: DSX-602 (DSX-CHA004)

S/N: 21450616

### Test Summary: PASS

Remote: Versiv

S/N: 20020484

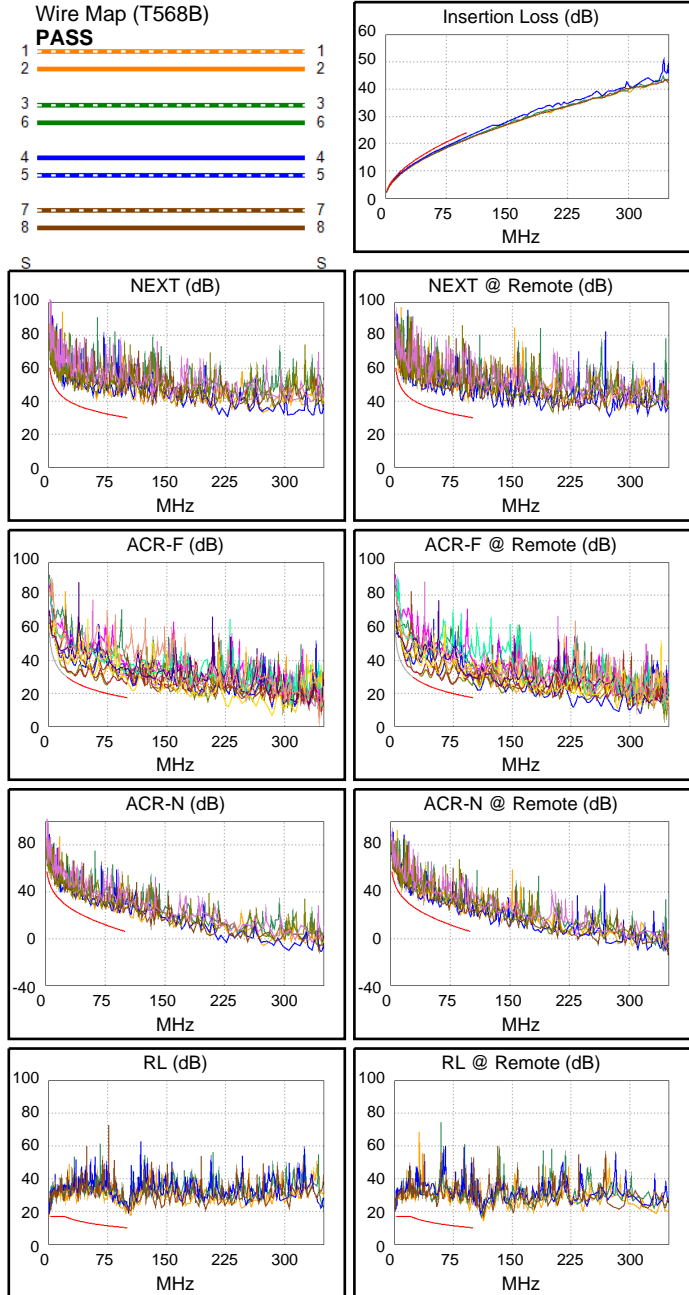
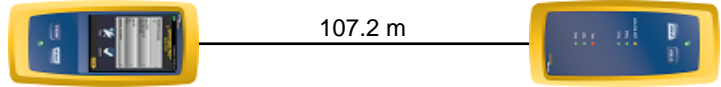
Software Version: V6.8 Build 6

Calibration Date: 2022-06-21

Adapter: DSX-602R (DSX-CHA004)

S/N: 21450653

Length (m), Limit 100.0	[Pair 7,8]	107.2
Prop. Delay (ns), Limit 555	[Pair 4,5]	533
Delay Skew (ns), Limit 50	[Pair 4,5]	15
Resistance (ohms)	[Pair 4,5]	19.09
Insertion Loss Margin (dB)	[Pair 4,5]	1.6
Frequency (MHz)	[Pair 4,5]	100.0
Limit (dB)	[Pair 4,5]	24.0



Worst Case Margin Worst Case Value

PASS	MAIN	SR	MAIN	SR
Worst Pair	1,2-7,8	1,2-3,6	1,2-3,6	1,2-7,8
<b>NEXT (dB)</b>	6.4	6.6	7.4	9.2
Freq. (MHz)	19.5	13.6	61.0	86.0
Limit (dB)	42.2	44.8	33.8	31.2
Worst Pair	3,6	3,6	3,6	1,2
<b>PS NEXT (dB)</b>	8.3	7.4	8.3	9.2
Freq. (MHz)	61.0	13.6	61.0	86.0
Limit (dB)	30.8	41.8	30.8	28.2

PASS	MAIN	SR	MAIN	SR
Worst Pair	3,6-4,5	3,6-4,5	3,6-4,5	3,6-4,5
<b>ACR-F (dB)</b>	3.2	3.4	5.0	7.4
Freq. (MHz)	24.4	24.4	73.3	98.8
Limit (dB)	29.7	29.7	20.1	17.5
Worst Pair	4,5	3,6	3,6	4,5
<b>PS ACR-F (dB)</b>	6.1	6.0	9.9	9.4
Freq. (MHz)	24.4	16.5	98.8	98.8
Limit (dB)	26.7	30.1	14.5	14.5

N/A	MAIN	SR	MAIN	SR
Worst Pair	1,2-7,8	1,2-3,6	1,2-3,6	1,2-3,6
<b>ACR-N (dB)</b>	7.5	7.4	13.5	12.3
Freq. (MHz)	19.5	13.6	89.8	94.0
Limit (dB)	32.1	36.4	8.3	7.3
Worst Pair	4,5	3,6	3,6	3,6
<b>PS ACR-N (dB)</b>	9.2	8.2	14.8	13.1
Freq. (MHz)	2.6	13.6	91.8	94.0
Limit (dB)	49.9	33.4	4.8	4.3

PASS	MAIN	SR	MAIN	SR
Worst Pair	1,2	1,2	1,2	1,2
<b>RL (dB)</b>	6.2	6.8	8.8	10.5
Freq. (MHz)	2.4	2.4	98.3	95.5
Limit (dB)	17.0	17.0	10.1	10.2

Compliant Network Standards:  
 10BASE-T      100BASE-TX      100BASE-T4  
 1000BASE-T    2.5GBASE-T      ATM-25  
 ATM-51        ATM-155          100VG-AnyLan  
 TR-4          TR-16 Active     TR-16 Passive



**Cable ID: CAT6 ISO**

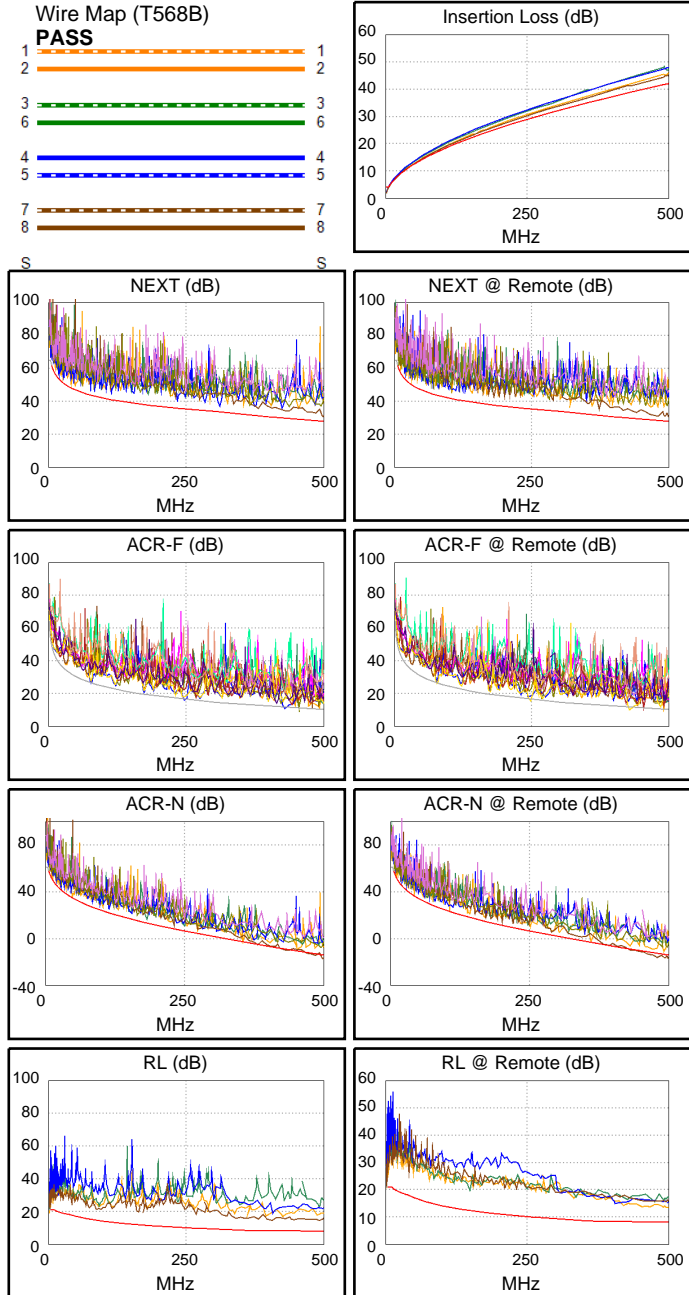
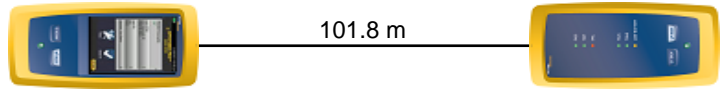
**Test Limit: ISO11801 PL3 Class Ea**  
Limits Version: V7.7  
Date / Time: 2023-01-17 16:43:03  
Operator: JEDLICSKA IMRE  
**Headroom 1.7 dB (NEXT 1,2-3,6)**  
Cable Type: Cat 6 U/UTP  
NVP: 69.0%

Main: Versiv  
S/N: 19520277  
Software Version: V6.8 Build 6  
Calibration Date: 2022-06-21  
Adapter: DSX-602 (DSX-PLA004)  
S/N: 21122441

**Test Summary: FAIL**

Remote: Versiv  
S/N: 20020484  
Software Version: V6.8 Build 6  
Calibration Date: 2022-06-21  
Adapter: DSX-602R (DSX-PLA004)  
S/N: 21122445

Length (m), Limit 90.0	[Pair 7,8]	101.8
Prop. Delay (ns), Limit 498	[Pair 4,5]	<b>513 F</b>
Delay Skew (ns), Limit 44	[Pair 4,5]	21
Resistance (ohms), Limit 21.00	[Pair 3,6]	15.12
Insertion Loss Margin (dB)	[Pair 3,6]	<b>-6.7 F</b>
Frequency (MHz)	[Pair 3,6]	492.0
Limit (dB)	[Pair 3,6]	41.7



	Worst Case Margin		Worst Case Value	
<b>PASS</b>	MAIN	SR	MAIN	SR
Worst Pair	1,2-3,6	3,6-4,5	3,6-4,5	3,6-4,5
<b>NEXT (dB)</b>	1.7	2.0	2.9	2.0
Freq. (MHz)	47.8	480.0	498.0	480.0
Limit (dB)	47.0	28.4	27.9	28.4
Worst Pair	1,2	3,6	3,6	3,6
<b>PS NEXT (dB)</b>	2.8	3.4	5.0	3.7
Freq. (MHz)	41.0	11.1	498.0	479.0
Limit (dB)	45.6	54.8	24.9	25.4
<b>FAIL</b>	MAIN	SR	MAIN	SR
Worst Pair	1,2-7,8	7,8-1,2	1,2-7,8	7,8-1,2
<b>ACR-F (dB)</b>	<b>-1.7 F</b>	<b>-2.0 F</b>	-1.7	-2.0
Freq. (MHz)	431.0	431.0	431.0	431.0
Limit (dB)	11.5	11.5	11.5	11.5
Worst Pair	7,8	3,6	3,6	3,6
<b>PS ACR-F (dB)</b>	1.1*	0.2*	1.5	0.2
Freq. (MHz)	431.0	490.0	477.0	490.0
Limit (dB)	8.5	7.4	7.6	7.4
<b>FAIL</b>	MAIN	SR	MAIN	SR
Worst Pair	3,6-4,5	3,6-4,5	3,6-4,5	3,6-4,5
<b>ACR-N (dB)</b>	<b>-3.2 F</b>	<b>-3.7 F</b>	-3.2	-3.0
Freq. (MHz)	498.0	480.0	498.0	500.0
Limit (dB)	-14.0	-12.8	-14.0	-14.2
Worst Pair	3,6	3,6	3,6	3,6
<b>PS ACR-N (dB)</b>	<b>-1.8 F</b>	<b>-2.3 F</b>	-0.2	-1.5
Freq. (MHz)	473.0	467.0	500.0	492.0
Limit (dB)	-15.3	-14.8	-17.2	-16.7
<b>PASS</b>	MAIN	SR	MAIN	SR
Worst Pair	1,2	1,2	7,8	1,2
<b>RL (dB)</b>	3.8	4.9	6.2	5.0
Freq. (MHz)	3.3	3.3	409.0	489.0
Limit (dB)	21.0	21.0	8.0	8.0

\* Measurement is within the accuracy limits of the instrument.



**Cable ID: CAT6 ISO(RC)**

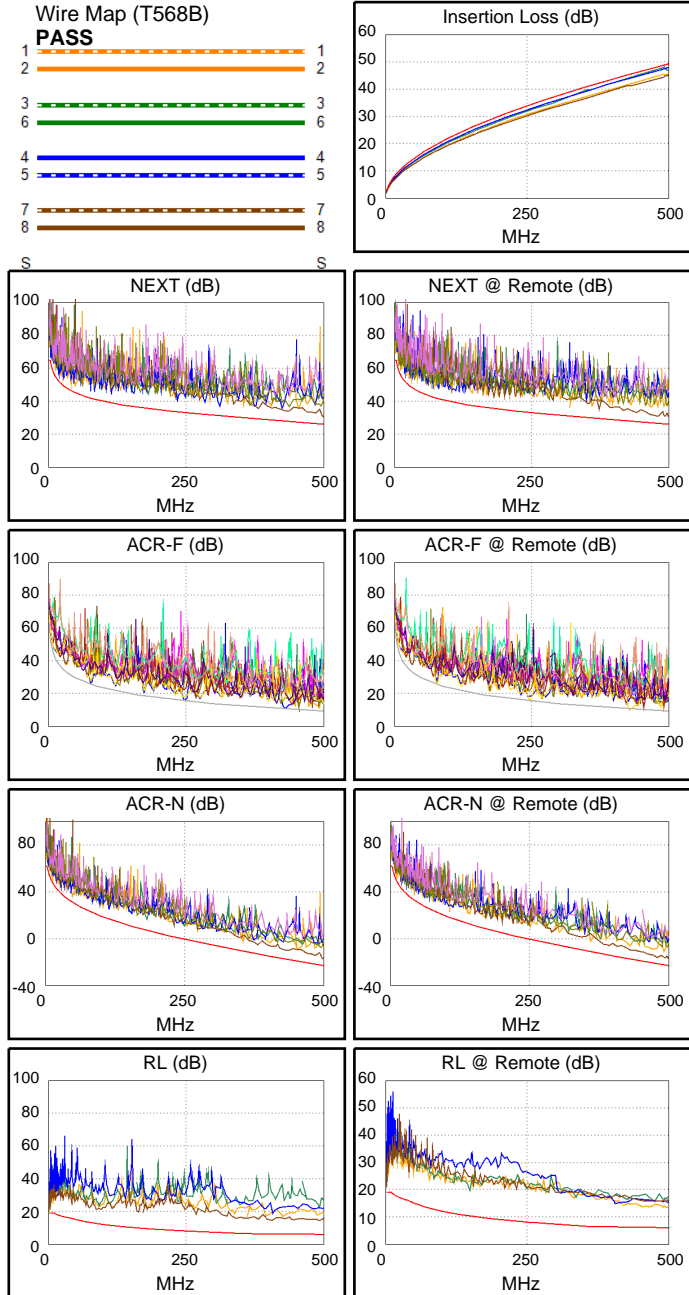
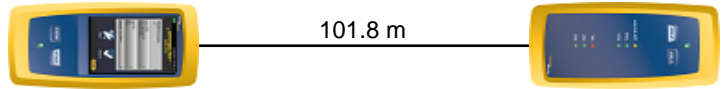
Test Limit: TIA 1005 Cat 6A Channel  
Limits Version: V7.5  
Date / Time: 2023-01-17 17:44:31  
Operator: JEDLICSKA IMRE  
Headroom 3.4 dB (NEXT 1,2-3,6)  
Cable Type: Cat 6 U/UTP  
NVP: 69.0%

Main: Versiv  
S/N: 19520277  
Software Version: V6.8 Build 6  
Calibration Date: 2022-06-21  
Adapter: DSX-602 (DSX-PLA004)  
S/N: 21122441

**Test Summary: FAIL**

Remote: Versiv  
S/N: 20020484  
Software Version: V6.8 Build 6  
Calibration Date: 2022-06-21  
Adapter: DSX-602R (DSX-PLA004)  
S/N: 21122445

Length (m), Limit 100.0	[Pair 7,8]	101.8
Prop. Delay (ns), Limit 555	[Pair 4,5]	513
Delay Skew (ns), Limit 50	[Pair 4,5]	21
Resistance (ohms)	[Pair 3,6]	15.12
Insertion Loss Margin (dB)	[Pair 3,6]	0.5*
Frequency (MHz)	[Pair 3,6]	492.0
Limit (dB)	[Pair 3,6]	48.9



	Worst Case Margin		Worst Case Value	
<b>PASS</b>	MAIN	SR	MAIN	SR
Worst Pair	1,2-3,6	3,6-4,5	3,6-4,5	3,6-4,5
<b>NEXT (dB)</b>	3.4	3.8	4.7	3.8
Freq. (MHz)	47.8	480.0	498.0	480.0
Limit (dB)	45.3	26.6	26.1	26.6
Worst Pair	1,2	3,6	3,6	3,6
<b>PS NEXT (dB)</b>	4.7	4.9	6.6	5.4
Freq. (MHz)	41.0	11.0	498.0	479.0
Limit (dB)	43.7	53.3	23.3	23.7
<b>FAIL</b>	MAIN	SR	MAIN	SR
Worst Pair	1,2-7,8	7,8-1,2	1,2-7,8	7,8-1,2
<b>ACR-F (dB)</b>	-0.8 F	-1.1 F	-0.8	-1.1
Freq. (MHz)	431.0	431.0	431.0	431.0
Limit (dB)	10.6	10.6	10.6	10.6
Worst Pair	7,8	3,6	3,6	3,6
<b>PS ACR-F (dB)</b>	2.0*	1.1*	2.4	1.1
Freq. (MHz)	431.0	490.0	477.0	490.0
Limit (dB)	7.6	6.5	6.7	6.5
<b>N/A</b>	MAIN	SR	MAIN	SR
Worst Pair	1,2-3,6	1,2-3,6	3,6-4,5	3,6-4,5
<b>ACR-N (dB)</b>	4.6	4.9	5.9	6.0
Freq. (MHz)	47.8	12.5	498.0	500.0
Limit (dB)	31.1	47.8	-23.1	-23.2
Worst Pair	1,2	3,6	3,6	3,6
<b>PS ACR-N (dB)</b>	6.3	5.7	8.7	7.3
Freq. (MHz)	22.0	11.0	500.0	492.0
Limit (dB)	38.7	46.5	-26.1	-25.5
<b>PASS</b>	MAIN	SR	MAIN	SR
Worst Pair	1,2	1,2	7,8	1,2
<b>RL (dB)</b>	5.8	6.9	8.2	7.0
Freq. (MHz)	3.3	3.3	409.0	489.0
Limit (dB)	19.0	19.0	6.0	6.0

\* Measurement is within the accuracy limits of the instrument.





### Cable ID: CAT6 ISO(RC)

Test Limit: TIA Cat 6 Channel

Limits Version: V7.5

Date / Time: 2023-01-17 17:48:32

Operator: JEDLICSKA IMRE

Headroom 3.4 dB (NEXT 1,2-3,6)

Cable Type: Cat 6 U/UTP

NVP: 69.0%

Main: Versiv

S/N: 19520277

Software Version: V6.8 Build 6

Calibration Date: 2022-06-21

Adapter: DSX-602 (DSX-PLA004)

S/N: 21122441

### Test Summary: PASS

Remote: Versiv

S/N: 20020484

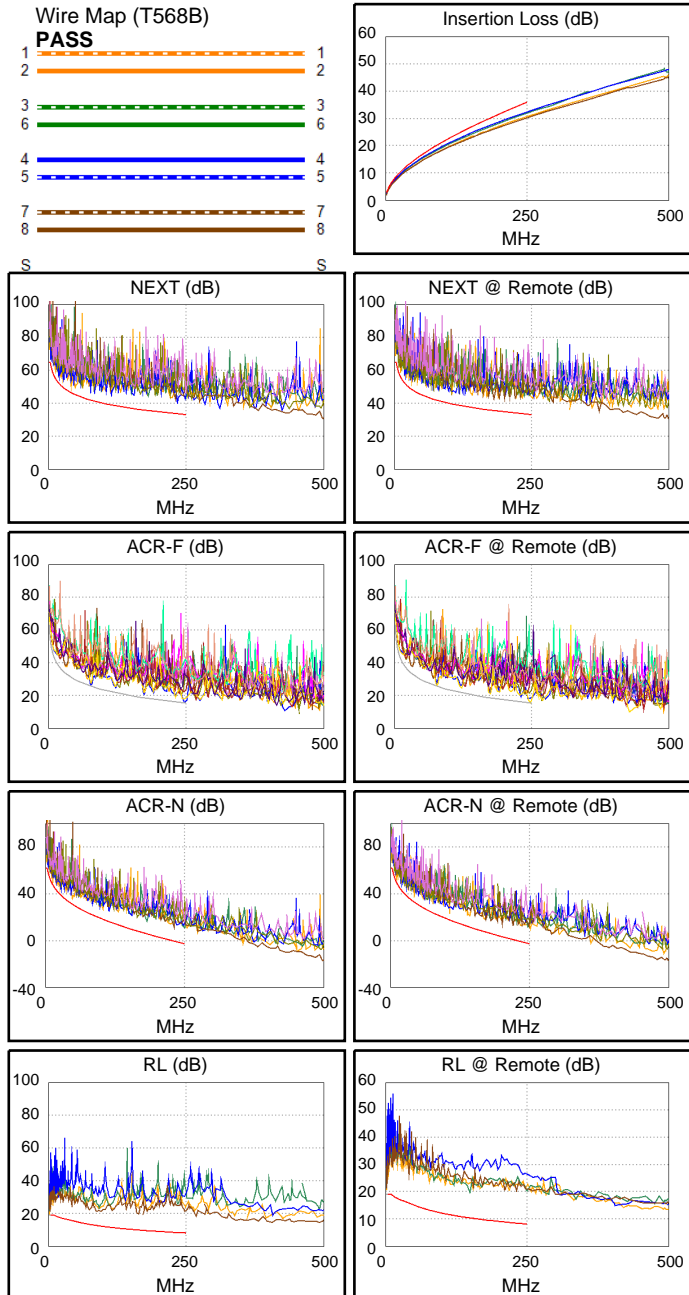
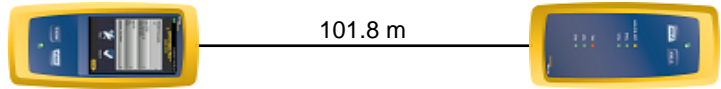
Software Version: V6.8 Build 6

Calibration Date: 2022-06-21

Adapter: DSX-602R (DSX-PLA004)

S/N: 21122445

Length (m), Limit 100.0	[Pair 7,8]	101.8
Prop. Delay (ns), Limit 555	[Pair 4,5]	513
Delay Skew (ns), Limit 50	[Pair 4,5]	21
Resistance (ohms)	[Pair 3,6]	15.12
Insertion Loss Margin (dB)	[Pair 4,5]	3.5
Frequency (MHz)	[Pair 4,5]	250.0
Limit (dB)	[Pair 4,5]	35.9



Worst Case Margin Worst Case Value

PASS	MAIN	SR	MAIN	SR
Worst Pair	1,2-3,6	1,2-3,6	1,2-7,8	3,6-4,5
<b>NEXT (dB)</b>	3.4	4.1	6.9	7.3
Freq. (MHz)	47.8	12.5	234.0	181.0
Limit (dB)	45.3	55.0	33.6	35.5
Worst Pair	1,2	3,6	1,2	3,6
<b>PS NEXT (dB)</b>	4.7	4.9	8.9	9.6
Freq. (MHz)	41.0	11.0	234.0	249.5
Limit (dB)	43.7	53.3	30.7	30.2

PASS	MAIN	SR	MAIN	SR
Worst Pair	1,2-7,8	7,8-1,2	1,2-7,8	7,8-1,2
<b>ACR-F (dB)</b>	0.4*	0.0*	0.4	0.0
Freq. (MHz)	248.5	247.5	248.5	247.5
Limit (dB)	15.4	15.4	15.4	15.4
Worst Pair	7,8	1,2	7,8	1,2
<b>PS ACR-F (dB)</b>	3.3	2.7	3.3	2.7
Freq. (MHz)	248.5	247.0	248.5	247.0
Limit (dB)	12.4	12.4	12.4	12.4

N/A	MAIN	SR	MAIN	SR
Worst Pair	1,2-3,6	1,2-3,6	1,2-4,5	3,6-4,5
<b>ACR-N (dB)</b>	4.6	4.7	13.5	13.5
Freq. (MHz)	47.8	11.0	250.0	249.5
Limit (dB)	31.1	49.3	-2.8	-2.8
Worst Pair	1,2	3,6	4,5	3,6
<b>PS ACR-N (dB)</b>	6.1	5.5	14.7	13.4
Freq. (MHz)	21.9	11.0	250.0	249.5
Limit (dB)	38.9	46.7	-5.8	-5.7

PASS	MAIN	SR	MAIN	SR
Worst Pair	1,2	1,2	7,8	3,6
<b>RL (dB)</b>	5.8	6.9	9.8	9.3
Freq. (MHz)	3.3	3.3	163.5	148.5
Limit (dB)	19.0	19.0	9.9	10.3

Compliant Network Standards:  
 10BASE-T 100BASE-TX 100BASE-T4  
 1000BASE-T 2.5GBASE-T 5GBASE-T  
 ATM-25 ATM-51 ATM-155  
 100VG-AnyLan TR-4 TR-16 Active  
 TR-16 Passive

\* Measurement is within the accuracy limits of the instrument.



### Cable ID: CAT6 TIA

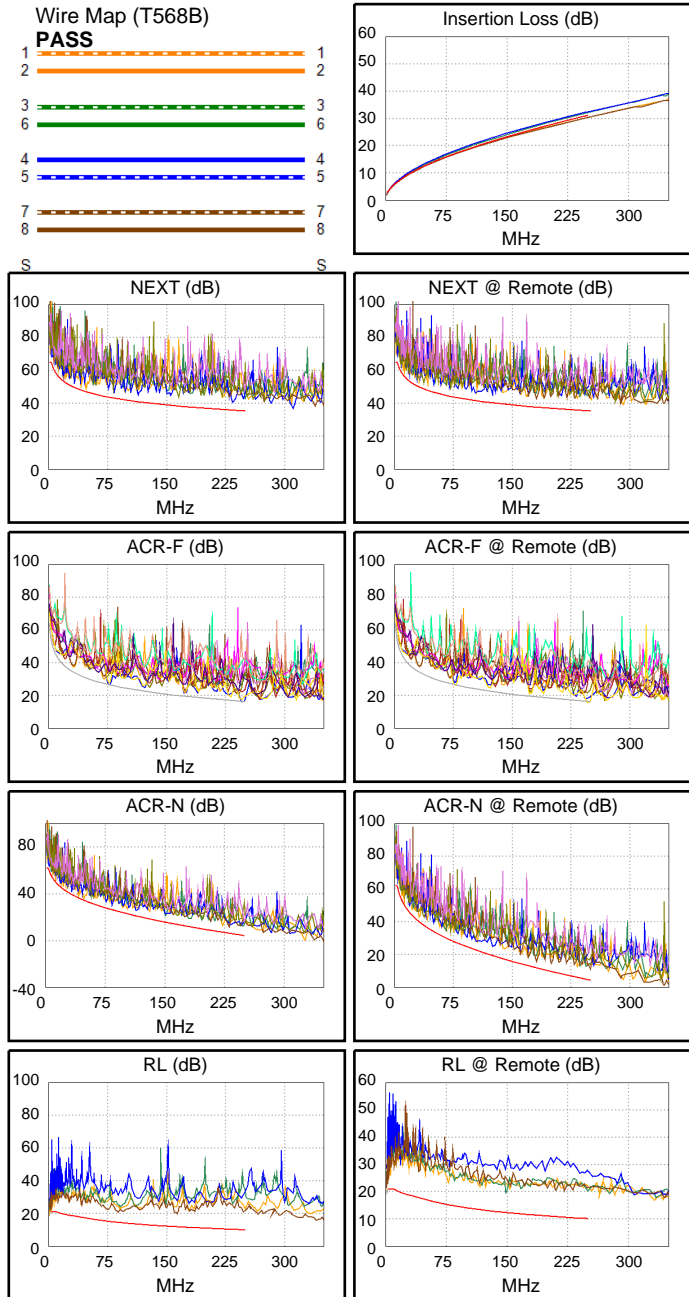
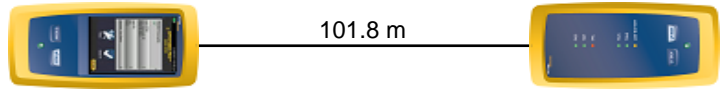
Test Limit: TIA Cat 6 Perm. Link  
Limits Version: V7.7  
Date / Time: 2023-01-17 16:41:16  
Operator: JEDLICSKA IMRE  
Headroom 1.8 dB (NEXT 1,2-3,6)  
Cable Type: Cat 6 U/UTP  
NVP: 69.0%

Main: Versiv  
S/N: 19520277  
Software Version: V6.8 Build 6  
Calibration Date: 2022-06-21  
Adapter: DSX-602 (DSX-PLA004)  
S/N: 21122441

### Test Summary: FAIL

Remote: Versiv  
S/N: 20020484  
Software Version: V6.8 Build 6  
Calibration Date: 2022-06-21  
Adapter: DSX-602R (DSX-PLA004)  
S/N: 21122445

Length (m), Limit 90.0	[Pair 7,8]	101.8F
Prop. Delay (ns), Limit 498	[Pair 4,5]	513F
Delay Skew (ns), Limit 44	[Pair 4,5]	21
Resistance (ohms)	[Pair 3,6]	15.19
Insertion Loss Margin (dB)	[Pair 4,5]	-1.5F
Frequency (MHz)	[Pair 4,5]	202.5
Limit (dB)	[Pair 4,5]	27.5



	Worst Case Margin		Worst Case Value	
<b>PASS</b>	MAIN	SR	MAIN	SR
Worst Pair	1,2-3,6	1,2-3,6	1,2-7,8	3,6-4,5
<b>NEXT (dB)</b>	1.8	2.8	4.7	5.2
Freq. (MHz)	47.8	12.5	234.0	181.0
Limit (dB)	47.0	56.3	35.8	37.6
Worst Pair	1,2	7,8	1,2	3,6
<b>PS NEXT (dB)</b>	2.8	3.3	6.4	7.1
Freq. (MHz)	40.8	28.6	234.0	250.0
Limit (dB)	45.7	48.2	33.2	32.7
<b>FAIL</b>	MAIN	SR	MAIN	SR
Worst Pair	1,2-7,8	7,8-1,2	1,2-7,8	7,8-1,2
<b>ACR-F (dB)</b>	-0.6F	-1.0F	-0.5	-0.9
Freq. (MHz)	246.5	246.5	248.0	247.5
Limit (dB)	16.4	16.4	16.3	16.3
Worst Pair	7,8	1,2	7,8	1,2
<b>PS ACR-F (dB)</b>	2.4	1.7	2.4	1.8
Freq. (MHz)	248.0	246.5	248.0	247.0
Limit (dB)	13.3	13.4	13.3	13.3
<b>N/A</b>	MAIN	SR	MAIN	SR
Worst Pair	1,2-3,6	1,2-3,6	1,2-4,5	3,6-4,5
<b>ACR-N (dB)</b>	1.2	2.6	6.5	6.4
Freq. (MHz)	47.8	12.5	250.0	249.5
Limit (dB)	34.6	50.1	4.2	4.3
Worst Pair	1,2	3,6	4,5	3,6
<b>PS ACR-N (dB)</b>	2.9	3.2	7.3	6.1
Freq. (MHz)	41.0	31.3	250.0	250.0
Limit (dB)	34.1	37.6	1.6	1.6
<b>PASS</b>	MAIN	SR	MAIN	SR
Worst Pair	1,2	1,2	7,8	3,6
<b>RL (dB)</b>	4.0	5.1	7.8	7.2
Freq. (MHz)	3.3	3.4	163.5	148.5
Limit (dB)	21.0	21.0	11.9	12.3





### Cable ID: CAT6 TIA(RC)

Test Limit: TIA Cat 6 Channel

Limits Version: V7.5

Date / Time: 2023-01-17 17:48:32

Operator: JEDLICSKA IMRE

Headroom 3.5 dB (NEXT 1,2-3,6)

Cable Type: Cat 6 U/UTP

NVP: 69.0%

Main: Versiv

S/N: 19520277

Software Version: V6.8 Build 6

Calibration Date: 2022-06-21

Adapter: DSX-602 (DSX-PLA004)

S/N: 21122441

### Test Summary: PASS

Remote: Versiv

S/N: 20020484

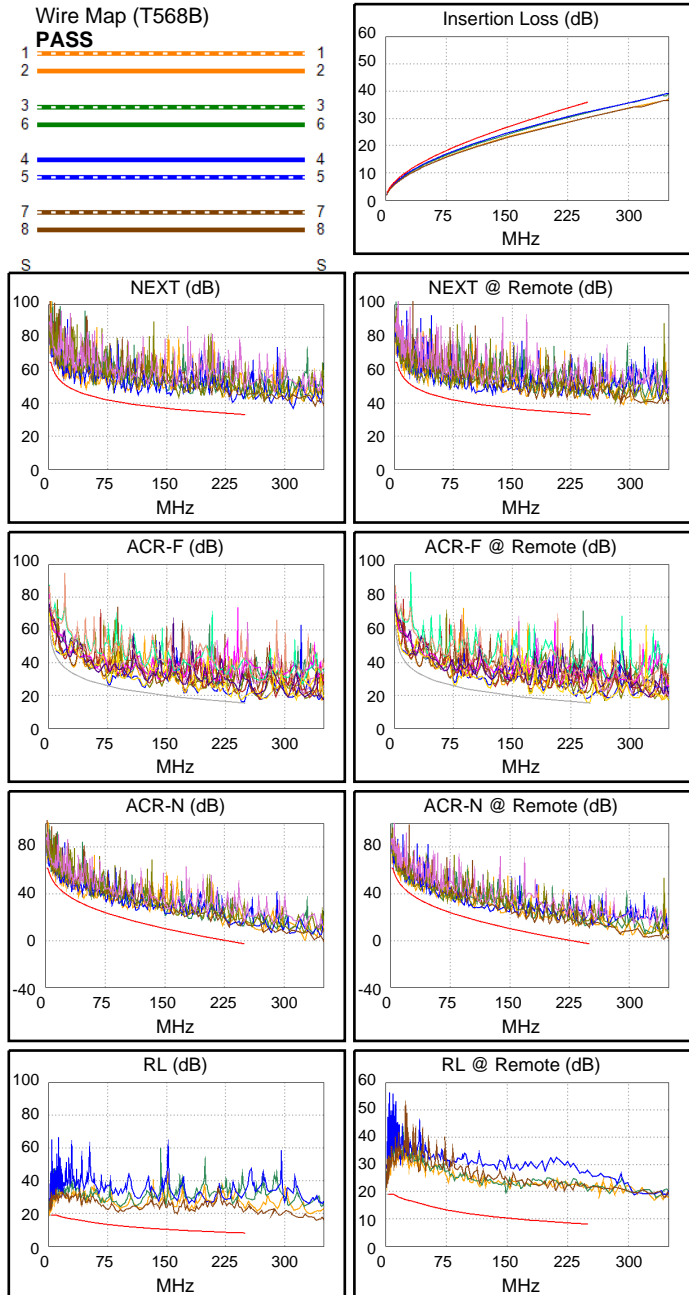
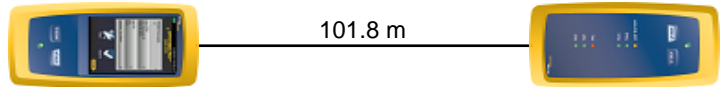
Software Version: V6.8 Build 6

Calibration Date: 2022-06-21

Adapter: DSX-602R (DSX-PLA004)

S/N: 21122445

Length (m), Limit 100.0	[Pair 7,8]	101.8
Prop. Delay (ns), Limit 555	[Pair 4,5]	513
Delay Skew (ns), Limit 50	[Pair 4,5]	21
Resistance (ohms)	[Pair 3,6]	15.19
Insertion Loss Margin (dB)	[Pair 4,5]	3.5
Frequency (MHz)	[Pair 4,5]	250.0
Limit (dB)	[Pair 4,5]	35.9



Worst Case Margin Worst Case Value

PASS	MAIN	SR	MAIN	SR
Worst Pair	1,2-3,6	1,2-3,6	1,2-7,8	3,6-4,5
<b>NEXT (dB)</b>	3.5	4.1	6.9	7.3
Freq. (MHz)	47.8	12.5	234.0	181.0
Limit (dB)	45.3	55.0	33.6	35.5
Worst Pair	1,2	3,6	1,2	3,6
<b>PS NEXT (dB)</b>	4.7	4.9	8.9	9.6
Freq. (MHz)	40.8	11.0	234.0	250.0
Limit (dB)	43.8	53.3	30.7	30.2

PASS	MAIN	SR	MAIN	SR
Worst Pair	1,2-7,8	7,8-1,2	1,2-7,8	7,8-1,2
<b>ACR-F (dB)</b>	0.4*	0.0*	0.4	0.0
Freq. (MHz)	248.0	247.5	248.0	247.5
Limit (dB)	15.4	15.4	15.4	15.4
Worst Pair	7,8	1,2	7,8	1,2
<b>PS ACR-F (dB)</b>	3.3	2.7	3.3	2.7
Freq. (MHz)	248.0	247.0	248.0	247.0
Limit (dB)	12.4	12.4	12.4	12.4

N/A	MAIN	SR	MAIN	SR
Worst Pair	1,2-3,6	1,2-3,6	1,2-4,5	3,6-4,5
<b>ACR-N (dB)</b>	4.6	4.8	13.5	13.5
Freq. (MHz)	22.0	12.5	250.0	249.5
Limit (dB)	41.5	47.9	-2.8	-2.8
Worst Pair	1,2	3,6	4,5	3,6
<b>PS ACR-N (dB)</b>	5.9	5.5	14.7	13.5
Freq. (MHz)	22.0	11.0	250.0	250.0
Limit (dB)	38.8	46.7	-5.8	-5.8

PASS	MAIN	SR	MAIN	SR
Worst Pair	1,2	1,2	7,8	3,6
<b>RL (dB)</b>	6.0	7.1	9.8	9.2
Freq. (MHz)	3.3	3.4	163.5	148.5
Limit (dB)	19.0	19.0	9.9	10.3

Compliant Network Standards:  
 10BASE-T 100BASE-TX 100BASE-T4  
 1000BASE-T 2.5GBASE-T 5GBASE-T  
 ATM-25 ATM-51 ATM-155  
 100VG-AnyLan TR-4 TR-16 Active  
 TR-16 Passive

\* Measurement is within the accuracy limits of the instrument.