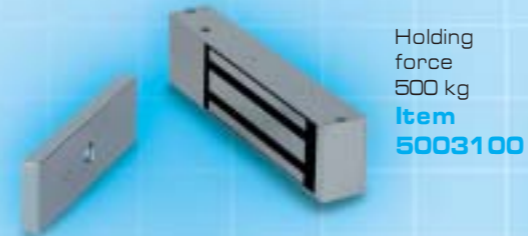


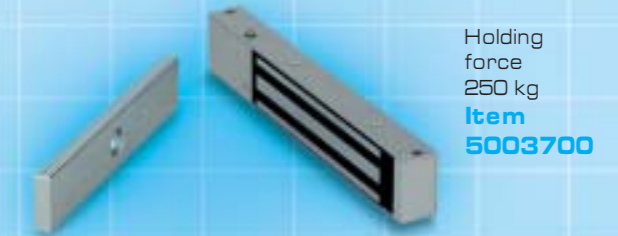
CONTROL SYSTEMS FOR EMERGENCY EXITS



A Electromagnets



Holding force 500 kg
Item 5003100



Holding force 250 kg
Item 5003700

L-shaped supporting bracket
for doors opening outwards
Item 0453000
(for 5003100)

L-shaped supporting bracket
for doors opening outwards
Item 0453700
(for 5003700)

Cover
for electromagnet and L-shaped supporting bracket
Item 0553100

B Panic exit device
arranged for 3 locking points provided with internal microswitches
Push Series Item 445
Star Series Item 464
(+ horizontal bar to be ordered separately),
Ministar Series Item 419
(+ horizontal bar to be ordered separately)

C Control logic unit
allows to operate up to 4 doors, equipped with back-up battery
Item 0450052



D Concealed fairlead
(for routing cables between door leaf and door frame)
Item 0450087

E Door closer arm
(with or without hold-open)
Item 10710 12/13

F Multi-size overhead door closer
Item 11710 11

G Cylinder and lever handle kit
Item 0446400 (for Push/Star series)
Item 0441905 (for Ministar series)

NOTE: Additional multiple solutions are available for emergency exits, including a wide range of systems and accessories.

ACCESSORIES

Keypad for internal doors
Item 0456111



Swipe card reader for internal doors
(to be connected with the electronic control unit 0456171)
Item 0456169



Keypad for external doors
Item 0456121



Swipe card reader for external doors
(to be connected with the electronic control unit 0456171)
Item 0456170



IMPORTANT - The following systems are also available: entry phone systems, radio remote controls, control panels, lamp indicators.
For any further information concerning our products: infocorni@yale.it