

CILINDRI ASTRAL



ASTRAL

CARATTERISTICHE PRINCIPALI

SICUREZZA ATTIVA

- **Numero di cifrature:** oltre 1.600.000 di combinazioni possibili.

SICUREZZA PASSIVA

- **Resistenza alla spinta:** camma sporgente
- **Resistenza al trapano:**
 - una spina in acciaio temperato inserita su entrambi i lati del corpo del cilindro
 - primo perno e controperno in acciaio cementato.
- **Resistenza al grimaldello:** speciale sagoma dei controperni.

POTENZIALITA' GESTIONE ACCESSI

- 63.000 cilindri diversi x una chiave MK (inclusi perni passivi)
- Altre configurazioni disponibili su richiesta.

AFFIDABILITA'

- 100.000 cicli

NORMATIVE

- Conforme alla norma EN1303:
 - Durata: grado 6
 - Sicurezza: grado 3

CERTIFICAZIONI

- Certificato SKG ** (Versione Speciale)



Caratteristiche tecniche:

CILINDRO:

- Sistema di cifratura a 10 perni (6 attivi, 4 passivi)
- Corpo in ottone con pacco lamellare su tutta la lunghezza del cilindro.
- Cilindretti in ottone
- Camma frizionata in acciaio sinterizzato autolubrificante DIN.
- Perni:
 - in bronzo antiusura
 - in acciaio cementato in prima posizione.
- Controperni:
 - in ottone
 - in acciaio cementato in prima posizione.
- Molle in bronzo fosforoso

CHIAVE:

- piaatta ad introduzione reversibile
- in ottone nichelata
- numerazione a codice sulla testa
- spessore chiave 2,9 mm
- salto 0,48 mm

Finiture:

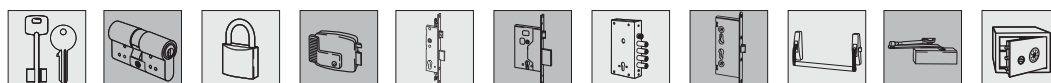
- Standard: ottone smerigliato (fin. 00)
- A richiesta: ottone nichelato (fin. 12), ottone lucido (fin. 66)

Opzioni a richiesta:

- KA, MK, GMK, GGMK, CE, CA, C5, CL, CP, PP (CL e CP chiavi collo lungo compatibili con borchie di protezione, CP con testa in plastica, PP profilo chiave personalizzabile)

Dotazione standard:

- vite di fissaggio
- 3 chiavi art. 1.00620.01.0
- CODE CARD: consente di ottenere copie di chiavi conformi all'originale inserendo il codice indiretto riportato sulla card in macchina a duplicazione elettronica.

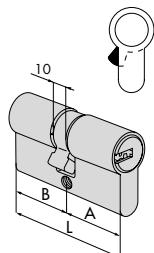


AS01
01-04

CILINDRI ASTRAL A PROFILO EUROPEO

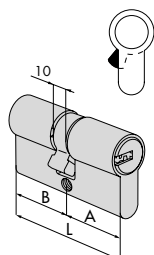


Tipologia	Descrizione	Dim. comm.				Chiave articolo	Kg	Pezzi	ARTICOLO			
		L	A	B	Perni				Unitario	Pezzi	Tipo	Dim.



• Doppio cilindro

28 / 28	55,4	27,7	27,7	10	1 00620 01 0	0,232	12	1	0A310 05 0
30 / 30	59,0	29,5	29,5	10	1 00620 01 0	0,235	12	1	0A310 07 0
28 / 32	59,2	27,7	31,5	10	1 00620 01 0	0,230	12	1	0A310 08 0
28 / 34	61,2	27,7	33,5	10	1 00620 01 0	0,234	12	1	0A310 06 0
28 / 36	63,2	27,7	35,5	10	1 00620 01 0	0,240	12	1	0A310 09 0
30 / 35	64,0	29,5	34,5	10	1 00620 01 0	0,243	12	1	0A310 26 0
33 / 33	65,0	32,5	32,5	10	1 00620 01 0	0,258	12	1	0A310 10 0
35 / 35	69,0	34,5	34,5	10	1 00620 01 0	0,272	12	1	0A310 13 0
40 / 30	69,0	39,5	29,5	10	1 00620 01 0	0,272	12	1	0A310 12 0
28 / 43	70,2	27,7	42,5	10	1 00620 01 0	0,262	12	1	0A310 11 0
30 / 45	74,0	29,5	44,5	10	1 00620 01 0	0,274	12	1	0A310 27 0
35 / 40	74,0	34,5	39,5	10	1 00620 01 0	0,274	12	1	0A310 28 0
30 / 50	79,0	29,5	49,5	10	1 00620 01 0	0,301	12	1	0A310 17 0
35 / 45	79,0	34,5	44,5	10	1 00620 01 0	0,289	12	1	0A310 19 0
40 / 40	79,0	39,5	39,5	10	1 00620 01 0	0,289	12	1	0A310 18 0
30 / 55	84,0	29,5	54,5	10	1 00620 01 0	0,304	12	1	0A310 33 0
35 / 50	84,0	34,5	49,5	10	1 00620 01 0	0,360	12	1	0A310 31 0
40 / 45	84,0	39,5	44,5	10	1 00620 01 0	0,304	12	1	0A310 30 0
43 / 43	85,0	42,5	42,5	10	1 00620 01 0	0,308	12	1	0A310 46 0
30 / 60	89,0	29,5	59,5	10	1 00620 01 0	0,320	12	1	0A310 20 0
35 / 55	89,0	34,5	54,5	10	1 00620 01 0	0,332	12	1	0A310 32 0
40 / 50	89,0	39,5	49,5	10	1 00620 01 0	0,320	12	1	0A310 21 0
45 / 45	89,0	44,5	44,5	10	1 00620 01 0	0,333	12	1	0A310 29 0
30 / 65	94,0	29,5	64,5	10	1 00620 01 0	0,334	6	1	0A310 41 0
35 / 60	94,0	34,5	59,5	10	1 00620 01 0	0,390	6	1	0A310 38 0
40 / 55	94,0	39,5	54,5	10	1 00620 01 0	0,355	6	1	0A310 42 0
45 / 50	94,0	44,5	49,5	10	1 00620 01 0	0,334	6	1	0A310 39 0
30 / 70	99,0	29,5	69,5	10	1 00620 01 0	0,349	6	1	0A310 24 0
35 / 65	99,0	34,5	64,5	10	1 00620 01 0	0,349	6	1	0A310 22 0
40 / 60	99,0	39,5	59,5	10	1 00620 01 0	0,349	6	1	0A310 25 0
45 / 55	99,0	44,5	54,5	10	1 00620 01 0	0,349	6	1	0A310 43 0
50 / 50	99,0	49,5	49,5	10	1 00620 01 0	0,349	6	1	0A310 23 0
30 / 80	109,0	29,5	79,5	10	1 00620 01 0	0,378	6	1	0A310 37 0
40 / 70	109,0	39,5	69,5	10	1 00620 01 0	0,400	6	1	0A310 35 0
50 / 60	109,0	49,5	59,5	10	1 00620 01 0	0,402	6	1	0A310 36 0
55 / 55	109,0	54,5	54,5	10	1 00620 01 0	0,378	6	1	0A310 70 0
55 / 60	114,0	54,5	59,5	10	1 00620 01 0	0,420	6	1	0A310 71 0
60 / 60	119,0	59,5	59,5	10	1 00620 01 0	0,410	6	1	0A310 40 0



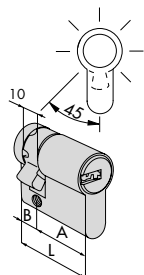
• Doppio cilindro frizionato

30 / 30	59,0	29,5	29,5	10	1 00620 01 0	0,228	12	1	0A311 07 0
28 / 34	61,2	27,7	33,5	10	1 00620 01 0	0,235	12	1	0A311 06 0
28 / 36	63,2	27,7	35,5	10	1 00620 01 0	0,241	12	1	0A311 09 0
33 / 33	65,0	32,5	32,5	10	1 00620 01 0	0,245	12	1	0A311 10 0
35 / 35	69,0	34,5	34,5	10	1 00620 01 0	0,258	12	1	0A311 13 0
40 / 30	69,0	39,5	29,5	10	1 00620 01 0	0,258	12	1	0A311 12 0
28 / 43	70,2	27,7	42,5	10	1 00620 01 0	0,262	12	1	0A311 11 0
35 / 40	74,0	34,5	39,5	10	1 00620 01 0	0,262	12	1	0A311 28 0
30 / 50	79,0	29,5	49,5	10	1 00620 01 0	0,289	12	1	0A311 17 0
35 / 45	79,0	34,5	44,5	10	1 00620 01 0	0,289	12	1	0A311 19 0
40 / 40	79,0	39,5	39,5	10	1 00620 01 0	0,289	12	1	0A311 18 0
35 / 50	84,0	34,5	49,5	10	1 00620 01 0	0,315	12	1	0A311 31 0
40 / 45	84,0	39,5	44,5	10	1 00620 01 0	0,319	12	1	0A311 30 0
45 / 45	89,0	44,5	44,5	10	1 00620 01 0	0,319	12	1	0A311 29 0
40 / 50	89,0	39,5	49,5	10	1 00620 01 0	0,320	12	1	0A311 21 0
55 / 55	109,0	54,5	54,5	10	1 00620 01 0	0,378	12	1	0A311 70 0

CILINDRI ASTRAL A PROFILO EUROPEO

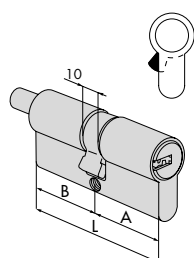


Tipologia	Descrizione	Dim. comm.	Chiave articolo				Kg	Unitario	Pezzi	ARTICOLO			
			L	A	B	Perni				Tipo	Dim. Mano	Fin.	Pers.



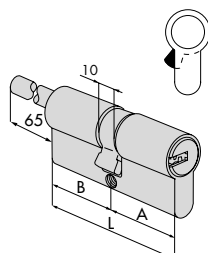
- Mezzo cilindro con camma regolabile in 8 posizioni

30 / 10	39,5	29,5	10,0	10	1 00620 01 0	0,186	12	1	0A314 02 0
35 / 10	44,5	34,5	10,0	10	1 00620 01 0	0,201	12	1	0A314 07 0
37 / 10	46,5	36,5	10,0	10	1 00620 01 0	0,190	12	1	0A314 10 0
40 / 10	49,5	39,5	10,0	10	1 00620 01 0	0,199	12	1	0A314 03 0
43 / 10	52,5	42,5	10,0	10	1 00620 01 0	0,208	12	1	0A314 11 0
45 / 10	54,5	44,5	10,0	10	1 00620 01 0	0,212	12	1	0A314 08 0
50 / 10	59,5	49,5	10,0	10	1 00620 01 0	0,227	12	1	0A314 04 0
60 / 10	69,5	59,5	10,0	10	1 00620 01 0	0,257	12	1	0A314 05 0
65 / 10	74,5	64,5	10,0	10	1 00620 01 0	0,272	12	1	0A314 21 0
70 / 10	79,5	69,5	10,0	10	1 00620 01 0	0,287	12	1	0A314 06 0
80 / 10	89,5	79,5	10,0	10	1 00620 01 0	0,317	12	1	0A314 20 0
95 / 10	103,5	93,5	10,0	10	1 00620 01 0	0,362	6	1	0A314 13 0



- Doppio cilindro predisposto per montaggio pomolo
- A RICHIESTA:
Pomoli
-art. 1.06353.00
-art. 1.06354.00

30 / 30	59,0	29,5	29,5	10	1 00620 01 0	0,244	12	1	0A312 07 0
30 / 35	64,0	29,5	34,5	10	1 00620 01 0	0,264	12	1	0A312 26 0
35 / 30	64,0	34,5	29,5	10	1 00620 01 0	0,259	12	1	0A312 81 0
33 / 33	65,0	32,5	32,5	10	1 00620 01 0	0,267	12	1	0A312 10 0
30 / 40	69,0	29,5	39,5	10	1 00620 01 0	0,279	12	1	0A312 82 0
35 / 35	69,0	34,5	34,5	10	1 00620 01 0	0,279	12	1	0A312 13 0
40 / 30	69,0	39,5	29,5	10	1 00620 01 0	0,279	12	1	0A312 12 0
35 / 40	74,0	34,5	39,5	10	1 00620 01 0	0,294	12	1	0A312 28 0
40 / 35	74,0	39,5	34,5	10	1 00620 01 0	0,294	12	1	0A312 83 0
30 / 50	79,0	29,5	49,5	10	1 00620 01 0	0,318	6	1	0A312 17 0
35 / 45	79,0	34,5	44,5	10	1 00620 01 0	0,309	6	1	0A312 19 0
40 / 40	79,0	39,5	39,5	10	1 00620 01 0	0,309	6	1	0A312 18 0
45 / 35	79,0	44,5	34,5	10	1 00620 01 0	0,309	6	1	0A312 85 0
40 / 45	84,0	39,5	44,5	10	1 00620 01 0	0,324	6	1	0A312 30 0
45 / 40	84,0	44,5	39,5	10	1 00620 01 0	0,324	6	1	0A312 84 0
43 / 43	85,0	42,5	42,5	10	1 00620 01 0	0,326	6	1	0A312 46 0
30 / 60	89,0	29,5	59,5	10	1 00620 01 0	0,353	6	1	0A312 20 0
40 / 50	89,0	39,5	49,5	10	1 00620 01 0	0,350	6	1	0A312 21 0
45 / 45	89,0	44,5	44,5	10	1 00620 01 0	0,347	6	1	0A312 29 0
40 / 55	94,0	39,5	54,5	10	1 00620 01 0	0,355	6	1	0A312 42 0
45 / 50	94,0	44,5	49,5	10	1 00620 01 0	0,367	6	1	0A312 39 0
45 / 55	99,0	44,5	54,5	10	1 00620 01 0	0,370	6	1	0A312 43 0
50 / 50	99,0	49,5	49,5	10	1 00620 01 0	0,370	6	1	0A312 23 0
45 / 60	104,0	44,5	59,5	10	1 00620 01 0	0,398	6	1	0A312 54 0
55 / 50	104,0	54,5	49,5	10	1 00620 01 0	0,384	6	1	0A312 64 0
30 / 80	109,0	29,5	79,5	10	1 00620 01 0	0,400	6	1	0A312 37 0
40 / 70	109,0	39,5	69,5	10	1 00620 01 0	0,400	6	1	0A312 35 0
50 / 60	109,0	49,5	59,5	10	1 00620 01 0	0,400	6	1	0A312 36 0
60 / 50	109,0	59,5	49,5	10	1 00620 01 0	0,410	6	1	0A312 89 0
55 / 60	114,0	54,5	59,5	10	1 00620 01 0	0,415	6	1	0A312 71 0
55 / 65	119,0	54,5	64,5	10	1 00620 01 0	0,430	6	1	0A312 72 0
60 / 60	119,0	59,5	59,5	10	1 00620 01 0	0,430	6	1	0A312 40 0
65 / 55	119,0	64,5	54,5	10	1 00620 01 0	0,430	6	1	0A312 86 0



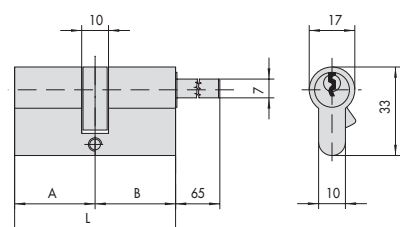
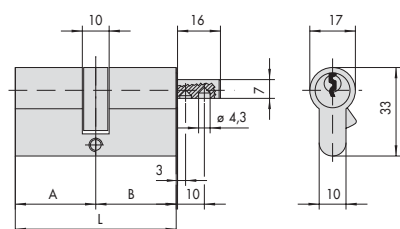
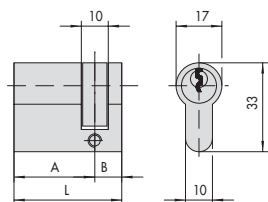
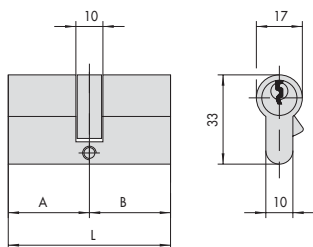
- Doppio cilindro predisposto per montaggio pomolo, con gambo accorciabile
- Da abbinare a borchia interna art. 1.06458.20
- A RICHIESTA:
Pomoli
-art. 1.06353.00
-art. 1.06354.00

30 / 30	59,0	29,5	29,5	10	1 00620 01 0	0,284	6	1	0A317 07 0
40 / 30	69,0	39,5	29,5	10	1 00620 01 0	0,312	6	1	0A317 12 0
50 / 30	79,0	49,5	29,5	10	1 00620 01 0	0,329	6	1	0A317 90 0
60 / 30	89,0	59,5	29,5	10	1 00620 01 0	0,359	6	1	0A317 87 0
70 / 30	99,0	69,5	29,5	10	1 00620 01 0	0,370	6	1	0A317 88 0

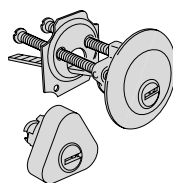
CILINDRI ASTRAL



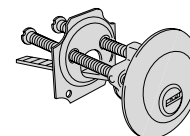
Disegni di ingombro



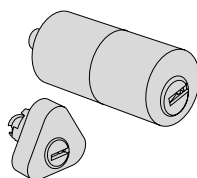
Altri modelli disponibili



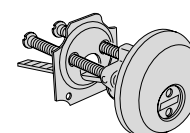
1.0A112.00.0
1.0A114.00.0



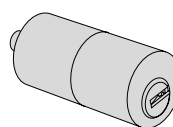
1.0A510.00.0



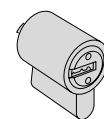
1.0A116.00.0
1.0A120.00.0
1.0A149.00.0
1.0A155.00.0



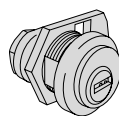
1.0A510.11.0



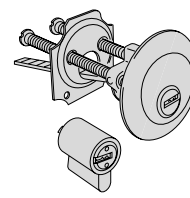
1.0A210.10.0
1.0A210.50.0
1.0A210.60.0
1.0A210.70.0
1.0A210.80.0
1.0A210.90.0



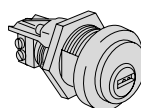
1.0A610.00.0



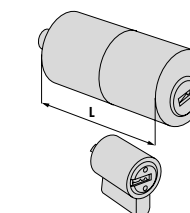
1.0A410.00.0



1.0A115.00.0



1.0A415.01.0
1.0A415.03.0



1.0A150.00.0