

# Penta – Translation Utility

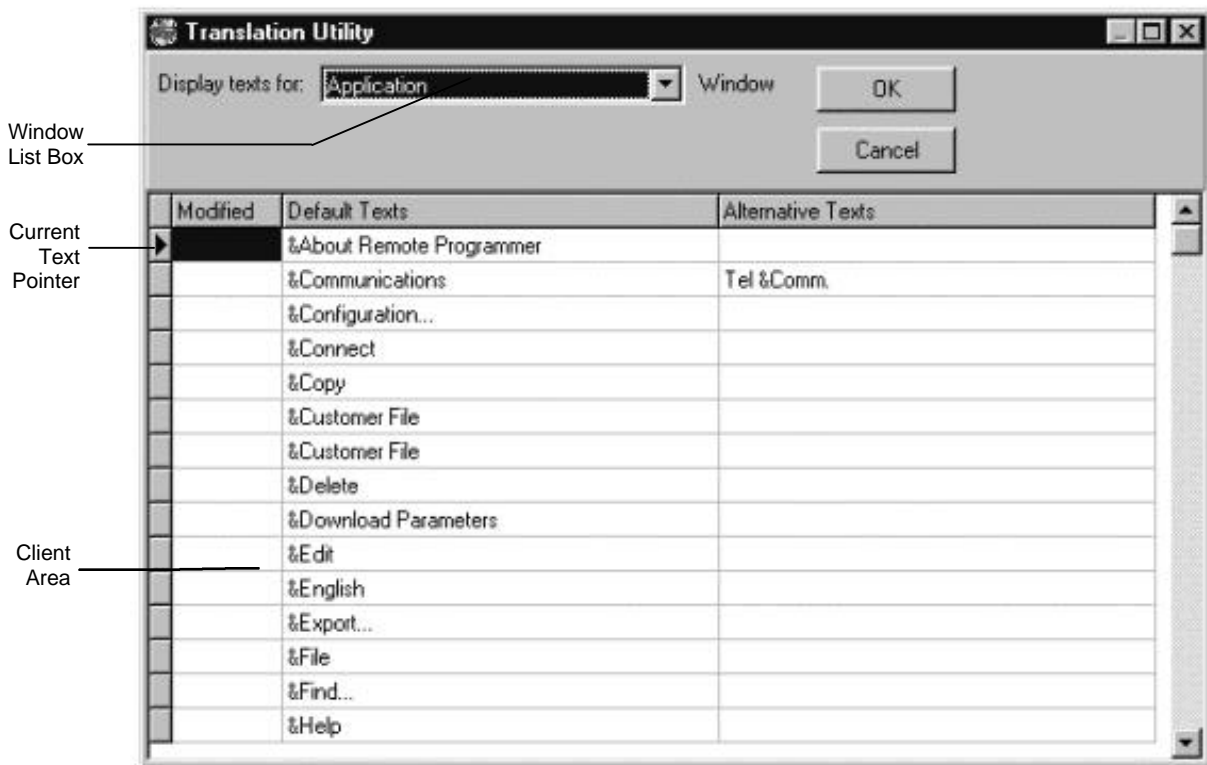
Version 2.20 of the RP Penta software includes a Translation Utility feature. This feature enables you to translate the texts, which appear on the interface, into the language of your choice.

To enable the Translation Utility, enter the code “197811” when you start the program.

## Translating texts

To translate texts:

1. From the Tools menu, choose Language, Translation Utility; the following window appears.



The client area of the Translation Utility window contains three columns:

- **Modified** - When upgrading the RP Penta to a later version, it is possible that new texts have been added to the software. These texts are indicated in this column, enabling you to instantly identify them.
  - **Default Texts** - This column lists all the default texts for the item selected in the Window list box.
  - **Alternative Texts** - Enter all translated texts to this column.
2. From the Window list box, choose the window that contains the texts you want to edit.
  3. Click the default text you want to edit; the current text pointer moves to the selected row.
  4. Enter the new text in the Alternative Texts column. In the example above, Communications has been changed to “Tel. Comm”
  5. Click OK.

## Adding hotkeys

Hotkeys enable the user to choose menu items without having to scroll through the whole menu. These keys appear underlined in the texts. To add a hotkey place the “&” symbol before the letter you require. For example, to define the letter “C” as the hotkey in “Communications”, type the following:

### &Communications

**Important:** If a duplicate hotkey is defined in the same menu, the first will be regarded as the hotkey and the second ignored by the program. The hotkey is not case sensitive. In the above example the hotkey “C” is displayed as a capital letter but a capital “C” need not be entered by the user. Likewise, a lowercase “c” is not regarded as a separate letter and cannot be defined in the same menu.

## Editing texts that contain variables

Some of the texts in the RP Penta contain variables. For example, when an illegal entry is made, the following message appears:

“ '?' is not a valid entry. ”

In this case, the “?” represents a variable. If you enter the letter “b” in a number field, the message reads:

“ 'b' is not a valid entry ”.

**Important:** In messages that contain more than one variable, it is important that the variables appear in the same order in the translated sentence.

## Viewing your changes

To view the changes made to the texts:

- From the Tools menu, choose Language, Other Language; the texts in the interface change to those listed in the Alternative Texts column.

## Transferring language files

Unless specified otherwise during setup, the RP software is installed in the default folder “Electronics Line RP” in drive C. In this folder, the RP software creates the subfolder “Data” where all the language files are found. The language files that contain the translated texts are as follows:

- Lang.dat
- Lang.db
- Lang.fam
- Lang.px
- Lang.tv
- Lang.val
- Lang.xg0
- Lang.yg0

To transfer the language files to another computer:

1. Copy the files listed above from **C:/Electronics Line RP/Data** to a diskette.
2. Insert the diskette into the floppy disk drive (A:) of the destination computer.
3. From My Computer or Windows Explorer, copy all the files from the diskette to **C:/Electronics Line RP/Data**; the following window appears.



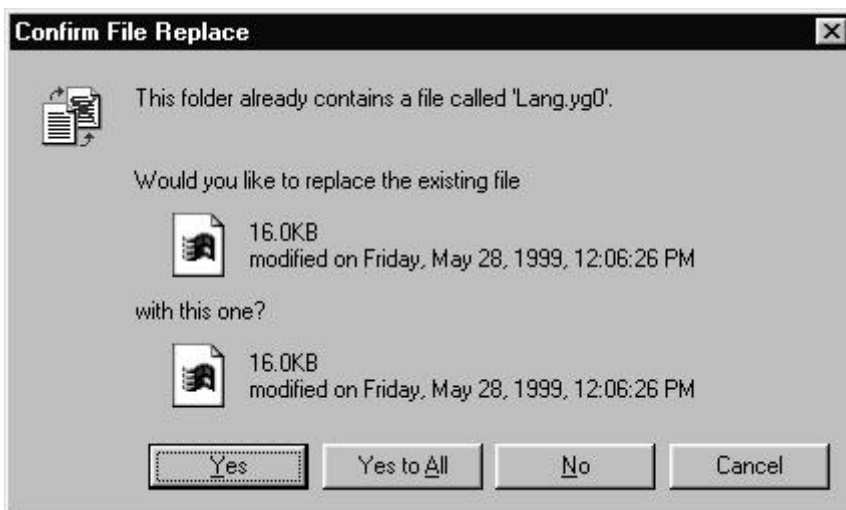
4. Click Yes to All.

# Penta – Changing the interface language

Unless specified otherwise during setup, the RP software is installed in the default folder “Electronics Line RP” in drive C. In this folder, the RP software creates the subfolder “Data” where all the language files are found. The language files that contain the translated texts are as follows:

- Lang.dat
- Lang.db
- Lang.fam
- Lang.px
- Lang.tv
- Lang.val
- Lang.xg0
- Lang.yg0

1. Insert the diskette, containing the above files, into the floppy disk drive (A:) of your computer.
2. From My Computer or Windows Explorer, copy all the files from the diskette to **C:/Electronics Line RP/Data**; the following window appears.



3. Click Yes to All.
4. Start the RP program.
5. From the Tools menu, choose Language, Other Language; the new texts appear on the interface.