



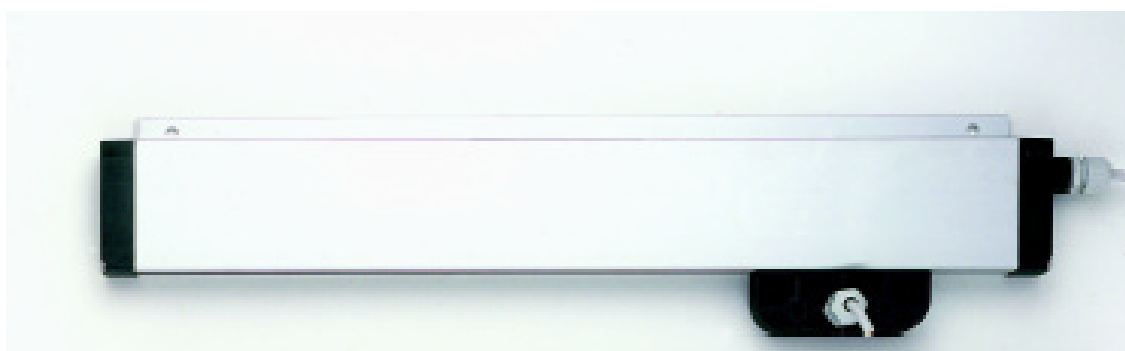
FAAC S.P.A.

V. Benini 1

40069 Zola Predosa (BO) - ITALY

tel. 051/61724 fax 051/758518

Feeder for safety rib



Assembling instructions: Feeder for safety rib

For the assembling of the feeder for safety rib please follow the instructions listed below and see the drawings on page 3 and 4.

1) Insert the **five-pole cable(5)** into the cable driver chain(3), fix one end of the **cable driver chain(3)** to the **glider(4)** through the pin clutch. The cable must be longer than the cable driver chain to be connected to the central units.

N.B. Do not remove or turn the two pre-assembled red rings of the cable drive chain in order to protect the cable.

2) Insert the glider together with the **cable driver chain(3)** into the **aluminium profile(1)**, fix the other end of the **cable driver chain(3)** to the **end plug(7)** through the **pin clutch(9)**, screw the **end plugs(2-7)** in the profile by inserting the **five-pole cable(5)** into the **stop cable connectors PG9(6)**.

3) Fix the profile to the gate by screwing into the section as shown in the drawing(8). Drill the holes to fix the feeder by leaving about 1 meter from each other.

4) Fix the **floating bracket(10)** close to the motor and the **glider(4)** near the **bracket(10)**.

5) Should you join two aluminium bars, please use the elastic pins as shown in picture on page 4 and isolate the two profiles with silicone.

IMPORTANT: the length of the bar has to be longer than the total length of the automation, otherwise the cable driver chain could brake.

You need one meter of cable driver chain(3) for every meter of profile(1).

Please use the elastic pins to join one or more profiles as shown in the picture on page 4.

LEGEND

1) Aluminium profile (in the anodised and non-anodised version) in bars of 3 and 4 meters of length.

2) End plugs

3) Cable driver chain

4) Glider

5) Special cable for mobile laying 5x0.34

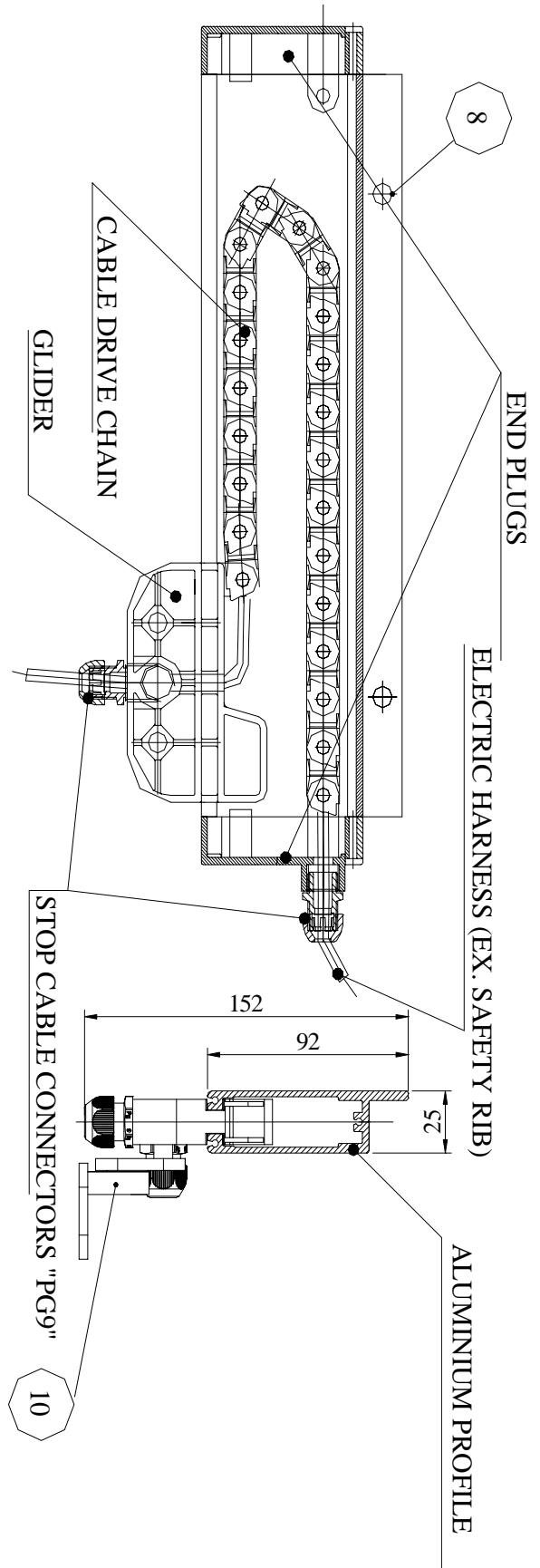
6) PG9 stop cable connectors

7) End plug with PG9 connection

8) Area for the fixing

9) Clutch for the fixing of the cable driver chain

10) Floating bracket



ASSEMBLING INSTRUCTION

