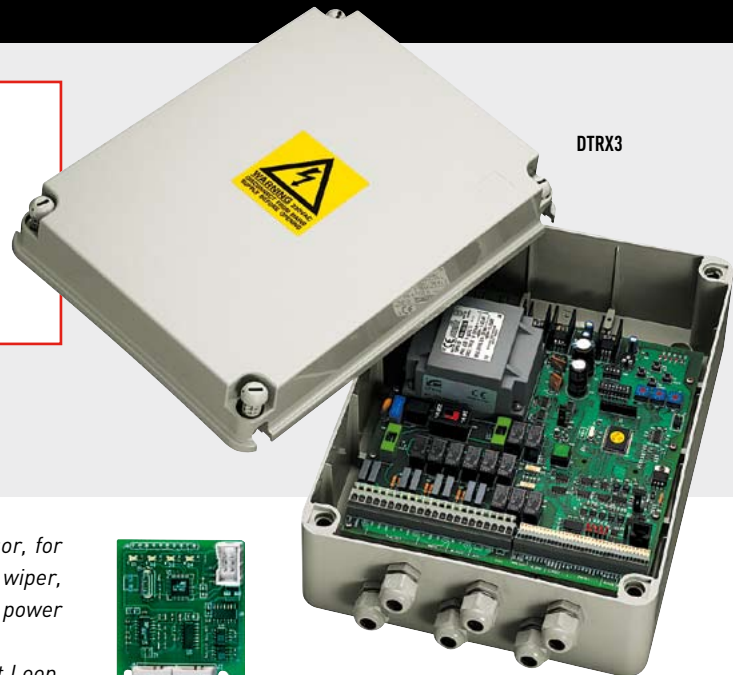


- Microprocessor controlled
- 17 functions
- Standard preset
- RS232, Current Loop or RS485
- Remote controllable up to 1200m (RS485)
- IP56 weatherproof protection



DTCOAX

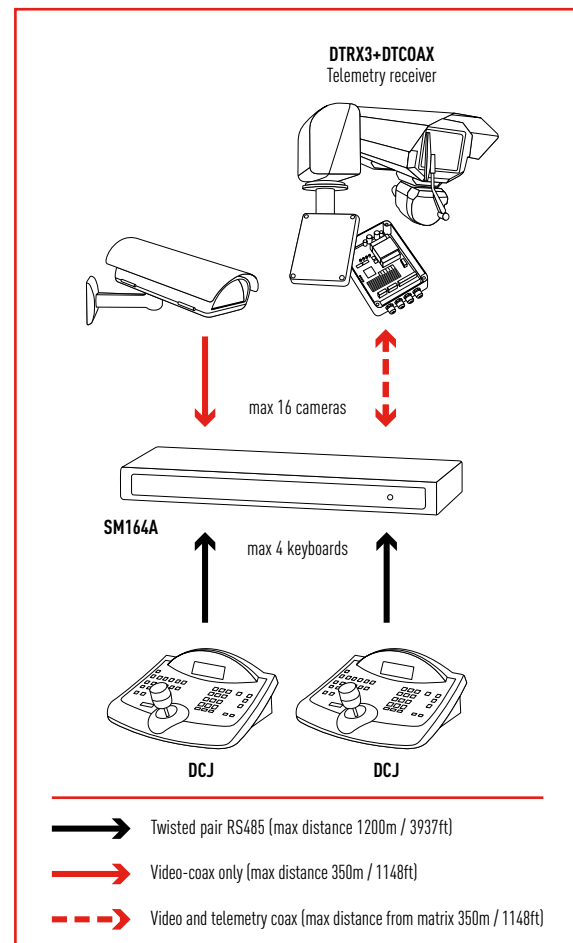
The DTRX3 is a digital receiver, controlled by a microprocessor, for remote control of a Pan & Tilt motor, motor-driven zoom lens, wiper, washer and 4 auxiliary contacts (12V DC and 24V AC camera power supply, 2 dry contacts).

Connection to the control unit can be RS232, RS485 or Current Loop. This digital receiver can be controlled by DCT, DCJ, DCTEL and DCIR keyboards or by PC via RS232 serial connection.

A IP56 weatherproof box ensures protection against all weather conditions. It is also possible to plug-in the DTCOAX optional board for data transmission on coax cable through the SM series matrix.

6 PG11 cable glands make connections easier. By means of a commutator, it is possible to select the Pan & Tilt voltage (230V AC or 24V AC) for the model DTRX3.

DTRX3



TECHNICAL DATA

GENERAL

17 Functions: UP, DOWN, LEFT, RIGHT, AUTO, WASHER, WIPER, ZOOM TELE, ZOOM WIDE, FOCUS NEAR, FOCUS FAR, IRIS OPEN, IRIS CLOSE, AUX1, AUX2, AUX3, AUX4

999 selectable address through Dip Switches

Serial input selectable: RS232 / Current Loop / RS485

Repeater RS232, RS485 or Current Loop for daisy chain configuration

Ability to use both polarity inversion lenses and common wire lenses

LED indicating power supplied to the unit

LED indicating active function

EEPROM for the storage of active options

16 bit microcontroller with re-programmable Flash memory

PRESET / SCAN / PATROL functions with an automatic recognition of the existing functions

Self-test installation procedure

Ability to memorize up to 40 PRESET functions (P&T motor, lens)

4 alarm contacts set as N.O. or N.C.

Supplied with instruction manual, 2 PG11 blanking caps, 4 wall mounts with relevant fastening screws

MECHANICAL

Plastic material enclosure

6 cable glands PG11

External dimensions: 337x237x128mm (13.2x9.3x5in)

ELECTRICAL

DTRX3

Power supply: 230V AC, 50/60Hz

Consumption: 60W

Max switching power: 100W

Power supplied to the positioning device: 24/230V AC, 50/60Hz

Power supplied to the wiper: 24/230V AC, 50/60Hz

Power supplied to the washer: 24/230V AC, 50/60Hz

Power supplied to the camera: 12V DC, max 350mA (AUX1) and 24V AC, max 180mA (AUX2)

Power supplied to the lens: from 3V DC to 12V DC (max 100mA)

2 dry contacts: 1A 230V AC, 1A 24V AC (AUX3, AUX4)

Fuses: F2: 1 AF 250V, F5: 2.5 AF 250V

DTRX324

Power supply: 24V AC, 50/60Hz

Consumption: 40W

Max switching power: 100W

Power supplied to the positioning device: 24V AC, 50/60Hz

Power supplied to the wiper: 24V AC, 50/60Hz

Power supplied to the washer: 24V AC, 50/60Hz

Power supplied to the camera: 12V DC, max 350mA (AUX1) and 24V AC, max 180mA (AUX2)

Power supplied to the lens: from 3V DC to 12V DC (max 100mA)

2 dry contacts: 1A 230V AC, 1A 24V AC, (AUX3, AUX4)

Fuses: F5: 6.3 AF 250V

PROTOCOLS

VIDEOTECH (300, 1200, 9600, 19200 baudrate)

MACRO (1200, 9600, 19200, 38400 baudrate)

PELCO D (2400, 4800, 9600, 19200 baudrate)

Pelco D is registered trademark.

DTRX3 may be interfaced with equipment not manufactured by Videotec. It is possible that the interface protocols have changed or are in a different configuration from earlier tested units. Videotec recommends a bench test prior to installation. Videotec will not be liable for any installation costs or lost revenues in the event a compatibility problem will occur.

COMMUNICATIONS

Selectable communication speed

Repeater RS232, RS485 or Current Loop for daisy chain configuration

Telemetry data input on coax cable RG59 or equivalent with DTCOAX optional board for a max distance 350m (1148ft) from Matrix Series SM

Telemetry data input RS485 on Matrix Series SM serial output for a max distance of 1200m (3937ft)

Telemetry data input RS485 on keyboards serial output for a max distance of 1200m (3937ft)

Telemetry data input RS232 for PC or keyboard control for a max distance of 15m (49ft)

Telemetry data input Current Loop on keyboards serial output for a max distance of 1500m (4921ft)

RELATED PRODUCTS

SM42A-82A	Matrix 4/8 inputs and 2 outputs
SM84A-164A	Matrix 8/16 inputs and 4 outputs
SM328A	Matrix 32 inputs and 8 outputs
DCTEL	Matrix and Telemetry Control Keyboard
DCIR	Infrared Remote Control
DCJ	Matrix Mux and Telemetry Control Keyboard with three axis joystick
DCT	Matrix, Mux, DVR and Telemetry Control Keyboard touch screen equipped with three axis joystick

DTRX3

PTH910P	Pan&Tilt with preset, 230V AC
PTH310P	Pan&Tilt with preset, 230V AC
NXPTH210	Stainless steel Pan&Tilt, 230V AC
IPT720	Pan&Tilt wall mounting, 230V AC
IPTS720	Pan&Tilt ceiling mounting, 230V AC
IPHS720	Pan ceiling mounting, 230V AC

DTRX324

PTH911P	Pan&Tilt with preset, 24V AC
PTH311P	Pan&Tilt with preset, 24V AC
NXPTH211	Stainless steel Pan&Tilt, 24V AC
IPT721	Pan&Tilt wall mounting, 24V AC
IPTS721	Pan&Tilt ceiling mounting, 24V AC
IPHS721	Pan ceiling mounting, 24V AC

Retrofit on discontinued products: contact Videotec for further specifications.

ENVIRONMENT

Indoor / outdoor
 Operating temperature: 0°C / +50°C (+32°F / +122°F)

COMPLIANCE TO

CE according to EN 61000-6-3, EN 60065, EN 50130-4
 IP56



Unit Weight:

DTRX3 2.5kg / 5.5lb
DTCOAX 0.1kg / 0.2lb

Package Weight:

DTRX3 2.9kg / 6.4lb
DTCOAX 0.1kg / 0.2lb

Package Dimensions (BxHxL):

DTRX3 34.5x24x15.5cm / 13.6x9.5x6.1in
DTCOAX 8.5x5.5x11.5cm / 3.4x2.2x4.5in

Master Carton:

DTRX3 5 units
DTCOAX -

