

- Microprocessor controlled
- RS485 communication
- Telemetry control
- Ergonomic design



The DCTEL keyboard is the best solution for the remote control of the SM series matrix and telemetry.

This microprocessor-controlled keyboard allows you to interface and control the video switching of SM42A-82A, SM84A-164A.

The operator can manage the following control functions: video switching, sequences and alarm reset, to matrix set-up through a video menu.

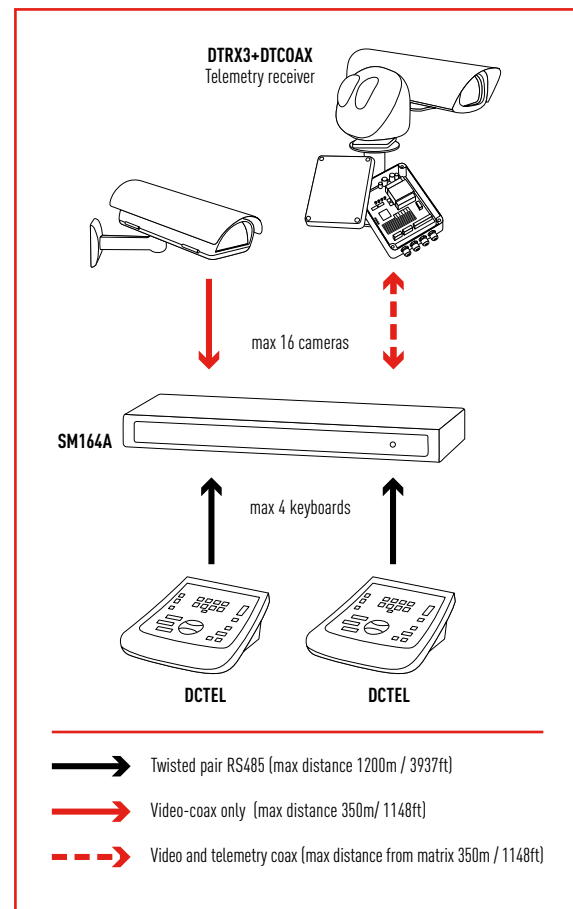
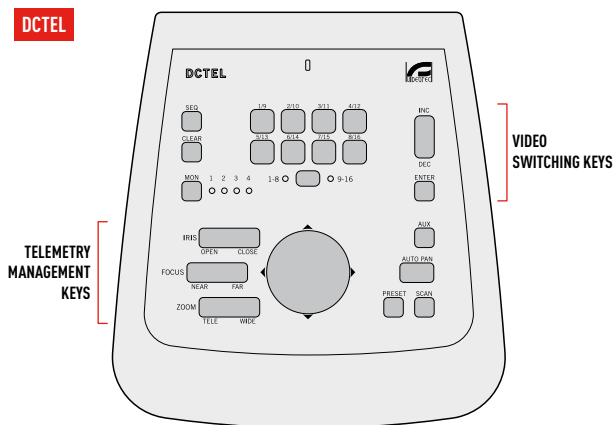
The DCTEL can control up to 16 digital telemetry receivers and the preset and scan functions with the DTRX3 receiver.

Two serial RS485 communication lines: one for the video matrix, one for the management of the telemetry.

The telemetry control can be also performed indirectly through the matrix or over the matrix RS485 dedicated serial output: autopan, preset, scan, zoom, focus iris and Aux.

The DCTEL can be fed by the standard external power supply or directly by the matrix up to a maximum of 700m (2297ft).

**DCTEL**



11  
CONTROL KEYBOARDS

### TECHNICAL DATA

#### GENERAL

16 cameras, control of max 16 telemetry receivers  
 P&T control, autopan, preset, zoom, focus, iris, Aux  
 Max 8 preset position for each P&T  
 Alarm reset  
 Supplied with instruction manual, wide range power supply, 3 power cables, 4 telephone cables, 4 jack shunt boxes RJ jack

#### MECHANICAL

Thermo resistant and shock proof ABS material  
 22 rubber keys  
 Dimensions 80x190x205mm (3.4x7.5x8in)  
 2 connectors RJ11  
 Power supply jack connector  
 Configuration Dip-Switch  
 4 LEDs indicating the active monitor  
 8 LEDs indicating the active camera  
 2 LEDs indicating the active camera group (cameras 1 to 8 or cameras 9 to 16)  
 Power supply LED

#### ELECTRICAL

**Power supply**  
 - IN 100-240V AC - OUT 12V DC, 47/63Hz, 1A  
 It can be fed directly by matrix SM42A-82A, SM84A-164A to a maximum of 700m (2297ft)

#### PROTOCOL

**Video Line**  
 VIDEOTECH (1200, 9600, 19200, 38400 baudrate)  
 MACRO (1200, 9600, 19200, 38400 baudrate)  
**Telemetry Line**  
 VIDEOTECH (1200, 9600, 19200, 38400 baudrate)  
 MACRO (1200, 9600, 19200, 38400 baudrate)  
 PELCO D (2400 baudrate)  
 ENEO (1200, 9600, 19200, 38400 baudrate)  
*Pelco and Eneo are registered trademarks.*

#### COMMUNICATIONS

Two RS485 lines for communication:  
 - one line for communication with matrix controllable to a maximum of 1200m (3937ft)  
 - one line for telemetry control up to 16 receivers  
 Selection of communication rates

#### RELATED PRODUCTS

<b>SM42A-82A</b>	Matrix 4/8 inputs and 2 outputs
<b>SM84A-164A</b>	Matrix 8/16 inputs and 4 outputs
<b>MICRODEC485</b>	Mini telemetry receiver 8 functions, 24V AC
<b>DTMRX224</b>	Telemetry receiver 12 functions, 24V AC
<b>DTMRX2</b>	Telemetry receiver 12 functions, 230V AC
<b>DTRX324</b>	Telemetry receiver 17 functions, 24V AC
<b>DTRX3</b>	Telemetry receiver 17 functions, 230V AC
<b>DTCOAX</b>	Over the coax board for DTRX3 only trough matrix series SM
<b>DTRXDC</b>	Telemetry receiver 13 functions, for PTH355P (only fix speed)

*Retrofit on discontinued products: contact Videotec for further specifications.*

#### ENVIRONMENT

Indoor  
 Operating temperature: 0°C / +40°C (+32°F / +104°F)

#### COMPLIANCE TO

CE according to EN 61000-6-3, EN 60950, EN 55022 Class B, EN 50130-4  
 FCC according to Part. 15 Class B



**Unit Weight:**  
 DCTEL 0.6kg / 1.3lb

**Package Weight:**  
 DCTEL 1.9kg / 4.2lb

**Package Dimensions (BxHxL):**  
 DCTEL 31x17.4x26.4cm / 12.2x6.1x10.4in

**Master Carton:**  
 DCTEL 5 units