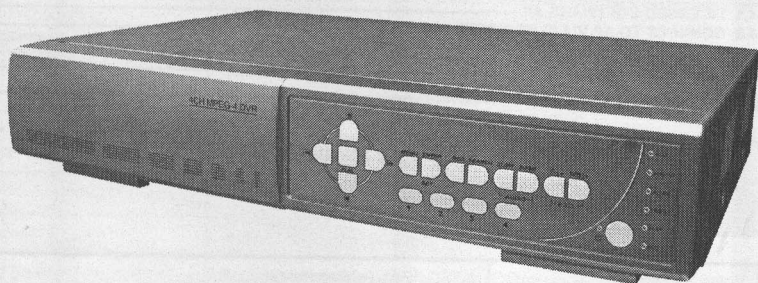


# QUICK START

149

ENGLISH



## 4 CH MPEG-4 DVR

For detailed instructions, please refer to user's manual in the disk.

Please read instructions thoroughly before operation and retain it for future reference.

781(ENGLISH)\_V0.92

## TABLE OF CONTENTS

### FUNCTIONS

|                         |   |
|-------------------------|---|
| 1.1 SPECIFICATION ..... | 1 |
| 1.2 FRONT PANEL .....   | 3 |
| 1.3 REAR PANEL .....    | 4 |

### GETTING STARTED

|                             |   |
|-----------------------------|---|
| 2.1 GETTING STARTED .....   | 5 |
| 2.2 SYSTEM TIME SETUP ..... | 5 |

### BASIC OPERATION

|                       |   |
|-----------------------|---|
| 3.1 RECORDING .....   | 6 |
| 3.2 PLAYBACK .....    | 6 |
| 3.3 MENU TREE .....   | 7 |
| 3.4 USB UPGRADE ..... | 8 |

### NETWORK OPERATION

|  |   |
|--|---|
| 4.1 LICENSED SOFTWARE AP .....         | 8 |
| 4.2 CONNECT TO AP VIA IE BROWSER ..... | 9 |

|  |    |
|--|----|
| <b>APPENDIX #1</b> INSTALL THE HDD ..... | 10 |
|--|----|

|  |    |
|--|----|
| <b>APPENDIX #2</b> PIN CONFIGURATION ..... | 10 |
|--|----|

## SPECIFICATION

### 1.1 SPECIFICATION

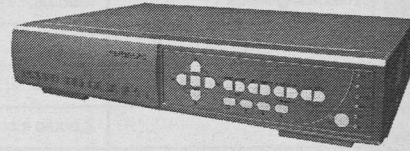
|                            |   |
|----------------------------|---|
| Video System               | NTSC / PAL (switch able)  |
| Video Compression Format   | MPEG 4  |
| Video Input                | 4 Channels. Composite video signal 1 Vp-p 75Ω BNC   |
| Video Loop Out             | 4 Channels. Composite video signal 1 Vp-p 75Ω BNC   |
| Video Output               | Main Monitor Output: Composite video signal 1 Vp-p 75Ω BNC<br>Call Monitor Output: Composite video signal 1 Vp-p 75Ω BNC  |
| Maximum Recording Rate     | Frame: 720 × 480 pixels with 30 IPS <NTSC> /<br>720 × 576 pixels with 25 IPS <PAL><br>Field : 720 × 240 pixels with 60 IPS <NTSC> /<br>720 × 288 pixels with 50 IPS <PAL><br>CIF: 352 × 240 pixels with 120 IPS <NTSC> /<br>352 × 288 pixels with 100 IPS <PAL> |
| Adjustable Recording Speed | Frame: 30, 15, 7, 3 IPS <NTSC> / 25, 12, 6, 3 IPS <PAL><br>Field: 60, 30, 15, 7 IPS <NTSC> / 50, 25, 12, 6 IPS <PAL><br>CIF: 120, 60, 30, 15 IPS <NTSC> / 100, 50, 25, 12 IPS <PAL>   |
| Image Quality Setting      | Best, High, Normal, and Basic   |
| Hard Disk Storage          | IDE type, ATA66, supported HDD * 1, support HDD capacity over 400GB   |
| HDD Quick Cleaning         | Quick clean up the "index system" of the recorded files.<br>250GB under 2 seconds   |

| Specification Continued...             |  |
|--|--|
| Recording Mode                         | Manual/Timer/Motion/Alarm  |
| Watermark                              | Yes  |
| Refresh Rate                           | 120 IPS for NTSC / 100 IPS for PAL                                   |
| Audio I/O                              | 2 audio inputs, 1 audio output (Mono)                                |
| Motion Detection Area                  | 16 × 12 grids per camera for all channels                            |
| Motion Detect Sensitivity              | 4 adjustable variables with precise calculation for motion detection |
| Pre-alarm Recording                    | Yes (8MB)  |
| USB Interface                          | Support USB 1.1/ 2.0 device  |
| Backup Device                          | USB 1.1 / 2.0 backup device and network remote backup                |
| Web Transmitting Compression Format    | Motion JPEG  |
| Ethernet                               | 10/100 Base-T. Support remote control and live view via Ethernet     |
| Web Interface                          | Support licensed software AP, and IE browser                         |
| Remote Alarm Notification              | E-mail images, and images uploading to FTP site's specific account   |
| Network Connection                     | Support TCP/IP, PPPoE, DHCP and DDNS functions                       |
| PTZ control                            | Support PELCO-D protocol   |
| Dwell Time (Sequential Channel Switch) | Programmable with adjustable dwell time                              |
| Alarm I/O                              | 4 inputs, 1 output   |
| Digital Zoom                           | 2X digital zoom (live mode)  |
| Key Lock                               | Yes  |
| Video Loss Detection                   | Yes  |
| Camera Title                           | Support up to 6 letters  |
| Video Adjustable                       | Hue/Color/Contrast/ Brightness                                       |
| Date Display Format                    | YY/MM/DD, DD/MM/YY, MM/DD/YY, and Off                                |
| Power Source                           | DC 19V   |
| Power Consumption                      | < 42 W   |
| Operating Temperature                  | 10°C ~ 40°C (50°F~104°F)   |
| Dimensions (mm)                        | 343mm (W) × 59mm (H) × 223mm (D)                                     |
| System Recovery                        | System auto recovery after power reconnected                         |
| <b>Optional Peripheral</b>             | <b>VGA connector</b>   |

Any changes made to the actual product are subjects to no further notification.

## 1.2 FRONT PANEL

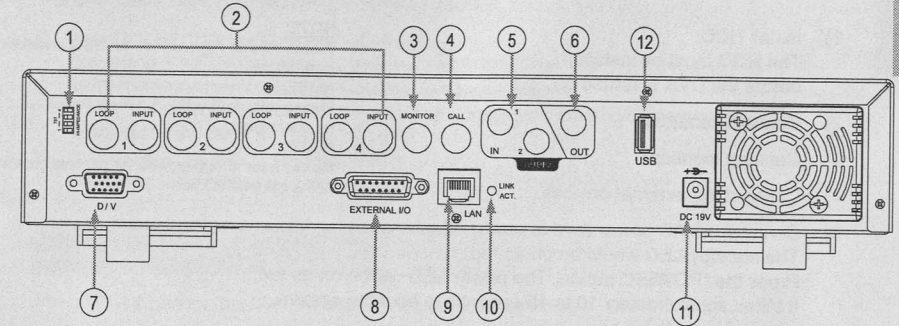
- 1) "LED LIGHT":
- 2) "MENU":  
Press "MENU" button to enter main menu.
- 3) "ENTER" / "SET":  
Press "ENTER" button to confirm.



Press "SET" to change channel display position.  
Press "▲▼◀▶" to select the channel which you like to change,  
Press "+" or "-" select the channel which You would like to show.  
Press "ENTER" button to confirm.

- 4) "SEARCH":  
Press "SEARCH" button to enter the search mode.
- 5) "SLOW":  
Under playback mode, press "SLOW" button to show slow playback.
- 6) "ZOOM":  
Press "ZOOM" button to enlarge the picture of selected channel (under live mode).
- 7) "4" / "3" / "2" / "1":  
Press "4" button to show the 4 channel display mode.  
Press "-" button to change the setting in the menu.
- 8) "SEQ" / "+" :  
Press "SEQ" button to activate the call monitor function and press "SEQ" button again to escape the call monitor mode.  
Press "+" button to change the setting in the menu.
- 9) "POWER":  
Press this button to turn on / off the DVR.  
(Under recording mode, please stop record before turn off the DVR).
- 10) "CH1" "CH2" "CH3" "CH4":  
Press "1" "2" "3" "4" buttons to select the channel.
- 11) "REC":  
Press "REC" button to activate the manual recording.
- 12) "PLAY":  
Press "PLAY" button to playback the recorded files.
- 13) "UP / PAUSE, DOWN / STOP, LEFT / FAST REWIND, RIGHT / FAST FORWARD":  
Press "▲▼◀▶" to move the cursor up / down / left / right.  
Under playback mode, press "⏸" button to pause playback.  
Under playback mode, press "⏹" button to stop playback.  
Under playback mode, press "⏮" button to fast rewind.  
Under playback mode, press "⏭" button to fast forward.
- 14) "AUDIO":  
Press these two buttons to select live or playback sounds of the 2 audio channels.
- 15) "PTZ":  
Press these two buttons at the same time to enter / exit the PTZ control mode.
- 16) Press "POWER" button on the DVR front panel to shutdown, and then press "POWER" + "▶" to switch to PAL system.  
(Press the buttons until the monitor show the video image of the DVR.)
- 17) Press "POWER" button on the DVR front panel to shutdown, and then press "POWER" + "◀" to switch to NTSC system.  
(Press the buttons until the monitor show the video image of the DVR.)
- 18) Press "MENU" + "ENTER" buttons on the DVR front panel to key lock.

## 1.3 REAR PANEL



- 1) 75Ω / HI:  
When using Loop function, please switch to HI. When you don't use Loop function, please switch to 75Ω.
- 2) VIDEO INPUT (CHANNEL 1 - 4): Connect to video source, such as camera.  
LOOP (CHANNEL 1 - 4): Video output.
- 3) MONITOR:  
Connect to Main monitor.
- 4) CALL MONITOR:  
Connect to CALL monitor. Show the channel switch display. When the alarm is triggered, the call monitor will show the image of the triggered channel for a period of time.
- 5) AUDIO IN :  
Connect to audio source, such as camera which equipped with audio function.  
When users start the recording function, the audio input will be recorded.
- 6) AUDIO OUT :  
Connect to monitor or speaker.  
With 1 mono audio output from the same source.
- 7) D/V PORT (Digital Video Port):  
Connect to VGA connector card.
- 8) EXTERNAL I/O PORT:  
Connect to external device. Control external device or controlled remotely by external device (alarm input, external alarm).
- 9) LAN:  
Connect to Internet by LAN cable.
- 10) LINK / ACT LED light:  
When the Internet is activated, the LED light will be on
- 11) POWER:  
Connect to provided adapter.
- 12) USB:  
Support firmware update and files backup.

## GETTING STARTED

### 2.1 GETTING STARTED

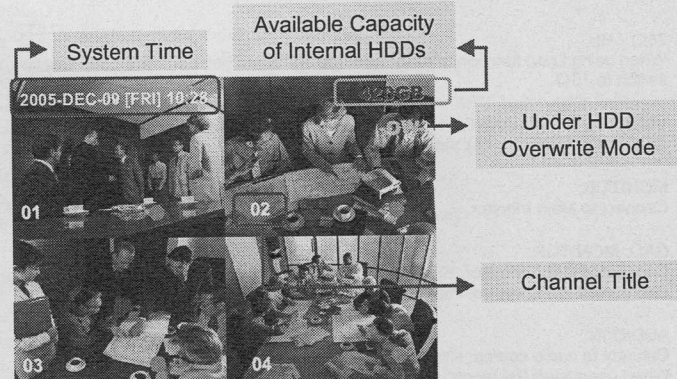
Connecting all the devices to construct a surveillance.

- 1) Install HDD:  
The HDD must be installed before the DVR is turned on.
- 2) Connect cameras.
- 3) Connect monitors.
- 4) Connect the external devices.
- 5) Connect the AC power cord to power adapter and plug into an electrical outlet.  
The standby LED would be on as red.  
Press the "POWER" button. The power LED will be on as red.  
It takes approximately 10 to 15 seconds to boot the system.

**NOTE:**  
Please refer to Appendix #1 for HDD installation instructions.

**NOTE:**  
Please refer to "Section 1.3 Rear Panel" for connection.

**NOTE:**  
Please refer to Appendix#2 for pin configurations of the external I/O port.



### 2.2 SYSTEM TIME SETUP

Go to Menu mode, move the cursor to "DATE", and press "ENTER", then the screen will show the following options.

|   |                        |                      |
|---|------------------------|----------------------|
| (MENU)<br>RECORD<br>TIMER<br><b>DATE</b><br>ADVANCE | <b>DATE</b>            |                      |
|   | DATE                   | 2006-JAN-13 16:35:22 |
|   | FORMAT                 | Y-M-D                |
|   | DAYLIGHT SAVING        | ON                   |
|   | <b>DAYLIGHT SAVING</b> |                      |
|   | START                  | 4TH-SUN-MAR 01:00:00 |
|   | END                    | 4TH-SUN-OCT 01:00:00 |
|   | ADJUST                 | 01:00                |

**NOTE:** The illustrated setting means: During the daylight saving time period (start from the 4<sup>th</sup> Sunday of March, end on the 4<sup>th</sup> Sunday of October), the DVR system time will plus one hour.

## BASIC OPERATION

### 3.1 RECORDING

The DVR offers three recording modes: manual record, event recording, and timer record. The DVR offers three recording image size: FRAME, FIELD, and CIF.

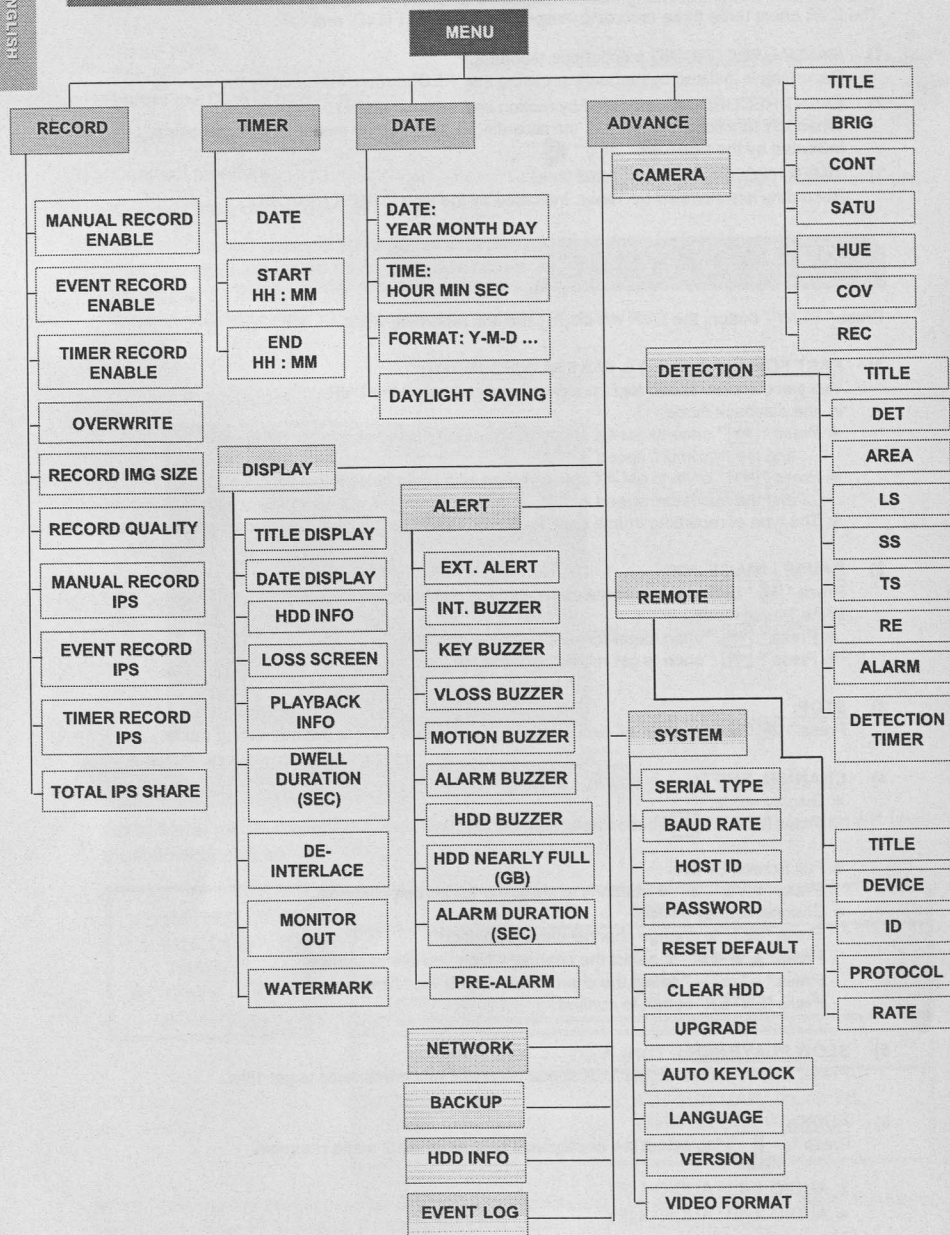
- 1) **MANUAL RECORDING** (continuous recording) :  
Recording is initiated by manually pressing the "REC" button. Indicated by the sign "●".
- 2) **EVENT RECORDING** (triggered by motion and external alarm) :  
When this functions is activated, the recording is triggered by motion or external alarm. Indicated by the sign "■" and "■".
- 3) **TIMER RECORDING** (scheduled time) :  
Recording is scheduled by Timer. Indicated by the sign "TIMER RECORD".

### 3.2 PLAYBACK

Press "PLAY" button, the DVR will display the last recording video.

- 1) **FAST FORWARD (F.F.) & FAST REWIND (REW):**  
You can increase speed for fast forward and rewind on the DVR.  
In the playback mode,  
\* Press "▶▶" once to get 4X speed forward and press twice to get 8X speed, ... and the maximum speed is 32X.  
\* Press "◀◀" once to get 4X speed rewind and press twice to get 8X speed, ... and the maximum speed is 32X.  
\* The type of recording image size (Frame or FIELD or CIF ) will also shown on the screen.
- 2) **PAUSE / IMAGE JOG:**  
Press "⏸" button to pause the current image displayed on the screen.  
In the Pause mode,  
\* Press "▶▶" once to get forward by frame change.  
\* Press "◀◀" once to get rewind by frame change.
- 3) **STOP:**  
Press "■" button under all circumstance, it will return DVR to live monitoring mode.
- 4) **CHANNEL SHIFT:**  
\* Display mode:  
Press MODE "⏏" button to 4 channels display.  
  
\* Full Screen Switch:  
Press "1" "2" "3" "4" buttons to show the full screen channels.  
\* Channel display switch:  
Press "SET" to change channel display position.  
Press "▲▼◀▶" to select the channel which you like to change,  
Press "+" or "-" select the channel which you like show.  
Press "ENTER" button to confirm.
- 5) **SLOW PLAYBACK:**  
Press "SLOW" button to get 1/4X speed playback and press twice to get 1/8X.
- 6) **AUDIO:**  
Press "🔊" to select live or playback sounds of the 2 audio channels.  
\* AUDIO 1 (L) ; AUDIO 1 (P)  
\* AUDIO 2 (L) ; AUDIO 2 (P)

### 3.3 MENU TREE



### 3.4 USB UPGRADE

Users can use USB to upgrade.

Please format the USB memory device as FAT 32 format first.

- 1) Get the upgrade files from your distributor.
- 2) Save the upgrade files in your USB device (Do not change the file name).
- 3) Go to the "MAIN MENU – SYSTEM - UPGRADE", and press "ENTER".
- 4) Select "YES", and press "ENTER" again to confirm upgrade.

NOTE:

- ① The USB format must be "FAT 32".
- ② If the USB can't be detected by the DVR, the "USB ERROR" message will on the screen.

## NETWORK OPERATION

### 4.1 LICENSED SOFTWARE AP


- 1) Install the Software:


- ① Place the attached CD into CD-ROM and it will start to install application programs into PC (Including AP and JAVA program).
- ② The PC will run the setup file automatically.
- ③ After setup, user will see "Video Server E" icon on the desktop.

NOTE:

For the latest version of the software AP, please refer to your distributor, or refer to "Section 4.3 CONNECT TO AP VIA IE BROWSER".

- 2) Software Operation:

- ① Connect DVR to PC via RJ45 network line.
- ② LAN Setting :  
The default DVR IP is "192.168.1.10", and default "username" and "password" are both "admin". Users should set PC's IP address as "IP:192.168.1.XXX (1~255, except 10)" (in order to make the PC and DVR under the same domain).
- ③ Double click  to enter login page.  
Key in IP (192.168.1.10), username (admin), password (admin), port (80) in the login page. After connect to the DVR with local LAN, users could modify the network settings in DVR or in system config of the licensed software AP.

- ④ **Network Type ~ Static IP :**  
Set the network information in the DVR menu or in System Config of the licensed software AP.
- Network Type ~ Dynamic IP (DHCP and PPPoE) :**  
Set the Network information in System Config of the licensed software AP.  
For detailed DHCP and PPPoE setting, please refer to P.32 and P.33 of the manual.
- ⑤ After setup the network information, double click  to enter login page.  
Key in "Username", "Password", "IP" (Static IP) or "Host name" (Dynamic IP), and "Port". And then click the green button to connect.

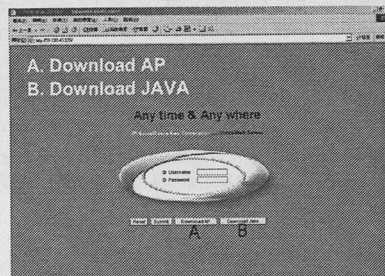
## 4.2 CONNECT TO AP VIA IE BROWSER

The DVR can be viewed over the network with a web browser. Please install licensed software AP first.

**\*\*\* This function is suitable in both Windows 2000 and Windows XP \*\*\***

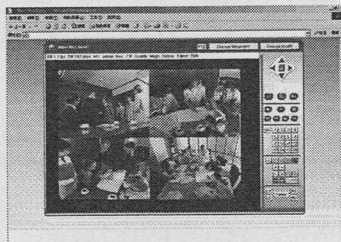
**Step 1:** Type in IP address into the URL address box and press enter.  
Then you'll see the following page.

**Note:** If the TCP port number is not 80, see the example below.  
IP address: 60.121.46.236 ; Port number: 888  
→ Key in "60.121.46.236 :888" into the URL address box and press enter.



**NOTE:** Users can download the latest AP version from the website.  
**NOTE:** Users can update the JAVA program from the website.

**Step 2:** Key in the "username" and "password" to login.



## APPENDIX 1 & 2

### APPENDIX #1 – INSTALL THE HDD

Carefully following the steps to ensure correct installation.

**\*\*\* Note:** Please set the HDD to "Master Mode" or "Single Mode" \*\*\*



Fig. 1

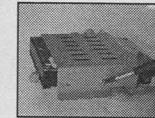


Fig. 2



Fig. 3



Fig. 4



Fig. 5

- 1) Open the upper cover of the DVR and screw out the bracket.
- 2) Screw HDD to the HDD bracket. (Refer to Fig.1 & 2)
- 3) Connect the HDD to power connector and IDE BUS (make sure to align the HDD precisely to the pin connection)  
And then screw the HDD bracket onto DVR base. (Refer to Fig. 3)
- 4) Close the upper cover of the DVR. (Refer to Fig. 4 & 5)

### APPENDIX #2 – PIN CONFIGURATION

