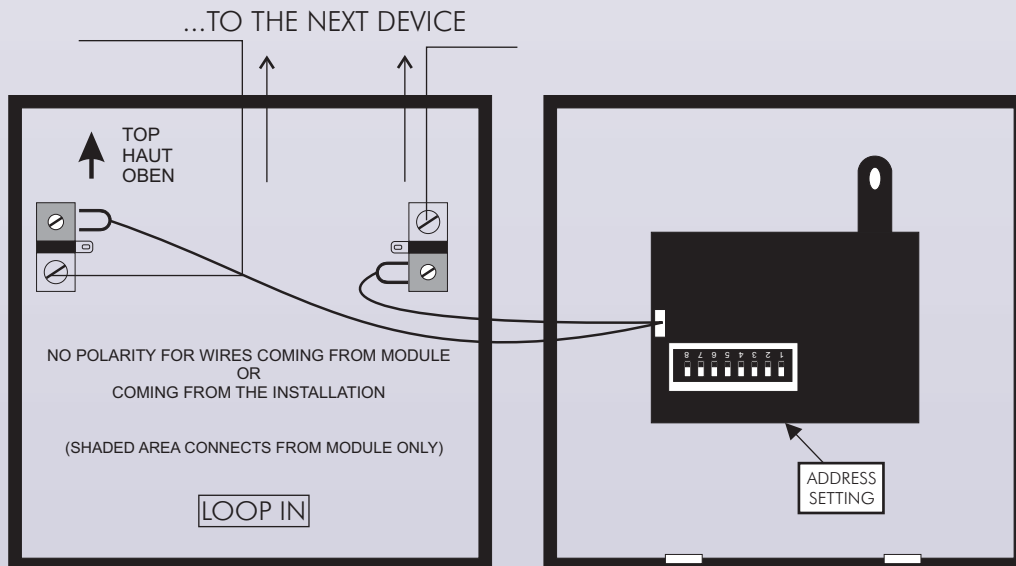


DATA SHEET

MCPA-KAC

KAC MANUAL CALL-POINT

The MCPA-KAC is a BS 5839 compliant surface or flush mounting addressable manual call point compatible with all GFE Addressable control panels. With its enhanced communications mechanism, the typical response time is approximately one second, depending on the number of call points per loop. A bi-colour LED flashes Green when the unit is interrogated by the control panel and is illuminated Red when activated. The command to illuminate the Red LED is emitted by the control panel in response to activation of the individual call point thus confirming that the Alarm signal has been received at the control panel. The individual address, up to 125, of each call point is set via an eight way DIL switch. The unit is supplied with a surface mount back box



SPECIFICATIONS

SUPPLY	Loop Power	DIMENSIONS (UNBOXED)	87 x 87 x 50 mm
LOOP CURRENT QUIESCENT	0,35mA	WEIGHT (UNBOXED)	150 grams
LOOP CURRENT MAX (Alarm, LED Illuminated)	3,1mA	OPERATING TEMPERATURE	0-85°C
MAX. RECOMMENDED PER LOOP	30	HUMIDITY	<85%Rh non condensing
MAX CABLE SIZE	2,5 mm ²	PROTECTION CATEGORY	IP 240
		ORDERING INFORMATION	MCPA-KAC