

Quick Start Guide

Light Switch

Install guide & FAQ:
Scan QR code or visit
<https://www.tp-link.com/support/faq/3360/>

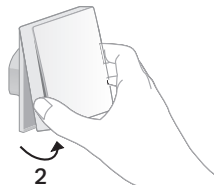
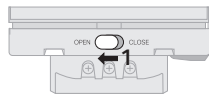


Install with videos:
Scan QR code or visit
<https://www.tp-link.com/support/download/tapo-s210/>

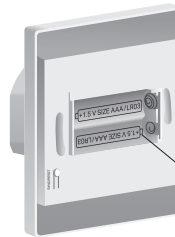


1. Power Up Your Switch

- Slide the lock to the OPEN position. Then hold both sides of the faceplate and pull it away from the back.



- Insert the batteries. Make sure the positive and negative terminals of the batteries face the correct direction.



2* 1.5 V AAA/LR03 batteries

Rated Voltage of the Switch:
DC 2.4 V ~ 3.3 V

? FAQs on Batteries

Q1: Do I need to cut off power when replacing batteries after installation?

A1: There is no need to cut off power. Your safety is ensured as long as the wiring is done correctly, with the exposed wire length being less than 7 mm and no wire short-circuiting to the metal wire box or the fixing screws of the switch.

Q2: When do I need to replace batteries?

A2: If the LED blinks 3 times when you press the switch, the batteries need replacing.

Q3: What types of batteries can I use?

A3: 1.5 V AAA/LR03 alkaline batteries are recommended.

Note: Too high voltage might damage the switch. Check the max output voltage with the manufacturers if you use other types of batteries.

2. Set Up Your Switch

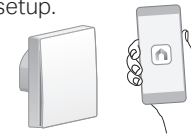
- Get the **Tapo** app from the App Store or Google Play.



OR

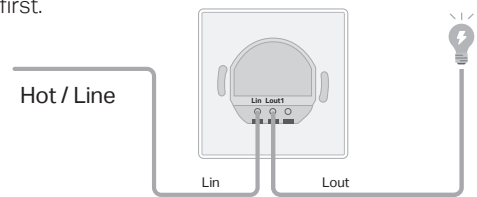


- Tap the ⊕ button in the app and select your model. Follow the instructions in the app to complete setup.



3. Wire Your Switch

Install your switch following the wiring diagram below. Make sure you **turn off the circuit breaker** first.

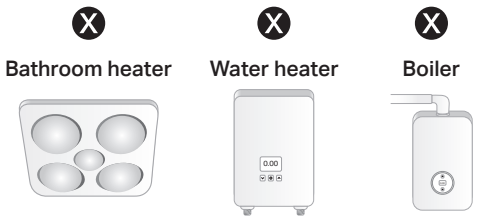


- The **hot / line wire** is usually connected to the terminal “C” or “L” of your dumb switch. The switch also works if you do not distinguish between Lin and Lout wires.
- If the dumb switch is connected with a **Neutral** wire, cover it with the provided wire nut.



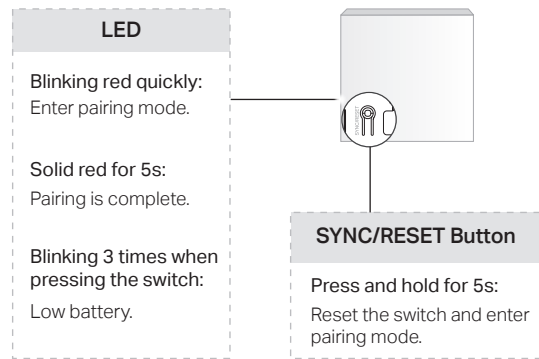
! Use Instructions

- This switch can only be used with light fixtures and fans.
- Connected fans should be below 50 W.
- Do NOT connect the switch to heating devices such as bathroom heaters, water heaters, and boilers.



*Images are only for demonstrations.

Internal LED & Button



For EU / UK Region:

Operating Frequency / Nominal Operating Frequency / Max Output Power:
863~865MHz / 863.35MHz / 25mW (e.r.p)
863~865MHz / 864.35MHz / 25mW (e.r.p)
868~868.6MHz / 868.35MHz / 25mW (e.r.p)

Safety Information

- Before installing, servicing or removing the switch, read and follow all safety precautions including the following:
- Follow all national and local safety regulations and practices. If you are uncertain or uncomfortable when performing the installation, consult a qualified electrician.
 - CAUTION – Risk of Electric Shock – More than one disconnect switch may be required to de-energize the equipment before servicing. A circuit breaker which disconnects the Line and Neutral conductor simultaneously is suitable. Ensure power is off at the circuit breaker before removing or installing any switch. Use a non-contact voltage tester to ensure the power is off.
 - Do not install the Smart Switch with wet hands or when standing on wet or damp surfaces.
 - Keep the device away from water, fire, humidity or hot environments
 - Do not attempt to disassemble, repair, or modify the device. If you need service, please contact us.
 - Do not use the device where wireless devices are not allowed.

TP-Link hereby declares that the device is in compliance with the essential requirements and other relevant provisions of directives 2014/53/EU, 2009/125/EC, 2011/65/EU and (EU)2015/863.

The original EU Declaration of Conformity may be found at <https://www.tapo.com/en/support/ce/>
TP-Link hereby declares that the device is in compliance with the essential requirements and other relevant provisions of the Radio Equipment Regulations 2017.

The original UK Declaration of Conformity may be found at <https://www.tapo.com/support/ukca/>



©2023 TP-Link



For technical support, user guides, FAQs, warranty and more, please visit www.tapo.com/support/

