



# AC1750 Dual-Band Mesh Wi-Fi Range Extender

Works with any Wi-Fi Router<sup>†</sup>



OneMesh™

RE450



Wi-Fi  
Dead-Zone Killer



Gigabit  
Ethernet Port



3 × 3  
MU-MIMO



Easy Setup  
via Tether App

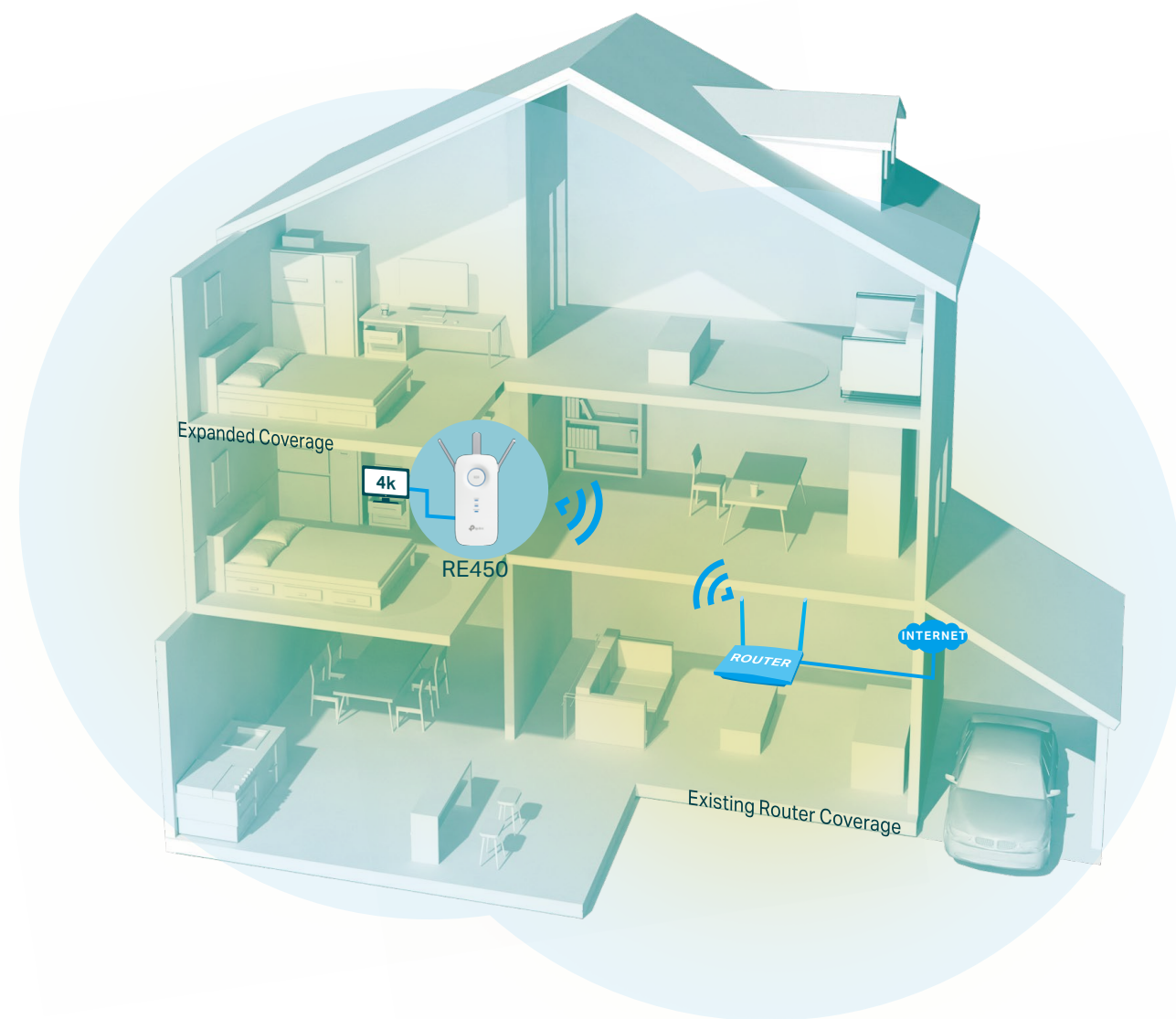


Uninterrupted  
Streaming

# Highlights

## Eliminate Wi-Fi Dead Zones with Powerful Wi-Fi

The AC1750 Wi-Fi Range Extender connects to your router wirelessly, strengthening and expanding its signal into areas it can't reach on its own, achieving speeds of 450Mbps on the 2.4 GHz band and 1300Mbps on the 5 GHz band.



### 6-Stream Dual Band

Separate 2.4GHz and 5GHz Wi-Fi bands allow more devices to connect to your network without reducing performance.



### 3 × 3 MU-MIMO

Improves overall speed and Wi-Fi throughput with 3× faster performance by simultaneous communication to multiple devices.<sup>^</sup>



### Access Point Mode

Create a new Wi-Fi access point to enhance your wired network with Wi-Fi capability.



### High Speed Mode

Use both Wi-Fi bands to establish one super-high-speed connection, ideal for HD streaming and gaming.



### Access Control

Allow or restrict internet access for certain devices for specifiable amounts of time.



### Easy Setup and Management

Via the WPS button / Tether app / Web UI.

# Highlights

## More Than A Traditional Wi-Fi Extender

Connect with any Wi-Fi router to boost your Wi-Fi range or to a OneMesh™ router to create a mesh network for seamless whole-home coverage.



### Wi-Fi Dead-Zone Killer

Eliminate weak signal areas with Wi-Fi coverage for the whole house.



### One Wi-Fi Name

Stay connected to the same network name in every room.



### Unified Management

Manage your mesh network from the Tether app or web UI.



### Uninterrupted Streaming<sup>s</sup>

Enjoy uninterrupted streaming, surfing, and more—even when moving around your home.



Check the full list of OneMesh™ extenders and routers at

<https://tp-link.com/onemesh/compatibility>

\*More compatible devices coming soon

## AC1750 Mesh Wi-Fi Extender

An Intelligent Signal light helps you quickly find the best location to install the range extender.



Strong Signal



Weak Signal

### Three External Antennas

Establish stronger connections and greater Wi-Fi coverage.

### Secure One-touch Connection (WPS)

Instantly connect to the router with the touch of the WPS button.

### Gigabit Ethernet Port

Provides high-speed wired access, ideal for your high-bandwidth needs.



PC



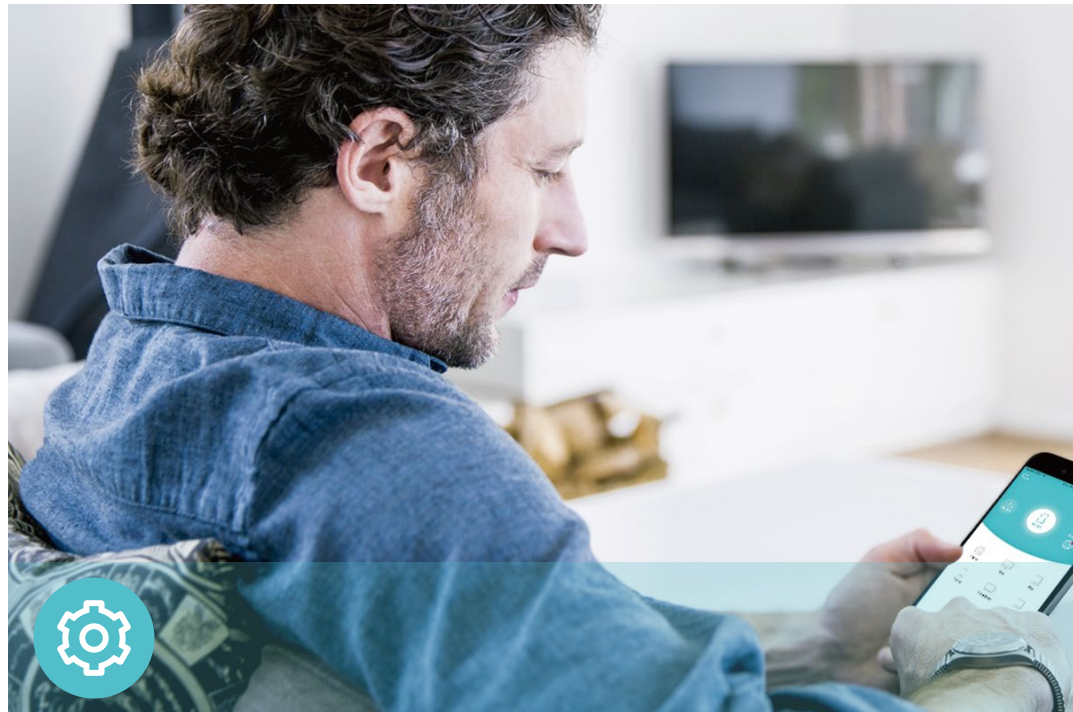
Game Console



Smart TV



# Features



## Ease of Use

- Intuitive Web UI – Ensures quick and simple installation without hassle.
- Fast Encryption – One-touch WPA/WPA2 wireless security encryption with the WPS button
- Easy On/Off – LED On/Off button allows users to turn LED on or off
- Hassle-free Management with Tether App – Network management is made easy with the TP-Link Tether App, available on any Android or iOS device
- Online Upgrade – Keeps you informed of the latest firmware and allows online updating on the web UI



## Speed

- Ultimate Wireless Speed – Combined wireless speeds of up to 450Mbps (over 2.4GHz) and 1300Mbps (over 5GHz)
- Support 802.11 ac – Provides a data transfer rate 3 times faster than 802.11n for each stream



## Reliability

- Simultaneous Dual Band – Separate Wi-Fi bands enable more devices to connect to your network without a drop in performance
- Reliable Connection – Three adjustable external antennas for optimal Wi-Fi coverage and reliable wireless connections

# Specifications

## Hardware

- Ethernet Port: 1 10/100/1000Mbps RJ45 Port
- Button: WPS Button, Reset Button, LED On/Off Button, Power On/Off Button
- Antenna: 3 External Antennas
- Power Consumption: <16W
- Dimensions (W × D × H):  
3.4×1.1×6.4 in. (86.4×29×163 mm)



For more information, please visit

<https://www.tp-link.com/en/products/details/RE450.html>

or scan the QR code left

## Wireless

- Wireless Standards: IEEE 802.11a/n/ac 5GHz, IEEE 802.11b/g/n 2.4GHz
- Frequency: 2.4GHz and 5GHz
- Signal Rate: 450Mbps at 2.4GHz, 1300Mbps at 5GHz
- Transmit Power:  
CE: <20dBm(2.4GHz); <23dBm(5GHz band1&band2); <30dBm(5GHz band3)  
FCC: <30dBm(2.4GHz); <30dBm(5GHz)
- Reception Sensitivity:  
5GHz:  
11a 6MHz:-96dBm;11ac VHT80 MCS9:-64dBm  
2.4GHz:  
11a 6MHz:-97dBm;11n HT40 MCS7:-73dBm
- Wireless Function: Enable/Disable Wireless Radio, Wireless Statistics
- Wireless Security: 64/128-bit WEP, WPA/WPA2, WPA/WPA2-PSK encryptions

## Others

- Certification  
CE, RoHS
- System Requirements  
Microsoft Windows 98SE, NT, 2000, XP, Vista™ or Windows 7, 8, 8.1, 10, MAC OS, NetWare, UNIX or Linux  
Internet Explorer 11, Firefox 12.0, Chrome 20.0, Safari 4.0, or other Java-enabled browser
- Package Contents  
Wi-Fi Range Extender RE450  
Quick Installation Guide

This device complies with part 15 of the FCC Rules. Operation is subject to the following two conditions: (1) This device may not cause harmful interference, and (2) this device must accept any interference received, including interference that may cause undesired operation.

Specifications are subject to change without notice. All the brands and product names are trademarks or registered trademarks of their respective holders.

\*Maximum wireless signal rates are the physical rates derived from IEEE Standard 802.11 specifications. Actual wireless data throughput and wireless coverage are not guaranteed and will vary as a result of network conditions, client limitations, and environmental factors, including building materials, obstacles, volume and density of traffic, and client location.

†The product may not be compatible with routers or gateways with firmware that has been altered, is based on open source programs, or is non-standard or outdated.

‡Uninterrupted Streaming is designed for devices that support the 802.11k/v standard.

§Use of MU-MIMO requires clients to also support MU-MIMO.

©2020 TP-Link

[www.tp-link.com](http://www.tp-link.com)

TP-Link AC1750 Wi-Fi Range Extender RE450