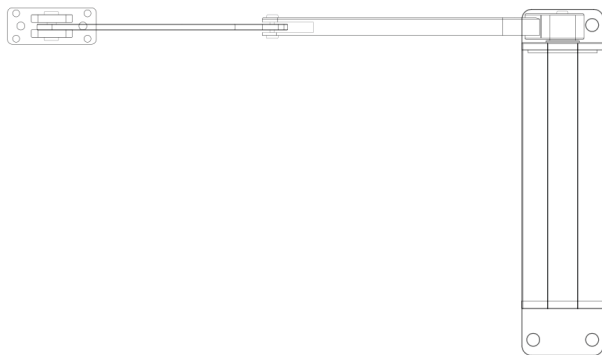


Smart Door opener

Installation and User Manual



1. Warning

Installation warning

- Please read the instruction manual and precautions carefully before installation, and then carry out assembly, installation and commissioning operations to avoid unnecessary losses.
- All installation, commissioning and maintenance work must be carried out with the main power supply cut off.
- The power supply of the controller must have safety grounding measures.
- Please be careful to touch this product during installation, avoid bumping, crushing, falling to the ground or contact with any liquid. This product should be kept away from high temperature and open flame.
- The controller of this product is controlled by 24V low voltage, please do not connect directly to 220V high voltage.

Use Warning

- This product is not suitable for use by children, disabled persons or persons without basic common sense and experience, unless accompanied by professional training and responsible for its safety.
- When debugging the equipment, be sure to keep children or the elderly away from the site, so as to avoid accidental injuries due to large force due to debugging errors.

Maintenance Warning

- When the equipment fails, please cut off the power supply of the equipment and then disassemble it to check the problem.
When checking the support arm, please pay attention to placing the no-passing sign to
- prevent the folding arm from squeezing the maintenance personnel's hands and avoid accidents.

2. About the product

2.1 Product Introduction

Automatic door opener is designed for automatic control of single or double iron doors, villa doors, glass doors, electric small doors, pedestrian passage swing doors, which can be controlled automatically by access control equipment, face recognition equipment, cell phones, license plate recognition equipment for switching. Drive motor adopts new DC brushless motor drive, sufficient and smooth strength, the controller adopts military motherboard process, more humane operation experience.

2.2 Product Features

Compact: especially suitable for pedestrian access doors, and can also be installed on small door posts with a width of 5 cm

Safety: non-reversible motor, reversing arm, built-in close stop (when using full crank arm)

Practical: the crank arm is suitable for installation in various special conditions, such as small door posts or small installation spaces

Fast: no waiting, open or close as fast as 3 seconds (under ideal conditions, open 90° with normal crank arm)

Soft start and soft stop function to protect the motor gear to the greatest extent and prolong the service life of the product

2.3 Electrical parameters

Scope of application	≤1600mm width, 250Kg or less weight of various swing doors
Power input voltage	DC24V-150W
Motor power	45W
Door lock control voltage output	DC12V
Light control voltage output	DC24V
Remote Control Distance	>15m
Motor speed ratio	1:200
Operating ambient temperature	-20~+45°C
Weight	8.2KG
Package Size	390x300x100mm

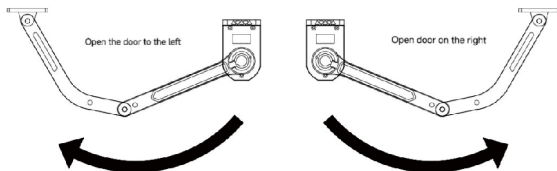
3. Product installation

3.1 Tool and material preparation

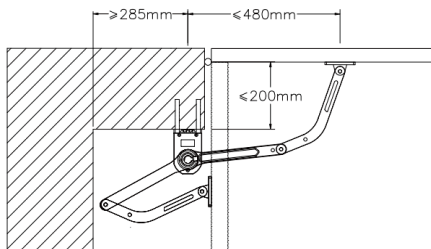
Electric hammer (concrete column structure), electric drill (iron pipe and other structures), Phillips screwdriver, wire stripper, wrap cloth, wrench.

Power cable RVV2×1.5mm², electric lock cable RVV2×1.5mm², access control cable RVV4×1.0mm²/ Infrared anti-clamp RVV4×1.0mm² or HSYV8×0.5mm²

3.2 Determine the direction of opening the door



3.3 Door body structure



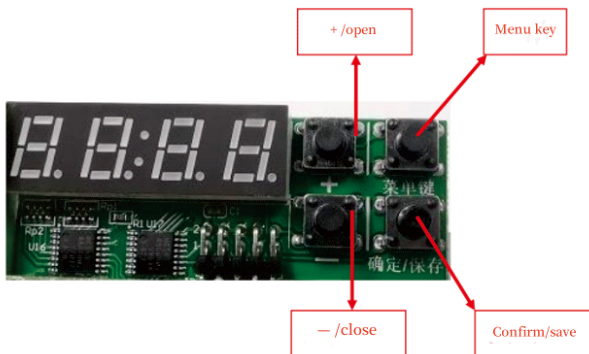
3. 4 Installing stickers

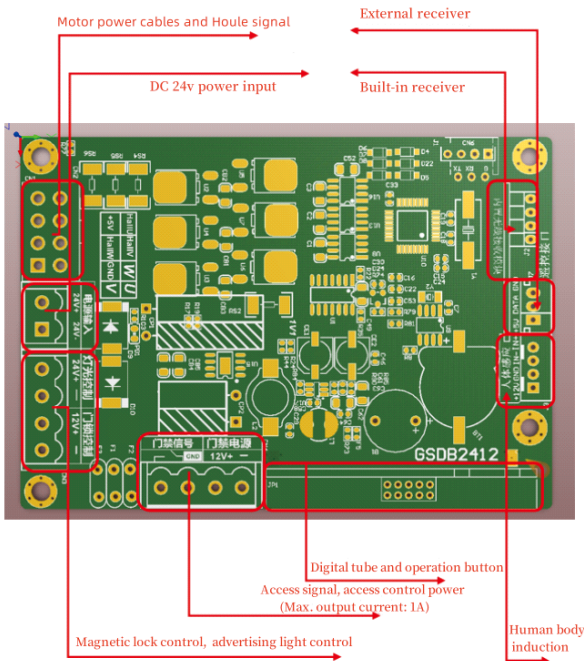
According to the door structure roughly choose the installation location, whether you need to pre-deposit threading holes, and then place the installation stickers, metal structure, please first place the adapter base plate, fixed with dovetail wire, and then fix the motor can be.



Note: When installed, the door L-type mounting seat, crank, door opener spindle need to be on the same level, otherwise it will cause the crank arm up and down plane force and stuck block.

4. Equipment wiring introduction





5. Equipment commissioning

5.1 Opening angle

F1: The larger the value, the larger the opening angle Setting range 10-270 units degree

5.2 Remote Control Pairing

FA: The main board pressed to FA, press 'OK' display appears 'PPPP' long press the remote control 'stop' button, a drop indicates that the pairing on.

5.3 Open the door Directions

F2: Value range: 0-1, default: 0. 0 for left door, 1 for right door.

5.4 Restore factory settings

FB: motherboard press to FB, press 'OK' display appears LdEF long press 'OK' key, hear the buzzer sound 5, initialization success

Menu			Descriptions	Range	Unit
F1	Angle setting		The larger the value, the larger the opening angle	10-270	degree
F2	Opening direction		0:Left door;1:Right door	0 or 1	
F3	Opening speed		The higher the value, the faster the door opening speed	2-100	50RPM
F4	Closing speed		The higher the value, the faster the closing speed	2-100	50RPM
F5	Door closing delay		Delayed closing time after the door is opened in place	0-60	S
F6	Rebound strength when blocked		The larger the value, the greater the resistance needed to rebound	6-70	0.1Ap
F7	Bounce back sensitivity when blocked		The larger the value, the longer it takes to bounce back	1-30	
F8	Basic Setup Group				
FB	F8:1	Light control mode	This machine only supports time control mode 1:Time control mode	1	
	F8:2	Lights on moment	Step adjustment for 15 minutes	00:00-23:45	
	F8:3	Lights out moment	Step adjustment for 15 minutes	00:00-23:45	
	F8:5	Internal and external remote control options	0:external;1:internal	0 or 1	
	F8:6	Door opening delay	After the door opening signal is triggered, the magnetic lock will be released and the door opening action will be started after delaying this time.	0-60	0.1S
	F8:8	Finding the origin current	The larger the value, the stronger the force to find the origin and squeeze the goal post	4-80	
	F8:9	Finding the origin speed	The greater the value, the greater the speed of finding the origin	2-10	50RPM
	FA	Wireless remote control pairing	Long press the remote control 'stop' button drop a successful pairing	PPPP	
FC	Initialization parameters		Press and hold the "OK" button, and hear the buzzer sound 5 times, indicating that the parameters are initialized. Note: F2 opening direction, FE:E motor type, these two parameters will not be initialized but keep the user set value.	LdEF	
FE	Automatic operation		1: Periodic closing and opening of the door, for a long time to test the door	0 or 1	
FE	Real-time clock calibration group				
	FE:1	Clock second calibration	Clock second calibration setting value	0-59	S
	FE:2	Clock branch alignment	Clock calibration setting value	0-59	M
	FE:3	Clock time calibration	Clock time calibration setting value	0-23	H
	FE:4	Manual push door setting opening position	In the case of power on to find the origin and close the door in place, enter this menu after the magnetic lock will power off and release, then you can manually push the door to meet the requirements of the position after pressing the "OK" button is to set the current position as the position of the door in place.	-	
	FE:5	Clear remote control data	Press and hold the "OK" button, hear the buzzer sound 5 times, clear all the saved remote control code data.		
	FE:E	Motor type	Motor model selection, generally no adjustment required	2626	

6. Fault code

Error code	Accident details	Cause Analysis	Treatment measures
OE01	Internal error	1. Internal error	Return to controller manufacturers
OE02	Following error exceeded	1. The actual model of the motor does not match the model of the controller motor	Select the matching motor model or replace the motor through the menu FFE
		2. The motor output shaft is disengaged from the reducer	Check the mechanical structure
OE04	Motor hall signal failure	1. The Hall wire of the motor is not connected or one of the wires is disconnected	Checking Hall wiring conditions
		2. Motor Hall plate failure	Back to Motor Factory Repair
OE08	Motor Overload	1. The motor load is too heavy	Check if the machine is stuck
		2. The output capacity of the motor is too small	Replace the motor
		3. The actual model of the motor does not match the model of the controller motor	Select the matching motor model or replace the motor through the menu FFE
OE10	Controller temperature is too high	1. There are heat sources around the controller, such as hot air fans, etc.	Avoid heat sources
		2. The load continues to be too heavy, and the output power of the motor is too large	Check the mechanical structure or replace the motor
		3. Controller internal temperature sensor failure	Back to Controller Factory Repair
OE20	High supply voltage	1. Switching power supply abnormal, the output voltage is too high	Replacement of switching power supply
OE40	Low supply voltage	1. Switching power supply abnormal, the output voltage is too low	Replace the switching power supply
		2. Switching power supply power is too small	Replace the larger switching power supply, it is recommended that the switching power supply output current can be greater than 7A
		3. Switching power supply to the controller line is too long, resulting in part of the voltage drop in the power line	Reduced line length Use thicker core wire Increase the output voltage of switching power supply
		4. Poor contact between power cord and terminal	Reengage well

OE80	Control board short circuit	1. The motor wire is broken and shorted with the casing and other wires	Dealing with broken skin short circuits
		2. The internal short circuit of the motor burnt	Return to motor manufacturer for maintenance
		3. Controller power tube burned out	Return to controller manufacturer for maintenance

7 Assembly list

Serial Number	Name		Quantity	Remark
1		Door opener body	1	individual
2		Door opener crank arm	1	Set
3		M8*80 expansion wire	4	individual
4		M8*18 hexagon socket screws	4	individual
5	Conch Silk Package	Hexagonal wrench	1	individual
6		Ø4.8*25 cross dovetail wire	25	individual
7		One-way screwdriver	1	Put
8		1:1 mounting stickers	1	Zhang
9		Instruction manual	1	Portions
10		Test Report	1	Portions
11		Warranty card + Certificate of Conformity	1	Zhang
12		Remote Control	2	individual
13		24V DC power supply	1	individual
14		Metal face mount adapter plate	2	individual
15		Warning labels	2	Zhang
16		25 hole plug	1	individual