

UniFinger Engine SDK Installation Guide

Version 3.0.0

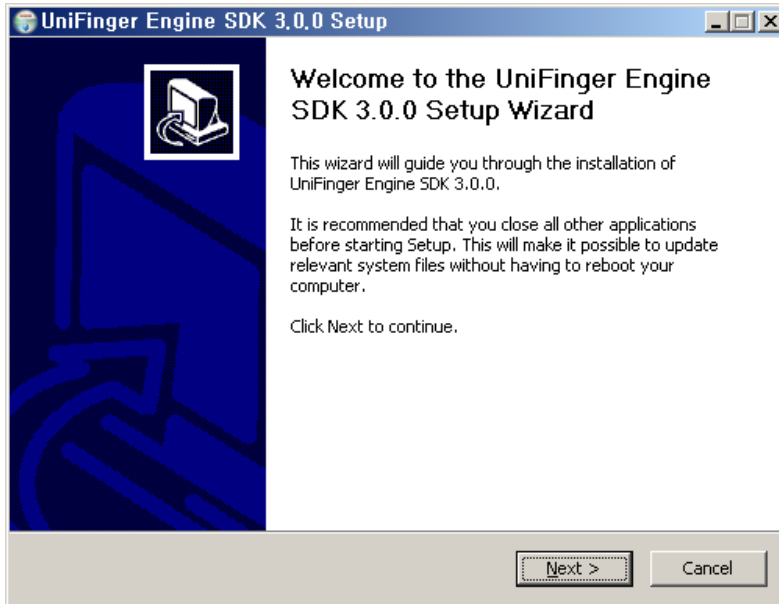


Table of Contents

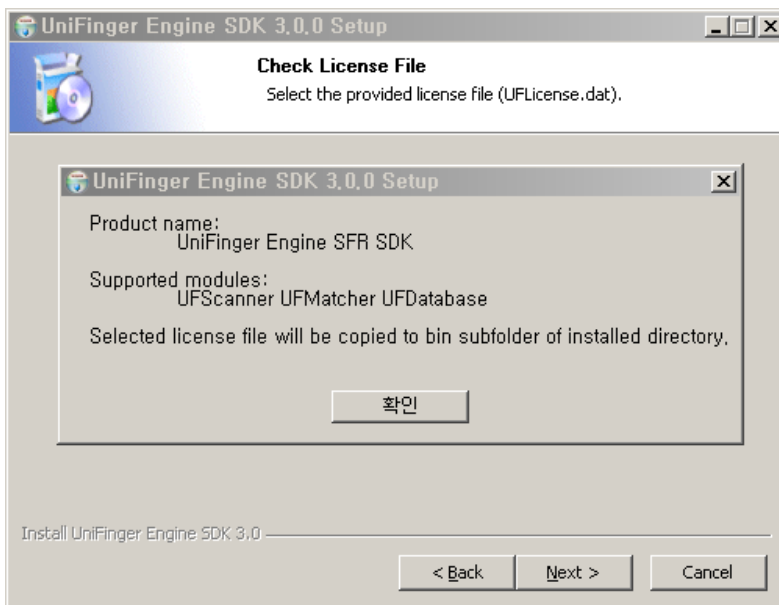
Table of Contents	1
1. Install UniFinger Engine SDK	2
2. Device driver installation	5
2.1. SFR300-S(Ver.2).....	5
2.2. SFR300-S	9
2.3. SFR200 (IZZIX FD1000).....	10
3. Running Samples.....	11
4. Tutorials for Starting Development.....	11

1. Install UniFinger Engine SDK

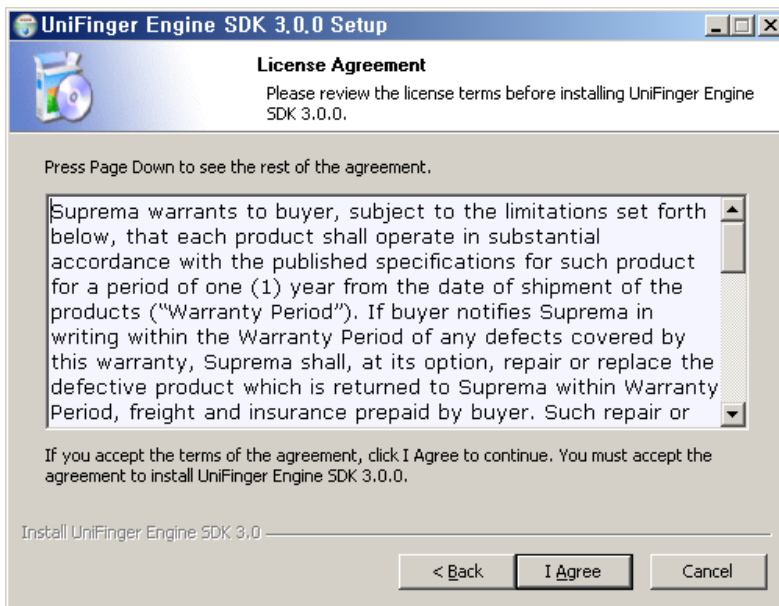
1. Run an UniFinger Engine SDK install program such as “UFE30[3.x.x]_Install.exe”.



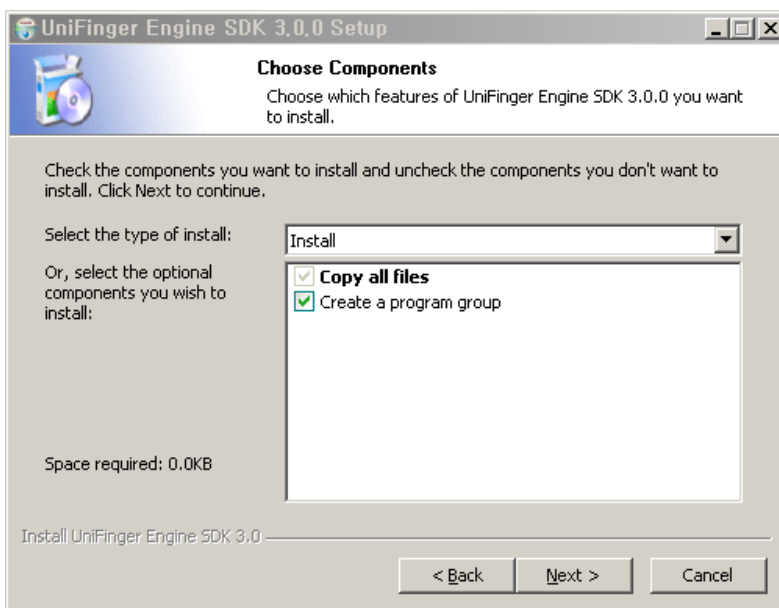
2. Select the provided license file, and brief information about the license will be shown. Selected license file will be copied to bin subfolder of installed directory.



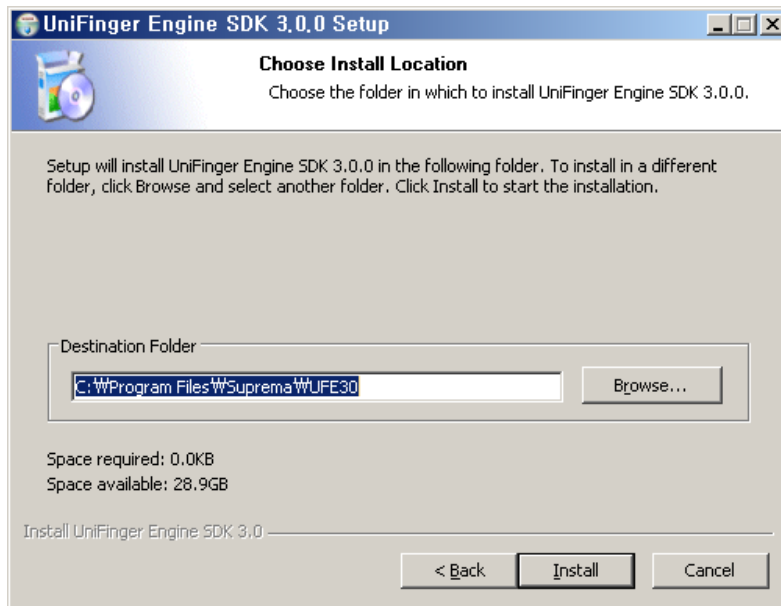
3. Agree with the license.



4. Choose installing components.



5. Choose install location. After pushing Install button UniFinger Engine SDK files will be installed to the selected install location.



6. Installed SDK can be found in Start menu.



2. Device driver installation

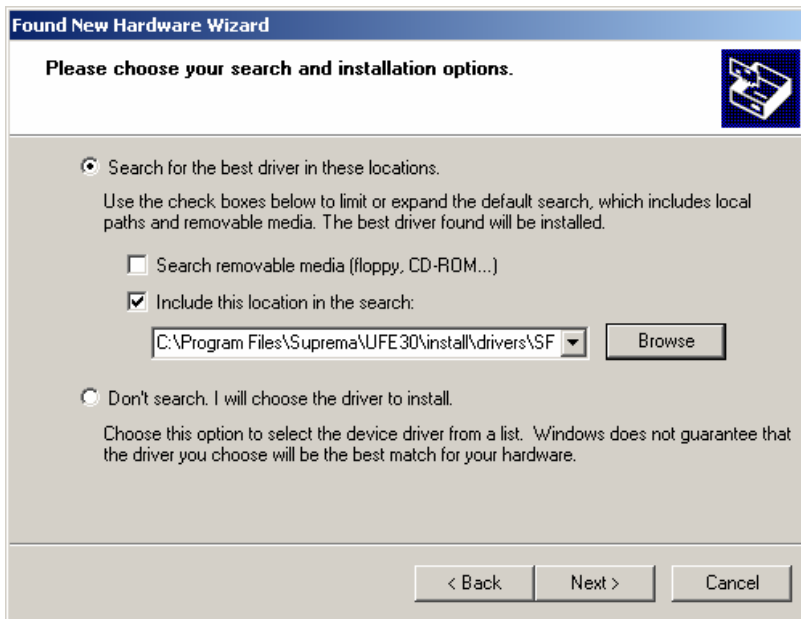
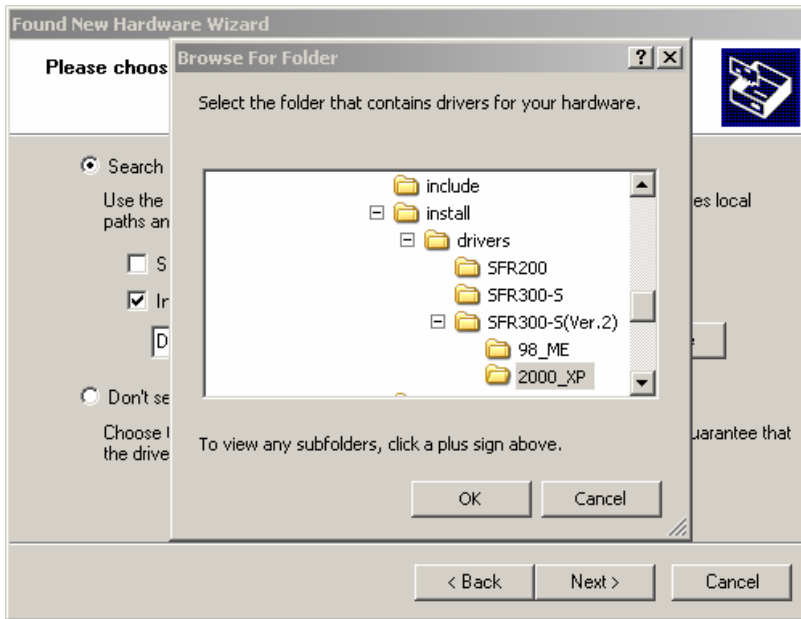
2.1. SFR300-S(Ver.2)

1. Connect SFR300-S(Ver.2) to the PC.
2. Windows will launch new hardware search wizard. Select No for the connecting Windows Update if questioned.
3. Select install from a list or specific location (Advanced).

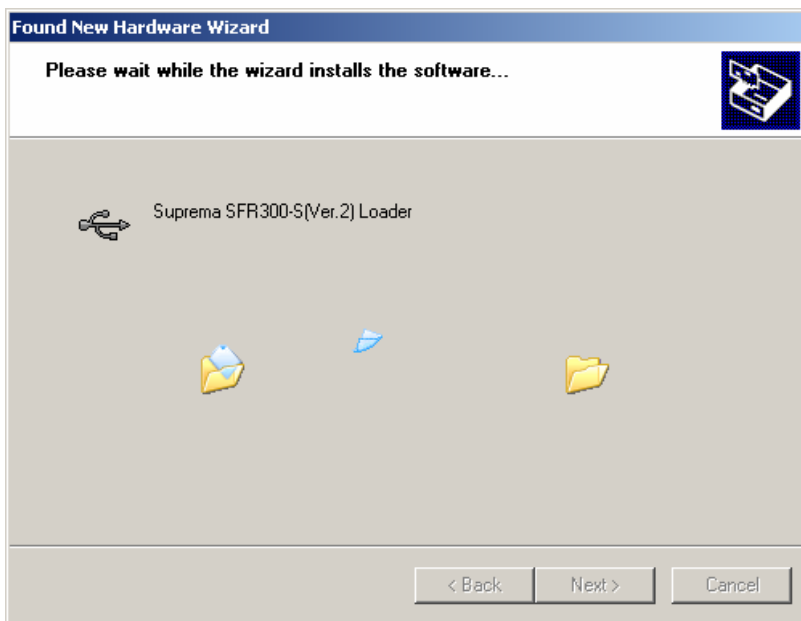
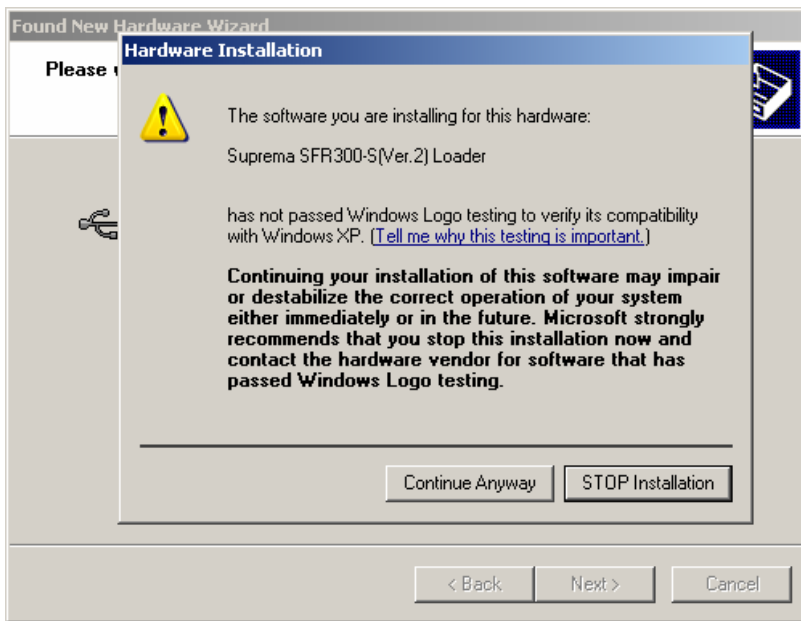


4. In the search and installation option, check "Include this location in the search" and press "Browse". Then select the directory containing SFR300-S(Ver.2) driver.

If Windows version is 98 or ME, select install\drivers\ SFR300-S(Ver.2)\98_ME.
If Windows version is 2000 or XP or higher, select install\drivers\ SFR300-S(Ver.2)\2000_XP.

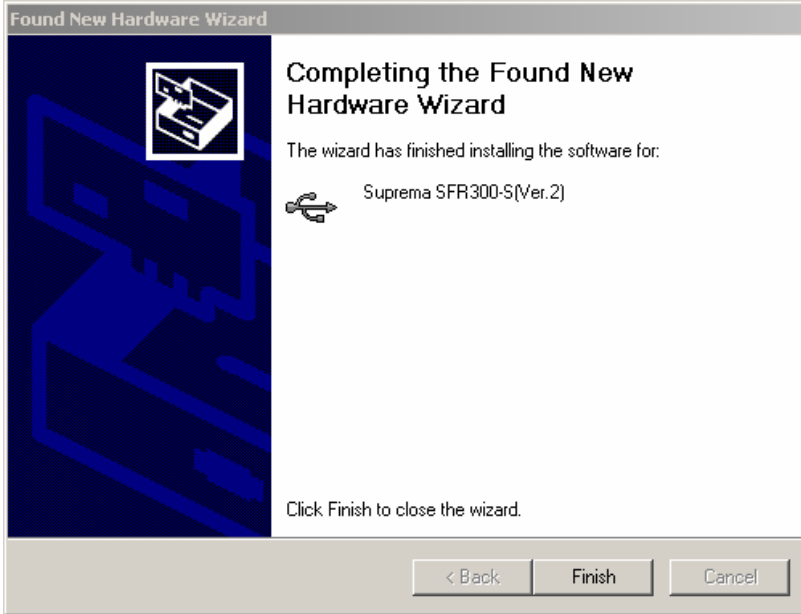


5. After selecting Next, the driver for Suprema SFR300-S(Ver.2) will be installed. If warning dialog of Windows Logo testing is popped up, press "Continue Anyway".



6. After finishing driver installation for Suprema SFR300-S(Ver.2) Loader, another new hardware search wizard will be popped.

7. Repeat step 2-5, and the driver for Suprema SFR300-S(Ver.2) will be installed.

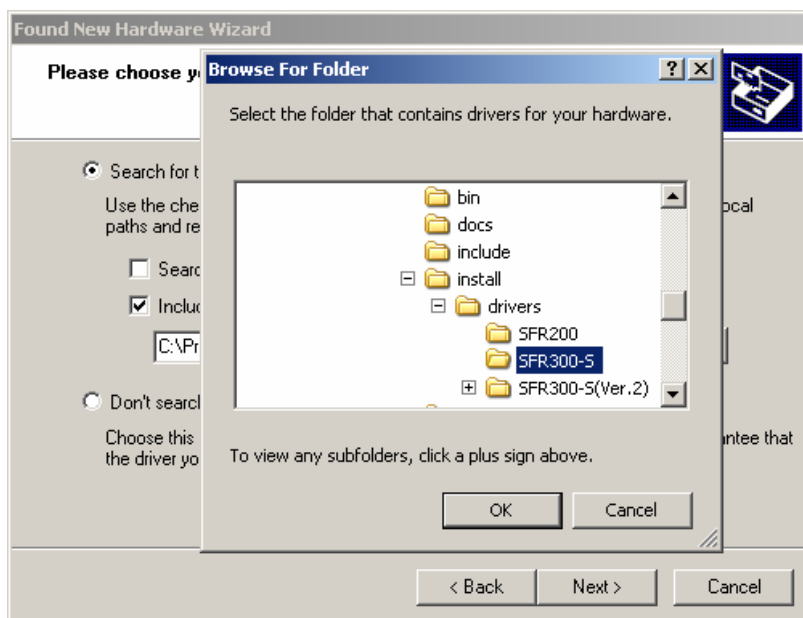


2.2. SFR300-S

1. Connect SFR300-S to the PC.

2. Do step 2-3 of 2.1. SFR300-S(Ver.2).

3. In the search and installation option, check "Include this location in the search" and press "Browse". Select the directory containing SFR300-S driver such as "install\drivers\ SFR300-S".



4. If system shows pop-up dialogs for missing files, select the directory containing SFR300-S driver such as "install\drivers\ SFR300-S".

5. After selecting Next, the driver for Suprema SFR300-S will be installed.

2.3. SFR200 (IZZIX FD1000)

1. Connect SFR200 (IZZIX FD1000) to the PC.
2. Do step 2-3 of 2.1. SFR300-S(Ver.2).
3. In the search and installation option, check "Include this location in the search" and press "Browse". Select the directory containing SFR200 driver such as "install\drivers\ SFR200".
4. After selecting Next, the driver for Suprema SFR200 will be installed.

3. Running Samples

1. After SDK and device installation are completed, you can run precompiled sample applications in the following locations.

<installed folder>\bin\UFE30_DemoVC60.exe	- Visual C++ 6.0 Demo
<installed folder>\bin\UFE30_DemoCS.exe	- C# Demo
<installed folder>\bin\UFE30_DemoVBNET.exe	- Visual Basic .NET Demo

* .NET samples require "Microsoft .NET Framework 2.0"

2. UniFinger Engine SDK Reference Manual is in the following location.

<installed folder>\doc\UFE30.chm	- Windows Help File
<installed folder>\doc\UFE30.pdf	- Adobe PDF File

Detailed descriptions about sample application can be found in "Chapter 4. Sample" in the manual.

4. Tutorials for Starting Development

Please read tutorials before starting development. Tutorials can be found in "Chapter 3. Tutorial" in the manual. Tutorials are described using Visual C++, Visual Basic 6.0, Visual C#, Visual Basic .NET, and following topics are covered

- * Enroll fingerprints from scanner
- * Verification
- * Identification
- * Manage database
- * Enroll fingerprints from image