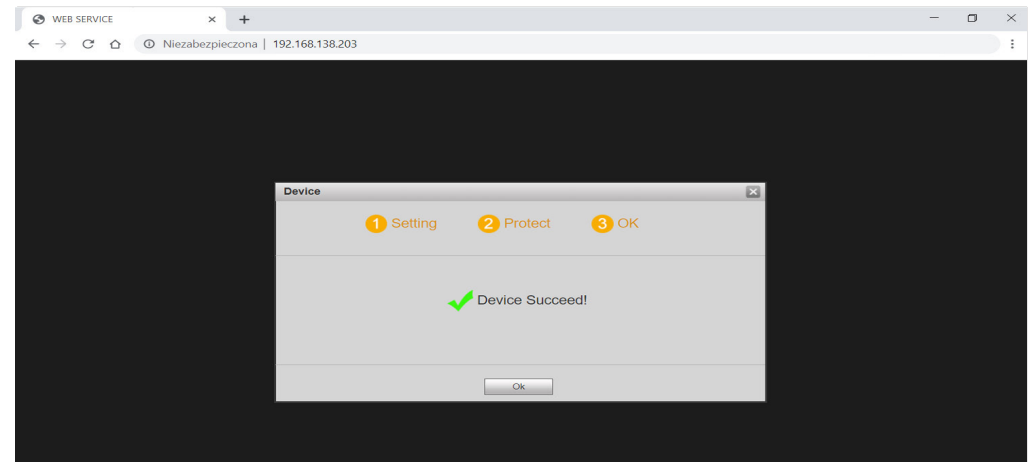
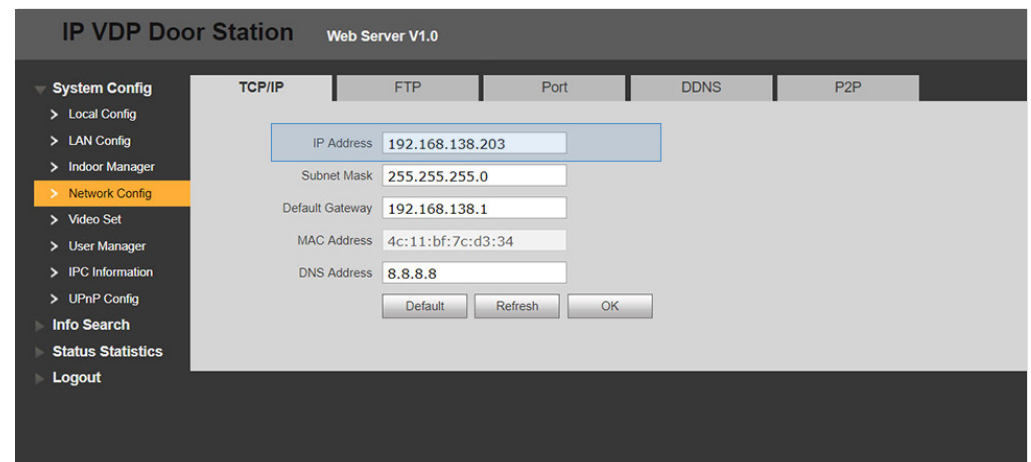


1 Login to the web interface of the Dahua video intercom.



The system displays the “Setting” interface if it is the first time you have logged in.
Follow the prompt to set a new password, and save it..



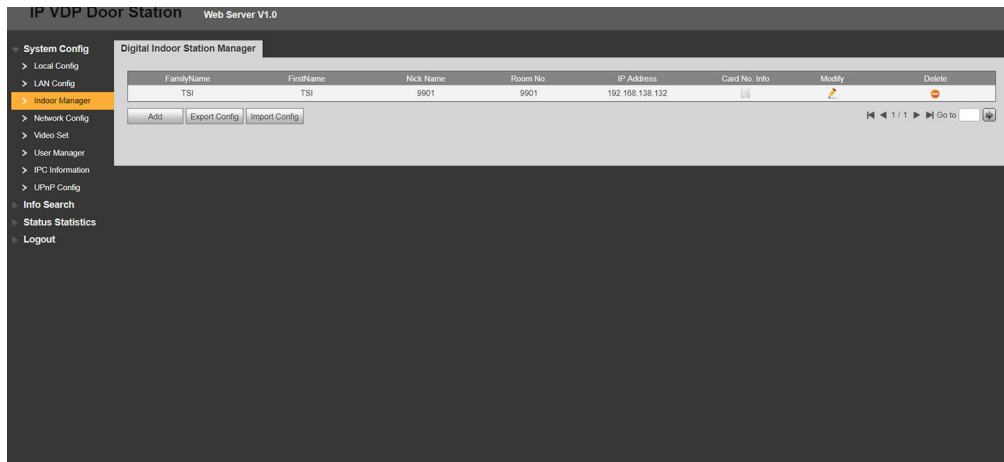
2 Configure the video intercom network settings.
The IP address must be in the same subnet as the INT-TSI keypad.

- 3** Set the VTO No. of the video intercom (the factory default setting is 6901).
If system has more than one INT-TSI keypad, tick the „Group Call” checkbox.

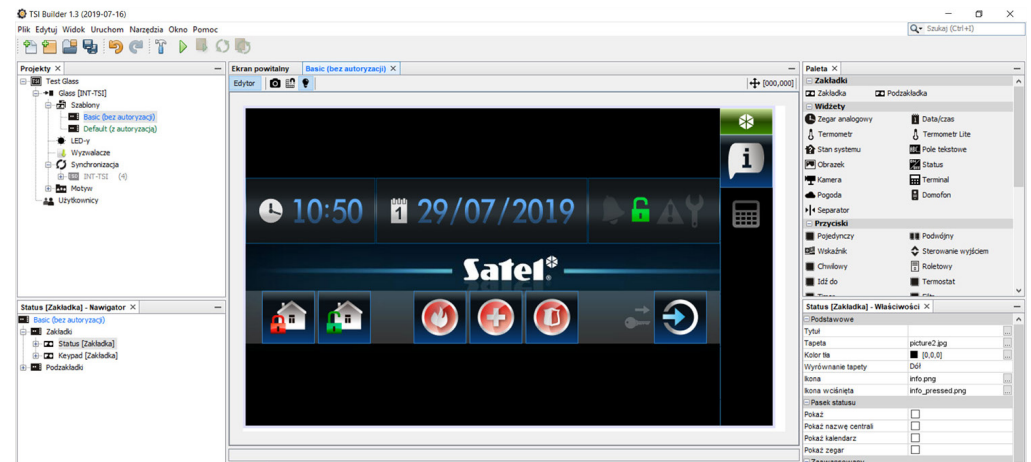
- 4** In the ‘Indoor Manager’ settings tab, add the connection between the video intercom and SATEL keypad.

- 5** Enter the name, VTO No. and IP address of the SATEL keypad.
(the factory default VTO No. of the INT-TSI keypad is 9901).

- 6** Set the number (VTO No.) of the video intercom
(Factory default is: 6901).



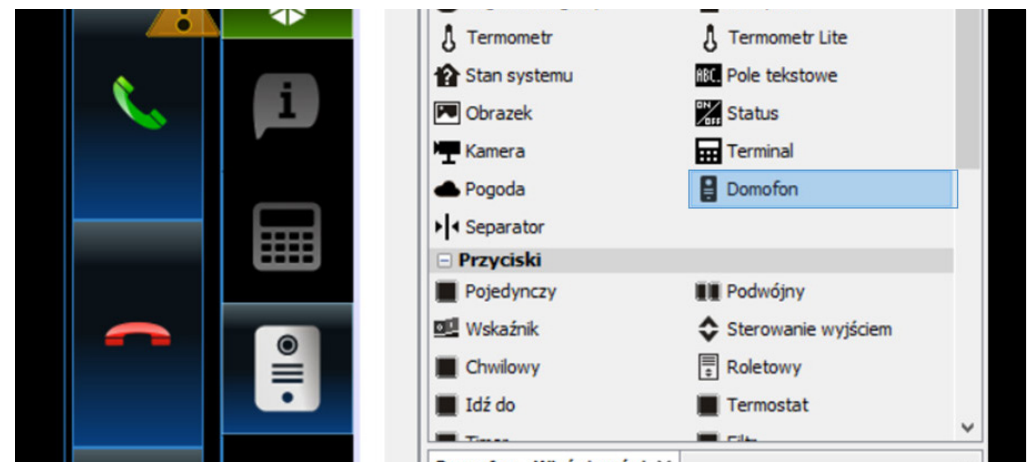
7 A correctly added INT-TSI keypad in the Dahua interface.



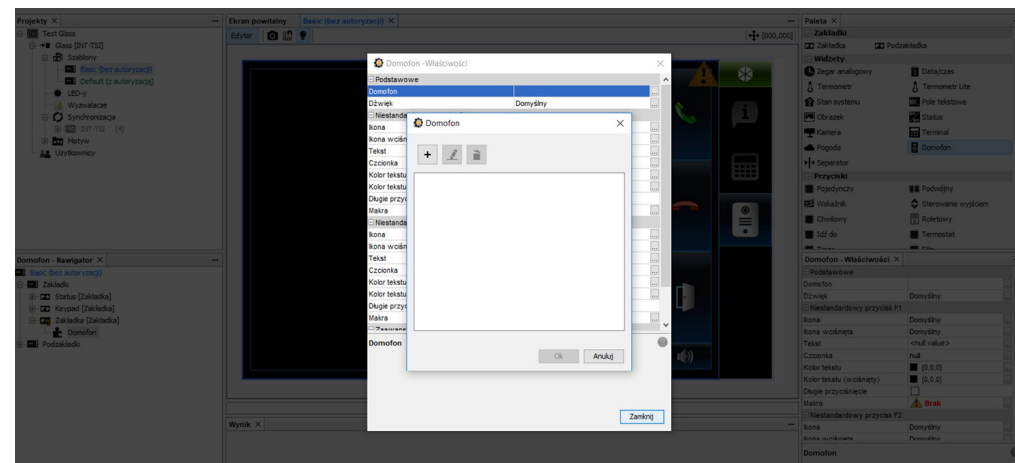
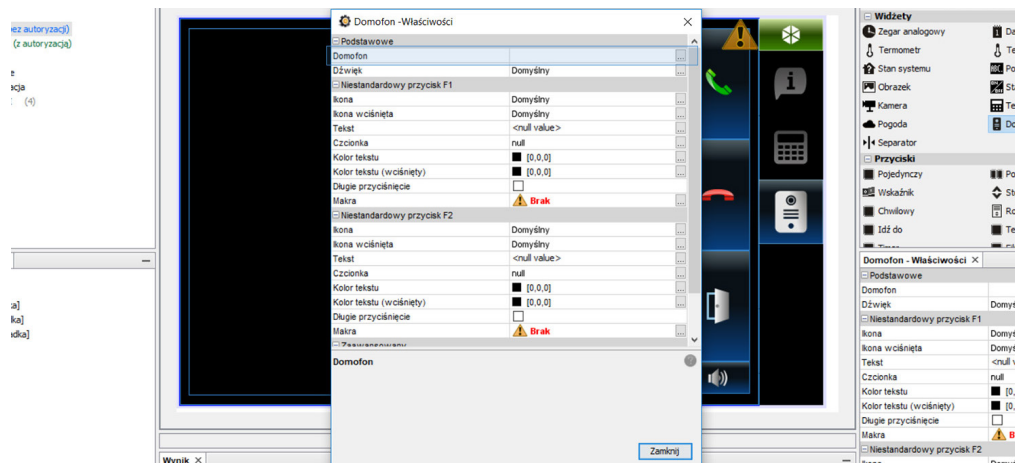
8 Run TSI Builder and open the project.



9 Add a new tab.



10 Add the "intercom" widget.

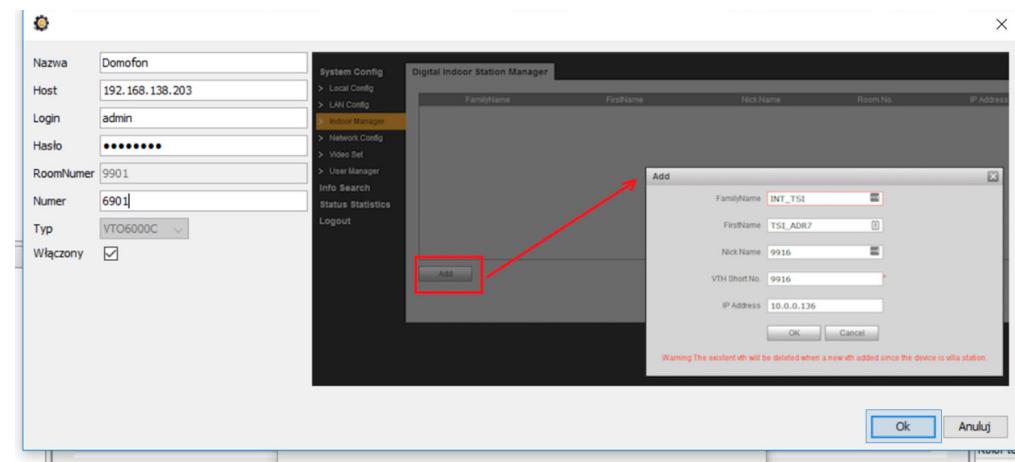
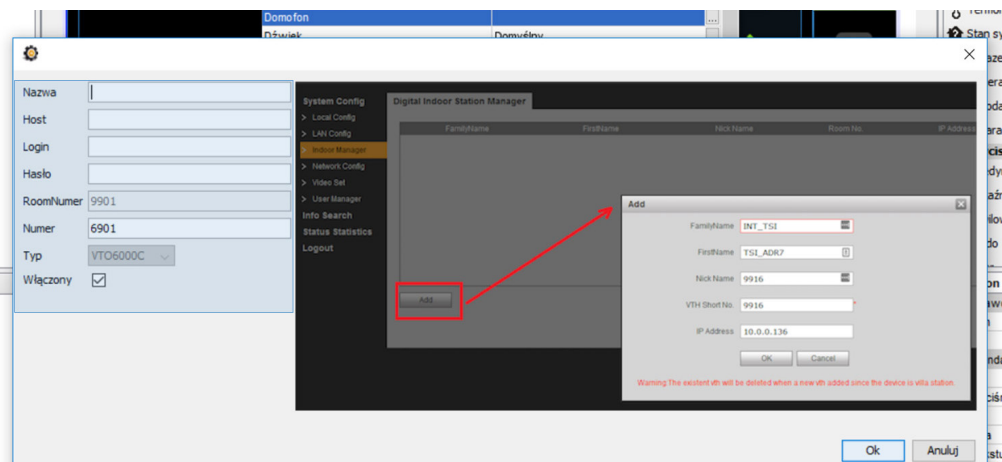


11

Open the “intercom” widget properties.

12

Click the add button (icon: “+”)

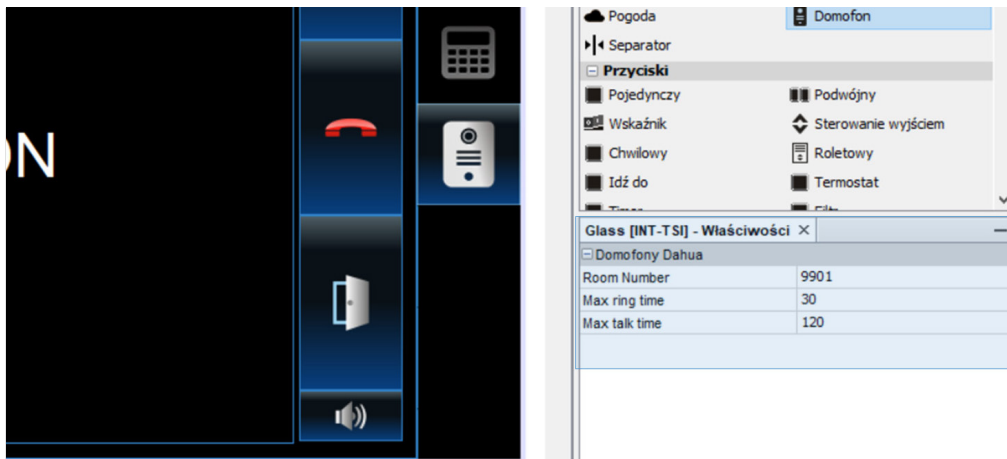


13

Enter the intercom settings: name, IP address, login, password (the factory default VTO No. is 6901)

14

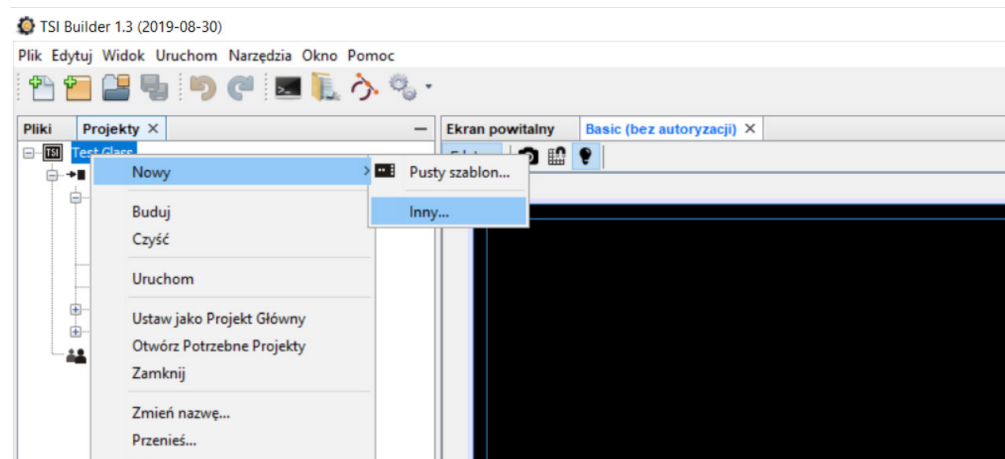
Confirm and save all changes in the Dahua web interface.



15

Check the assigned number to the INT-TSI keypad in the TSI Builder widget properties.

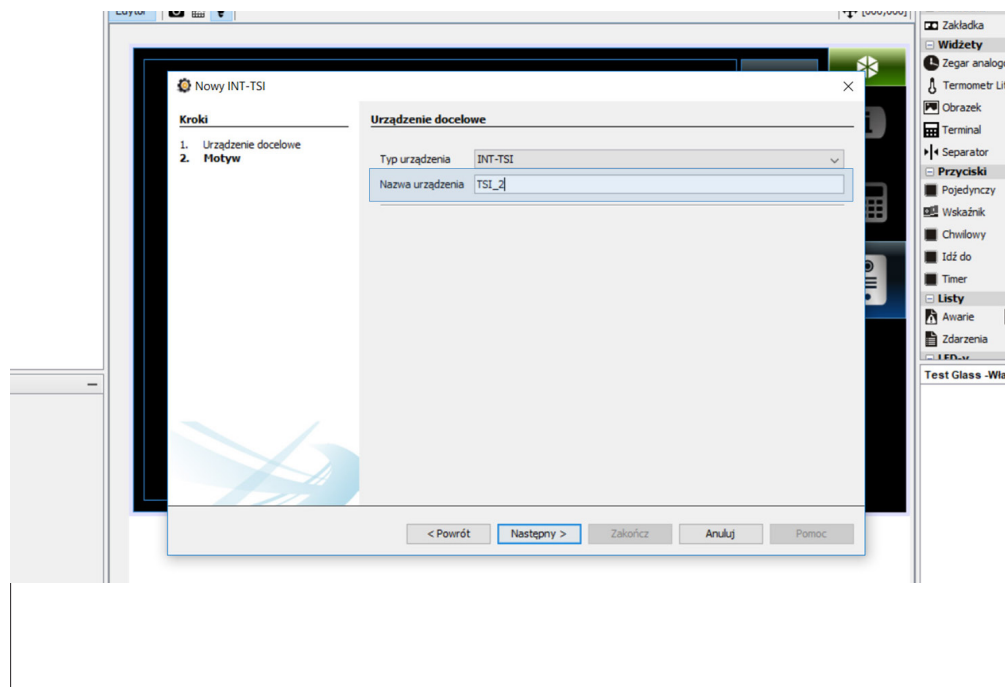
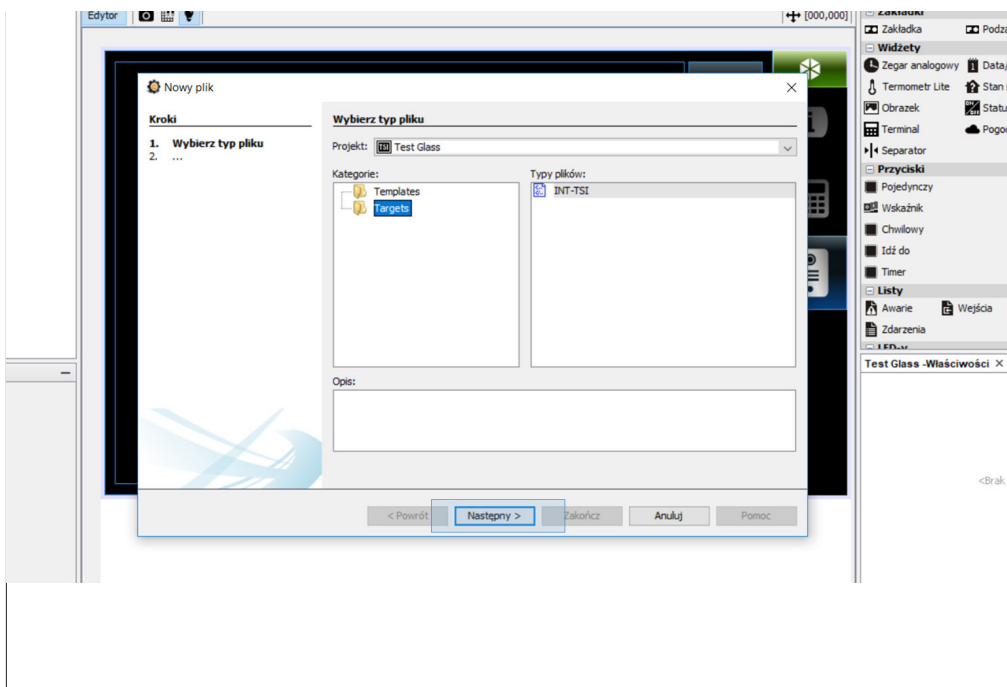
Caution! The room number is unique, if you have more than one INT-TSI keypad in the system then each keypad must have a different room number.

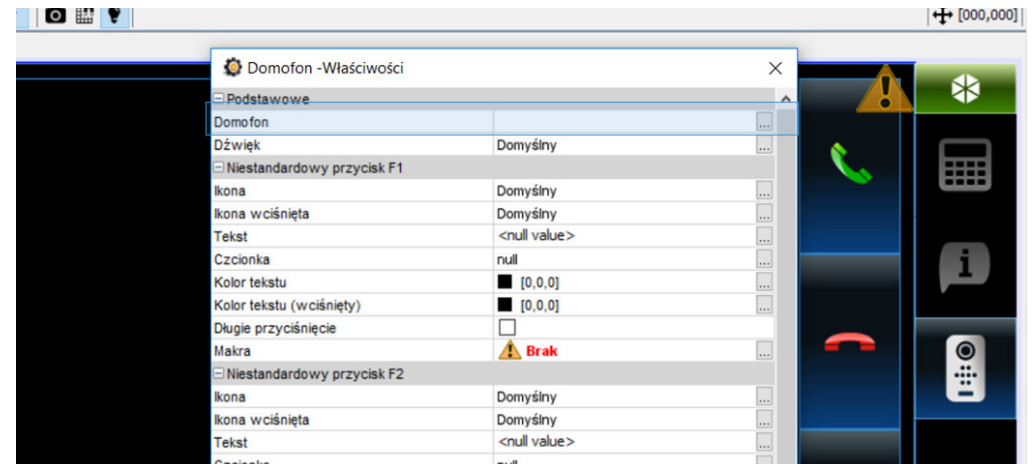
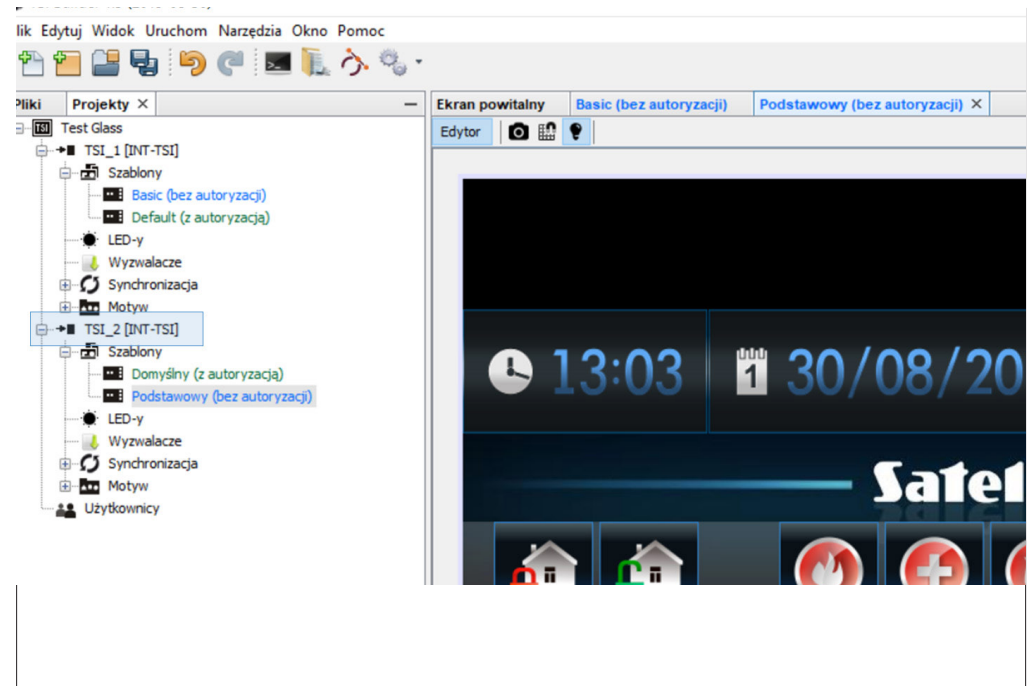
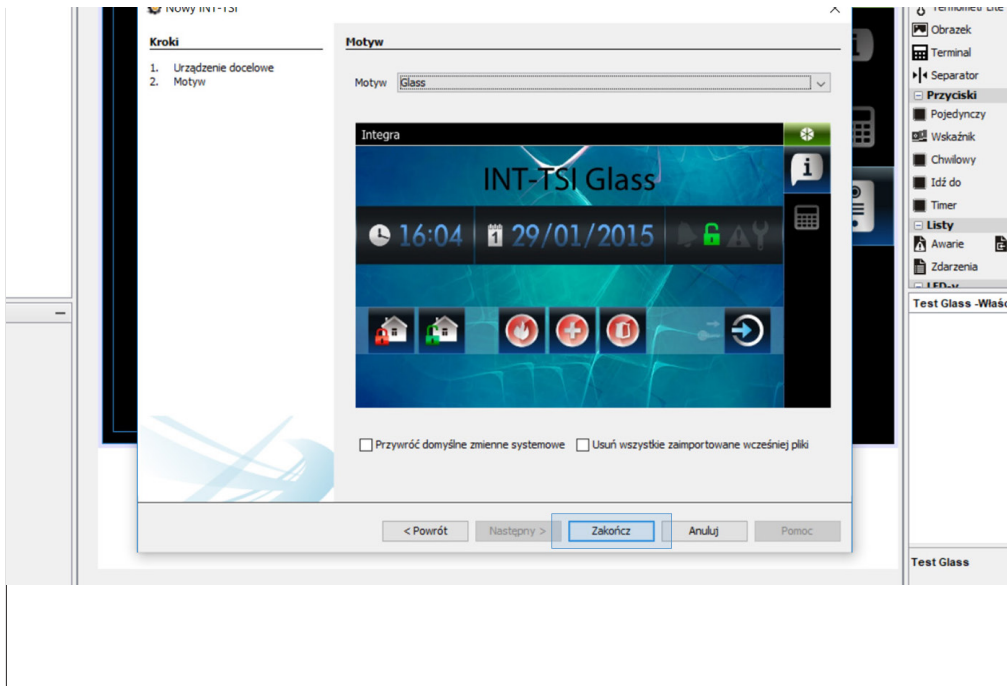


16

Add a second keypad to the project.

Caution! When configuring a second INT-TSI keypad with the same video intercom, do not edit the number of the second INT-TSI keypad. TSIBuilder will automatically assign an appropriate number to the other keypad.



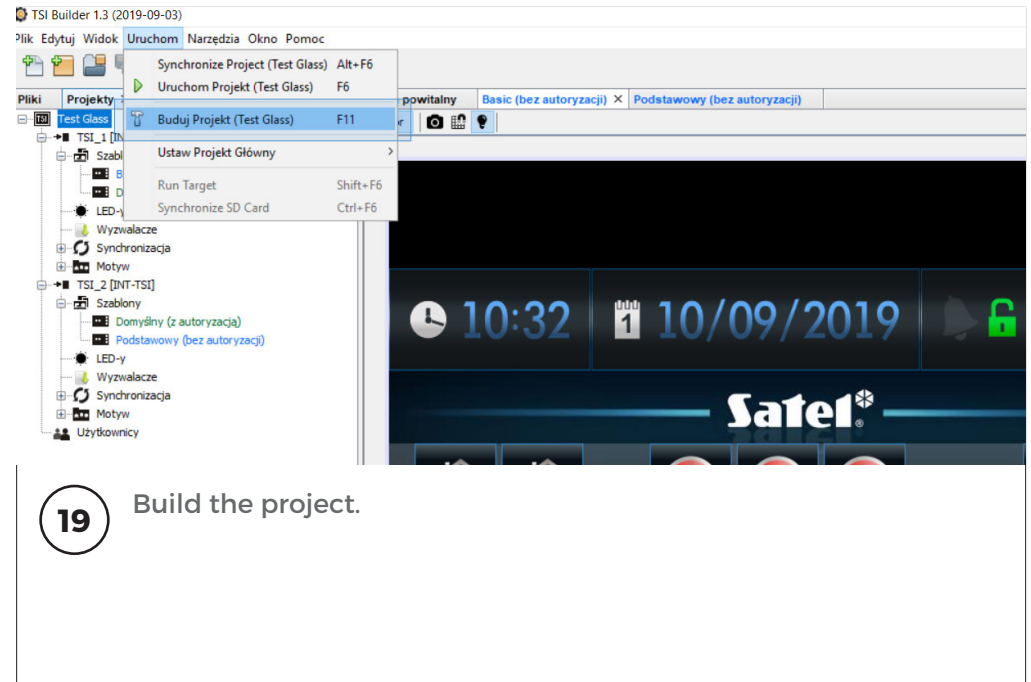
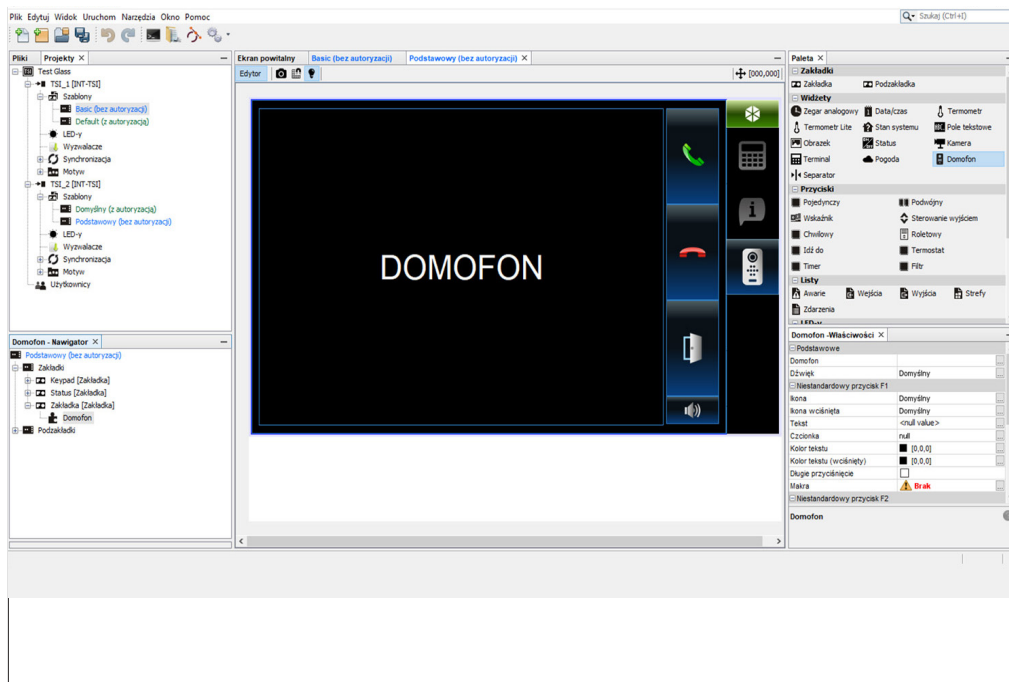
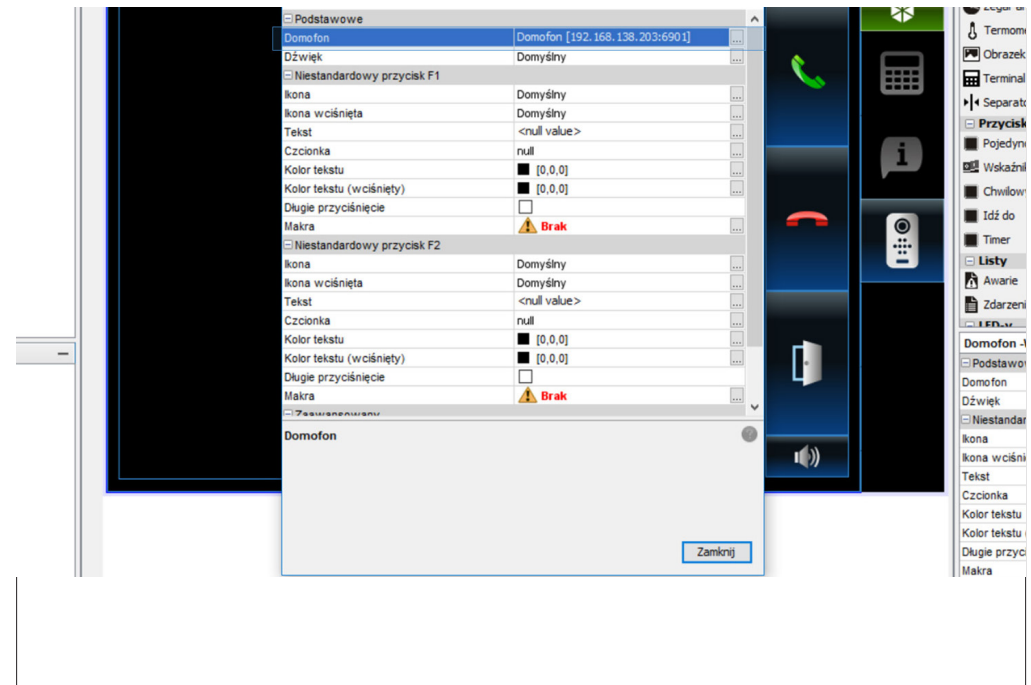
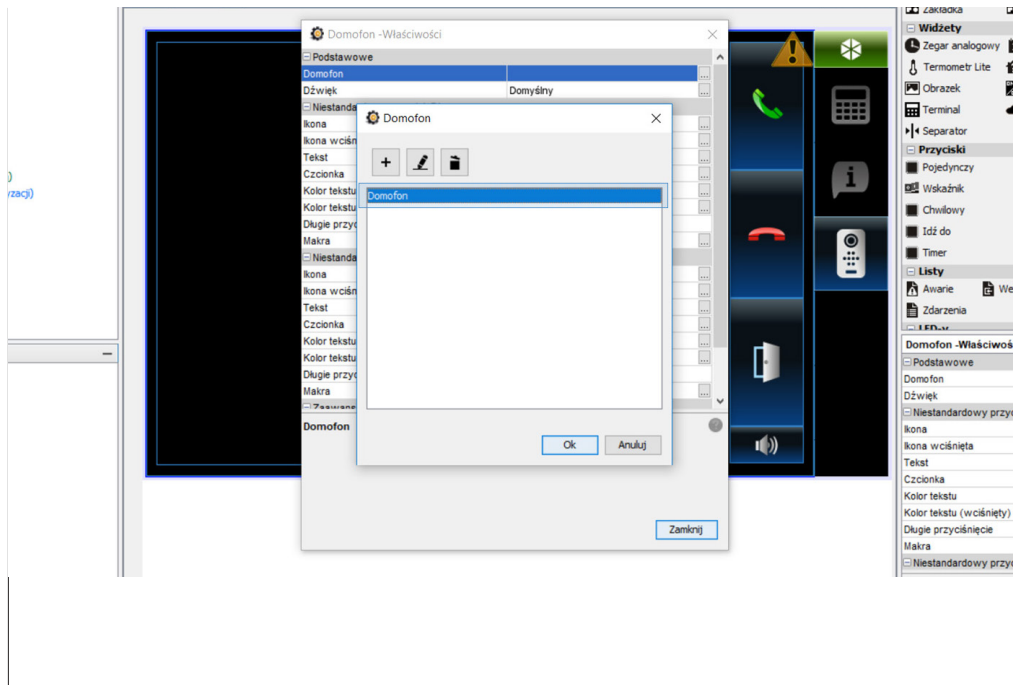


17

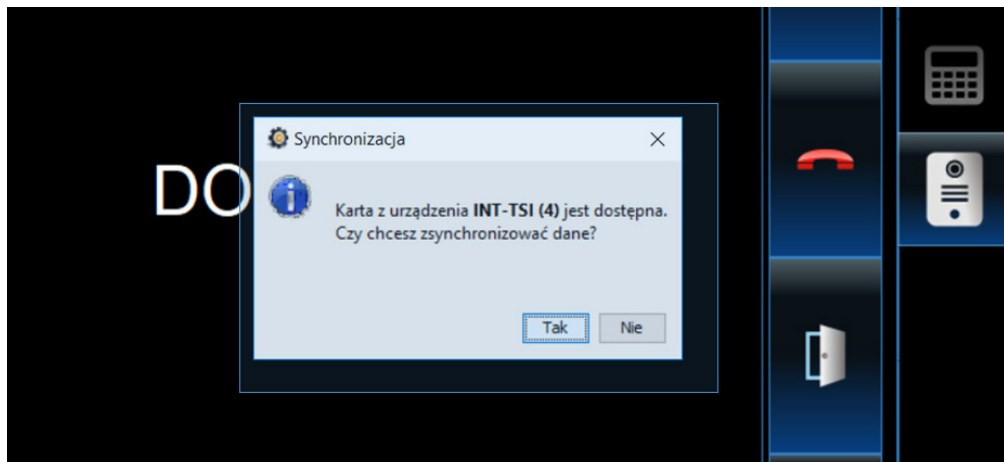
Add a new tab and add the „Intercom” widget.

18

Click the 'Add' button in the widget properties, choose the appropriate settings from the list.(some are pre-populated from the first keypad)

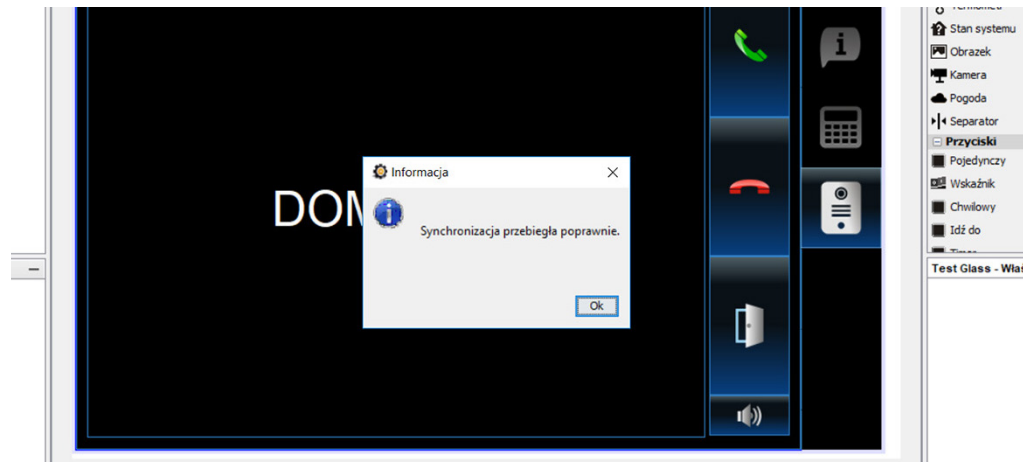


19 Build the project.



20

Synchronise project with the SD cards.



21

After correct synchronisation, insert the SD cards into the keypads.