

CA-10

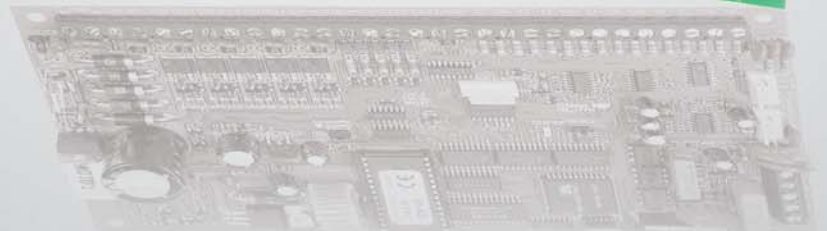
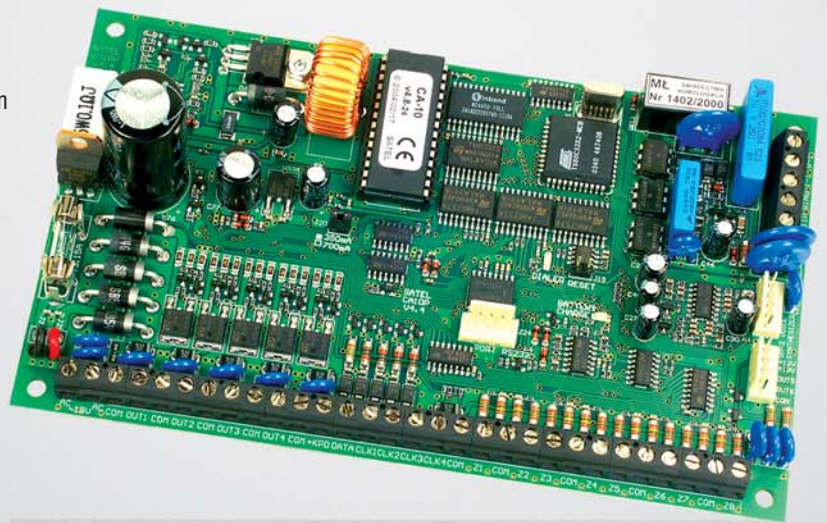
Satel®

Thanks to its multitude of features the CA-10 system provides optimum protection for medium and small-size objects.



System features

- up to 16 zones
 - 8 on-board zones
 - 2 zones on each keypad
 - expandable by adding keypads or zone expansion modules
 - 20 zone functions
 - detector trouble monitoring feature
- 6 outputs
 - 4 high power outputs 2,2A
 - 2 open collector outputs
 - fully programmable
 - 40 functions
- 4 partitions
- system controlling
 - LCD and LED keypads
 - DTMF telephone using optional MST-1 module
- programming
 - local by LCD and LED keypad
 - local by PC via RS-232
 - remote by integrated 300bps modem or external modem
- event log
 - non-volatile
 - 255 entries
 - arm, disarm, trouble, alarm
 - user functions
 - event timestamp
- codes
 - 1 service code
 - 1 master code
 - up to 13 user codes per partition
 - up to 32 user codes total
- 4 timers
 - automatic arm, disarm etc.
 - supervision of guards
- telephone dialer
 - monitoring – 2 monitoring station numbers
 - call answering for remote system supervision
 - voice and text messaging
 - remote programming with PC via modem
- telephone signal analysis
 - TBR-21 compatible telephone signal recognition
 - advanced algorithm for re-transmission attempts
- messaging
 - 8 telephone numbers (SM-2 voice synthesizer)
 - 1 voice message
 - 4 text messages sent as SMS or to pagers
- RS-232
 - local programming
 - serial printer connection
- switching mode power supply
 - 2,2A total capacity
 - short-circuit protection
 - battery condition testing
 - deep discharge battery protection
- on-line event printout
 - corresponds to monitoring station printout
 - optional event filtering
 - input, module and user names printed according to system definition
- on-line diagnostics of key system components
- CE Declaration of Conformity



CA-10 E Zone module

- 6 zones
- connected instead of one keypad



CA-10 KLCD Keypad

- LCD display
 - 2x16-character display
 - text messages
 - event log readout
 - system clock and date
 - partition status display
 - system status display
- keypad and LCD display backlight - permanent or temporary
- hold-down FIRE, PANIC and AUX alarm
- sound signals
 - alarm
 - trouble
 - entry delay
 - exit delay
 - chime on door entry
 - keypad action confirmation
- 2 zones
 - NO, NC, EOL, 2EOL/NO or 2EOL/NC configurations
 - 20 functions
 - detector trouble monitoring feature
- 6 LEDs
 - partition status display - ARMED, ALARM
 - system status display - TROUBLE
- tamper switch
- programming via RS-232
- definition of user, partition and zone names for easier controlling, supervising and event log analysis



CA-10 KLCD-L and CA-10 KLCD-S Keypads

- LCD display
 - 2x16-character display
 - text messages
 - event log readout
 - system clock and date
 - partition status display
 - system status display
- keypad and LCD display backlight – permanent or temporary
- hold-down FIRE, PANIC and AUX alarm
- 6 LEDs
 - partition status display - ARMED, ALARM
 - system status display - TROUBLE
- sound signals
 - alarm
 - trouble
 - entry delay
 - exit delay
 - chime on door entry
 - keypad action confirmation
- 2 zones
 - NO, NC, EOL, 2EOL/NO or 2EOL/NC configurations
 - 20 functions
 - detector trouble monitoring feature
- tamper switch
- programming via RS-232
- definition of user, partition and zone names for easier controlling, supervising and event log analysis



MST-1 DTMF Module

- system control by DTMF telephone
- system and zone status supervision
- CA-10 plus (4.2 and later) compatible



SM-2 Voice synthesiser

- voice message with alarm information
 - message time - up to 16 seconds
 - stored in non-volatile memory
- built-in microphone
- 2 earphone jacks for telephone line and recording supervision



CA-10 KLED-S Keypad

- 23 LEDs
 - status of 16 zones
 - partition status display - ARMED, ALARM, exit delay
 - system status display - TROUBLE
- keypad backlight - permanent or temporary
- hold-down FIRE, PANIC and AUX alarm
- sound signals
 - alarm
 - trouble
 - entry delay
 - exit delay
 - chime on door entry
 - keypad action confirmation
- 2 zones
 - NO, NC, EOL, 2EOL/NO or 2EOL/NC configurations
 - 20 functions
 - detector trouble monitoring feature
- tamper switch
- keypad bus failure indication



CA-10 KLED Keypad

- 15 LEDs
 - status of 12 zones
 - partition status display - ARMED, ALARM, exit delay
 - system status display - TROUBLE
- keypad backlight
- hold-down FIRE, PANIC and AUX alarm
- sound signals
 - alarm
 - trouble
 - entry delay
 - exit delay
 - chime on door entry
 - keypad action confirmation
- 2 zones
 - NO, NC, EOL, 2EOL/NO or 2EOL/NC configurations
 - 20 functions
 - detector trouble monitoring feature
- tamper switch



DLOAD 10

Alarm system installer software

- Windows 98/ME/2000/XP compatible
- complete system programming features
- full on-line system diagnostics
- system event log readout
- user-friendly interface
- virtual keypad
- control panel connection
 - direct via RS-232 on main board

