

The INT-SZK-GR code lock is the device designed to work in conjunction with INTEGRA and CA-64 alarm control panels. It provides an easy way to control access to spaces where doors with electrically-operated lock are installed, and to control closing status of those doors. Additionally, the code lock can exercise access control in respect of other equipment.

This manual applies to the code lock with firmware version 1.07 or later.

1. Description of code lock

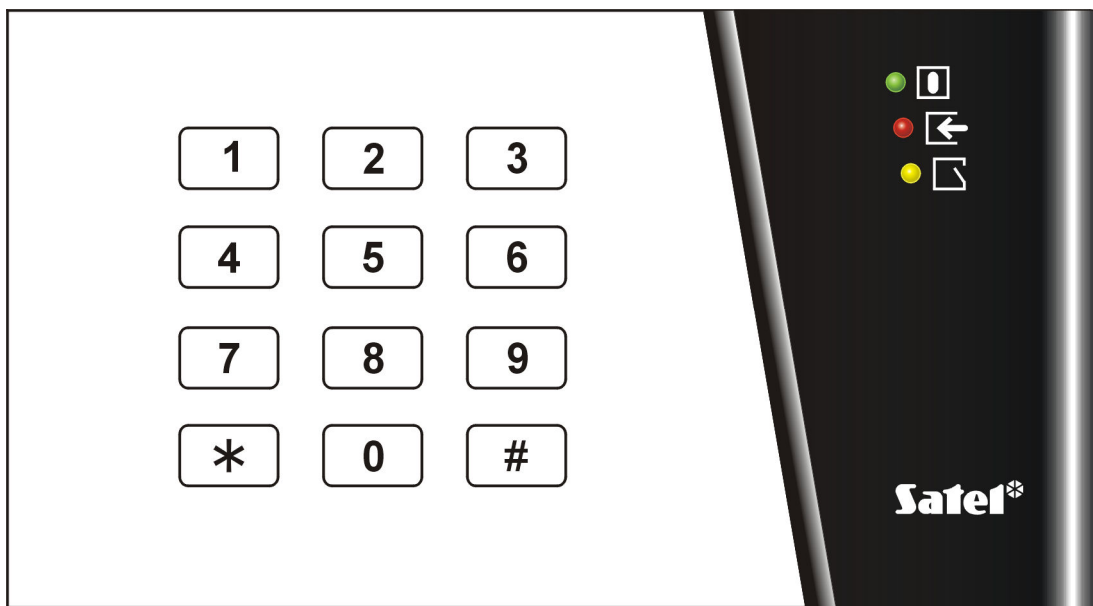

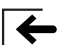



Figure 1. Code lock.

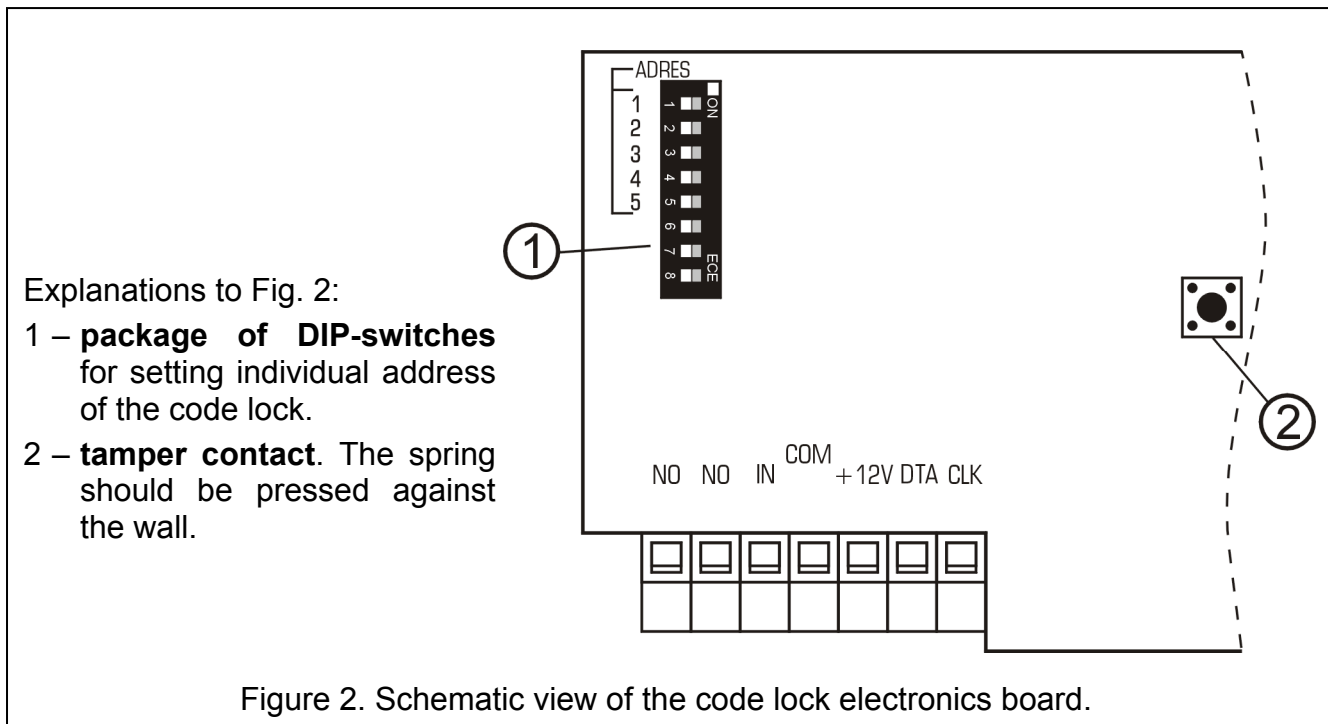
The code lock has 12 keys with permanent or temporary (automatically activated) mode backlight and LED indicators.

-  **ACTIVE** (green color) – steady light indicates that the lock is cooperating with the control panel.
-  **ACCESS** (red color) – steady light indicates that the code lock is unblocked, what means that the door can be opened.
-  **DOOR** (yellow color) – steady light indicates that the door is open.

Alternative blinking of all the LEDs (from top to bottom) indicates lack of communication between the code lock and the control panel. This situation may take place when the STARTER program is running in the control panel, or when the cable connecting the code lock and the control panel is damaged.

Information on the use of the code lock can be found in the user manual of control panel.

2. Description of electronics board



Description of the terminals:

- NO** – relay terminals. The NO terminals are used for control of the door electromagnetic lock.
- IN** – door status control input (NC). If not used, it should be short-circuited to the common ground.
- COM** – common ground.
- +12V** – power supply input.
- CLK, DTA** – expander bus.

3. Installation and connection of the module

The code lock is designed for indoor installation. It may be mounted either directly to the wall or in the OBU-M-LED metallic casing. The OBU-M-LED casing is closed with a key, which makes access of unauthorised persons to the code lock more difficult.

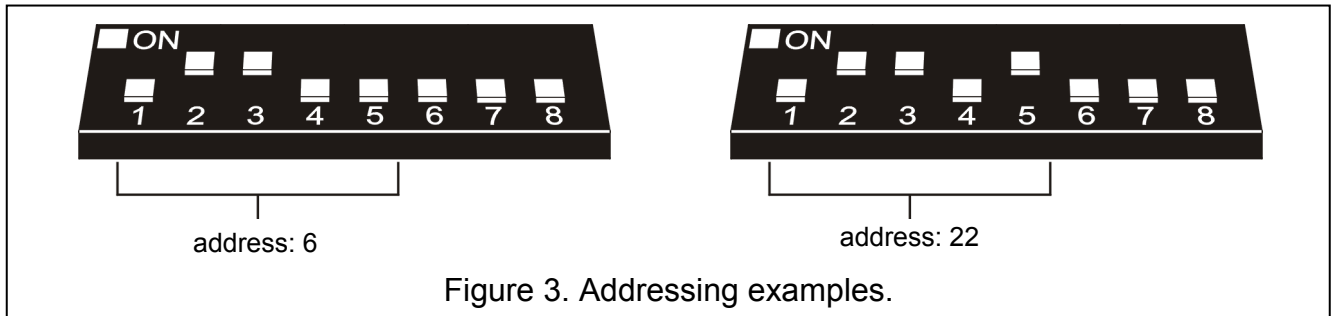
Caution: Before you start to hook up the module to the existing alarm system, make sure that the whole system is disconnected from power supply source.

1. Push in the snap catches in the lower part of module plastic casing and remove the cover.
2. Pass the lead through the opening in the lower part of the casing.
3. Attach the lower part of the casing to the wall.
4. The terminals DTA, CLK and COM connect with wires to the expander bus on the control panel PCB.
5. Using the DIP-switches, set the code lock address. The address should be set by means of the switches 1 to 5 (the status of the other switches is irrelevant). This address must differ from those of the other modules connected to the control panel expander bus. In

order to determine the code lock address, add up the numbers set on particular DIP switches, according to Table 1.

Switch number	1	2	3	4	5
Numerical equivalent (DIP switch in ON position)	1	2	4	8	16

Table 1.



Five switches make it possible to assign addresses to 32 expanders (numbers from 0 to 31). Addresses of the expanders connected to one bus may not repeat, while the addressing sequence is optional. It is recommended to assign consecutive addresses, starting from zero, to expanders and other modules connected to one bus. This will permit problems to be avoided during extension of the alarm system.

6. Connect the module power supply to the +12V terminal. The code lock supply voltage need not be provided from the control panel mainboard. A buffer power supply unit or another expander with power supply may be used for this purpose. For details concerning the cable connections see the installer manual for alarm control panels.
7. Connect the leads of the door status control detector to the terminals IN and COM.
8. Connect the leads for operation control of the electromagnetic door lock (or another device) to the NO terminals.
9. Close the casing.

4. Starting the code lock

1. Switch on power supply of the alarm system.
2. Call the "Expander identification" function in the LCD keypad (→Service mode →Structure →Hardware). After identification, the value of all settings is either zero or "None", and the options are deactivated. Lack of key operation acknowledgement gives the impression that the code lock does not respond to entering the password.

Note: During the identification process, the control panel saves in the module memory a special (16-bit) number, used for checking the module presence in the system. Replacement of the module with another one (even having the same address set on the switches) without a new identification, will result in triggering the alarm (module tamper – verification error).

3. Using the LCD keypad or DLOADX / DLOAD64 program, configure the code lock functions and define the users authorized to use the given code lock.
4. Quit the service mode or the communication session with PC and save the data in the FLASH memory.

5. Programming the code lock settings

The code lock can be programmed by means of the LCD keypad (→Service mode →Structure →Hardware →Expanders →Settings →*expander selection*) or a computer with DLOADX/DLOAD64 program. Described below are settings and options available for programming. Abbreviations from the LCD keypad display are shown at some of the functions in square brackets.

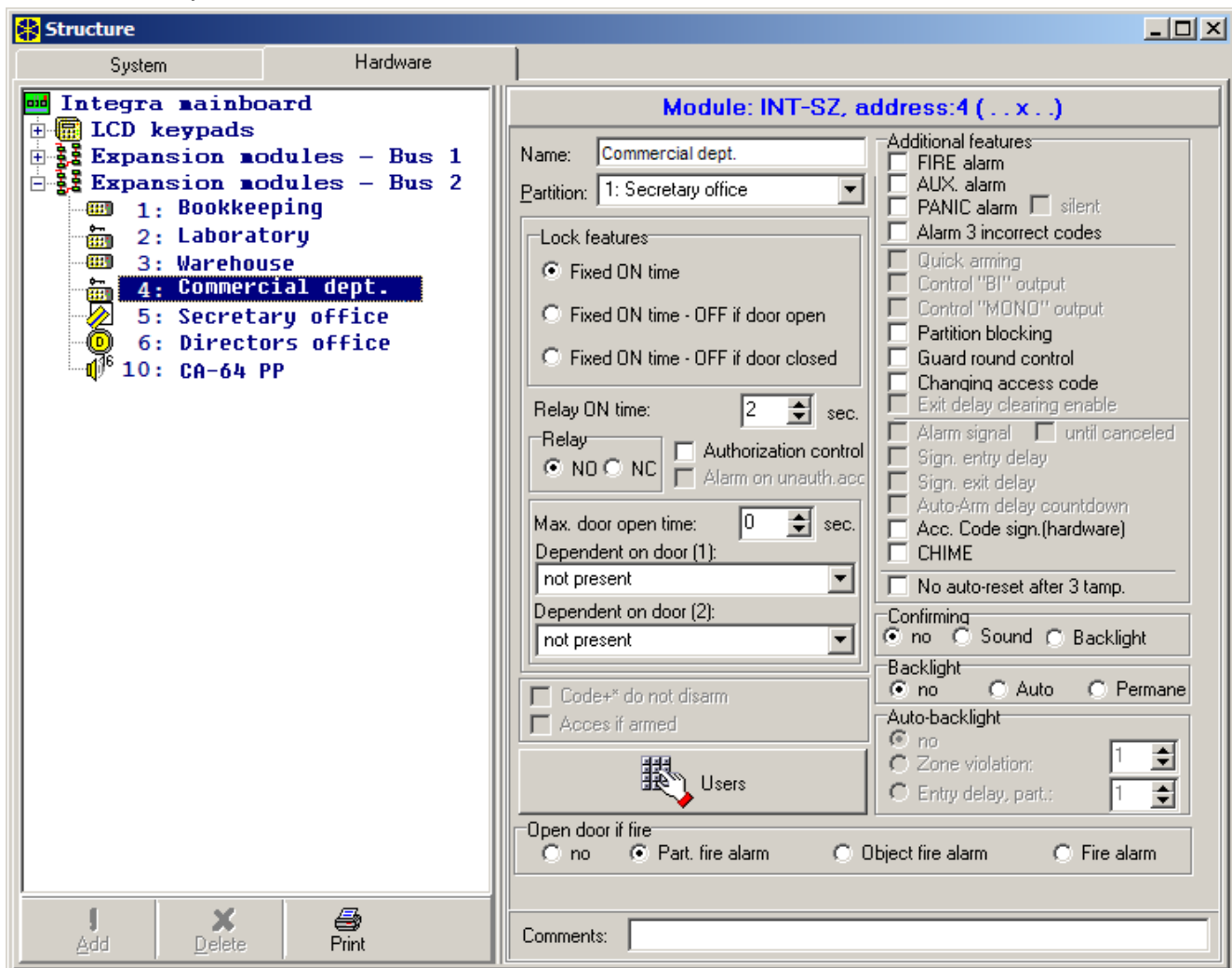


Figure 4. DLOADX program window with options for the code lock.

Name – makes it possible to give an individual (16-character) name to the module. In the LCD keypad, this option can be accessed in the following way: →Service mode →Structure →Hardware →Expanders →Name →*expander selection*.

Partition – assignment of the code lock to a partition selected from the list.

Lock feature (DLOADX)/Lock (DLOAD64) – defines the operating mode of the lock control relay. The control function is effected by controlling the state of NO contacts of the relay (electromagnetic switch) installed on the board inside the code lock housing. The relay operation is monostable. Basic state of the relay terminals is set by a separate option. Opening the door by means of the user function ([CODE][#] or [CODE][*]) changes the terminal status to the opposite one for a predetermined period of time.

Fixed ON time – after the door opening function is called by the user ([CODE][*]), the relay gets activated for the "Relay ON time" and then returns to its normal state.

Fixed ON time – OFF if door open [ON, open→off] – the relay is active until the door is opened (the IN input disconnected from common ground), but not longer than for the "relay ON time".

Fixed ON time – OFF if door closed [ON, close→off] – the relay is active during the time when the door is open (the IN input cut off from the common ground) and deactivates on closing the door (reconnection of the IN input to common ground), but not longer than for the "relay ON time".

Relay ON time – the time period during which the relay is active. Duration of the "relay ON time" can be from **1** to **255** seconds.

Relay – this option defines the operating mode of the relay contacts:

NO – the NO contacts are normally open, they close on activating the relay (during its active state),

NC – the NC contacts are normally closed, they open on activating the relay (during its active state).

Authorization control [Unauth. event] – opening the door without entering a password from the code lock (e.g. with the key) will generate an „Unauthorized door opening” event, it can also be signaled on the output type 93 (UNAUTHORIZED ACCESS).

Alarm on unauth. access [Unauth. alarm] – when the partition to which the module is assigned is armed, unauthorized opening of the door will trigger the alarm and can be additionally signaled on the output type 94 (ALARM – UNAUTHORIZED ACCESS).

Max. door open time – this option defines the time after expiry of which the module will report the „Long opened door” event to the control panel and activate the audible alarm. The duration can be set from **0** to **255** seconds.

Dependent on door 1 (or **Dependent on door 2**) – this function provides a list to choose the door which must be closed for the lock to operate. Monitoring of the door state is effected through the IN input in the code lock, partition keypad or CA-64 SR expander for proximity card readers, or through the zone type 57 (TECHNICAL – DOOR MONITORING). Two dependent doors can be selected. The function allows to create a "sluice" type passage.

Master users/Users – this function defines master users/users authorized to use the given code lock.

Alarms

FIRE alarm – holding down the [*] key will trigger the fire alarm.

AUX. alarm [Medical alarm] – holding down the key with digit "0" will trigger the auxiliary alarm.

PANIC alarm – holding down the [#] key will trigger the PANIC alarm.

Silent PANIC alarm – with this option selected, triggering the panic alarm from the code lock keypad will not set off the loud signaling; instead, a message will be sent to the monitoring station and the output type 12 (SILENT ALARM) will be activated.

Alarm 3 incorrect codes [3 wrong codes] – entering a code unknown to the control panel three times will trigger alarm.

Options

Partition blocking – entering the guard code when the partition is armed will temporarily bypass the partition.

Guard round control – entering the guard code ([CODE][#] or [CODE][*]) will be recorded as completion of the round.

Changing access code – this option enables the function of the user code changing.

Confirming – this option defines the way of communication between the control panel and the code lock user:

No – the function of code keypad operation acknowledgement is disabled.

Sound – the code keypad will generate beeps as described in the user manual for the alarm control panel.

Backlight – the audible signaling will be replaced by the blinking keypad illumination as described in the user manual for the alarm control panel.

Backlight – defines the mode of code keypad illumination

No – keypad backlighting disabled.

Auto – keypad backlighting goes on automatically on pressing any key; the function has additional options (submenu „Auto-backlight” in LCD keypad):

- **no auto-backlight** – illumination only activated by pressing one of the keys,
- **zone violation** – backlighting activated by pressing a key or by violation of the selected zone,
- **entry delay, partition** – backlighting activated by pressing a key or by starting the countdown of entry delay time in the indicated partition.

Note: *Automatic code lock keypad illumination is ON for approx. 40 seconds from the moment of its activation or from the last press of any key.*

Permanent – code lock keypad backlighting is permanently "ON".

No auto-reset after 3 tampers – each expander automatically disables the tamper alarming in the given expander after three consecutive (not cleared) tamper alarms. This prevents multiple recording of the same events in the control panel memory. The option allows this feature to be disabled.

Open door if fire [Doors on fire] – control mode for the door blocking during fire alarm:

- **no** – fire alarm has no effect on the door blocking,
- **Partition fire alarm** – fire alarm in the partition will unblock the door controlled by the module,
- **Object fire alarm** – fire alarm in the object will unblock the door controlled by the module,
- **fire alarm** – fire alarm in the system will unblock the door controlled by the module.

5. Technical data

Nominal supply voltage ($\pm 15\%$)	12V DC
Maximum current consumption	65mA
Average current consumption	19mA
Maximum voltage switched over by relay	24V
Maximum current switched over by relay	2A
Environmental class	II
Operating temperature range	-10 °C...+55 °C
Dimensions (length x height x width)	144x80x27mm
Weight	163g

The latest EC declarations of conformity and certificates are available for
downloading on the website www.satel.pl



SATEL sp. z o.o.
ul. Schuberta 79
80-172 Gdańsk
POLAND
tel. + 48 58 320 94 00
info@satel.pl
www.satel.pl