

PB-10

Panic button

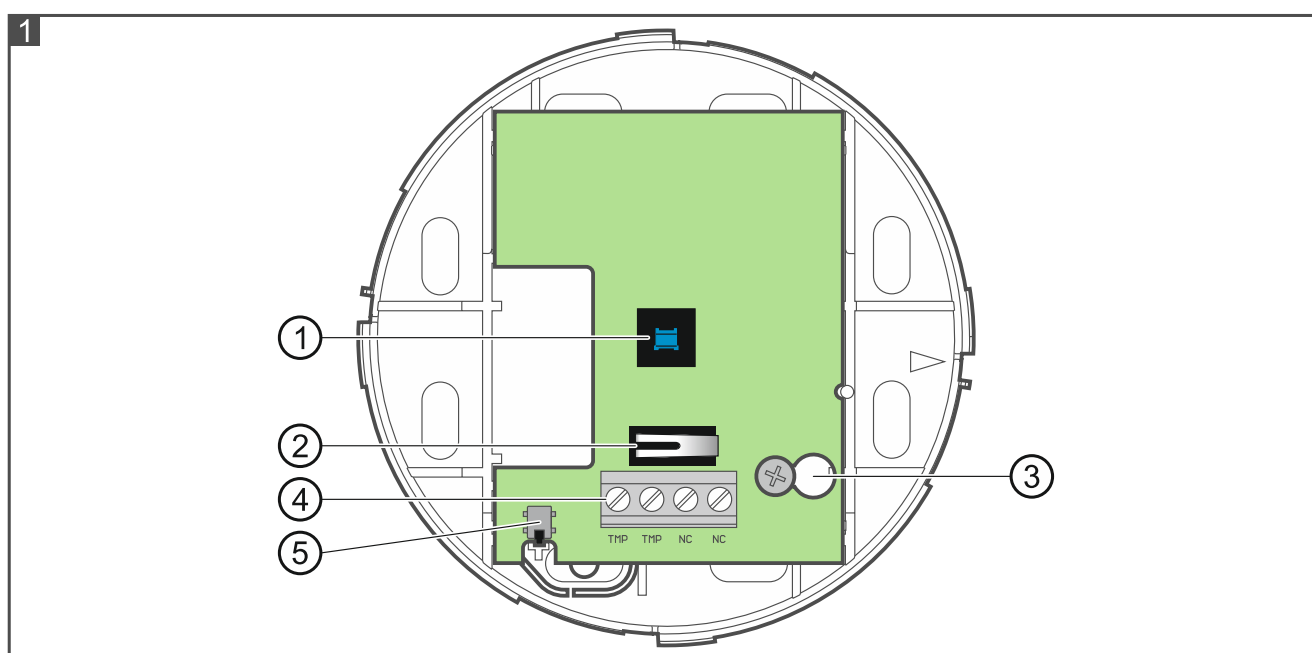
EN

pb-10_en 06/21



The PB-10 panic button is used to trigger a panic alarm or call for help in emergency situations. It can also be used to control the operation of various devices (e.g. automation or access control system devices). This manual applies to the button with electronics version 1.2.

1. Electronics board

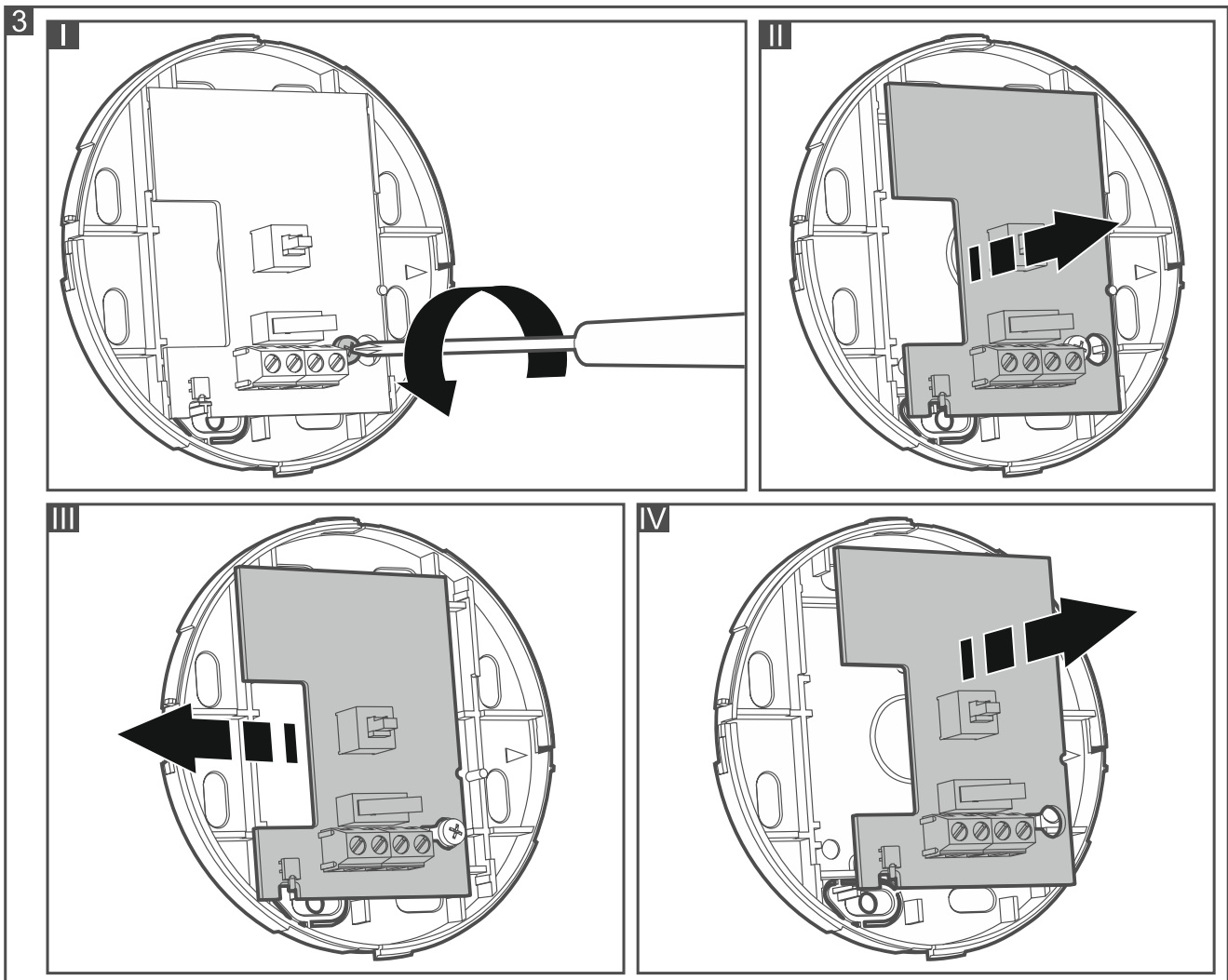
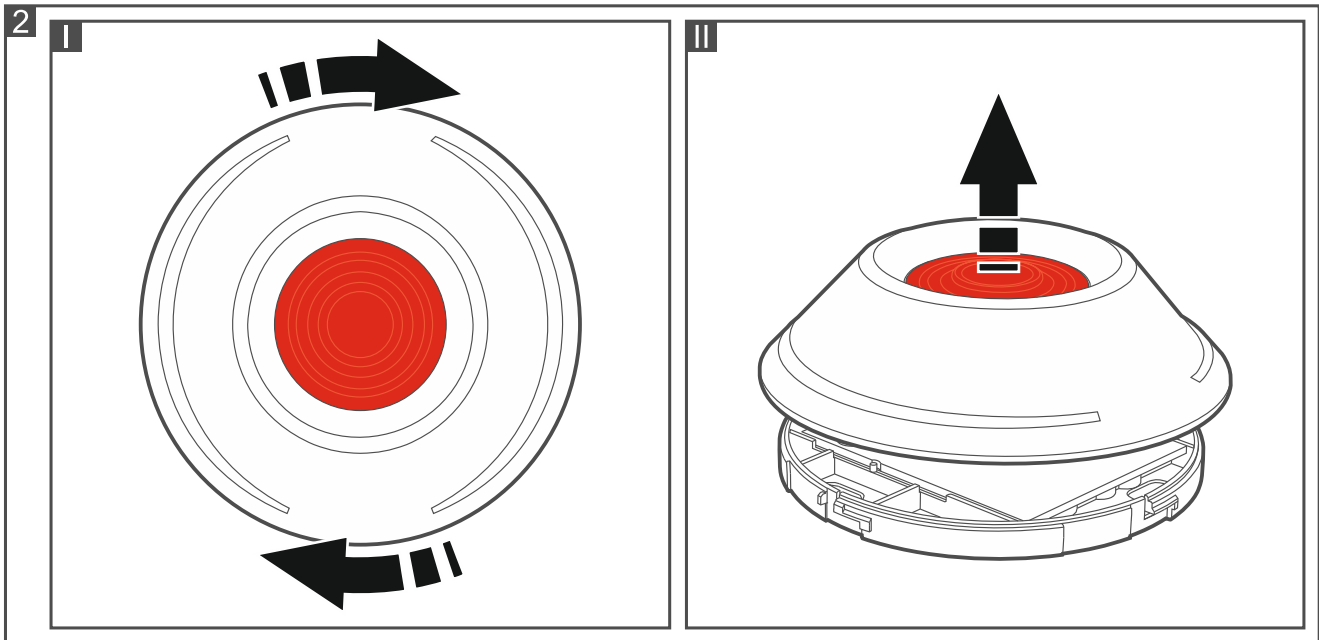


- ① button.
- ② tamper switch activated by cover removal.
- ③ fixing screw hole.
- ④ terminals:
 - TMP** - tamper output (NC). The output is open when the tamper switch is open.
 - NC** - alarm output (NC). The output is open when the button is pressed.
- ⑤ tamper switch activated by removal from mounting surface.

2. Installation

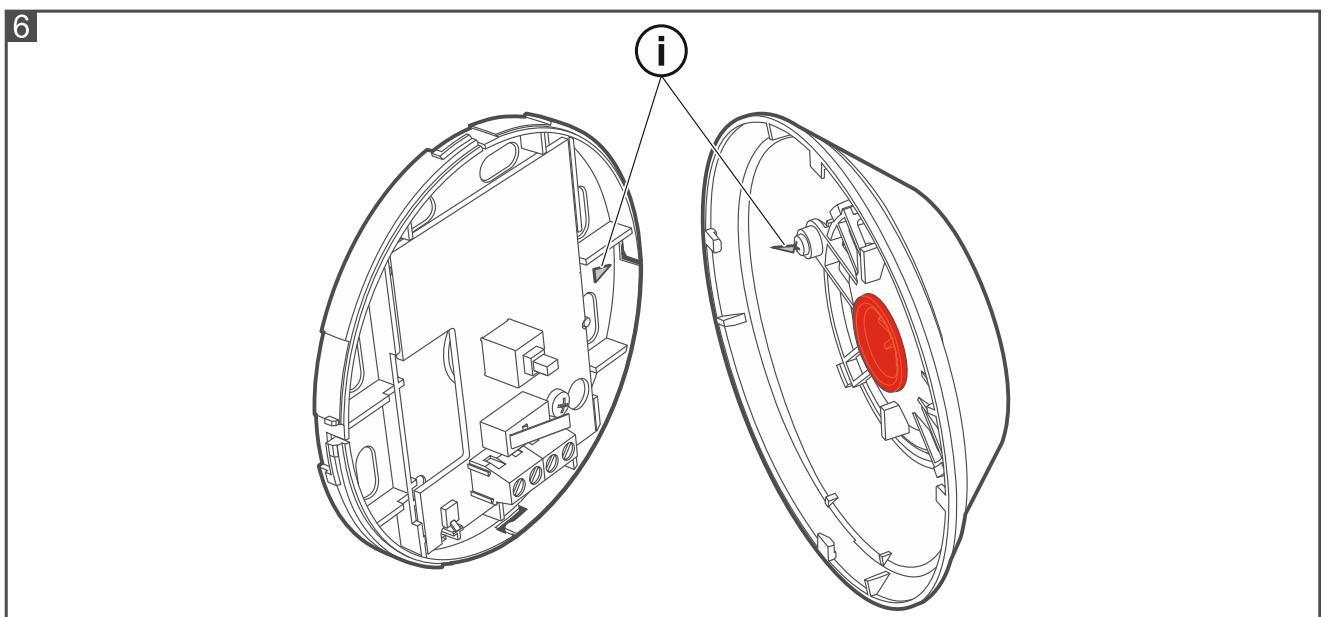
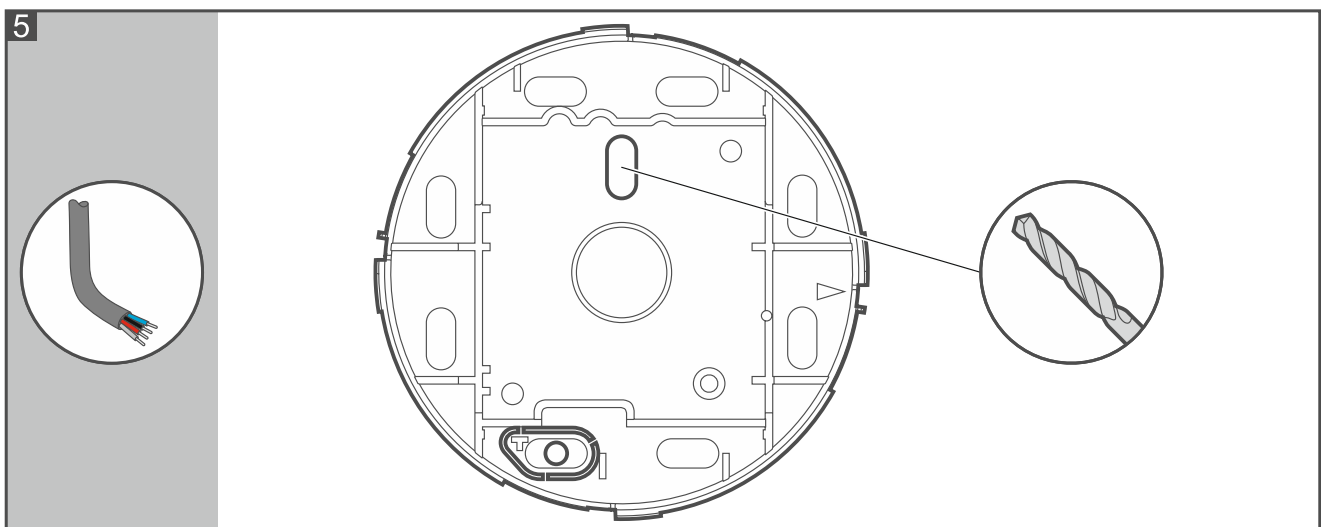
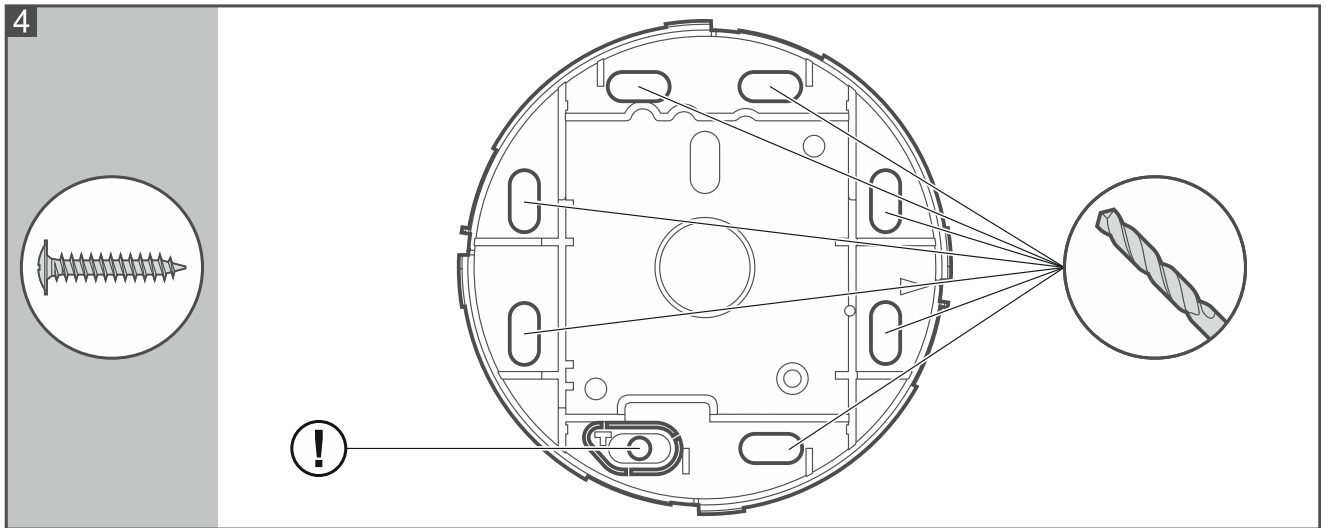
The button is designed for indoor installation.

1. Remove the button cover (Fig. 2).
2. Remove the electronics board (Fig. 3).



3. Drill the holes for screws (Fig. 4) and cable (Fig. 5) in the enclosure base. We recommend to mount the enclosure base to the surface with 3 screws. Remember to take into account the mounting hole in the tamper protection element as indicated by the (!) sign in Fig. 4.
4. Pass the cable through the prepared hole.

5. Use screws to mount the enclosure base to the surface. If necessary, select appropriate wall plugs (anchors) based on the type of the mounting surface (different for concrete or brick wall, different for plaster wall, etc.).
6. Fasten the electronics board.
7. Connect the wires to the corresponding terminals.



8. Replace the button cover. The marks on the cover and base will help you close the enclosure (Fig. 6).
9. Press the button to make sure this triggers the alarm.

3. Specifications

Outputs

alarm (NC)	100 mA / 24 VDC
tamper (NC)	10 mA / 24 VDC
Environmental class according to EN 50130-5	II
Operating temperature range	-10°C...+55°C
Maximum humidity	93±3%
Dimensions	ø97 x 29 mm
Weight.....	58 g

The declaration of conformity may be consulted at www.satel.eu/ce