

PRODUCT CATALOGUE

S4A Industrial Co., Limited

01.2024



S4A
Security For All

S4A INDUSTRIAL CO., LIMITED

- +86 755 29450011
- +86 134 10500721
- sales@s4a-access.com
- www.s4a-access.com



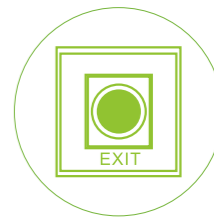
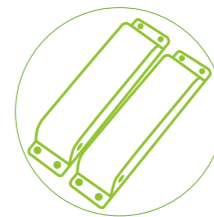
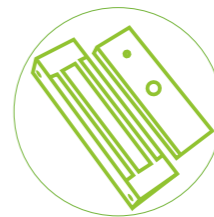
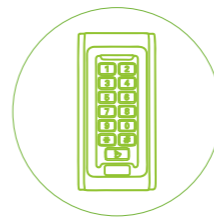
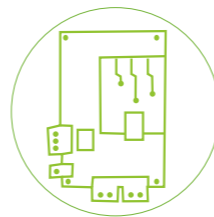
WhatsApp



WeChat



Website



Address: The 2nd floor, Jinmin'an Industrial Zone, #529, Bulong Rd. Bantian St. Longgang Dist. Shenzhen, PRC.



Product Catalog

- « Multi-Door Access Control Panel 01-06
- « Electromagnetic lock 07-12
- « Wireless Door lock 13-16
- « Fingerprint Glass Lock 17-19
- « Biometric Access Control 20-22
- « Smart Phone Access Control 23-24
- « Standalone Access Control 25-34
- « Facial & Standalone Access Control 35-36
- « Embedded Access Control 37-38
- « UHF Long Range Reader 39-42
- « Electric Cabinet Lock 43-46
- « Bluetooth Padlock 47-48
- « Electric Strike Lock 49
- « Electric Dropbolt lock 50-52
- « Electric RIM Lock 53
- « Access Power Supply 54-56
- « Access Card Reader 57-58
- « Automatic Door Operator 59-68
- « Tuya Smart Devices 69-71
- « Access Exit Push Button 72-83
- « RFID Cards And Accessories 84-89
- « Guard Tour Probe 90-94

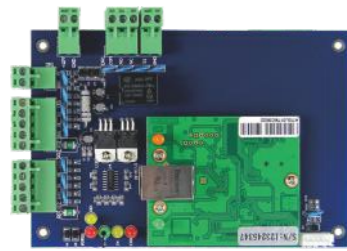
All emails must be replied within 2 hours at working time...

All technical issues must be solved within 12hours ...

NO EXCUSE!



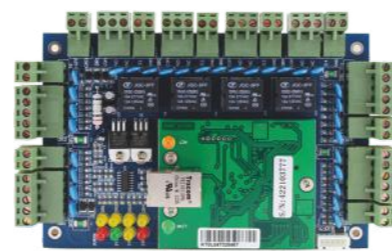
▷ Door Controller (TCP/IP Network) -Powerful Function (Free Software and SDK) Support APP+Web-based+4G



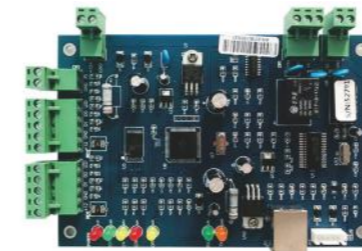
ACB-001 5 Years Guarantee
Single-door TCP/IP Door Controller
1. Control 1 door, two readers;
2. Communication Protocol: TCP/IP;
3. Door control: 1 door, 1pc relay;
4. Power Supply Input: 12V DC;



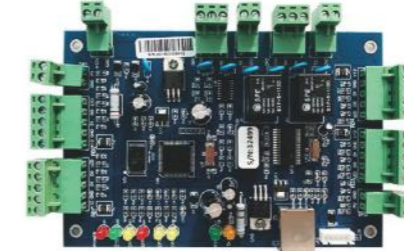
ACB-002 5 Years Guarantee
Two-door TCP/IP Door Controller
1. Control 2 door, 4 readers;
2. Communication Protocol: TCP/IP;
3. Door control: 2 door, 2pc relay;
4. Power Supply Input: 12V DC;



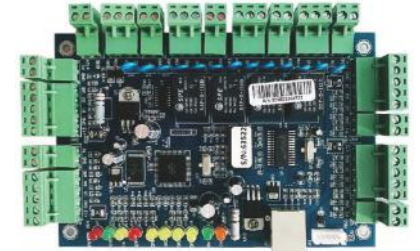
ACB-004 5 Years Guarantee
Four-door TCP/IP Door Controller
1. Control 4 door, 4 readers;
2. Communication Protocol: TCP/IP;
3. Door control: 4 door, 4pc relay;
4. Power Supply Input: 12V DC;



ACB-T01
Single-door TCP/IP Door Controller
1. Control 1 door, 2 readers;
2. Communication Protocol: TCP/IP;
3. Door control: 1 door, 1pc relay;
4. Power Supply Input: 12V DC;
5. High Speed Memory, Records never lose;



ACB-T02
Two-door TCP/IP Door Controller
1. Control 2 door, 4 readers;
2. Communication Protocol: TCP/IP;
3. Door control: 1 door, 1pc relay;
4. Power Supply Input: 12V DC;
5. High Speed Memory, Records never lose;

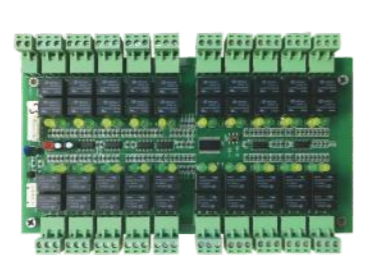


ACB-T04
Four-door TCP/IP Door Controller
1. Control 4 door, 4 readers;
2. Communication Protocol: TCP/IP;
3. Door control: 1 door, 1pc relay;
4. Power Supply Input: 12V DC;
5. High Speed Memory, Records never lose;

▷ Elevator/Locker and Door Integrated System (Software version: 7.69)



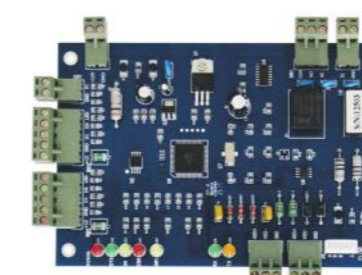
ACB-DT20
One for More Access Control
Used for lift access controller of Cabinet controller only
1. Support standard WG 26output RFID card reader;
2. Communication: TCP/IP;



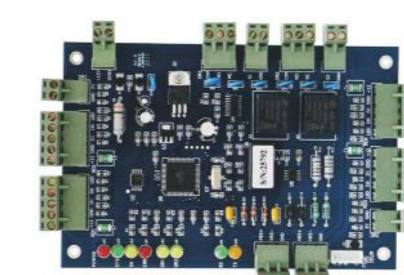
ACB-DT20K
Extend function board for 20 Floors or 20cabinet locks
1. Must work with ACB-DT20 main board;
2. With 20output relay, Can control 20 Floors or 20cabinet locks, if with more, add 1 more ACB-DT20;



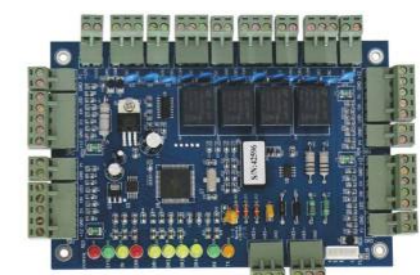
ACB-DT20 + ACB-DT20K
Control board + Extended function board
One for More Access Control + Extend function board



ACB-R01
Single-door RS485 Door Controller
1. Control 1 door, 2 readers;
2. Communication Protocol: TCP/IP;
3. Door control: 1 door, 1pc relay;
4. Power Supply Input: 12V DC;
5. High Speed Memory, Records never lose;



ACB-R02
Two-door RS485 Door Controller
1. Control 2 door, 4 readers;
2. Communication Protocol: TCP/IP;
3. Door control: 1 door, 1pc relay;
4. Power Supply Input: 12V DC;
5. High Speed Memory, Records never lose;



ACB-R04
Four-door RS485 Door Controller
1. Control 4 door, 4 readers;
2. Communication Protocol: TCP/IP;
3. Door control: 1 door, 1pc relay;
4. Power Supply Input: 12V DC;
5. High Speed Memory, Records never lose;



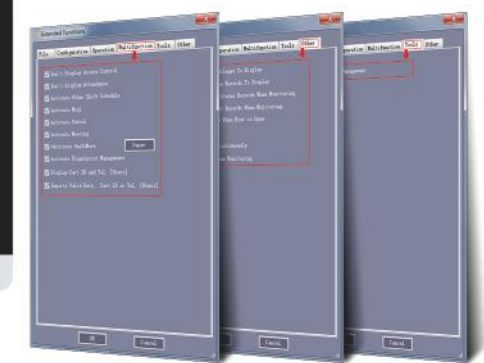
ACB-W1
Single-door TCP/IP Door Controller
1. Control 1 door, 2 readers;
2. Communication Protocol: TCP/IP;
3. Door control: 1 door, 1pc relay;
4. Power Supply Input: 12V DC;



ACB-W2
Two-door TCP/IP Door Controller
1. Control 2 door, 4 readers;
2. Communication Protocol: TCP/IP;
3. Door control: 2 door, 2pc relay;
4. Power Supply Input: 12V DC;



ACB-W4
Four-door TCP/IP Door Controller
1. Control 4 door, 4 readers;
2. Communication Protocol: TCP/IP;
3. Door control: 4 door, 4pc relay;
4. Power Supply Input: 12V DC;



Software version: V7.109 Operating system: XP, Win7, Win8, Windows10.

Databas: Access, SQLServer2008Enterprise Edition, SQLServer2014Enterprise Edition, Compatible SQL2000 and SQL2005, SQL2012, SAQL2016,



Wiegand Gate Access Control Panel

Basic functions of S4A access control

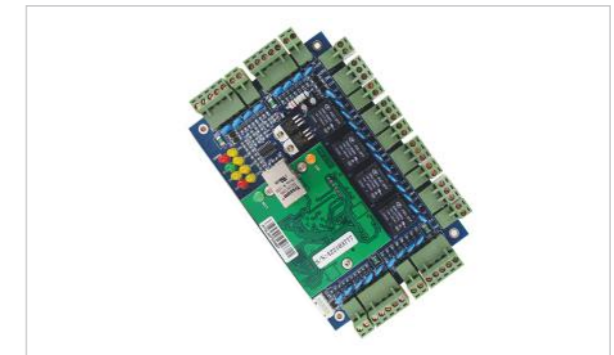
- Various rights management
- Permission management by time period
- Real-time door status display
- Forced closing and forced opening remote door
- Multiple password management
- Card + password to open the door
- Regularly open the door Regularly close the door elevator control
- Mobile APP to open the door remotely
- Fire alarm and emergency door opening
- Door linkage relay output
- Swipe card to arm and disarm burglar alarm
- After adding the fire linkage module, add the alarm horn and many more



ACB-001



ACB-002



ACB-004

Parameter	Single Door Control Panel	Multi Door (2) Control Panel	Multi Door (4) Control Panel
Model #	ACB-001	ACB-002	ACB-004
Communication	TCP/IP 10M/100M adaptive	TCP/IP 10M/100M adaptive	TCP/IP 10M/100M adaptive
Description	Control 1 door, get in and out door by swiping card, or get in by swiping card and get out door by button	Control 2 doors, get in and out door by swiping card, or get in by swiping card and get out door by button	Control 4 doors, get in the door by swiping card, and get out door by button
Size of PCB board	160mm*106mm	160mm*106mm	218mm*106mm
Size of Case	273mm*228mm*65mm		
Power Supply	12VDC 4-7A		
Power Consumption of Circuit Board	Less than 100mA		
Input Format of Reader	Wiegand 26 (All card reader with compatible protocol, such as Motorola ,HID,EM,Mifare one etc)		
Quantity of Readers	2 pcs	4 pcs	4 pcs
Door Controlled	1 door	2 doors	4 doors
Door opening time extending setting	1-600 seconds(adjustable)		
Max q' ty of controller	No limit		

Wiring Standard

220V AC power cord

Use a three-core power cord with a cross-sectional area of more than 1.0 square millimeters, and the power supply must be grounded to avoid power supply interference.

Wire from the lock to the controller

Use a two-core power cord with a cross-sectional area of more than 1.0 square millimeters. If it exceeds 50 meters, consider using a thicker wire, or multiple strands in parallel, with a maximum length of 100 meters. For the line from the door sensor to the controller, it is recommended to choose a two-core wire with a wire diameter of more than 0.22 square millimeters. If there is no need to know the opening and closing status of the door online, or the door is not closed for a long time, the alarm and illegal intrusion alarm interlock functions. The magnetic wire can not be connected.

Card reader to controller wire

The cross-sectional area of the card reader wiring is ≥ 0.22 square millimeters, and the five types of network cables and super five types of network cables can be used. If the card reader is not required to distinguish legal cards and illegal cards through sound and light feedback, BEEPER (blue) and LED (brown) can be omitted. It is better for the data lines Data1 and Data0 to be twisted pairs; The distance cannot exceed 100 meters, and it is recommended to be within 80 meters. If the distance from the card reader to the controller exceeds 50 meters, it is recommended to use bold or multiple strands to power the card reader, which will help improve the performance of the card reader.

Wire from the lock to the controller

Use a two-core power cord with a cross-sectional area of more than 1.0 square millimeters. If it exceeds 50 meters, consider using a thicker wire, or multiple strands in parallel, with a maximum length of 100 meters. For the line from the door sensor to the controller, it is recommended to choose a two-core wire with a wire diameter of more than 0.22 square millimeters. If there is no need to know the opening and closing status of the door online, or the door is not closed for a long time, the alarm and illegal intrusion alarm interlock functions. The magnetic wire can not be connected.

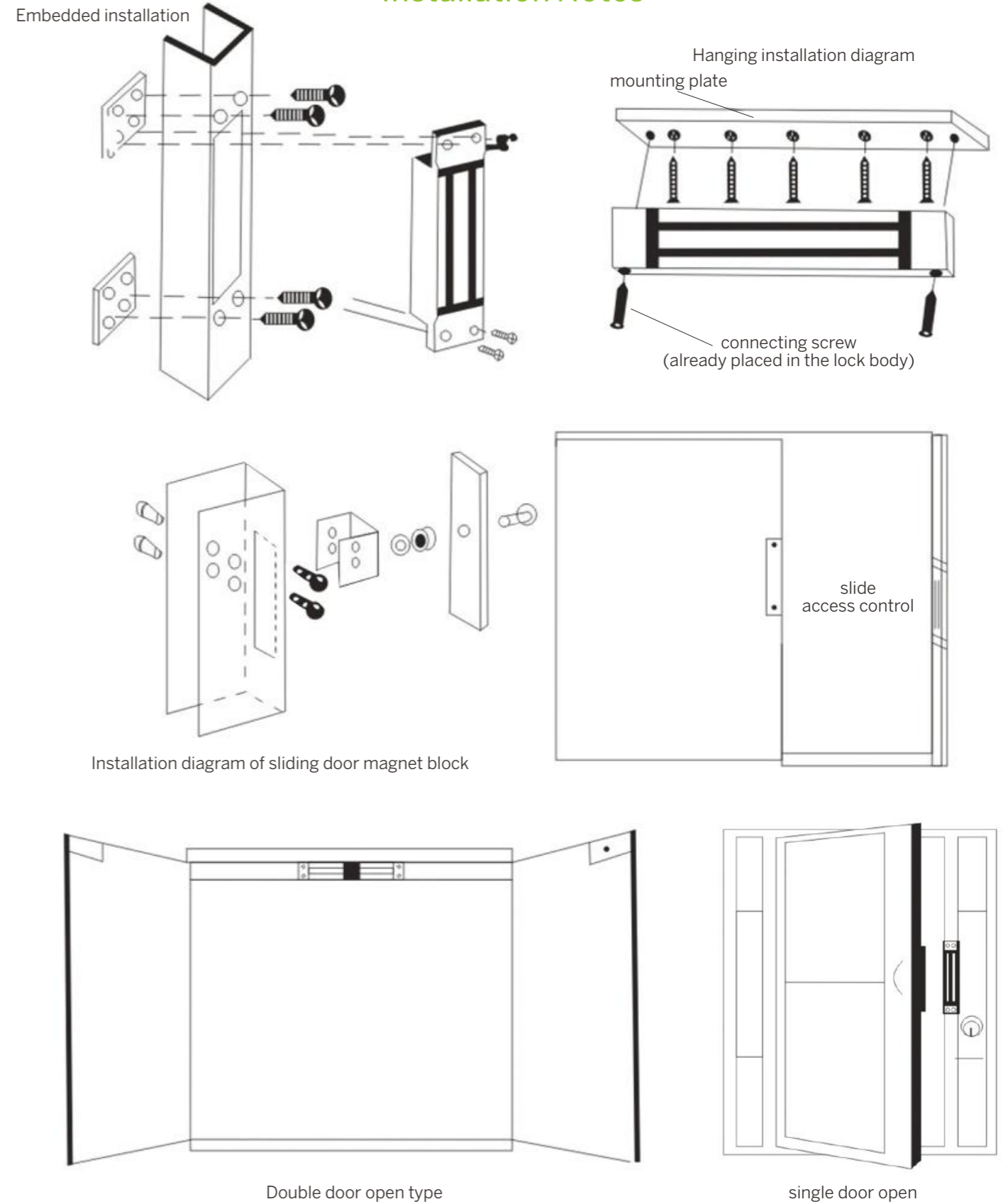
Button to controller wire

It is recommended to use two-core wire with a wire diameter of more than 0.22 square millimeters.

The TCP/IP communication line is the same as the wiring method of the computer network. The controller to the switch or the HUB uses an ordinary network cable, and the distance should be less than 100 meters. The longer the distance, the higher the quality requirements of the cable. It is recommended to use branded network cables.



Installation Notes





EL-100
60kg Electromagnetic Lock
1. Lock Size: 79Lx40Wx23H(mm)
Armature plate: 75Lx31Wx10H(mm)
2. Voltage: DC12V or DC24V
3. Working Current: 12V/100mA
24V/200mA



EL-H100
60kg Electromagnetic Lock
1. Lock Size: 114Lx35Wx23H(mm)
Armature plate: 75Lx31Wx10H(mm)
2. Voltage: DC12V or DC24V
3. Working Current: 12V/100mA
24V/200mA



EL-200/EL-200S
70KG Electromagnetic Door Lock
1. Lock Size: 110Lx37Wx24H(mm)
Armature plate: 74Lx33Wx11H(mm)
2. Holding Force: 60KG(100Lbs)
3. Input voltage: DC24/12V
4. Working current: 120mA/240mA



EL-350D / EL-350DS / EL-350DST
180kg Double Electromagnetic Lock
EL-350D: Without signal output
EL-350DS: With signal output
EL-350DST: LED, door sensor and time delay
1. Lock Size: 340Lx41.4Wx20.5H(mm)
2. Voltage: DC12V and DC24V (adjustable)
3. Current Draw: 12V/300mAx2
24V/150mAx2



EL-600 / SD / SZ / ST / SA
280kg Single Electromagnetic Lock
EL-600: Without indicator lights
EL-600SD: Built in LED and door sensor
EL-600SZ: LED, door sensor and buzzer
EL-600ST: LED, door sensor and time delay
EL-600SA: 9wires with access control function need to work with iButton reader
1. Lock Size: 250Lx48.5Wx25H(mm)
2. Voltage: DC12V and DC24V
3. Current Draw: 12V/500mA
24V/250mA



EL-W600 2 Wires
280kg Waterproof Electromagnetic lock
1. Lock Size: 220Lx47Wx28H(mm)
2. Voltage: DC12V
NEW
4 Wires: 12V & 24V adjustable
7 Wires: 12V & 24V adjustable and door sensor function, NO/NC/COM



EM-100T
60kg Electromagnetic Lock
1. Lock Size: 120Lx32.5Wx23H(mm)
Armature Plate Size: 76Lx33Wx11H(mm)
2. Input Voltage: DC12V (Option DC24V)
3. Current: 12V/160mA (ff10%);
24V/80mA (ff10%)



EL-150
Magnetic lock for Auto-Door
1. Voltage: DC12V (24V is customized)
2. Current Draw: DC12V/180mA
3. Suitable: For auto-Door
4. Surface process: High temperature paint and environment protection Zinc



EL-W220
110kg Waterproof Electromagnetic lock
Fine iron electroplating
1. Lock Size: 160Lx28Wx19H(mm)
Armature plate: 130Lx28Wx11H(mm)
2. Voltage: 12V or 24V
3. Working Current: 12V/200mA 24V/100mA



EM-600T / EM-600TS
280kg Embedded Electromagnetic Lock
EM-600T: Without signal output
EM-600TS: With signal output
1. Lock Size: 258Lx42Wx26H(mm)
Armature plate: 180Lx38Wx11H(mm)
2. Voltage: DC12V or DC24V
3. Current Draw: 12V/500mA 24V/250mA



EL-600D / EL-600DS / EL-600DST
280kg Double Electromagnetic Lock
EL-600D: Without indicator lights
EL-600DS: Built in LED, door sensor
EL-600DST: Built in LED, door sensor and time delay
1. Lock Size: 500Lx48.5Wx25H(mm)
2. Voltage: DC12V and DC24V (adjustable)
3. Current Draw: 12V/500mA x2
24V/240mA x2



EL-250
Door Handle Magnetic lock
1. Application: All types of 90° pull door
2. Voltage: DC12V and DC24V
3. Current: 12V/450mA 24V/235mA
4. Lock Size: 300x92x58mm
6. Delay Time: 0,3,5,9 Sec.



EL-350 / EL-350ST
180kg Single Electromagnetic Lock
EL-350: Without signal output
EL-350ST: With signal output
1. Lock Size: 170Lx41.5Wx20.5H(mm)
2. Voltage: DC12V or DC24V
3. Current Draw: 12V/300mA 24V/150mA



EL-350LS **NEW**
180kg Single door EM lock with 5wires
EL-350LS: With LED and signal output (NO/NC/COM)
1. Lock Size: 200Lx41.7Wx21.7H



EM-350T / EM-350TS
180kg Embedded Electromagnetic Lock
EM-350T: 12V
EM-350TS: 12V and with Signal output
1. Without door position detection output
2. Lock Size: 194Lx34Wx23H(mm)
3. Voltage: DC12V or DC24V
4. Current Draw: 12V/480mA 24V/240mA



EL-800 / SD / ST / SZ
350kg Single Electromagnetic Lock
EL-800: Without indicator lights
EL-800SD: Built in LED and door sensor
EL-800ST: Built in LED, door sensor and time delay
EL-800SZ: LED, door sensor and buzzer
1. Lock Size: 285Lx55Wx27.5H(mm)
2. Voltage: DC12V and DC24V (adjustable)
3. Current Draw: 12V/500mA 24V/250mA



EM-800T / EM-800TS
350kg Embedded Electromagnetic Lock
EM-800T: Without signal output
EM-800TS: With signal output
1. Lock Size: 273Lx44Wx27.5H(mm)
Armature plate: 180x45x11(mm)
2. Voltage: DC12V or DC24V
3. Current Draw: 12V/480mA 24V/240mA



EL-800D / EL-800DS / EL-800DST
350kg Double Electromagnetic Lock
EL-800D: Without indicator lights
EL-800DS: Built in LED, door sensor
EL-800DST: Built in LED, door sensor and time delay
1. Lock Size: 570Lx55Wx27.5H(mm)
2. Voltage: DC12V or DC24V
3. Current Draw: 12V/480mA x2 24V/240mA x2



EL-1200 / SD / SZ / ST

500kg Single Electromagnetic Lock
EL-1200: Without indicator lights
EL-1200SD: Built in LED and door sensor
EL-1200SZ: ED, door sensor and buzzer
EL-1200ST: Built in LED, door sensor and time delay
 1. Lock Size: 265Lx72Wx40H(mm)
 2. Voltage: DC12V and DC24V (adjustable)
 3. Current Draw: 12V/420mA 24V/210mA



EM-1200T

500kg Embedded Electromagnetic Lock
 1. Lock Size: 258Lx65.8Wx38.8H(mm)
 Armature plate: 185x60x13(mm)
 2. Voltage: DC12V or DC24V
 3. Current Draw: 12V/420mA 24V/210mA



EL-W1200 2 Wires

500kg Waterproof Electromagnetic lock
 1. Lock Size: 222Lx62Wx38H(mm)
 2. Voltage: DC12V
NEW
4 Wires: 12V & 24V adjustable
7 Wires: 12V & 24V adjustable and door sensor function, NO/NC/COM



L Bracket is for Inward Door

L Bracket	Z Bracket	U Bracket
LB-350: 180kg	ZB-350: 180kg	UB-350: 180kg
LB-600: 280kg	ZB-600: 280kg	UB-600: 280kg
LB-800: 350kg	ZB-800: 350kg	UB-800: 350kg
LB-1200: 500kg	ZB-1200: 500kg	



Z Bracket is for Inward Door



U Bracket is for Frameless Glass

Specifications	
Material Selection	High Strength Aluminum, Sandblast Finished
Suitable for Door	In-swing Door
Opening Mode	90° Degree Door
Finished for Shell	Anodized aluminum



EL-1200D / DS / DST

500kg Double Electromagnetic Lock
EL-1200D: Without indicator lights
EL-1200DS: Built in LED, door sensor
EL-1200DST: Built in LED, door sensor and time delay
 1. Lock Size: 530Lx72Wx40H(mm)
 2. Voltage: DC12V or DC24V
 3. Current Draw: 12V/500mAx2 24V/250mAx2



SL-1200

1200kg Hidden Magnetic Shear lock
 1. Brushed aluminum
 2. Magnet size: 182Lx30Wx25D(mm)
 3. Operating voltage: DC 12V/24V
 4. Working current: DC12V, pull in: 900mA, holding: 220mA, DC24V, pull in: 900mA, holding: 190mA



UI-600

280KG U Bracket And I Bracket
 1. Shell material: aluminum alloy
 2. Specifications: 280 edge U clip



AP-600

Armature plate
 I bracket is used to install the plate on the door leaf.
 1. Material are High Strength Aluminum. Sandblast Finished
 2. Suitable Narrow Door
 3. Opening Mode 90 Degree Door
 4. Finished for Shell Anodized aluminum
 5. Compatible with EL-600 series 280KG only



FG-600

Bracket for Fully Frameless Glass Door
 This is a very useful bracket for Fully Frameless Glass Door with High Strength Aluminum, Sandblast Finished.
 1. Glass Thickness 10-15mm
 2. Opening Mode 90 Degree Door
 3. Finished for Shell Anodized aluminum
 4. Compatible with EL-600 series 280KG only



ZLC-600

ZLC Bracket for Inward Door
 1. ZLC bracket is new designed bracket which can hide the wires
 2. Suitable for Inward Door
 3. Use for EL-600 280KG series magnetic lock
 4. Finish: Anodized Aluminium.



280kg single-door surface-mounted magnetic lock, 12V, 2 wires, power-on lock, power-off unlock (magnetic lock with indicator light after power-on)
 The lock is made of aluminum alloy material, which is sturdy and durable.

When installing, pay attention to align the lock body and the iron plate. When installing the iron plate, do not fix it too tightly, and there should be room for shaking on both sides, so as to achieve a better fit.



Access control smart door lock



<< iFace 304
460*140*340mm

Face Recognition Standalone door lock

- Panel: Aluminium magnesium alloy
- Handle: 304 Stainless Steel
- Colors: Silver/Golden/Red Bronze/Wooden Heart Mix
- Surface treatment: PVD/drawing
- Mortise/cylinder: ANSI or EU standard or fire-proof mortise
- Verify mode: 50Face + 50 M1+50Password +2 Mechanical key
- Door thickness: 38mm-80mm available

Fingerprint door lock

- Panel: Aluminium magnesium alloy
- Finger Capacity: 170pcs
- Password Capacity: 20group
- Mifare Card Capacity: 80 group
- With touch-screen LED display
- Work with 8.4V lithium battery
- Working temperature: -30°~50° range
- Built in 9V USB emergency power

FP-305>>
355*78*38mm



<< FP-306
325*70*150mm



Fingerprint door lock

- Door open: Finger/Pincode/Mechanical Key
- Door thickness: 40mm-120mm available
- Working Voltage: 4pcs lithium battery
- Finger Capacity: 300pcs
- Lock body: SUS 304 stainless steel
- Built in USB
- Working temperature: -30°~50° range
- Weight: 6KG



<< iLock01
240*60*22mm



∨ Fingerprint Door Lock

- Power supply: 4.5V-6V
- Quiescent current: <50-65mA
- Working current: >250mA (strong driving ability)
- Number of fingerprints for door openin: <=100
- Quantity of open door cards: <=100
- Number of passwords to open the door: <=100

Fingerprint door lock ∨

- Power supply: 4.5V-6V
- Quiescent current: <50-65mA
- Working current: >250mA (strong driving ability)
- Number of fingerprints for door openin: <=100
- Quantity of open door cards: <=100
- Number of passwords to open the door: <=100

iLock01K >>
240*60*22mm



iLock01

All-in-one smart fingerprint lock

Adopt semiconductor fingerprint module, fast identification, high sensitivity, more flexible use frequency



D5-S

433MHz Wireless door lock

1. Wireless Lock
2. With 4pcs Remote Transmitters
3. The lock can pair Max.16 Remote Transmitters
4. 433MHz Rolling Code technology
5. Communication distance: 50m Max
6. Wireless Lock operated by 2 units AA batteries



D5-P (Indoor use)

433MHz Wireless door lock work with Keypad Access Control (For Metal or Wooden door)

1. 433MHz Rolling Code technology
2. 500PIN/card users
3. 4-8 digits PIN, 125KHz EM card
4. Communication distance: 50m Max
5. Open/Close by Keypad, transmitter, or touch the lock



D5 (Outdoor use)

433MHz Wireless door lock work with Keypad Access Control (For Metal or Wooden door)

1. Metal design & Waterproof Keypad, can install outside
2. 433MHz Rolling Code technology
3. 500PIN/card users
4. 4-8 digits PIN, 125KHz EM card
5. Communication distance: 50m Max
6. Open/Close by Keypad, transmitter, or touch the lock

No need cable, No need drilling 3M tape for easy install Battery operated



D2-S

433MHz Wireless door lock

1. Communication way 433MHz(ffl500KHz)
2. Power Wireless lock: 4pcs AA batteries
3. Transmit: 1pcs lithium battery
4. Working distance Within 5 meters
5. Door-opening Angle 180°
6. With Door Magnetic sensor



D2 (Indoor use)

433MHz Wireless door lock work with KeypadAccess Control (For Metal or Wooden door)

1. Support 500 PIN/card users/4-8 digits PIN, 125 KHz EM Card
2. With two Standard Remote Transmitters
3. 433MHz Rolling Code technology
4. Communication distance: 50m Max
5. Ultra low power consumption



D4 (Outdoor use)

433MHz Wireless door lock work with KeypadAccess Control (For Metal or Wooden door)

1. Metal design & Waterproof Keypad, Can install it in outside
2. 433MHz Rolling Code technology
3. 500PIN/card users
4. 4-8 digits PIN, 125KHz EM card
5. Communication distance: 50m Max
6. Open/Close by Keypad, transmitter, or touch the lock

No need cable, No need drilling 3M tape for easy install Battery operated



WS1 NEW

Wireless Access Control Kits

1. All wireless, no need wires any more
2. 433MHz Rolling Code technology
3. With two remote transmitters
4. 100 PIN/card users
5. 4-6 digits PIN, 125KHz EM or 13.56MHz Mifare card optional
6. Open the lock by keypad, wireless exit button and remote transmitters



↳ Fingerprint Glass Door Lock

Support USB to download attendance record



iGlass100

iGlass300

iGlass668 ^{NEW}

iGlass668-J ^{NEW}
(Suitable for sliding glass door)

Model No.	iGlass100	iGlass300	iGlass668	iGlass668-J
Finger Capacity	1000	1000	2000	2000
User Capacity	3000	3000	3000	3000
LCD Display	2.4 inch	2.4 inch	2.4 inch	2.4 inch
Different Color	Black	Black, Silver	Black,	Black,

↳ Fingerprint Glass Door Lock



iGlass308

iGlass328

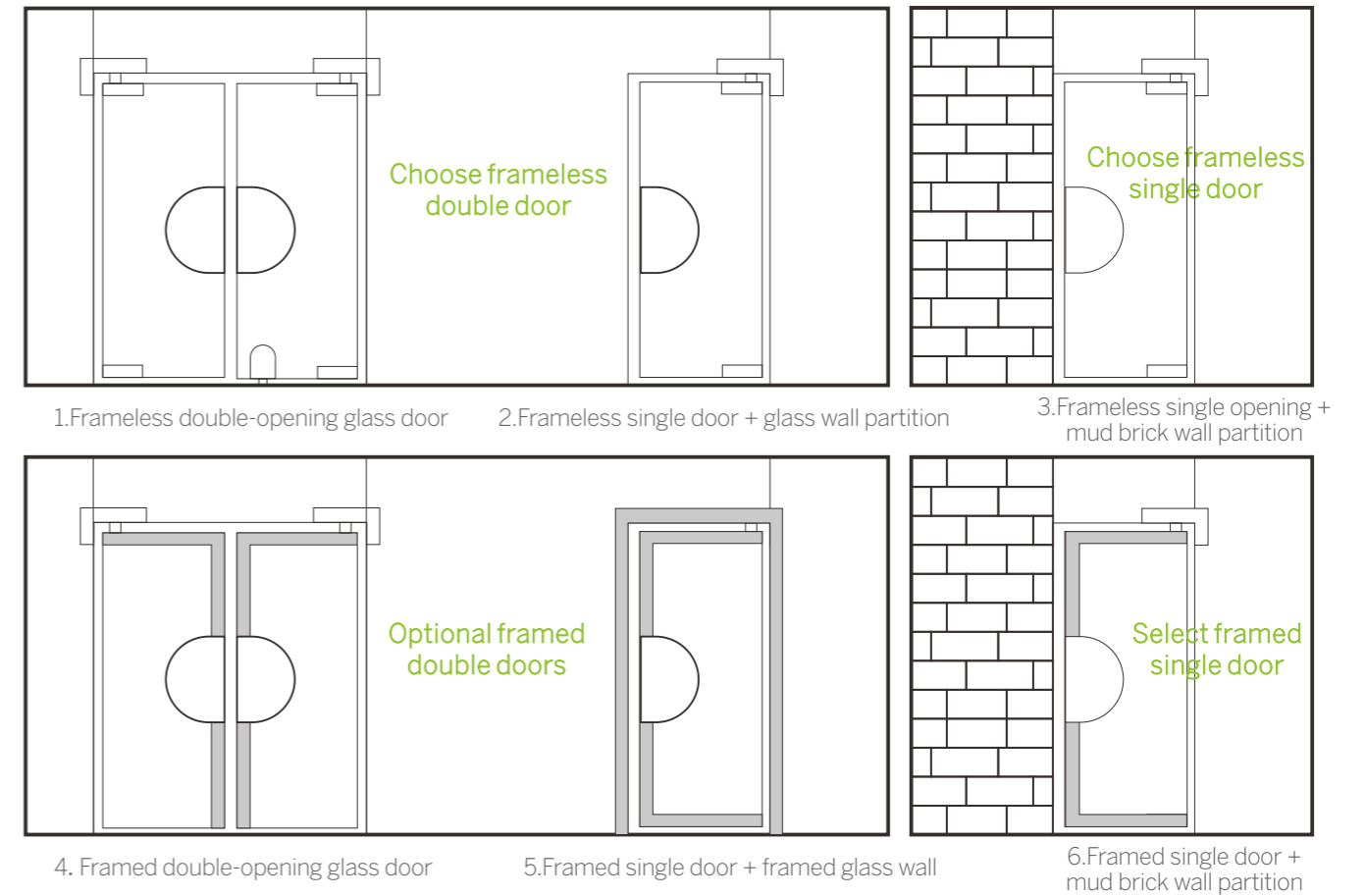
iGlass500

iGlass600

Support USB to download attendance record

Model No.	iGlass308	iGlass328	iGlass500	iGlass600
Finger Capacity	1000	1000	500	500
User Capacity	3000	3000	2500	2500
LCD Display	2.4 inch	2.4 inch	0.96 inch	1.7 inch
Different Color	Black, Black+Silver	Black	Black	Black

↳ Identify conventional glass door shapes



↳ Fingerprint Glass Door Lock



KB108

Capacitive Fingerprint Sensor
 Finger + IC + Pincode + Tuya APP

iGlass508S

Work with 4pcs 1.5V "AA" alkaline battery
 Fingerprint Sensor: Semiconductor (Support: Fingerprint+RFID+Pincode)

iGlass K190-T

Ttlock Glass Door Lock
 1.Unlock method:
 APP unlock/
 fingerprint/password/
 swipe card/remote control (optional)
 2.Fingerprint Type:
 Semiconductor Fingerprint Sensor

KB170

Fingerprint Electronic Deadbolt Lock
 1.Case:ABS material
 2.Speed:<0.5s
 3.Emergency:USB power supply



Accessories

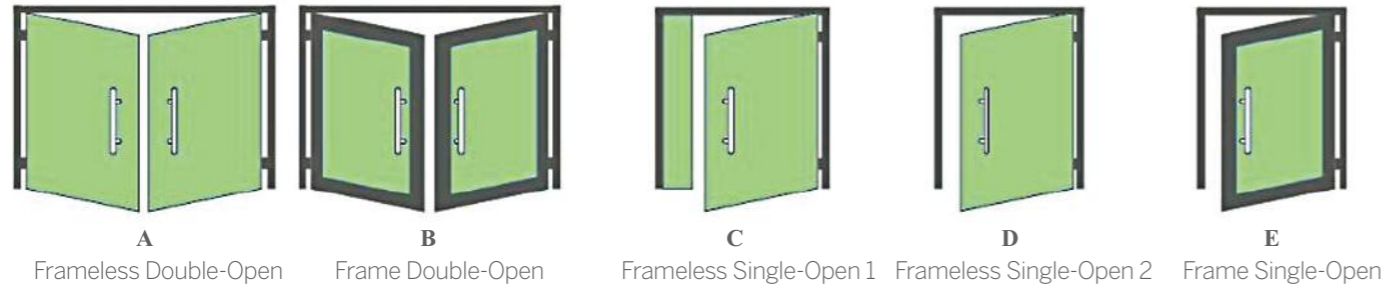


Remote Control
 Include (transmit+receiver)
 433MHz
 Maximum support 15pcs Transmit



Ground Latch
 Accessories
 1. Glass door Thickness: 10-12mm
 2. Lock and Unlock by Manual

Door Type Options Choose what's kind of doors you need to install



Standard/Frameless Double Door

- >Corresponding to the and kinds of glass doors form
- >70% of household glass is like this
- >Main configuration: main lock + secondary lock
- >can be installed by yourself

Frameless single door

- >Corresponding to the third type of glass door
- >Main configuration: main lock + side strip
- >When installing the master lock, no opening is required
- >When installing the edge strip, the solid wall needs to have a hole
- >Self-installation is not recommended

With frame (Package edge) double door

- >Corresponding to the glass door shape
- >Main configuration: front and rear split main lock + auxiliary lock
- >When installing the master lock, a hole is required on the door frame
- >When installing the secondary lock, there is no need to open a hole
- >Self-installation is not recommended

Framed (Package edge) single door

- >Corresponding to the 6th type of glass door
- >Main configuration: split main lock + side strip
- >Multiple holes are required for installation
- >Self-installation is not recommended

Double Door Holeless Fingerprint Lock



S4A-BL20 Double door
 Double Door Holeless Fingerprint Lock
 1. Unlocking method: Fingerprint+Bluetooth+Key
 2. Application: WeChat mini program + APP
 3. Fingerprint capacity: 100



S4A-BL20 Single opening
 Biometric Glass Door Lock
 1. Unlocking method: Fingerprint+Bluetooth+Key
 2. Application: WeChat mini program + APP
 3. Fingerprint capacity: 100



S4A-BL20 Single opening
 Smart Fingerprint Glass Door Lock
 1. Unlocking method: Fingerprint+Bluetooth+Key
 2. Application: WeChat mini program + APP
 3. Fingerprint capacity: 100



S4A-BL20 Sliding door
 Smart Biometric Glass Door Lock
 1. Unlocking method: Fingerprint+Bluetooth+Key
 2. Application: WeChat mini program + APP
 3. Fingerprint capacity: 100



<< FTZN-001



Face Recognize Thermal Temperature Monitoring Solution

- Support Access Control & Time Attendance
- Screen: 7 inch
- Detect Distance: 0.3m~0.5m
- Dimensions: 240x126x27mm
- Built-in Infrared camera
- Abnormal temperature Alarm



<< FTZN-002 ^{NEW}



Face Recognize Thermal Temperature Monitoring Solution

- Support Access Control & Time Attendance
- Screen: 8 inch
- Detect Distance: 0.3m~0.5m
- Dimensions: 252x130x26mm
- Built-in Infrared camera
- Abnormal temperature Alarm



<< FTZN-003 ^{NEW}



Face Recognize Thermal Temperature Monitoring Solution

- Support Access Control & Time Attendance
- Screen: 8 inch
- Detect Distance: 0.3m~0.5m
- Dimensions: 240x120x24mm
- Built-in Infrared camera
- Abnormal temperature Alarm



<< iFace 305



Dynamic Face Access Control

- Card: IC 13.56Mhz
- Screen: 5 inch
- Face capacity: 2000users
- Detecting distance: 0.3-5m
- Dimensions: 200x95x24mm
- It can monitor 5people together
- Built in TCP/IP and Software



TFA-1 >>
190*80*31mm



<< TFA-2
200*90*31mm



Facial Access Control

- Display: 2.8 inch
- Card Type: ID (IC Optional)
- Face Capacity: 1000
- Communication: USB, R485, TCP/IP
- Voltage: DC12V
- Wiegand out: Wiegand 26&34

TM1100 >>
180*130*38mm



<< TM1800
160*130*30mm



Standalone Self-service Time Attendance

- Display: 2.4 inch
- Card Type: ID Optional
- Fingerprint capacity: 1000
- User capacity: 1000
- Record capacity: 100,000
- Communication: USB
- Voltage: DC5V / 2A

TFS303 >>
145*80*30mm



Working with master machine TFS30 only
User Capacity: 500

TFS30 >>
190*80*33mm



<< TFS70
185*64*47mm



TCP/IP Fingerprint Access Control

- Card Type: ID (IC Optional)
- Fingerprint capacity: 3000
- User capacity: 3000
- Data capacity: 100,000
- Communication: USB, R485, TCP/IP
- Voltage: DC12V / 1A

Standalone Self-service Time Attendance

- Display: 2.8 inch
- Card Type: ID Optional
- Fingerprint capacity: 1000
- User capacity: 1000
- Record capacity: 100,000
- Communication: USB
- Voltage: DC5V / 2A

TM8000 >>
170*130*30mm



<< TM2800
160*130*30mm



TCP/IP Biometric Time Attendance

- Display: 2.8 inch
- Card Type: ID/IC Optional
- Fingerprint capacity: 3000
- User capacity: 1000
- Record capacity: 100,000
- Communication: USB, R485, TCP/IP, U Disk
- Voltage: DC5V / 2A

TM52 >>
187*131*42mm



<< TM60
187*137*50mm



TFS28 >>
105*105*30mm



TCP/IP Fingerprint Access Control

- Display: 2.8 inch
- Card Type: ID (IC Optional)
- Fingerprint capacity: 3000
- User capacity: 3000
- Data capacity: 100,000
- Communication: USB, R485, TCP/IP
- Voltage: DC9V / 1A



Bluetooth Access Control



<< K2F²
Fingerprint TTLOCK Lock Intelligent Waterproof Access Control Machine
 1. Size: 79x125x19mm
 2. Material: Aluminum alloy frame
 3. Way of communication: Bluetooth 5.0



<< K2²
IP66 Intelligent Waterproof TTLOCK Lock Access Control
 1. Size: 79x125x19mm
 2. Material: Aluminum alloy frame
 3. Way of communication: Bluetooth 5.0



<< K5
Facial Standalone TTLock App
 1. Size: 79x145x19mm
 2. Material: Aluminum alloy frame
 3. Face capacity: 100
 4. Card capacity: 1000



<< K5F
Access Controller
 1. Size: 79x145x19mm
 2. Material: Aluminum alloy frame
 3. Face capacity: 100
 4. Card capacity: 1000
 5. Fingerprint capacity: 100



H1-BT



K3-BT



K3F-BT



G2

Model No.	H1-BT	K3-BT	K3F-BT	G2
Dimension	145 x 68 x 25mm	125 x 79 x 15.5mm	125 x 79 x 15.5mm	70 x 70 x 26mm
Card Type	EM	EM	EM	WiFi 2.4G
User Capacity	1,000 users	20,000 card	20,000 card	IEEE standard: 802.11 b/g/n
Voltage	DC12V	DC12V	DC12V	DC 5V/500mA
Wiegand 26	Output & Input	Output & Input	Output & Input	Power interface: Type-C

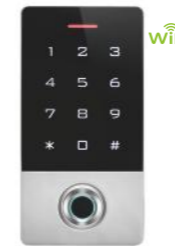


<< TUYA-DS
Tuya WiFi Garage Door Sensor
 1. Door and window switch, mobile App remote notification.
 2. Query history.
 3. WIFI: 2.4G can be connected to router or mobile phone hotspot.



<< WG-088
WiFi Garage Door Opener Controller
 1. Power: DC 220V
 2. Wireless Type: Only 2.4GHz, not support
 3. Mobile Phone: "Tuya/Smart Life" for Android & IOS

WiFi Access Controller



Tf1 WiFi



T12 WiFi



K33 WiFi



K35 WiFi

Model No.	TF1 WiFi	T12 WiFi	K33 WiFi	K35 WiFi
Dimension	139 x 70 x 20mm	117 x 71 x 22mm	111 x 46 x 22mm	119 x 49 x 19mm
Card Type	EM or MF	EM or MF	EM	EM
User Capacity	10000 users	2,000 users	10000 users	1000 users
Voltage	DC12V	DC12V	DC12V	DC12V
Wiegand 26	Output & Input	Output & Input	Output & Input	Output & Input

Fingerprint Smart Door Lock



<< iLock-05 (Ttlock)
Fingerprint Smart Door Lock

1. Fingerprint storage capacity: 100 (pieces)
2. Unlock times: >100,000 (times)
3. Scan time: <0.5(s)



<< iLock-05
Fingerprint Smart Door Lock

1. Fingerprint storage capacity: 100 (pieces)
2. Unlock times: >100,000 (times)
3. Scan time: <0.5(s)



<< iLock-05R (Ttlock)
Fingerprint Smart Door Lock

1. Fingerprint storage capacity: 100 (pieces)
2. Unlock times: >100,000 (times)
3. Scan time: <0.5(s)



<< iLock-05R
Fingerprint Smart Door Lock

1. Fingerprint storage capacity: 100 (pieces)
2. Unlock times: >100,000 (times)
3. Scan time: <0.5(s)

WiFi Access Controller



WiFi
 << G1

WiFi Access Controller

1. Voltage: (5-24V voltage)
2. Installation Environment: With WiFi
3. Support IOS and Android phone
4. Support open door: WiFi/2G/3G/4G

Wireless Access Control



>> SK7

- Single Door Wireless Access Kit
1. User Capacity: 600 PIN / card users
 2. Communication Frequency: 433MHz
 3. Mini Controller: DC12V
 Wireless Keypad: 3 units of AAA batteries
 Wireless Exit Button: 2032 Lithium battery



FINGERPRINT STANDALONE ACCESS CONTROL

Read 125KHz EM / HID Card / 13.56MHz Mifare / CPU Card (Factory default: EM 125KHz)
 Contains card reader mode. The transmission format could be adjusted by user.
 User capacity: 10,000 users



Standalone Fingerprint Access Controller



TF1



TF2

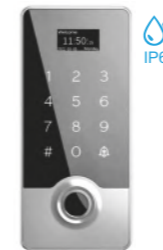


TF4



TF5

Model No.	TF1	TF2	TF4	TF5
Dimension	139 x 56 x 20mm	135 x 47 x 23mm	140x70x23mm	142x75x20mm
Card Type	EM or MF	EM or MF	EM or MF	EM or MF
User Capacity	10,000 users	10,000 users	10,000 users	100 users
Voltage	DC12V	DC12V	DC12V	DC12V
Wiegand 26	Output & Input	Output & Input	Output & Input	Output & Input



TF1-OLED



TF1000



KF1



KF5

Model No.	TF1-OLED	TF1000	KF1	KF5
Dimension	70x22x152mm	115x73x18mm	152 x 60 x 24mm	129 x 56 x 22mm
Card Type	x	x	EM or MF	EM or MF
User Capacity	3000 users	500 users	10,000 users	10,000 users
Voltage	DC12V	DC12V-18V	DC12V	DC12V
Wiegand 26	Output & Input	Output & Input	Output & Input	Output & Input



SF2



SF5

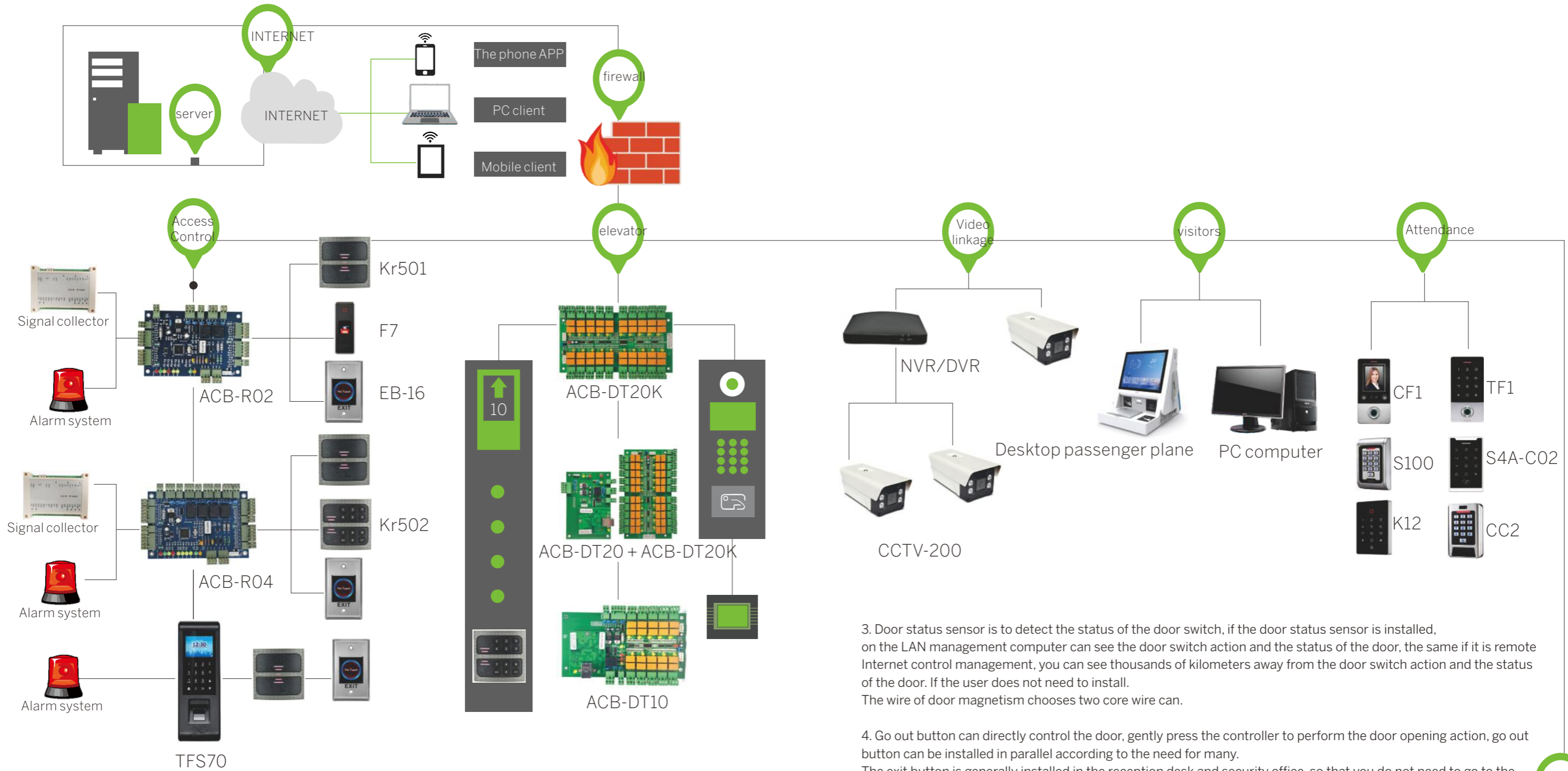


F1



F3

Model No.	SF2	SF5	F1	F3
Dimension	137 x 58 x 26mm	135 x 55 x 25mm	110 x 75 x 30mm	126 x 61 x 34mm
Card Type	Pincode+Finger	Pincode+Finger	EM	EM
User Capacity	1000Finger 2000Pin	100Finger 890card	300Finger 10,000card	200 Finger 500card
Voltage	DC12V	DC12V	DC12V	DC12V
Wiegand 26	Output & Input	x	Output & Input	Output & Input



1. The schematic diagram is the schematic diagram of the structure of the control point of a door. An AC220V socket should be left near each door as an electrical outlet. It is also necessary to deploy an 8-core super class 5 cable (common computer network cable) to the nearest LAN switch or HUB as the network cable. These two tasks must be done. If the intelligent access control management system adopts 485 LAN networking mode, it needs to use twisted-pair shielded wire to ensure the communication stability of the system; If the intelligent access control management system uses TCP/IP communication mode, use super class 5 network cables to ensure normal communication of the system.

2. For the place where the power is often cut off, you can distribute the battery. The capacity of the battery determines the length of time after the break point.

3. Door status sensor is to detect the status of the door switch, if the door status sensor is installed, on the LAN management computer can see the door switch action and the status of the door, the same if it is remote Internet control management, you can see thousands of kilometers away from the door switch action and the status of the door. If the user does not need to install. The wire of door magnetism chooses two core wire can.

4. Go out button can directly control the door, gently press the controller to perform the door opening action, go out button can be installed in parallel according to the need for many. The exit button is generally installed in the reception desk and security office, so that you do not need to go to the door to open the door for guests. If the user does not need to install. The wire that goes out button chooses two core wires can.



F4



F6 Metal Case



F7 Plastic Case



F601

Model No.	F4	F6 Metal Case	F7 Plastic Case	F601
Dimension	116 x 76 x 34mm	110 x 45 x 20mm	110 x 45 x 28mm	118 x 56 x 22mm
Card Type	EM	EM	EM	EM & MF
User Capacity	200 Finger 500card	200Finger 500card	200Finger 500card	300Finger 10,000card
Voltage	DC12V	DC12V	DC12V	DC12V
Wiegand 26	Output & Input	Output & Input	Output & Input	Output & Input



F3K



F605



F602



S4A-F18

Model No.	F3K	F605	F602	S4A-F18
Dimension	150 x 66 x 25mm	118 x 45 x 27mm	115 x 57 x 22mm	170 x 76 x 20mm
Card Type	Pincode+Finger	EM & MF	EM & MF	EM
User Capacity	500Finger	300Finger 10,000card	300Finger 10,000card	2000 Users
Voltage	DC12V	DC12V	DC12V	DC12V
Wiegand 26	Output	Output & Input	Output & Input	Output & Input



SA-D1



SA-X6



SA-86

Model No.	SA-D1	SA-X6	SA-86
Dimension	88 x 88 x 30mm	87 x 87 x 25mm	86 x 86 x 26mm
Card Type	Finger+RFID+Pincode	Finger+RFID+Pincode	EM or MF
User Capacity	500 Finger	500 Finger	500 Finger
Voltage	DC12V	DC12V	DC12V
Wiegand 26	Output & Input	x	x

Metal Standalone Access Controller



7612



7612-Cover-24V



7612-24V



S100

Model No.	7612	7612-Cover-24V	7612-24V	S100
Dimension	120 x 56 x 18mm	120 x 76 x 40mm	120 x 76 x 28mm	120 x 80 x 25mm
Card Type	EM	EM or MF	EM or MF	EM or MF
User Capacity	2000 users	10000 cards	10000 cards	2000 users
Voltage	DC12V	DC24V	DC24V	DC12V
Wiegand 26	Output & Input	Output & Input	Output & Input	Output & Input



S500



S600



S601 Metal Keypad



S601 Silicon Keypad

Model No.	S500	S600	S601 Metal Keypad	S601 Silicon Keypad
Dimension	120 x 80 x 25mm	120 x 56 x 20mm	120 x 56 x 18mm	120 x 56 x 18mm
Card Type	EM or MF	EM or MF	EM or MF	EM
User Capacity	2000 users	2000 users	2000 users	2000 users
Voltage	DC12V	DC12V	DC12V	DC12V
Wiegand 26	Output & Input	Output & Input	Output & Input	Output & Input



S602 Metal Keypad



S602 Silicon Keypad



S603 Metal Keypad



S603 Silicon Keypad

Model No.	S602 Metal Keypad	S602 Silicon Keypad	S603 Metal Keypad	S603 Silicon Keypad
Dimension	118 x 56 x 20mm	118 x 56 x 20mm	123 x 58 x 20mm	123 x 58 x 20mm
Card Type	EM or MF	EM	EM or MF	EM
User Capacity	2000 users	2000 users	2000 users	2000 users
Voltage	DC12V	DC12V	DC12V	DC12V
Wiegand 26	Output & Input	Output & Input	Output & Input	Output & Input



Touch-Screen Access Control



Model No.	K5	K6	K8	K9
Dimension	110 x 75 x 25mm	86 x 86 x 23mm	118 x 78 x 25mm	110 x 75 x 25mm
Card Type	EM or MF	EM or MF	EM or MF	EM
User Capacity	2000 users	2000 users	2000 users	2000 users
Voltage	DC12V	DC12V	DC12V	DC12V
Wiegand 26	Output & Input	Output & Input	Output & Input	Output & Input



Model No.	K10	K10-R	N1	M2	CC1
Dimension	110 x 75 x 25mm	136 x 56 x 25mm	150 x 43 x 25mm	115 x 56 x 22mm	145 x 58 x 22mm
Card Type	EM	EM	EM or MF	EM or EM+HID	EM or EM+HID or MF+CPU
User Capacity	2000 users	1000 users	2000 users	10000 users	2000 users
Voltage	DC12V	DC9-18V	DC12V	DC12V	DC12V
Wiegand 26	Output & Input	×	Output & Input	Output & Input	Output & Input



Model No.	CC1AS	CC2	CC3	H3	H4
Dimension	145 x 58 x 22mm	120 x 80 x 22mm	125 x 80 x 22mm	143 x 58 x 25mm	115 x 75 x 25mm
Card Type	EM+HID or MF+CPU	EM or EM+HID or MF+CPU	EM or EM+HID or MF+CPU	EM	EM
User Capacity	2000 users	2000 users	2000 users	2000 users	2000 users
Voltage	DC12V	DC12V	DC12V	DC12V	DC12V
Wiegand 26	×	Output & Input	Output & Input	Output & Input	Output & Input



Model No.	SA-TS20	SA-TS21	SA-TS21B	MT60
Dimension	120 x 78 x 22mm	125 x 84 x 23mm	125 x 84 x 23mm	115 x 75 x 23mm
Card Type	EM or MF	EM or MF	EM or MF	EM or MF
User Capacity	1000 users	1000 users	15000 users	10,000 users
Voltage	DC12V	DC12V	DC12V	DC12-24V
Wiegand 26	Output & Input	Output & Input	×	Output & Input



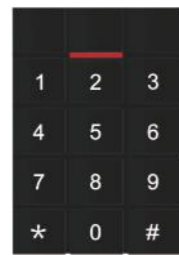
Model No.	SA-TS22	SA-TS24A	SA-TS24B	SA-TS25
Dimension	120 x 78 x 22mm	115 x 80 x 24mm	115 x 80 x 24mm	115 x 75 x 20mm
Card Type	EM or MF	EM	EM	EM or MF
User Capacity	1000 users	4000 users	4000 users	1000 users
Voltage	DC12V	DC12V	DC12V	DC12V
Wiegand 26	Output & Input	Output & Input	Output & Input	Output & Input



Model No.	T2DC	T12	T15	T9
Dimension	115 x 75 x 18mm	117 x 71 x 22mm	120 x 76 x 23mm	121 x 79 x 21mm
Card Type	EM	EM	EM	EM
User Capacity	2000 users	2000 users	2000 users	2000 users
Voltage	DC9-16V	DC12V	DC12V	DC12V
Wiegand 26	Output & Input	Output & Input	Output & Input	Output & Input



T10 Plastic



T11 Plastic



C800-B



T50

Model No.	T10 Plastic	T11 Plastic	C800-B	T50
Dimension	116 x 71 x 22mm	109 x 75 x 20mm	117 x 78 x 22mm	100 x 68 x 22mm
Card Type	EM	EM	MF	EM or MF
User Capacity	2000 users	2000 users	1000 users	2000 users
Voltage	DC12V	DC12V	DC12V	DC12V
Wiegand 26	Output & Input	Output & Input	Output & Input	Output & Input



C800-W



T8



SA-TS26



T2 T3 T4

Model No.	C800-W	T8	SA-TS26	T2 T3 T4
Dimension	106 x 95 x 22.5mm	86 x 86 x 20mm	140 x 45 x 17mm	155 x 45 x 20mm
Card Type	MF	EM or MF	EM or MF	EM
User Capacity	1000 users	2000 users	1000 users	2000 users
Voltage	DC12V	DC12V	DC12V	DC12V
Wiegand 26	Output & Input	Output & Input	Output & Input	Output & Input



T60



T1102



T1302



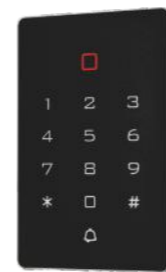
S4A-C02



T8A

Model No.	T60	T1102	T1302	S4A-C02	T8A
Dimension	115 x 75 x 23mm	119 x 73 x 23mm	118 x 81 x 21mm	115 x 70 x 20mm	140x70x17mm
Card Type	EM	EM	EM	EM	EM
User Capacity	2000 users	2000 user	2000 users	1000 users	2999 users
Voltage	DC12V	DC12V	DC12V	DC12V	DC12V
Wiegand 26	Output & Input	Output & Input	Output & Input	Output & Input	Output & Input

ABS Cheap Access Control



K12



A1



B1



SA-0109

Model No.	K12	A1	B1	SA-0109
Dimension	114 x 75 x 16mm	120 x 78 x 22mm	115 x 76 x 19mm	120 x 78 x 22mm
Card Type	EM	EM	EM	EM
User Capacity	2000 users	1000 users	1000 users	1000 users
Voltage	DC12-24V	DC12V	DC12V	DC12V
Wiegand 26	Output & Input	×	Output & Input	×



T5



T6



T1101



T1301



S4A-C03

Model No.	T5	T6	T1101	T1301	S4A-C03
Dimension	130 x 60 x 22mm	141 x 58 x 23mm	135 x 48 x 23mm	133 x 59 x 21mm	135 x 45 x 20mm
Card Type	EM or MF	EM	EM	EM	EM
User Capacity	2000 users	2000 users	2000 users	2000 users	1000 users
Voltage	DC12V	DC12V	DC12V	DC12V	DC12V
Wiegand 26	Output & Input	Output & Input	Output & Input	Output & Input	Output & Input



SA-0202



K30



K31

Model No.	SA-0202	K30	K31
Dimension	100 x 75 x 21mm	92 x 81 x 20mm	96 x 73 x 20mm
Card Type	EM	EM	EM
User Capacity	1000 users	2000 users	2000 users
Voltage	DC12V	DC12V	DC12V
Wiegand 26	×	Output & Input	Output & Input



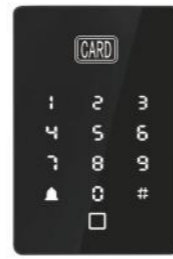
SA-0101



SA-0107



SA-W26



TF900

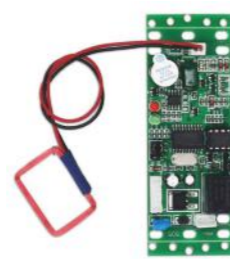
Model No.	SA-0101	SA-0107	SA-W26	TF900
Dimension	116 x 116 x 20mm	115x 75 x 21mm	115 x 75 x 18mm	114 x 74 x 18mm
Card Type	EM	EM	EM	EM or EM compatible
User Capacity	800 users	1000 card	15000 users	1000 users
Voltage	DC12V	DC12V	DC12V	DC12V
Wiegand 26	Output & Input	x	Output & Input	Output & Input



M3



M002



PCB-1



SA-150PRO

Model No.	M3	M002	PCB-1	SA-150PRO
Dimension	115 x 56 x 22mm	110 x 48 x 20mm	85 x 45 x 12mm	47 x 33mm
Card Type	EM or EM+HID	EM or MF	EM or MF	X
User Capacity	10000 card	10,000 card	2000 users	15,000 users
Voltage	DC12V	DC12-24V	DC12V	DC12V
Wiegand 26	Output & Input	Output & Input	x	x



>> Rainproof Housing

1. Function: Rainproof
 2. Outer size: 150 x 104 x 90mm
 3. Inner size: 135 x 89 x 84mm
- This Housing is compatible with F1, SA-TS20, SA-TS21, SA-TS22, SA-TS23, SA-0107, SA-0103, SA-0109, SA-0104, SA-0106



>> RH-02

1. Material: ABS
2. Waterproof: IP55
3. Function: Rainproof
4. Outer size: 1245x143x82mm
5. Inner size: 1230x130x40mm



>> M-200

1. Power supply DC12V
2. Output current of electric lock 3A(12V)
3. Maintain open time 1-10S adjustable
4. Time difference for unlocking and open door 0.5S

> Facial Access Control



<< S1000K



4.3-Inch Intelligent Face Recognition

- Face capacity:2000
- Card swiping capacity: 2000 cards
- User capacity:8000
- Communication method: U disk+TCP/IP+WiFi
- Display:4.3-inch LCD touch screen



<< S1000



Face recognition access control

- Display:4.3-inch LCD touch screen
- Face capacity:2000
- Card swiping capacity: 2000 cards
- User capacity:8000
- Communication method: U disk+TCP/IP+WiFi



<< V1



Facial Recognition Access Control

- User Capacity:3,000
- Face:1,000
- Card:3,000
- Log Capacity:200,000
- Operating Voltage:12V DC



<< V2



RFID Facial Recognition Access Control

- User Capacity:3,000
- Face:1,000
- Card:3,000
- Log Capacity:200,000
- Operating Voltage:12V DC



<<VF1



Facial Access Control

- Card reading type:ID, IC, NFC
- Working voltage:DC12V-24V
- User capacity:1000 cards, passwords; 200 fingerprints
- Overall dimensions: 145x70x25mm
- Video:Video intercom (Tuya APP)



<<VF2



Fingerprint Access Control System

- Card reading type:ID, IC, NFC
- Working voltage:DC12V-24V
- User capacity:1000 cards, passwords; 200 fingerprints
- Overall dimensions: 150x52x25mm
- Video:Video intercom (Tuya APP)



<<VF3



Video Intercom Access Control System

- Card reading type:ID, IC, NFC
- Working voltage:DC12V-24V
- User capacity:1000 cards, passwords; 200 fingerprints
- Video:Video intercom (Tuya APP)



Embedded Access Control



E39



EF39



Ek50



ER50

Model No.	E39	EF39	Ek50	ER50
Dimension	115 x 39 x 20mm	115x39x20mm	138x50x20mm	86x50x20mm
Card Type	EM or MF	EM or MF	EM or MF	EM or MF
User Capacity	10,000 users	10,000 users	2,000 users	x
Voltage	DC12	DC12V	DC12-24V (optional)	DC9-12V



E86



EF86



Ek86

Model No.	E86	EF86	Ek86
Dimension	86x86x20mm	86x86x20mm	86x86x20mm
Card Type	EM or MF	EM or MF	EM or MF
User Capacity	10,000 users	10,000 users	2,000 users
Voltage	DC12	DC12V	DC12-24V (optional)



E70



EF70



Ek70



ER86

Model No.	E70	EF70	Ek70	ER86
Dimension	115x70x20mm	115x70x20mm	115x70x20mm	86x86x20mm
Card Type	EM or MF	EM or MF	EM or MF	EM or MF
User Capacity	10,000 users	10,000 users	2,000 users	x
Voltage	DC12	DC12V	DC12-24V (optional)	DC9-12V

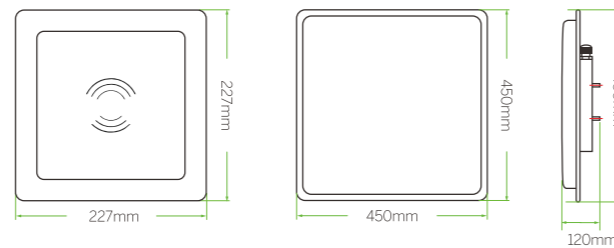




UHF-115 UHF-105

UHF 920-925MHz RFID Long range reader

Model No.	UHF-105	UHF-115
Reading Distance	1-5M	5-15M
Working Frequency	National standard (920~925MHz), America standard (902~928MHz), or customize other frequency	
Support Protocol	ISO18000-6B, ISO18000-6C(EPC GEN2)	
Interface	RS485, RS232, Wiegand26, Wiegand34, Rj45	
Working Voltage	DC 12V	
Dimension	227 x 227 x 60mm	450 x 450 x 120mm



UHF cards and Stickers



HOW TO USE?



UHF-05 USB
 UHF Card Issuing Device
 Connect USB data wire between Device and PC, after 30 seconds system testing period, then punch the UHF card;



PCD-EM-21D
 Middle distance Promixity Cards
 125KHz workable with PCD-110series.
 Reading distance up to 1M;



2502
 Pressure wave anti-smashing switch
 Work pressure:2- 5mpa
 Electrical properties:Up to 100mA/250VAC
 Rated voltage:5-250V



R02
 Channel Gate Anti-Collision Radar
 Input voltage:DC12V 150mA
 Working frequency:24-24.5GHz
 Modulation mode:FMCW



UHF-001
 1M UHF reader
 1. Card reading distance: 0~3M;
 2.Size: 121 x 78 x 22mm;



ITS-AX2
 79G Anti-Smashing Radar
 Input Voltage:10V ~ 16V
 Connection Interface:RS485/Bluetooth
 Size:107.5*73.2*18mm



PCD-130
 Middle Distance RFID Access Reader
 1. Size: 240 x 240 x 35mm
 2. Voltage: DC12-15V
 3. Reading Range: 70~100CM



PCD-110
 Middle Distance Promixity Card Reader
 1. Size: 230x230x35mm
 2. Voltage: DC5-16V
 3. Reading Range: 70~100cm



110B NEW
 Loop Detector
 1. Power Supply: AC220V/ 50Hz 4.5W
 2. Dimension: 112 x 73 x 38mm



PD-132 NEW
 Loop Detector
 1. Supply Voltage: 230V AC, 115V AC, 24V DC/AC, 12V DC/AC
 2. Dimension: 108 x 78 x 40mm



PD-232 NEW
 Loop Detector
 1. Supply Voltage: 230V AC, 115V AC, 24V DC/AC, 12V DC/AC
 2.Dimension: 108 x 78 x 40mm



PCD-120
 Middle Distance RFID Access Reader
 1. Size: 260 x 260 x 35 mm
 2. Voltage: DC5-16V
 3. Reading Range: 70~100CM



PD-220S
 Single-way vehicle detector
 Working power supply: AC 220V
 Sensitivity: Ten levels adjustable (0-9 levels)
 Detection channel: single



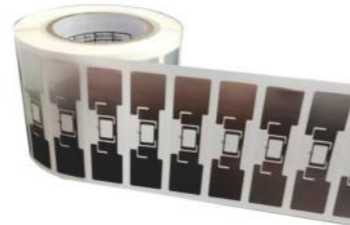
PD-220D
 Dual Vehicle Detector
 Working power supply: AC 220V
 Sensitivity: ten levels adjustable (0-9 levels)
 Detection channel: two-way (with direction recognition)



M750
UHF Inlays Tags Stickers
Chip: M750
Label size: 46x19mm
Reading distance: 6m



9954
UHF Inlays Tags Stickers
Chip: impinj-H9
Label size: 96x22mm
Reading distance: 15m



U9827
UHF Inlays Tags Stickers
Chip: U8
Label size: 98x27mm
Reading distance: 12m



E44(Dry Label)
UHF Inlays Tags Stickers
Chip: M4E
Antenna size: 6x105mm
Label size: 9x108mm
Reading distance: 8m



E44
UHF Inlays Tags Stickers
Chip: impinj-M4E
Label size: 108x9mm
Reading distance: 10m



C95U
UHF Inlays Tags Stickers
Chip: U8
Label size: 98x12mm
Reading distance: 10m



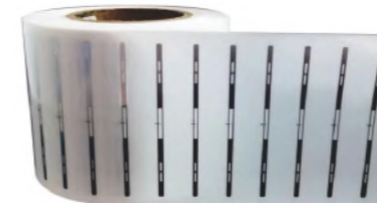
9662
UHF Inlays Tags Stickers
Size: 73*20mm
RF chip: U8
Recognition distance: 0-8 meters range



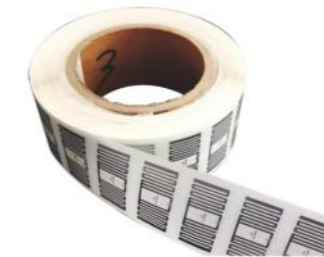
9920
UHF Inlays Tags Stickers
Chip: H9
Label size: 43x18mm
Reading distance: 6m



U5433
UHF Inlays Tags Stickers
Chip: U8
Label size: 54x33mm
Reading distance: 6m



L95
UHF Inlays Tags Stickers
Chip: impinj-U8
Label size: 105x5.5mm
Reading distance: 10m



N40
UHF Inlays Tags Stickers
Chip: G21L
Label size: 43x21mm
Reading distance: 5m



C90G
UHF Inlays Tags Stickers
Chip: impinj-M4QT
Label size: 97x22mm
Reading distance: 10m



U2715
UHF Inlays Tags Stickers
Chip: U8,U9
Antenna size: 24x12mm
Label size: 27x15mm
Reading distance: 3m



U3314
UHF Inlays Tags Stickers
Chip: U8,U9
Label size: 33x14mm
Reading distance: 3.5m



U4619
UHF Inlays Tags Stickers
Chip: U8/U9
Label size: 46x19mm
Reading distance: 0-5m



H47
UHF Inlays Tags Stickers
Chip: U8
Label size: 50x50mm
Reading distance: 7m



D68-3D
UHF Inlays Tags Stickers
Label size: 72x72mm
Reading distance: 1-30m



9654
UHF Inlays Tags Stickers
Chip: H9
Label size: 110x45mm
Reading distance: 0-12m



CB-93A
12V Cabinet lock
1. Fail-secure type
2. Voltage: DC12V 1.8A
3. Signal Output: No
4. Lock size: 73x58x13.3mm



CB-93B
12V Cabinet lock
1. Fail-secure type
2. Voltage: DC12V 1.8A
3. **Signal output with 4 wires**
4. Lock size: 73x58x13.3mm



CB-96
12V Cabinet lock
1. Fail-secure type
2. Voltage: DC12V 1.8A
3. Signal Output: No
4. Lock size: 73x58x13.3mm



CB-91-2A
12V Cabinet lock
1. Voltage: DC12V 2A
2. Power On: <5S (Don't recommend to power on all the time)
3. Tongue length: 10mm
4. **Tongue holding force: $\leq 3N(300G)$**
5. Working Mode: Power on- Open
Power off- Lock
6. Lock size: 55x23x28mm



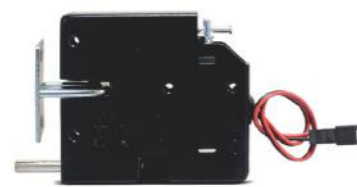
CB-91-12V / CB-91-24V
12V 24V Cabinet lock
1. Voltage: DC12V 0.4A(CB-91-12V)
DC24V 0.3A(CB-91-24V)
2. **Support Power on all the time**
3. Tongue length: 10mm
4. Tongue holding force: $\leq 0.5N(50G)$
5. Working Mode: Power on- Open
Power off- Lock
6. Lock size: 55x23x28mm



CB-91-PF
12V 24V Cabinet lock
1. Voltage: DC12V 0.3A
DC24V 0.2A
2. **Support Power on all the time**
3. Tongue length: 10mm
4. Tongue holding force: $\leq 0.5N(50G)$
5. **Fail-Safe Mode: Power on to Lock
Power off to Unlock**
6. Lock size: 55x23x28mm



CB-96S / CB-96B
12V 24V Cabinet lock
1. Fail-secure type
2. Voltage: DC12V 1.8A(CB-96S)
DC24V 1.5A(CB-96B)
3. **With Signal Output**
4. Lock size: 73x58x13.3mm



CB-96C
12V Cabinet lock
1. Fail-secure type
2. Voltage: DC12V 1.8A
3. Signal Output: No
4. Lock size: 73x58x13mm



CB-96D
12V Cabinet lock
1. Fail-secure type
2. Voltage: DC12V 1.8A
3. **With Signal output**
4. Lock size: 73x58x13mm



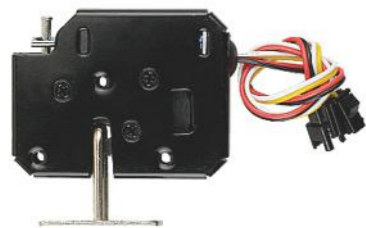
CB-91-L
12V Cabinet lock
1. Fail-Seure Mode
2. Voltage: DC12V 0.8A
3. Tongue length: 23mm
4. Lock size: 54x22x28mm



CB-90 / CB-90A / CB-90B
12V 24V Cabinet lock
1. Fail-Seure Mode
2. Voltage: DC12V 1.2A(CB-90 12V)
DC24V 1.2A(CB-90 24V)
DC12V 0.4A(CB-90A)
DC24V 0.3A(CB-90B)
3. CB-90A/B: **Support Power on all the time**
4. Tongue length: 7mm
5. Lock size: 54x23x28mm



CB-96D
12V 24V Cabinet lock
1. Fail-Seure Mode
2. Voltage: DC12V 0.3A(CB-90-C)
DC24V 0.2A(CB-90-D)
3. **Support Power on all the time**
4. Tongue length: 10mm
5. Tongue holding force: $\leq 0.5N(50G)$
6. **Fail-Safe Mode: Power on to Lock
Power off to Unlock**
7. Lock size: 54x23x28mm



CB-96M
12V Mini Cabinet lock
1. Voltage: DC12V 1.8A(CB-96S)
DC24V 1.5A(CB-96B)
2. **With Signal Output**
3. Lock size: 73x58x13.3mm



CB-91 / CB-91B
12V 24V Cabinet lock
1. Voltage: DC12V 0.8A(CB-91)
DC24V 1.2A(CB-91B)
2. Power On: <10S (Don't recommend to power on all the time)
3. Tongue length: 10mm
4. Tongue holding force: $\leq 1N(100G)$
5. Working Mode: Power on- Open
Power off- Lock
6. Lock size: 55x23x28mm



CB-91C
12V 24V Cabinet lock
1. Voltage: DC12V 0.8A
DC24V 1.2A
2. Power On: <10S (Don't recommend to power on all the time)
3. Tongue length: 10mm
4. Tongue holding force: $\leq 1N(100G)$
5. Working Mode: Power on- Open
Power off- Lock
6. Lock size: 55x23x28mm



CB-97-6V / CB-97-12V
12V Mini Cabinet lock
1. Voltage: DC6V 0.8A(CB-97-6V)
DC12V 0.4A(CB-97-12V)
2. Total Tongue Length: 4mm
3. Tongue holding force: $\leq 1N(100G)$
4. Power On: <3S
5. Lock size: 27x15x17.5mm



CB-98-12V
12V Mini Cabinet lock
1. Voltage: DC12V 0.4A
2. Total Tongue Length: 10mm
3. Tongue holding force: $\leq 1N(100G)$
4. Power On: <3S
5. Lock size: 27x15x17.5mm



CB-92
12V Cabint lock
1. Fail-secure type: Power to Open
2. Voltage: DC12V
3. Current: 1.5A
4. Suitable for: small cabinet
5. Dimension: 42x27x28mm



CB-94 ^{HOT}
Cabinet lock with battery
Work with 4pcs 7 alkaline batteries
1. Static current $\leq 5\mu\text{A}$
2. Transient current (Turn on lock) $\leq 250\text{mA}$
3. Work current for operating keypad: $\leq 20\text{mA}$
4. Use time: More than 100 thousand



CB-94 (ABS Housing)
Cabinet lock with battery
Work with 4pcs 7 alkaline batteries
1. Static current $\leq 5\mu\text{A}$
2. Transient current (Turn on lock) $\leq 250\text{mA}$
3. Work current for operating keypad: $\leq 20\text{mA}$
4. Use time: More than 100 thousand



CB-94RFID
RFID Card Cabinet Lock
1. Material: ABS plastic
2. Powered by: 4 AA high-quality alkaline batteries
3. Locking: Lock catch



CB-99
Invisible RFID Cabinet lock
1. Material: ABS
2. Color: Black
3. Unlock Way: RFID Card
4. Working Voltage: DC6V (4pcs AA batteries)
5. Lock Size: 76*76*29.5 mm



CB-99 Bluetooth
RFID Cabinet Locks with APP Ttlock
1. Material: ABS
2. Color: Black
3. Unlock Way: RFID Card
4. Working Voltage: DC6V (4pcs AA batteries)
5. Lock Size: 76*76*29.5 mm



EM172
Fingerprint Cabinet Lock
1. USB charge: 5V, Micro USB Port
2. Battery: Lithium battery
3. Material: Stainless steel
4. Fingerprint capacity: 20 pieces
5. Fingerprint reading speed: ≤ 0.5 second



CB-94B (ABS Housing)
Cabinet lock with battery
Work with 4pcs 7 alkaline batteries
1. Static current $\leq 5\mu\text{A}$
2. Transient current (Turn on lock) $\leq 250\text{mA}$
3. Work current for operating keypad: $\leq 20\text{mA}$
4. Use time: More than 100 thousand



CB-100
Universal RFID Card key sauna locker locks
Work with 4pcs 5 alkaline batteries
1. Card type: EM or MF Card
2. Optional color: Golden, Silver, Black
3. Dimensions: 114x53x15.5mm



iFinger
USB Fingerprint Identification lock
1. Function/ Main Use: Easiest and most security to login Windows 7 8 10 and Unlock your Word, Excel, Powerpoint file etc. with your fingerprint
2. Support: Microsoft Windows / Hello for Windows 7 8 10
3. Reaction Time: $\leq 0.15\text{s}$
4. Socket Type: USB 2.0



S4A K18
Fingerprint Cabinet Lock
1. Storage capacity: 10 pieces
2. Store the number of presses in a single time: 10 times
3. Sleep power consumption: Within 30mA



L25
Fingerprint Drawer Lock
1. Fingerprint capacity: 10 sets of fingerprints
2. Fingerprint settings: local settings
3. Charging interface: TYPE-C
4. Fingerprint collection time: ≈ 0.5 seconds
5. LED light display: Three-color light



L28
Fingerprint Cabinet Lock
1. Fingerprint capacity: 10 sets of fingerprints
2. Fingerprint settings: local settings
3. Charging interface: TYPE-C
4. Fingerprint collection time: ≈ 0.5 seconds
5. LED light display: Three-color light



CB-95A / CB-95B / CB-95C
6V 12V 24V Cabinet lock
1. Voltage: DC 6V 1.4A (CB-95A)
DC 12V 0.8A (CB-95B)
DC 24V 0.8A (CB-95C)
3. Lock tongue diameter: 6mm
4. Tongue holding force: $\leq 1\text{N}$ (100G)
5. Size: 30x13x15mm



CB-95D
24V Cabinet lock
1. Voltage: DC 12V 2.2A
3. Lock tongue diameter: 7mm
4. Tongue holding force: $\leq 1.5\text{N}$ (150G)
5. Size: 30x16x19mm



CB-97
Glass door lock by manual



L26
Fingerprint Biometric Cabinet Lock
1. Fingerprint capacity: 10 sets of fingerprints
2. Fingerprint settings: local settings
3. Charging interface: TYPE-C
4. Fingerprint collection time: ≈ 0.5 seconds
5. LED light display: Three-color light



Padlock



iLock

- Bluetooth Fingerprint Padlock
1. Unlock way: APP/Finger
 2. App name: Nodelock
 3. Material: Alloy Housing 303 stainless steel
 4. 5V 0.5A(Micro USB)
 5. Dimension: 75 x 48 x 16mm



iLock-M

- Fingerprint Padlock
1. Unlock way: Finger
 2. Material: Alloy Housing 303 stainless steel
 3. 5V 0.5A(Micro USB)
 4. Dimension: 75 x 48 x 16mm



U-Lock

- Fingerprint Bike Lock
- 1.Product material:Aluminum alloy
 - 2.Fingerprint capacity:32 pieces
 - 3.Password + card capacity:1000 groups in total
 - 4.Is it waterproof:Outdoor waterproof
 - 5.Emergency charging port:Type-C



S4A-P3

- Keyless Thumbprint Lock
- 1.Three-color light:Red, green and blue light identification
 - 2.Storage:10 sets of fingerprints; 2 sets for administrators
 - 3.Recharging current:5V/200MA



S4A-L3

- Biometric Fingerprint Padlock
1. Number of fingerprints:10 groups of fingerprints (the first two groups are administrator fingerprints)
 2. Unlock working current:180MA
 3. No motor working current:3MA



S4A-L3 TUYA

- Fingerprint Padlock
- 1.Number of fingerprints:10 groups of fingerprints (the first two groups are administrator fingerprints)
 - 2.Unlock working current:180MA
 - 3.No motor working current:3MA



S4A-P22

- Biometric Padlock
- 1.Number of fingerprints:10 groups of fingerprints (the first two groups are administrator fingerprints)
 - 2.Unlock working current:180MA
 - 3.No motor working current:3MA



S4A-P22 TUYA

- Keyless Fingerprint Padlock
1. Number of fingerprints:10 groups of fingerprints (the first two groups are administrator fingerprints)
 2. Unlock working current:180MA
 3. No motor working current:3MA



S4A-L34

- Fingerprint Padlock
1. Number of fingerprints:10 groups of fingerprints (the first two groups are administrator fingerprints)
 2. Unlock working current:180MA
 3. No motor working current:3MA



D10-BT

- Tuya Bluetooth Fingerprint Padlock With Pincode
1. Size:76x46x22mm
 2. Unlock Method: Password(6 digits), Mobile phone
 3. No.of password:10



D10

- Padlock Locker Lock
1. Size:76x46x22mm
 2. Unlock Method:Password (6 digits), Mobile phone
 3. No.of password:10



D11-BT

- Tuya Fingerprint Lock
1. Size:76x46x22mm
 2. Unlock Method: Fingerprint, Mobile phone
 3. No.of Fingerprint:10



D11

- Biometric Fingerprint Locker Lock
1. Size:76x46x22mm
 2. Unlock Method: Fingerprint, Mobile phone
 3. No.of Fingerprint:10



D12

- Keyless Padlock
- 1.Fingerprint Capacity:10
 - 2.Charging type:Micro-USB
 - 3.Emergency unlock:Mos code



S4A-L1

- Padlock With Fingerprint
1. Fingerprint capacity:10 groups of fingerprints (the first two groups are administrator fingerprints)
 2. Charging current:5V/180MA
 3. Recognition time:<0.5S



ES-100A / 100B
Standard-type Electric Strike Series
ES-100A: Fail-secure type
ES-100B: Fail-safe type
Lock Size: 150Lx39.5Wx28H(mm)
Bolt structure: Stainless Steel
Holding Strength: 800kg
Voltage: 12VDC
Current: 450mA(ES-100A)
200mA(ES-100B)



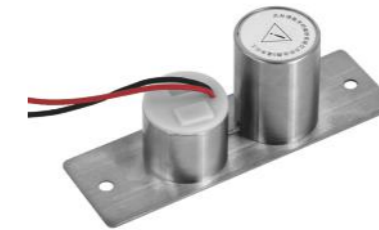
ES-110A / 110B
Long-type Electric Strike
ES-110A: Fail-secure type
ES-110B: Fail-safe type
Lock Size: 250Lx25Wx34H(mm)
Strike Structure: Stainless Steel
Holding Force: 400kg
Voltage: DC12V
Current: 240mA(ES-110A)
120mA(ES-110B)



ES-120A / 120B
ANSI standard Heavy Duty
Electric Strike Series
ES-120A 2wires: Fail-Secure & Fail-Safe
(default: Fail-safe)
ES-120B 5wires: With signal output
Lock Size: 124Lx43Wx32H(mm)
Bolt structure: Stainless Steel
Holding Strength: 400kg
Voltage: 12VDC
Current: 240mA



BD-106
Electric Bolt lock for Auto-door
1. Power supply: DC12-24V
2. Locking start current: 980mA
3. Quiescent Current: 200mA
4. Security type: Power on lock



BL-M3001
Mini Embedded bolt lock with 2 wires
1. Material: Stainless Steel
2. Working way: Power off, door is open
3. Voltage: DC12V
4. Starting current: 0.7A
5. lock body size: 125*38mm
6. Armature plate size: 93*26.5mm



BL-M3002
Mini Embedded bolt lock with 2 wires
1. Material: Stainless Steel
2. Working way: Power off, door is open
3. Voltage: DC12V
4. Starting current: 0.7A
5. Lock Dimension: 125*44.5*1.5mm



ES-130A / 130B
Narrow-type Electric Strike Series
ES-130A: Fail-secure type
ES-130B: Fail-safe type
Lock Size: 149Lx28Wx34H(mm)
Bolt structure: Stainless Steel
Holding Strength: 250kg
Voltage: 12VDC
Current: 240mA(ES-130A)
120mA(ES-130B)



ES-140A / 140B
Fail Safe Electric Strike is Suitable
for Glass Door
ES-140A: Fail-secure type
ES-140B: Fail-safe type
Lock Size: 149Lx28Wx31H(mm)
Strike Structure: Stainless Steel
Holding Force: 250kg
Voltage: DC12V
Current: 240mA(ES-140A)
120mA(ES-140B)



ES-150
European Narrow-type and Adjustable
Electric Strike
Lock Size: 110Lx25Wx31.5H(mm)
Strike Structure: Zinc die-casting
Holding Strength: 600kg
Voltage: DC12V
Current: 700mA
Special Design: Adjust Lock-tongue
to NO style



BL-C2001A
Electric bolt lock with 2 terminals
1. Face Plate: 200*34*42mm
2. Strike Plate: 90*25*3mm
3. Lock Cylinder: 15mm*15mm
4. Working Voltage: DC12V
5. Start working: 450mA



BL-N2000
Durable Narrow Electric Bolt Lock
1. Size of stainless steel bolt: 12.6mm;
2. Sticking-out length: 15mm
3. Size of magnet seat: 84*25mm



BL-2100A
Electric Bolt Lock specially for automatic
door(required bracket together)
1. Voltage: DC12V
2. Start Current: 900mA
3. Standby Current: 150mA
4. Face Plate: 205*35*41mm
5. Strike plate : 90*25*2mm
6. Signal Output: Door status Output,
NC/COM
8. Timer: 0/ 3/ 6/ 9 seconds



ES-160
European Narrow-type and Adjustable
Electric Strike
Lock Size: 250Lx25Wx27H(mm)
Strike Structure: Zinc die-casting
Holding Strength: 500kg
Voltage: DC12V
Current: 700mA
Special Design: Adjust Lock-tongue to
NO style
Face plate Housing: Surface by coating
nickel Surface by coating nickel and polishing
Suitable For: Narrow Wooden Door,
Narrow Metal Door



ES-140A / 140B
Fail Safe Electric Strike is Suitable
for Glass Door
ES-140A: Fail-secure type
ES-140B: Fail-safe type
Lock Size: 149Lx28Wx31H(mm)
Strike Structure: Stainless Steel
Holding Force: 250kg
Voltage: DC12V
Current: 240mA(ES-140A)
120mA(ES-140B)



BL-T10
Mortise Bolt Lock
Voltage:DC12V
Current:start state 1.1A continuous
state 0.09A
Security type:lock when power on,
unlock when power off



BL-2300 Fail-safe
Narrow Electric bolt lock / 5wires
1. Fail-safe(Power off,door is open)
2. Voltage: DC12V
3. Start Current: 1.3A, Working Current:
0.08A
4. Time delay: 0-6S adjustable
5. Lock size: 200*24*38mm



BL-2300B Fail-Secure
Narrow Electric bolt lock / 5wires
1. Fail-secure(Power off, door is locked)
2. Voltage: DC12V
3. Start Current: 1.3A, Working Current:
0.08A
4. Time delay: 0-6S adjustable
5. Lock size: 200*24*38mm



BL-3000
Electric Bolt Lock Hanging with Timer
1. Voltage: DC 12V or 24V
2. Start Current: 580mA
3. Standby Current: 200mA
4. Power on to lock
5. Lock body: 150*34*28mm
6. Weight: 0.6KG



BL-2800
Electric Bolt for Frameless Glass Door (5wires)
1. Timer: 0/ 3/6 seconds available to set
Open Left or Open Right (Choose One)



BL-2500A / 2500B
Dead Bolt Lock (power on to open)
BL-2500A: (power to open) N.C. door position output point
BL-2500B: (power to open) Door position detection and bolt position(N.C. & N.O.) output points



BL-2600B
Dead Bolt Lock (all purpose type)
1. Door position detection and bolt position(N.C. & N.O.) output points
2. Power Supply: DC12V:Operation



BK-08A
Small Stainless Steel Bracket for Electric Bolt Lock
Standard Structure: Stainless steel, Wire Drawing Finished
Suitable for Door: specially for glass Door frameless below Size: 93*47*38mm



BK-08B
Aluminum material Bracket for frameless glass door
Standard Structure: Aluminum material
Suitable for Door: specially for glass door frameless below Glass Thickness: 10-15mm



BK-08C
Stainless Steel Bracket for Electric Bolt Lock
Standard Structure: Stainless steel, Wire Drawing Finished Size: 202*38.5*46mm
Suitable for Door: glass door Glass Thickness: 10-15mm



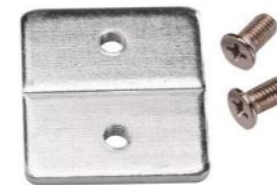
BL-2400
Positioning Smart Electric Mortise Lock
1. Lock body size:200x28x50.5mm
2. Lock tongue size:protruding length 21mm, width 30mm
3. Embedded size:145x26.5x48mm



BL-2400
Fail Secure Electric Bolt With Mort Lock Cylinder
1. Face Plate: 260*30*48mm
2. Strike plate : 100*25*3mm
3. Bolt :16mm DIA, stainless steel 16mm throw



BL-2700A / 2700B
Electric Bolt With Magnetic feature
BL-2700A: (Fail-Secure)
BL-2700B: (Fail-Safe)
1. Face Plate: 200*28*38mm
2. Strike plate: 90*24*3mm
3. Autolock Time Delay: 0,3,6,9sec.



Extension plate
Bolt Lock Extension Plate
1. Size: 36X33X3mm
2. Material: iron (white zinc plated)



BL-C20001B
2 wires Electric Bolt Lock with Low Temperature and Timer
1. Face Plate: 205*35*40mm
2. Strike plate : 90*25*2mm
3. Current: 130mA Timer: 0/3/6/9



BL-C2001D
5 wires Electric Bolt Lock With door statedetection output point and Timer
Signal Output: door open or door close state detection output point, NC/COM



BL-2900
LED Indicator Electric Mortise Lock
1. Working current: start 1.2A holding 0.2A
2. Working Voltage: DC12V/24V
3. Delay function: 0/3/6/9 delay can be selected

Electric RIM lock



IR-1208
Integrated access control IR-lock
1. Voltage: DC12V
2. Range: 0~15CM
3. Memory Size: 1000 cards



ER-M2 Double Cylinder Electric RIM Double Cylinder Iron Nickel-Plated High-Copy SS 304 Electric RIM lock
1. Lock Size: 148*107*60mm
2. Backset: 60mm



ER-M1 Single Cylinder Electric RIM Single Cylinder Iron Nickel-Plated High-Copy SS 304 Electric RIM lock
1. Lock Size: 148*107*60mm
2. Backset: 60mm



ER-S1 Single Cylinder
Electric RIM Single Cylinder
Stainless Steel 304 Electric RIM lock
1. Lock Size: 148*107*60mm
2. Backset: 60mm



ER-D2 Double Cylinder
Electric RIM Double Cylinder
Stainless Steel 304 Electric RIM lock
1. Lock Size: 148*107*60mm
2. Backset: 60mm



ER-D3
Electric RIM lock with Nickle plating
1. Double-separated brass cylinder
2. Working voltage: 12V DC
3. Door thicknesses: 35 to 50mm



ER-D4 Electric RIM Door Lock
Electric RIM Door Lock
1. Cylinder:Brass
2. Latch:Brass
3. Square Latch:Brass
4. Button:Iron(chrome-plating)
5. Key:5 pcs brass keys



ER-M6D-B Double head lock
Electronic Door Lock
1. Material: Iron+copper
2. Colour: Black
3. Unlock voltage: 12V
4. Weight: 1.3kg



ER-M4B Single head lock
Electric Control Lock
1. Material: Iron+copper
2. Colour: Matte Black
3. Unlock voltage: 12V
4. Weight: 1.3kg



ER-M3G Single head lock
Electric Control Lock
1. Material: Iron+copper
2. Colour: Matte gray
3. Unlock voltage: 12V
4. Weight: 1.3kg



ER-M5D-G Double head lock
Electric Rim Lock
1. Material: Iron+copper
2. Colour: Rose gold
3. Unlock voltage: 12V
4. Weight: 1.3kg



208CK
Access Control Power Supply
1. Input: AC110V-240V / 50Hz
2. Output: DC12V; NO/NC / 5A
3. Dimension: 212 x 172 x 70mm
3. Weight: 2kg



208CK-D
Uninterrupted Power Supply
1. Input: AC110V-240V / 50Hz
2. Output: DC12V; NO/NC / 5A
3. Dimension: 212 x 172 x 70mm
3. Weight: 2kg



PS-500 (3A or 5A)
Door Access Control Power Supply
1. Power input:AC220V~ 50Hz
2. Power output:DC12V 3A&5A optional
3. Working principle:Normally open and closed corner



PSB-300
Uninterrupted Power Supply
1. Input: AC180-235V / 50Hz
2. Output: DC12V / 5A
3. Dimension: 213 x 168 x 70mm
3. Weight: 1.78kg



PSB-300B NEW
Uninterrupted Power Supply
1. Input: AC110-240V / 50-60Hz
2. Output: DC12V / 5A
3. Dimension: 211 x 165 x 70mm
3. Weight: 1.04kg



12V1600W NEW
Large Access Power supply
1. Input: AC85V-265V / 47Hz-65Hz
2. Output: DC12V / 1.15A-1.4A
3. Dimension: 770 x 920 x 170mm
3. Weight: 10kg
4. 12V 1600W Access Power Supply,
Maximum support 24pcs ACB board



PSB-200
Access Control Power Supply
1. Input: AC180-235V / 50Hz
2. Output: DC12V; NO/NC / 5A
3. Dimension: 183 x 87 x 60mm
3. Weight: 1.32kg



1210A/1230A
Switching Power Supply
1210A:
12V 10A 120W
Dimension: 160*98*42mm
1230A:
12V 30A 360W
Dimension: 215*110*50mm



208K NEW
Switching Power Supply
1. Input: AC110V-240V / 50Hz-60Hz
2. Output: DC12V / 5A
3. Dimension: 132 x 74 x 39mm
3. Weight: 0.4kg



12V 3A Power Supply Access Control System



K80
Switching Power Supply
1. Input: AC110V-240V / 50Hz-60Hz
2. Output: DC12V / 3A
3. Dimension: 104 x 69 x 33mm
3. Weight: 0.32kg



K90
Switching Power Supply
1. Input: AC110V-240V / 50Hz-60Hz
2. Output: DC11.5V-13.5V / 5A
3. Dimension: 140 x 95 x 38mm
3. Weight: 0.42kg



K10 NEW
Switching Power Supply
1. Input voltage:100V-240V AC
2. Instantaneous current:5A
3. Dimension: 124 x 69 x 38mm



ACB-PS08
Power Supply for Access Control Board
1. Input: AC180-235V / 50Hz
2. Output: DC9V-16V / 5A
3. Dimension: 277 x 233 x 66mm
3. Weight: 2.68kg



ACB-PS08A
Power Supply for Access Control Board
1. Input: AC180-235V / 50Hz
2. Output: DC9V-16V / 5A
3. Dimension: 374 x 264 x 67mm
3. Weight: 3.28kg



PS-6610
Wide Voltage Power Supply
1. Input: AC110-260V / 50Hz-60Hz
2. Output: DC13.5V / 10A
3. Dimension: 232 x 277x 67mm
3. Weight: 1.7kg



PS-6653
Wide Voltage Power Supply
1. Input: AC110-240V / 50Hz-60Hz
2. Output: DC9V-16V / 5A
3. Dimension: 277 x 232 x 66mm
3. Weight: 1.66kg



PS-6653B
Wide Voltage Power Supply
1. Input: AC110-240V / 50Hz-60Hz
2. Output: DC9V-16V / 5A
3. Dimension: 371 x 266 x 66mm
3. Weight: 2.04kg



PSB-400
Storage Battery
Working together with backup power supply, Voltage 12V/7A



PSW-01 NEW
Electronic LED Driver
1. Input: AC90V-250V / 50Hz-60Hz
2. Dimension: 145 x 51 x 32mm
3. Weight: 0.36kg



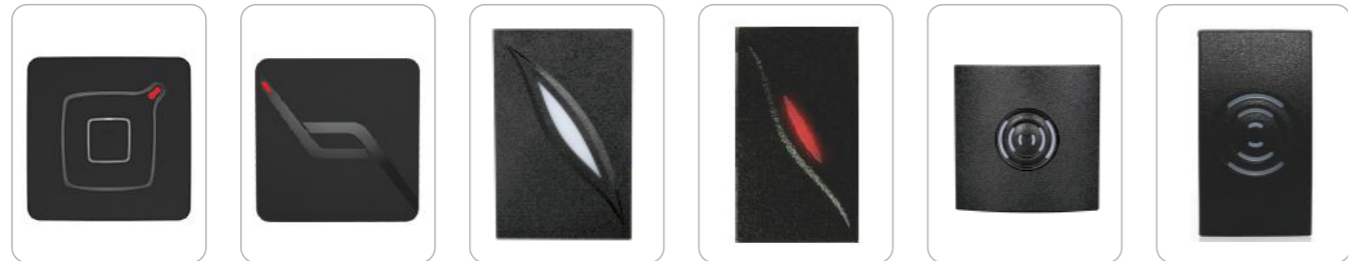
S4A-12V8A
Access Power Supply
1. S4A Model:S4A-12V8A
2. input power:AC220V~50HZ
3. Dimension:191*53*40mm



K60
Access Power Supply
1. Input voltage:220V AC
2. Frequency range:50Hz~60HZ
3. Power factor:>0.5



WR1-B 120x50x20mm
WK1 134x55x20mm
U-P001 110x48x21mm
U-P002 110x48x21mm
U-P003 110x48x21mm
U-P004 86x86x19mm



U-P005 86x86x19mm
U-P006 86x86x19mm
KR100 115x75x18mm
KR101 43x77x17mm
KR200 86x86x18mm
KR201 84.5x44x16.8mm



KR501 86x86x16mm
KR503 116x75x16mm
KR600 116x75x16mm
KR601 86x86x16mm
PCD-94 100x46x20mm
PCD-96 80x43x16mm



PCD-96A 80x43x16mm
PCD-100A 76x114x16mm
PCD-100A 76x115x16mm

PCD-100A Output (You can choose any output way)	ID RS485(initiative)	ID RS485(passive)
	IC RS485(initiative)	IC RS485(passive)
	ID Rs232	IC Rs232



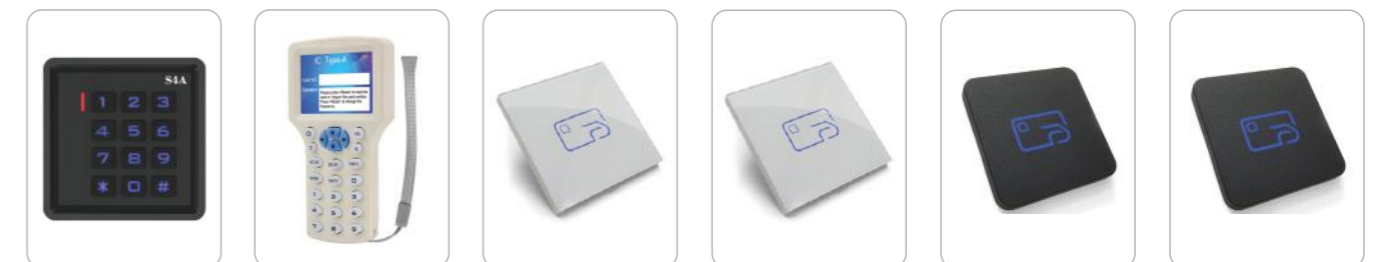
PCD-101 122x46x23mm
PCD-102 124x76x23.5mm
PCD-104 126x76x23mm
PCD-124 98.2x42.4x17mm
RF002 110x50x18mm
RF003 110x86x18mm



U-M001 105x50x20mm
U-M002 110x48x20mm
RF006 120x56x18mm
RF007 120x80x25mm
PCD-86 92x92x21mm
PCD-87 92x92x21mm



PCD-103 109x88.4x34mm
KR102 86x86x35mm
KR202 86x86x18mm
KR502 86x86x28mm
KR602 86x86x20mm
Rt8 86x86x20mm



R6 86x86x20mm
Copier 152x80x21mm
PCD-01 86x86x8mm
PCD-01NFC 86x86x8mm
PCD-02 86x86x8mm
PCD-02NFC 86x86x8mm



MCI-109 USB card issuing device
PCD-122 USB card issuing device
iButton-EM 45x25mm
iButton-MF 26x22mm
QR-86 86x86x42mm
BT-86 86x86x18mm



PCD-96HID 84x42x18mm
PCD-97HID 103x48x22mm
PCD-98HID 84x84x21mm
PCD-96B-HID 112x84mm
CPU-1208 86x86x18mm
CPU-1208K 86x86x18mm



ED100

Automatic Swing Door Operator (Include 1pcs Microwave Sensor)

Power supply	110V or 220V	Protection level	IP12D
Opening time	3-7s / 90°	Dimensions	516x105x82mm
Opening and holding time	1-30s	Packing box	626x197x152mm
Temperature	-20°C-55°C	Weight	8.5kg



Microwave Sensor
M-204T



Remote controller



Kits

Brushless DC motor

Sealed structure, durable and no oil leakage, small size, direct power brushless motor, internal safety protection circuit device, even if it is frequently opened and closed, it can run without problems for a long time

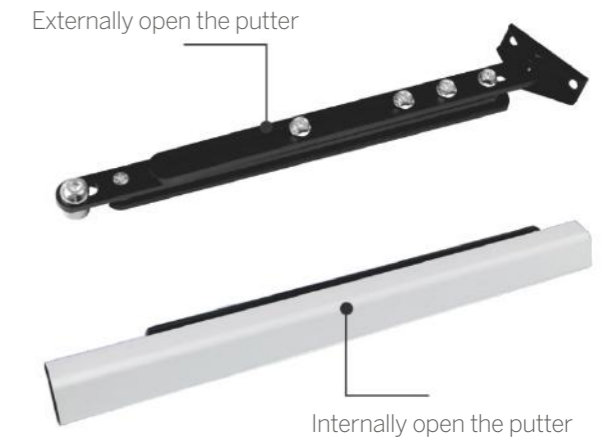


ED400

Automatic Swing Door Opener With Push & Go Function

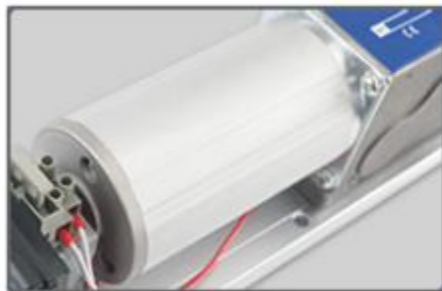
Voltage	110 ~ 220V
Opening time	3-7s/90
Hold open time	1- 30s adjustable
Dimension	540x95x82mm

Product description



How electric door closers work

Dooropensignal—controlunlock—dooropen—braketostopdoor—dooropenhold—buffer—doorlock



ABS material casting molding
good sealing, high protection level



Thickened steel casting shaft
Internal use of steel balls and bearings
Robust and flexible



Copper coil transformer, high power
stable job



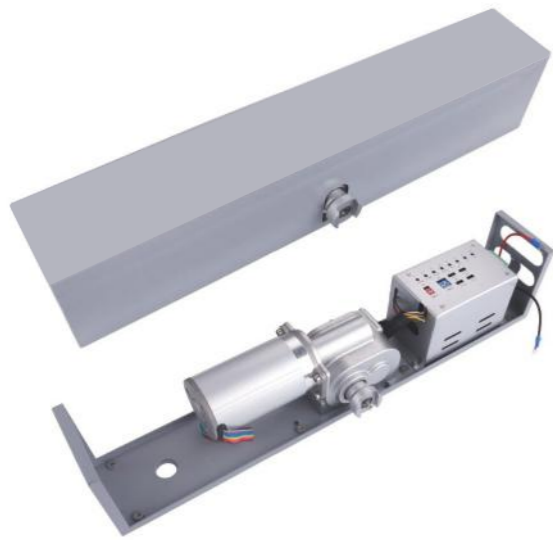
Extender-2, Extender-7
Automatic Door opener extender
Extender-2: 31x30mm
Extender-7: 80x30mm



M-236E
Automatic door back-up power with lithium battery
1. Input Voltage: AC220V 50Hz
2. Output Voltage: DC24V 2.6AH;
DC12V 5.2AH
3. Working Mode: Automatic working or keep opening
4. Dimension: 243x59x45mm



M-227A, M-227B
Moving Safety Curtain
Sensor for revolving door M-227A
Motion light curtain sensor M-227B
1. Operation voltage: AC/DC12-36V
2. Dimension: 620x39x37mm
750x39x37mm
900x39x37mm
1200x39x37mm



ED200
150KG Automatic Swing Door Opener

Applicable swing doors	Swing door of various materials
Door width	1200mm
Door weight	150kg

Available in Two Colors



ED300
300KG Push Button Swing Door Opener

Applicable swing doors	Swing door of various materials
Door width	1500mm
Door weight	300kg



Five Modes To Choose



- Auto mode: In this mode, all signals are used normally.
- Fully open mode: In this mode, the door remains normally open but not closed.
- Full lock mode: In this mode, all external signals are invalid, and the door remains normally closed. If an external lock is attached, lock the door. (Note: the remote control works)
- Pet mode: In this mode, only the pet sensor works, and the door is opened to the pet's opening width; how to set the pet's opening width, see "Learning Process".
- Manual mode: In this mode, the door can be manually opened to any position, and all external accessories are invalid.
- Function selection button



ED80

Hood



YS407
Wireless Hand Press Push Switch
1. Power supply: AC/DC 12V- 24V
2. Quiescent Current: 15mA
3. Operating current: 80mA
(when powered by DC12V)



Rack





SM150



Overload protection

The automatic door microcomputer controller receives the detection signal of the sensor or other switches, and is used to drive the motor to control the door body to move in a suitable way. The controller itself comes with 12V, 24V power supply, no need to use a transformer. Added security protection light, access control, external electric lock, backup power supply, double-door interlock and other ports, which are convenient for customers to use according to actual needs.



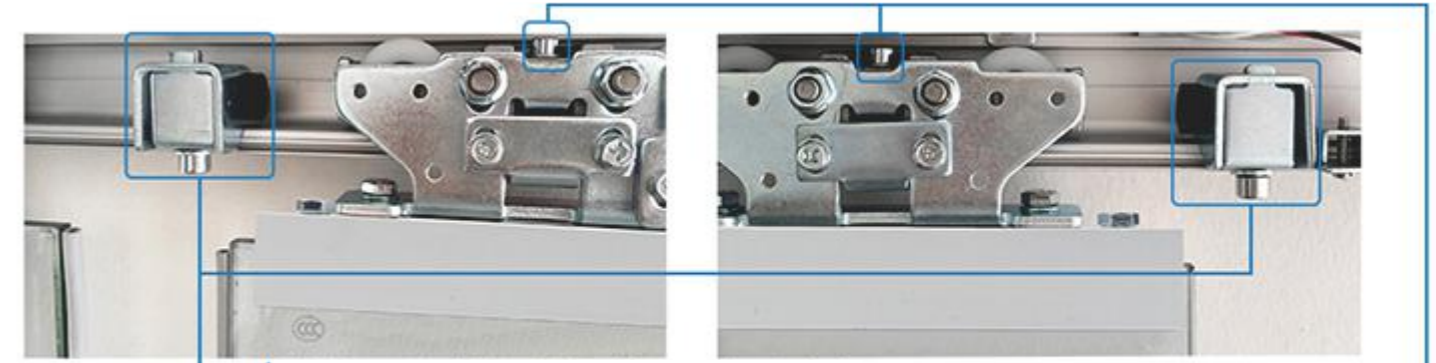
- A: Direction Control
- B: Channel Adjustment
- D: Opening Speed
- E: Slow Movement Distance in Door Opening

- F: Closing Speed
- G: Slow Movement Distance in Door Closing
- H: Slow Movement Speed
- I: Open Time

Remark

The A switch is to switch the direction of the left-open/right-open glass door (usually used in the case of a single door)
The B switch is a jog switch! That is, it senses the door to open, and then senses the door to close.

Stop



Set the position of closing the door and opening the door, and then fix the 2 stoppers
In this way, the door switch will be fixed to the adjusted position.
By adjusting the tightness of the screws, the height of the door can be raised or lowered

Tail wheel



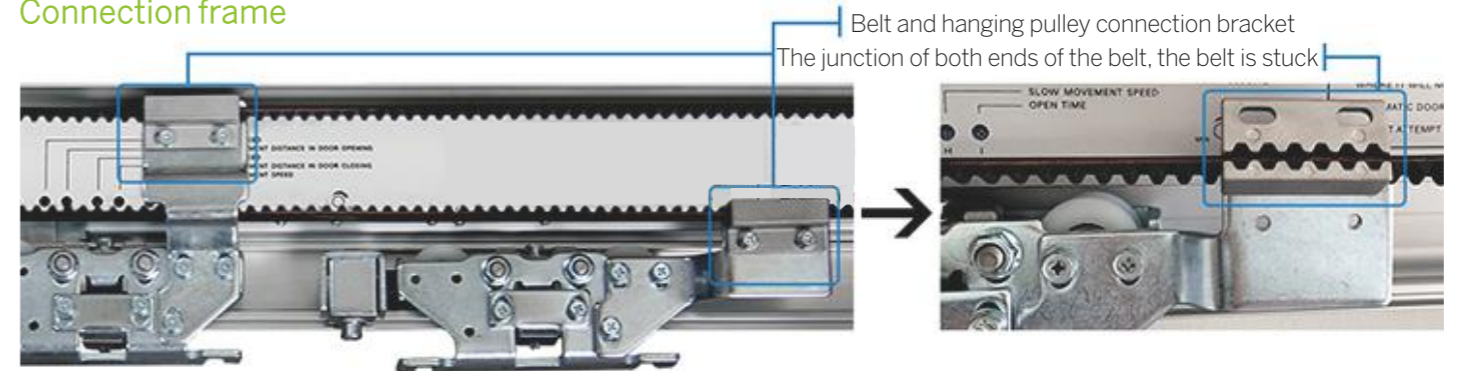
Adjustable belt tension by tightening the screw



Anti-release device

After the door is hung, install the anti-release device, and leave 2-3mm space between the anti-release device and the track, so as to prevent the door from derailing.

Connection frame



Belt and hanging pulley connection bracket
The junction of both ends of the belt, the belt is stuck



3200
Automatic Door Backup Power UPS Battery
1. Battery capacity: 3200mA
2. Input voltage: 220V
3. The output voltage: DC24V 3.2AH



SM170
Automatic Sliding Door Opener
1. Single opening: 300KG
2. Double opening: 2*250KG
3. Net opening width: 1-2.8 meters
4. Closing force: > 100 newtons
5. Operating Voltage: AC 220Vff10%
6. Power: 50-60Hz



SM160
Automatic Door Sliding System
1. Single door load-bearing: 200KG
2. Double door load capacity: 150KG*2
3. Door opening and closing speed: 15-45cm/s
4. Rated power: 80W
5. Unit depth: 95mm



S4A- Sliding Door Tooth Belt
Sliding Door Tooth Belt
1. Drive belt type: Toothed belt
2. Tooth spacing: 8mm
3. Bandwidth: 12 mm



S4A-DC Motor
Automatic Door Backup Power UPS Battery
Controller: High-speed intelligent computer processor control
Opening hours: Within the range of 1-10 seconds after opening the door (adjustable)
Portal form: Single door: 250kgX1 door
Double door: 150kgx2 doors



S4A-hanging wheel
Automatic Door Crane Wheel Spreader Hanger
1. Roduct specifications: 150x60x35mm
2. External materials: Galvanized cast iron
3. Internal materials: High quality polyester, aluminum alloy bearings

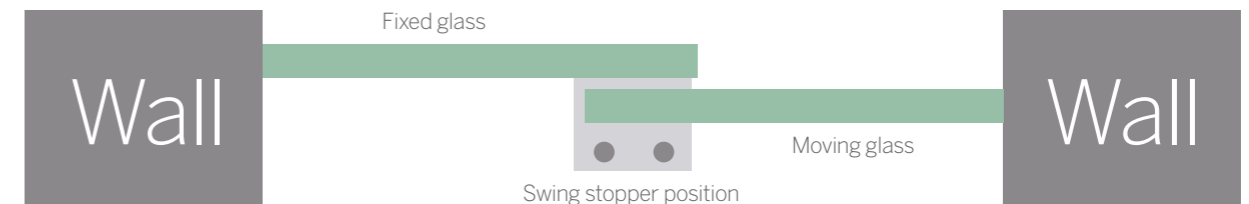


S4A-Door belt brackets
Sliding Door Belt Brackets
1. Quantity: 2 pieces (one upper connector + one lower connector)
2. Scope of use: Automatic door hanging pulley belt connector
3. Material: Metal



Frameless door swing stop

Use it to clamp the frameless glass door so that it does not swing left and right.



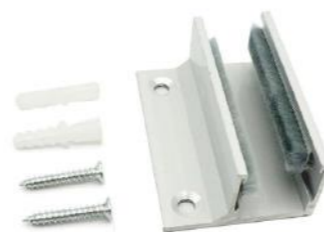
Note: Taking a single door as an example, it is installed at the overlapping part of the movable and fixed doors.



S4A-Tail wheel
Automatic Door Tail Wheel Lock
1. Belt width: 25
2. Shaft bore diameter: 53
3. Material: Stainless steel
4. Number of gears: 20
5. Gear thickness: 22mm



S4A-Door Stop
Sliding Glass Door Stopper
1. External materials: Galvanized iron castings
2. Internal materials: High quality nylon, alloy bearings



S4A-Sliding door holder
Sliding Door Holder
1. Main material: Aluminum alloy
2. Scope of application: 10-12mm glass



Frame door swing stop

Used on framed wooden doors, iron doors or framed glass doors to clamp the door so that it does not swing.





RS-140
Side Mount Garage Door Opener

1. Range of application: Various flat-open doors with the width ≤1200mm and the weight ≤120Kg
2. Open angle: 90°
3. Power supply: DC24V 5A
4. Size: 274x85x129mm
5. Weight: 9kg



D180S
Single door product list

1. Maximum door weight: 180kg
2. Maximum door width: 1200mm
3. Opening and closing time: 6-12S
4. Power supply: AC220V 50/60Hz
5. Rated power: 55W
6. Size: 320x110x70mm



S4A-219T
Automatic Door Pedal Switch

1. Supply power: AC/DC 12~30V
2. Reaction time: Relay output<45ms
3. Dimension: 186x175x53mm
4. Detection mode: Receive the open signal by the truncation of infrared ray which operated by foot



D180-ES
Eccentric Shaft

- 1.Type:180°Hinge
- 2.Material:cast iron + stainless steel
- 3.Surface:Galvanized arm, brushed decorative cover
- 4.Scope of application:framed door, wooden door, etc.



M-218
Safety Beam Sensor

1. Power supply: AC/DC 12V~30V
2. Maximum sending and receiving distance: 10M
3. Number of beams: Single beam or double beam optional
4. Dimensions (main controller): 105.5x53.4x28.5mm



UB-600
U bracket for Glass Door

1. Suitable for Door: In-swing Door
2. Opening Mode: 90° Degress Door



UB-150A
U Bracket for Sliding Doors Operator

1. Suitable for Door: In-swing Door
2. Material: Aluminum alloy



UB-150B
U Bracket for Sliding Doors Operator

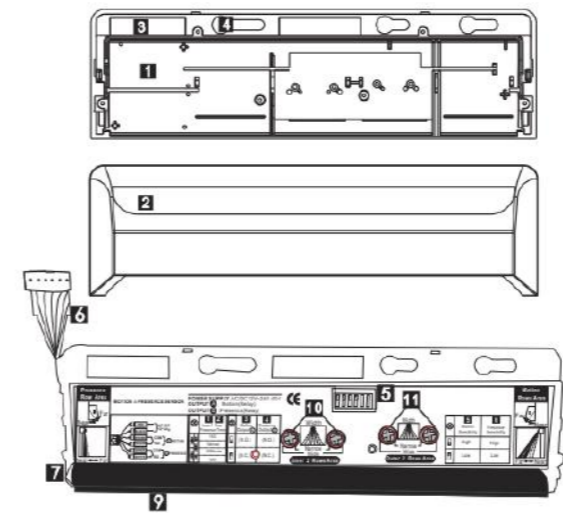
1. Suitable for Door: In-swing Door
2. Material: Aluminum alloy



M-254
Infrared IR Motion Presence Safety Sensor

- 1.Power Supply: AC/DC 12~24V (-/+10%)
- 2.Static Current: 30mA (DC12V)
- 3.Action Current: 110mA (DC12V)

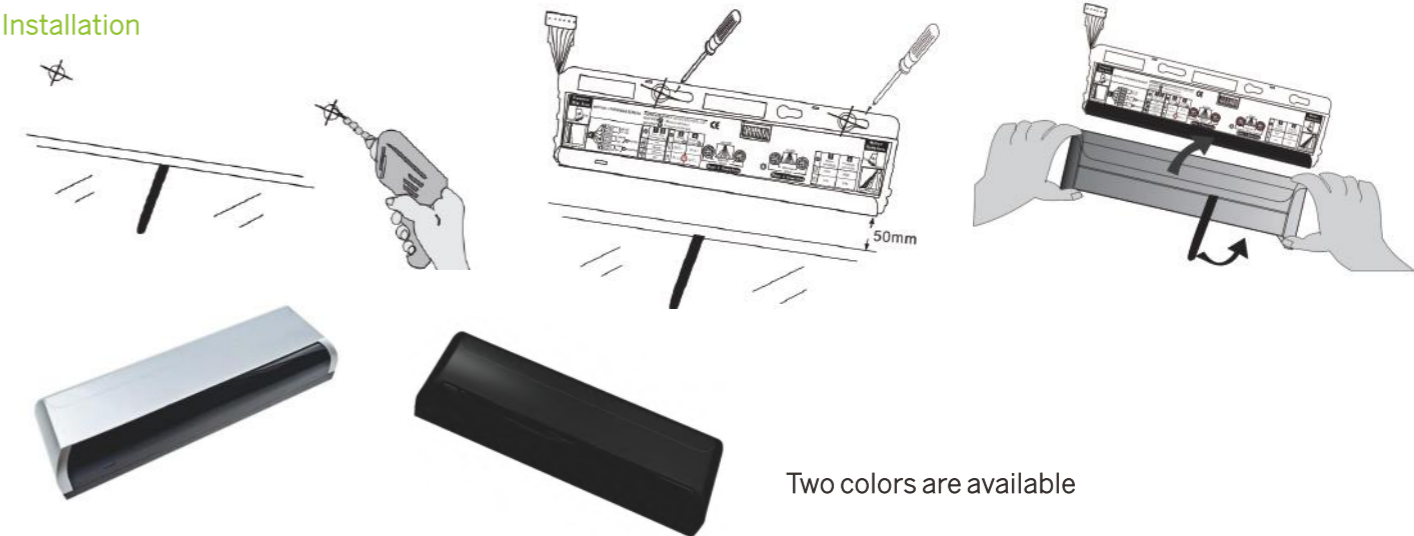
Infrared IR Motion Presence Safety Sensor For Automatic Door Opener



Product Overview

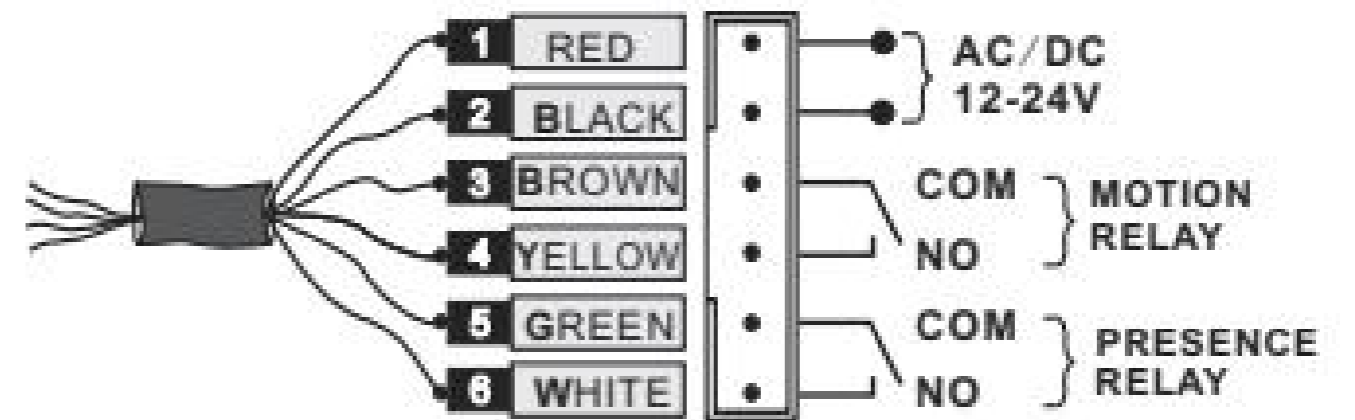
- 1** BOTTOM **2** TOP COVER **3** HOLE OF LINE **4** SCREW HOLE
- 5** DIP SWITCH **6** 6PIN LINE **7** DEEPH ADJUST **8** DEEPHADJUST
- 9** LED INDICATOR **10** WIDTH ADJUST (INNER 2 LINES) **11** WIDTH ADJUST (OUTTER 2 LINES)

Installation



Two colors are available

Wiring Diagram





DC12V Single Cylinder Fingerprint Touchscreen Keypad Door Lock



iFinger-D-Tuya

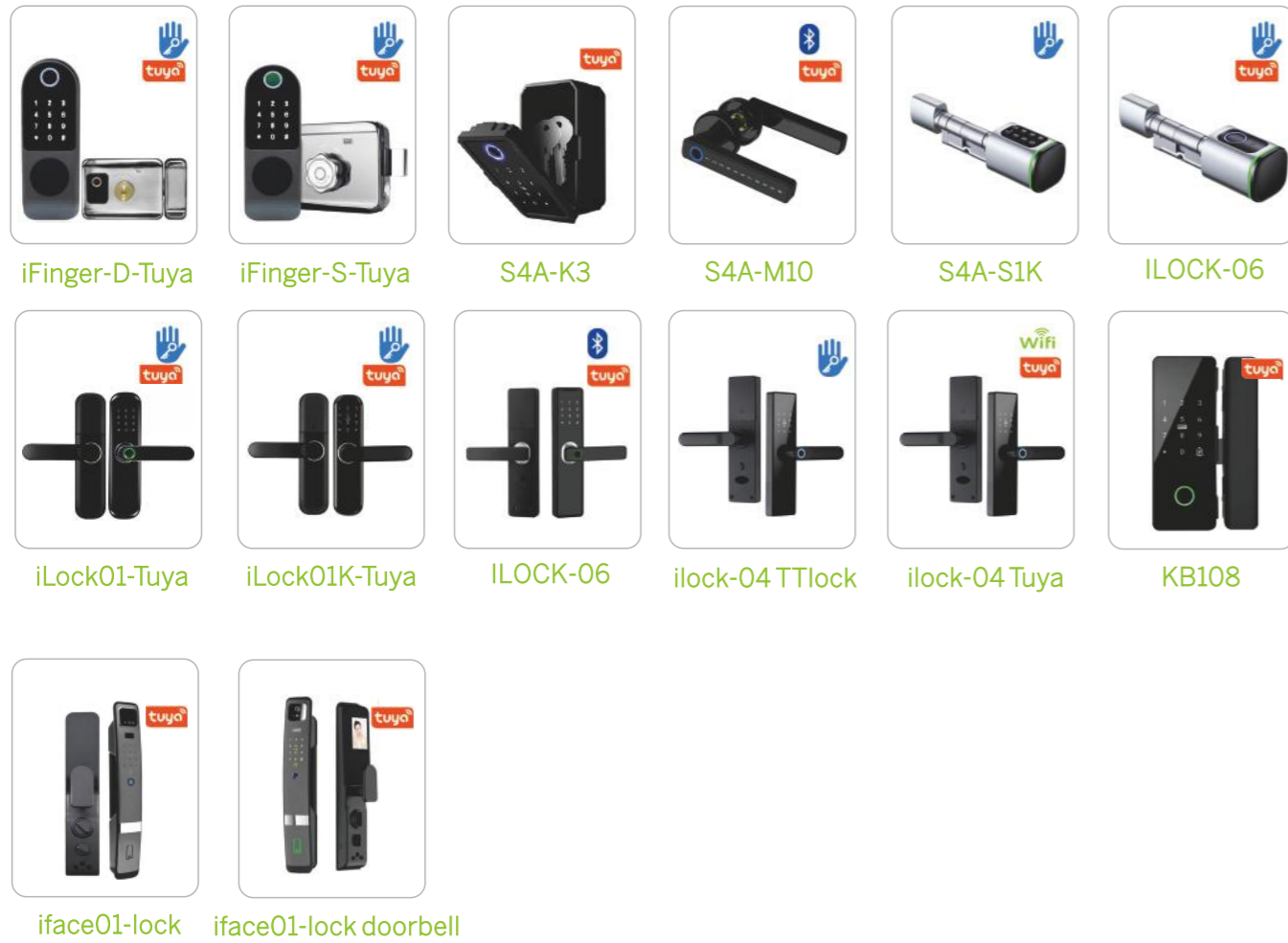


↳ TUYA WiFi Access Control&Tuya Standalone Access Controller



↳ Tuya and TTlock Smart Devices

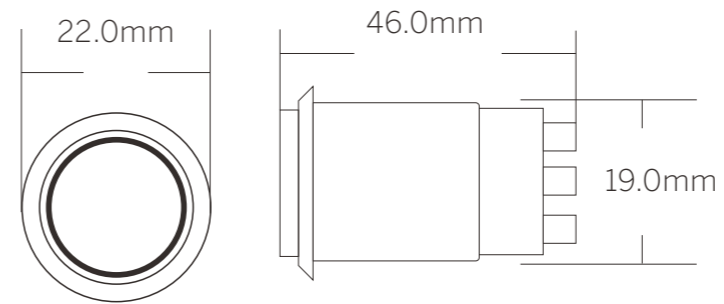




Tuya Exit button



Panel material	1.7mm thick, 304 stainless steel brushed panel
Button material	304 stainless steel, silver cobalt
Waterproof	IP67
Current Rating	3A, 36VDC
Voltage	DC12
Output	6wires (NO/COM/NC/COM/+12V/GND)



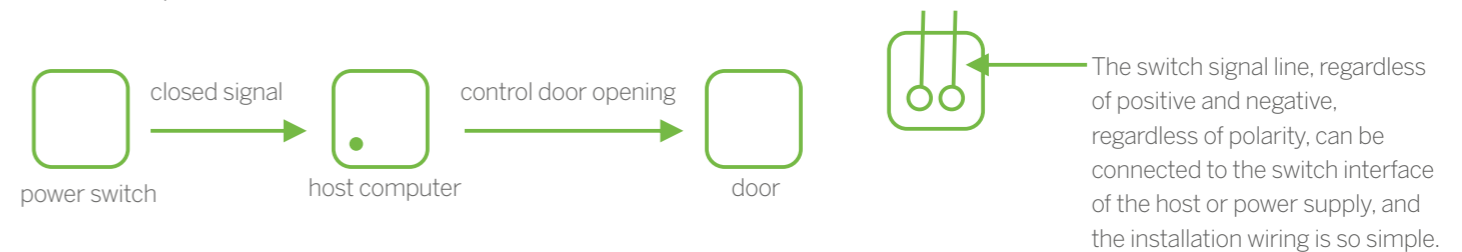
EB-SW40L	EB-SW50L	EB-SW70L	EB-SW86L
115x40mm	86x50mm	115x70mm	86x86mm

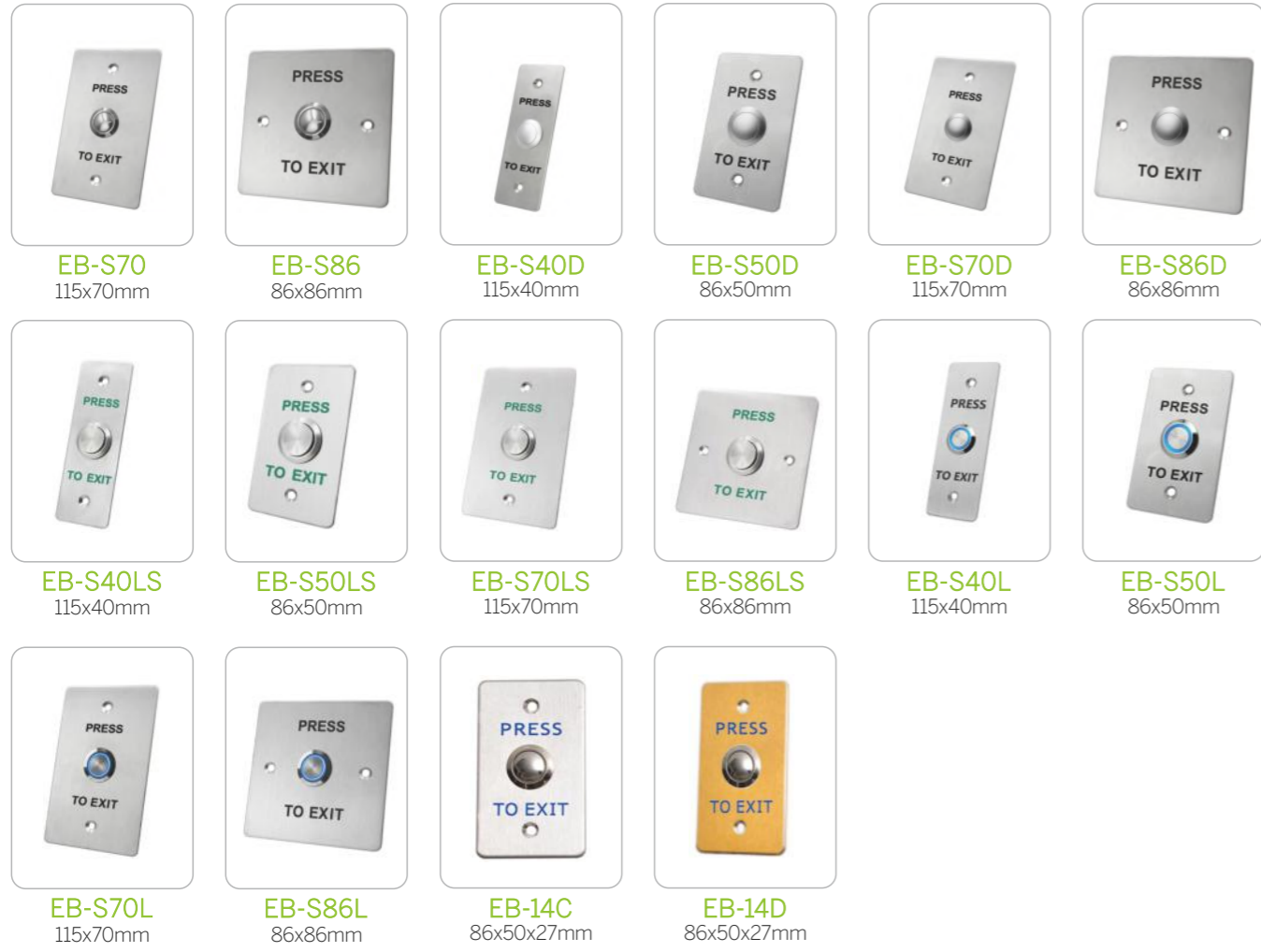
1.7mm Stainless Steel Release button



The working principle of the access control switch

Provide an instant closing signal to access control host or power supply, and then by access control host or power supply to control whether to open the door



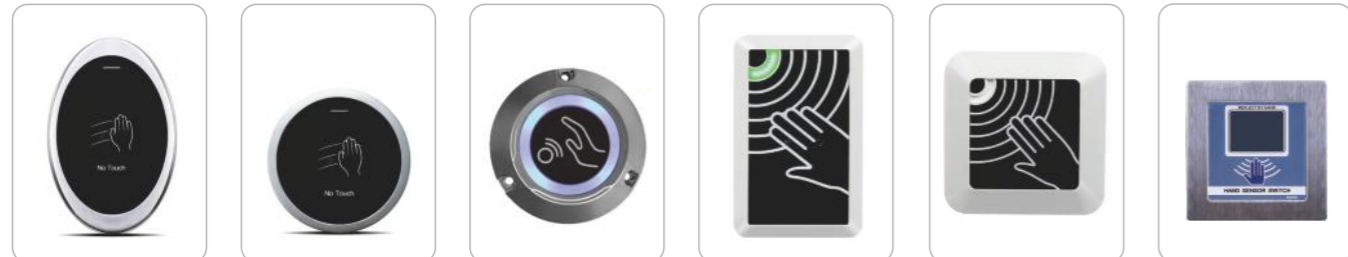


No Touch Exit Button





T9C 150x40x14mm **T9D** 150x40x14mm **T9E** 150 x 40x14mm **T8E** 86 x 86x14mm **T8F** 86 x 86x14mm **SI-18**



Sbutton-02 105x69x20 mm **Sbutton-01** 73x73x20mm **EB-W60** 60x60x19mm **Sbutton-03W** 86x55x20mm **Sbutton-04W** 86x86x20mm **S4A-201G** 92x92x33mm



S4A-505 Capacitive sensing **S4A-505W** Capacitive sensing **S4A-505MH** Infrared sensor **S4A-505MHW** Infrared sensor **WS-602H** 134x100x15mm **M201** 113x63x20mm



WS-86 86x86x11.5mm **S4A-201S** 86x86x14mm **WS-R** 80x80x28mm

No Touch with Remote Control



EB-16R1 115x70x26mm **EB-16R2** 115x70x26mm **EB-17R1** 86x86x26mm **EB-17R2** 86x86x26mm **EB-16R3** 115x70x26mm **EB-16R4** 115x70x26mm



EB-17R3 86x86x26mm **EB-17R4** 86x86x26mm **EB-16R5** 115x70x26mm **EB-16R6** 115x70x26mm **EB-17R5** 86x86x26mm **EB-17R6** 86x86x26mm



EB-16R7 115x70x26mm **EB-16R8** 115x70x26mm **EB-17R7** 86x86x26mm **EB-17R8** 86x86x26mm

Touch Sensitive Button



EB-10 86x86x26mm **EB-11** 86x56x26mm **EB-10W** 86x86x21mm **EB-11W** 86x50x21mm **C5** 86x55x12mm **C6** 86x86x12mm



C5B 86x55x12mm **C6B** 86x86x12mm **C7A** 115x40x12mm **C8A** 86x55x12mm **C9A** 115x70x12mm **C11A** 86x86x12mm



C7E 115x40x12mm **C8E** 86x55x12mm **C9E** 115x70x12mm **C11E** 86x86x12mm **OP10A** 86x86x18mm **OP10B** 86x86x18mm



Zinc Alloy Exit Switch Button



Touch Sensitive Button Aluminum Alloy Push button



Plastic Exit Button



0.8mm Stainless Steel Exit Button





S70L 115x70mm
S70LS 115x70mm
S50 86x50mm
S50D 86x50mm
S50L 86x50mm
S50LS 86x50mm



S28 91x28mm
S28D 91x28mm
S28L 91x28mm
S28LS 91x28mm
S40 115x40mm
S40D 115x40mm



S40L 115x40mm
S40LS 115x40mm

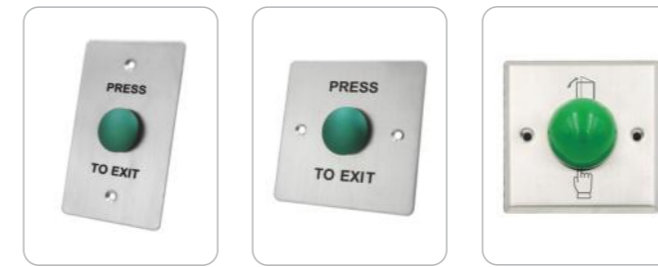
Mushroom Button Switches



EB-1405G 80x30x25mm
EB-1405R 80x30x25mm
EB-53G 53x53x25mm
EB-53R 53x53x25mm
EB-40M 115x40mm
EB-70M 115x70mm



S40MG 115x40mm
S50MG 86x50mm
S70MG 115x70mm
S86MG 86x86mm
SS40MG 115x40mm
SS50MG 86x50mm



SS70MG 115x70mm
SS86MG 86x86mm
EB-86M 86x86mm

Emergency Key Switch Button



EB-S40K 115x40mm
EB-S50K 86x50mm
EB-S70K 115x70mm
EB-S86K 86x86mm
EB-S40KD 115x40mm
EB-S50KD 86x50mm



EB-S70KD 115x70mm
EB-S86KD 86x86mm
EB-S40KL 115x40mm
EB-S50KL 86x50mm
EB-S70KL 115x70mm
EB-S86KL 86x86mm



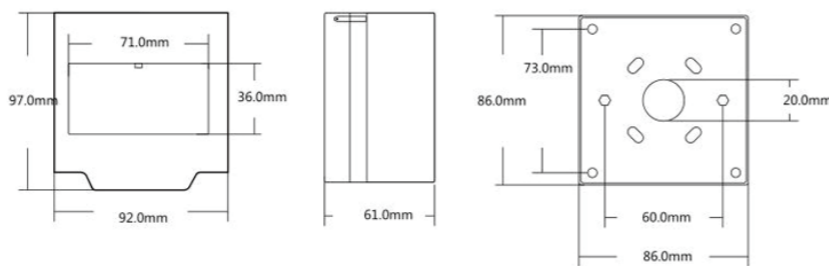
EB-S40KLC 115x40mm
EB-S50KLC 86x50mm
EB-S70KLC 115x70mm
EB-S86KLC 86x86mm
EB-12B 91x28x20mm
ANSI EB-14B 115x70x25mm



EB-29B 86x86x38mm
EB-30B 86x86x38mm



color	EB-20 green	EB-20 White	EB-20 Yellow	EB-20 Red
Dimensions	86Lx86Wx50H(mm)			
Standard Structure	Fireproof Material, Easy to install			
Current Rating	3A 36VDC Max			
Output Contact	NO\NC\COM			
Suitable for Door	Exit Door, Emergence Door			
Operating temp	-10°C ~ 55°C (14°F-131°F)			
Operating Humidity	0-95% (non- condensing)			
Material Selection	Fireproof Material, Sandblast Finished			
Weight	0.136kg			
Standard Packing	100pcs			



Emergency Door Release

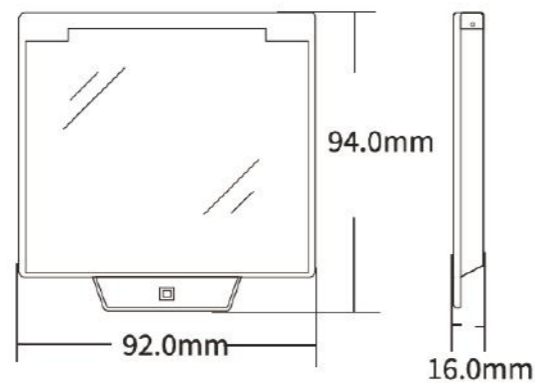
EB-20 green	EB-20 White	EB-20 Yellow	EB-20 Red



EB-20(Glass)
Dimensions:74x40x1(mm)



Plastic cover



- Transparent
- Waterproof
- Dust-proof



Baking Finish



PB-BF65A 65cm PB-BF65N 65cm
PB-BF100A 100cm PB-BF100N 100cm

Stainless Steel 304



PB-S65A 65cm PB-S65N 65cm
PB-S100A 100cm PB-S100N 100cm



TFS-1 (2m cable)
103x67x31mm



S4A-26

Vertical Rod Panic Bar



RDA-32C
evacuation doors
(escape doors)

Door Handle with Key



DHK-S
Stainless Steel
304

DHK-B
Baking Finish

Double Door Holder



DDH Zinc Alloy
182x78x60mm



Back & Mounting Boxes

M40 115x40mm	M70 115x70mm	M50 86x50mm	M86 86x86mm	M40s 115x40x28mm	M50s 86x50x28mm
M70s 115x70x28mm	M86s 86x86x28mm	P86 86x86x28mm	P86M 86x86x28mm	PG40 115x40x28mm	PG50 86x50x28mm
PG70 115x70x28mm	PG86 86x86x28mm	Ebox1 115x40mm	Ebox2 115x70mm	EBOX3 86x86mm	EBOX4 165x48mm
EB-20 box 86x86x50mm	EB-18SM 86x86x35mm				

EM-22 ID Thin Cards 125KHz	EM-23 ID Thick Cards 125KHz	MF-26 IC Thin Cards 13.56MHz	MF-27 Philips IC Thin card 13.56MHz	HID-01 HID Thin Cards	HID-02 HID Thick Cards
For Printing Purpose ID Card with Coating ID Card without Coating		UC-1 Ultralight Keyfob 13.56MHz	IC-UID Copyable And Rewritable UID Card	IC-CUID Repeatedly Erasing CUID Card	IC-FUID RFID Cards For Copy Clone Tag
ID+IC TK4100+Fudan Chip	UHF+ID 915MHz+125KHz	UHF+IC 915MHz+13.56MHz	UHF 3cards In 1 UHF+IC+ID	GE-ID 125KHz	GE-IC 13.56MHz
ID-EM-24 Wrist Bands	TAG-0	TAG-1 125KHz	TAG-2 125KHz or 13.56MHz	TAG-3 125KHz or 13.56MHz	TAG-4 125KHz
TAG-5 125KHz or 13.56MHz	TAG-6 125KHz or 13.56MHz	TAG-7 125KHz	TAG-8 125KHz or 13.56MHz	ID+IC-K TK4100+Fudan Chip 13.56MHz	UK-1 Ultralight Keyfob 13.56MHz



MS-03 Magnetic Sensor	MS-04 Magnetic Sensor	MC-05 Magnetic Sensor	MC-06 Magnetic Sensor	MC-51 Magnetic Sensor	MC-52 Magnetic Sensor
OC-55 Magnetic Sensor	OC-60B Magnetic Sensor	OC-60 Magnetic Sensor	OC-59 Magnetic Sensor	MC-51 Magnetic Sensor	MC-52 Magnetic Sensor
MC-56 Magnetic Sensor	MC-58 Magnetic Sensor	OC-55ZL Magnetic Sensor	RC-31 Magnetic Sensor	RC-32 Magnetic Sensor	RC-38A Magnetic Sensor
MC-SK03W-2 Magnetic Sensor	MC-SK03W-2 (315MHz) Magnetic Sensor	MC-SK03W-2 (433MHz) Magnetic Sensor	RC-33A Magnetic Sensor	RC-33B Magnetic Sensor	RC-34A Magnetic Sensor
EV12K Mifare Desfire 13.56MHz	EV18K Mifare Desfire 13.56MHz	S50 Mifare Classic 1k 13.56MHz	S70 Mifare Classic 1k 13.56MHz	iCode I-CODE2 Support ISO15693 13.56MHz	RC-39B Magnetic Sensor

DH-007 Door Holder	DH-009 Door Holder	DH-005 Door Holder	DH-008 Door Holder	DH-006 Door Holder	DH-110 Door Holder
DH-010 Door Holder	DH-011 Door Holder	S4A-31 Door Holder	S4A-33 Door Holder	S4A-34A Door Holder	S4A-34B Door Holder
S4A-34 Door Holder	S4A-35 Door Holder	S4A-36 Door Holder	S4A-36A Door Holder	S4A-36B Door Holder	S4A-39A Door Holder
S4A-39B Door Holder	S4A-39C Door Holder	S4A-39D Door Holder			

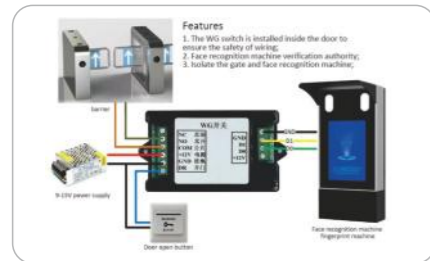


Model No.	DL-45	DL-60	DL-80
Material	Aluminum alloy		
Door Weight	20~45KG	50~65KG	65~85KG
Door Width	800mm	1000mm	1200mm
Finish	Electrostatic paint		
Speed adjustment	Two stages of adjustable speed		
Temperature	-40°C~80°C, -60°C~80°C		
Function	90° hold-open and Automatic		
Warranty	300000 times; 500000 times		
Dimensions	145x57x37mm	175x65x40mm	202x69x44mm

DL-45	DL-60	DL-80	DL-120	080-R
25-45KG	45-60KG	65-80KG	80-120KG	30-80KG

S4A-101 Small head with 8mm	DL-34 Tappet Contacts	DL-34B Plastic	S4A-401-50 Aluminum Alloy Exposed Mounting	S4A-401-40 Zinc Alloy+Stainless steel tube	S4A-701 Plastic +Stainless steel tube
S4A-201 (silver paint) Plastic	S4A-301 Zinc Alloy	S4A-201 Black	S4A-601	S4A-601F Stainless Steel Mortise Mounting	S4A-601S Door Loop Wire Protector

S4A-501 Interlock Module of 2 Doors	S4A-502 Door Control Relays Modules	S4A-504 Voltage Switch Module	S4A-505 Time Delay Module	EB-405 Remote Control	EB-19A Metal Remote Control
EB-19 ABS Remote Control	EB-19B Remote Control with 2relay	EB-19D Remote Control with 4relay	EB-19H Remote Control with 8relay	M-204 Microwave sensor	BS-20 Microwave sensor
WG-USB USB-WG Converter	WG-RS485 WG-RS485 Converter	WG-Extender WG Signal Extender	WG-TCP Wiegand Converter to TCP/IP	HDC16B Wiegand Converter Reader	C485 RS485/232
WG-USB Wiegand 26/34 Converter into USB	WD-26 Wireless Doorbell	B12 Wired Doorbell	B12-A Wired Doorbell	RW1990 Readable and Writable	RHD-103 Emergency Button
ES-626 Alarm Siren	BC-820A Wired Smoke Detector	SS-168 Smoke Detector	DH-201 Door Hinges	SQ-08 Queuing Stand about 6.5kg	



Wiegand-Dry
Wiegand Output To Relay Dry Point



Wiegand-Filter
Duplicate Card Number Filter Module



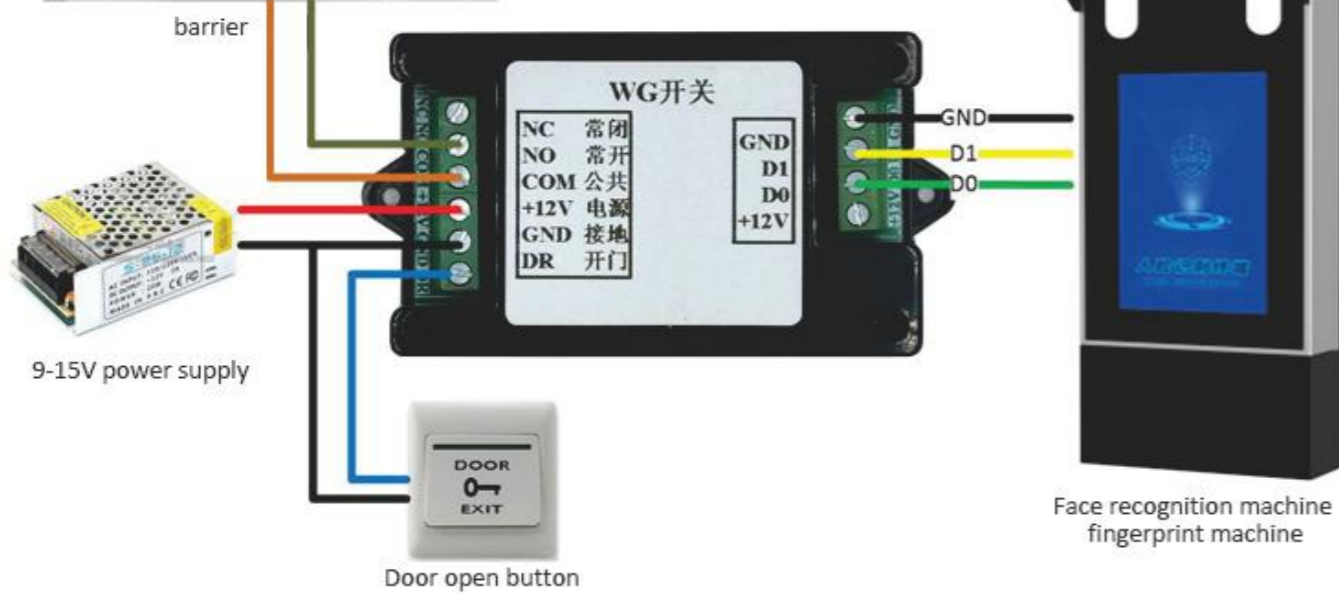
- GTP-8000**
 Touch-Screen guard tour probe
1. Reading: 125kHz EM card
 2. Data transmission: 3G network/Magnetic USB cable
 3. Fingerprint: Semiconductor fingerprint reader
 4. Camera: 2.0 mega pixel back camera
 5. GPS: <=10 meters positioning precision
 6. Storage capacity: 10,000 logs
 7. Item for each spot: 30 pcs(Expandable to level 4 menu.)
 8. Battery: 2700mAh built-in rechargeable lithium battery



- GTP-6900**
 GPS Guard Tour probe systems
1. GPS tracking, locating patrol site
 2. GPRS real time data transmission
 3. Flashlight+2.0 mega pixels camera
 4. Electronic railing, intrusion alarm
 5. 5 modes LED lighting
 6. Display: TFT 1.8' High-definition color display



- Features**
1. The WG switch is installed inside the door to ensure the safety of wiring;
 2. Face recognition machine verification authority;
 3. Isolate the gate and face recognition machine;



- GTP-6200C**
 USB cable (Pogo pin contacts)
 FREE USB DRIVER
1. Material: Metal
 2. Storage capacity: 800,000 logs
 3. Impact(drop) storage capacity: 32,000 logs
 4. Size: 130mmx40mmx25mm
 5. Weight: 170g
 6. Workable tags: 125kHz EM rfid tags
 7. Induction: Auto-induction without pressing button
 8. Battery: Built-in 3.7v 900mAh rechargeable lithium
 9. Feature: Impact (drop) record function
 10. Operation prompt: LED flicker + vibration



- GTP-6200D**
 USB cable (Pogo pin contacts)
 FREE USB DRIVER
1. Material: Metal
 2. Storage capacity: 80,000 pcs
 3. Impact storage capacity: 32,000 logs
 4. Size: 130mmx40mmx25mm
 5. Weight: 170g
 6. Workable tags: 125kHz EM rfid tags
 7. Induction: Auto-induction without pressing button
 8. Battery: Built-in 3.7v 900mAh rechargeable lithiumbattery
 9. Feature: Mini LCD display, show time,date, records amount and tags ID when scanning tags; Impact(drop)record function
 10. Operation prompt: LED flicker +beep sounds



- GTP-6500D Color LCD display**
 USB cable (Pogo Pin Contacts)
1. Material: Metal alloy
 2. Storage capacity: 10,000 logs
 3. Size: 125mmx56mmx26mm
 4. Weight: 180g
 5. Workable tags: 125kHz EM /13.56MHz ISO15693/13.56MHz ISO14443A rfid tags selectable
 6. Induction: Auto-induction under main interface
 7. Battery: 900mAh rechargeable built-in lithium battery
 8. Feature: LCD display, Lighting route navigation. Custom event function, like a event wallet



- GTP-6500L**
 USB cable (Pogo pin contacts) Bluetooth
1. Material: Metal alloy
 2. Storage capacity: 10,000 logs
 3. Size: 125mmx56mmx26mm
 4. Weight: 180g
 5. Workable tags: 2.4G tags
 6. Induction: Auto-induction under main interface
 7. Battery: 900mAh rechargeable lithium battery
 8. Feature: 15 meters long range reading, LCD display, Lighting route navigation . Custom event function, like a event wallet



GTP-FG-1 2G/3G

- GPRS or USB cable 2G/3G optional
1. Material: ABS+PC+rubber coating
 2. Storage capacity: 10,000 pcs
 3. Size: 170mmx75mmx40mm
 4. Weight: 270g
 5. Workable tags: 125kHz EM rfid tags
 6. Induction: Auto-induction under main interface
 7. Battery : 1350mAh rechargeable and replaceable lithium battery
 8. Feature: GPRS transmission, Panic button, Optical fingerprint technology ,LCD display,route navigation, keypad input
 9. Fingerprint capacity: 300 pcs
 - 10.Operation prompt: LED flicker+beep sounds+LCD display

We are the first manufacturer to produce this device with GPRS or 3G



GTP-FG-2 2G/3G

- GPRS or USB cable (Pogo pin contacts)
1. Material :ABS+PC+rubber coating
 2. Storage capacity:10,000 logs
 3. Size :170mmx75mmx40mm
 4. Weight :200g
 5. Workable tags:125kHz EM rfid tags
 6. Induction :Auto-induction under main interface
 7. Battery : 1350mAh rechargeable and replaceable lithium battery
 8. Feature: GPRS transmission, Panic button, LCD display,route navigation, keypad input
 9. Fingerprint capacity : No
 - 10.Operation prompt: LED flicker+beep sounds+LCD display



GTP-6200T

- Data Downloader Work for GTP-6200F
Wireless,plug and play USB cable to PC
1. Material: ABS+PC all plastic crushing
 2. Storage capacity: No
 3. Size: 118mmx82mmx36mm
 4. Weight: 180g
 5. Battery: No
 6. Read tags: No
 7. Operation prompt: LED flicker + beep sounds



GTP-6200TC

- Data Downloader Work for GTP-6200F
Wireless,plug and play USB cable to PC
1. Material: ABS+PC all plastic crushing
 2. Storage capacity: 600,000 logs
 3. Size: 118mmx82mmx36mm
 4. Weight : 220g
 5. Battery: 3pcs AA battery (Need additional purchase)
 6. Features: LCD display , show time, date, record amount operation prompt . Can work offline with 3 pcs AA battery to download data(download data only)
 7. Read tags: No
 8. Operation prompt: LED flicker +beep sounds+LCDplay



GTP-6200E

- USB cable
1. Material: Metal
 2. Storage capacity: 80,000 pcs
 3. Impact storage capacity: 32,000 logs
 4. Size: 130mmx40mmx25mm
 5. Weight :170g
 6. Workable tags: 125kHz EM rfid tags
 7. Induction: Auto-induction without pressing button
 8. Battery: Built-in 3.7v 900mAh rechargeable lithium battery
 9. Feature: 5 modes lighting, Ultra long light range



GTP-6500F Color LCD display

- USB cable (Pogo Pin Contacts)
1. Material: ABS+PC
 2. Workable tags: 125kHz EM rfid tags
 3. Battery: 1000mAh rechargeable built-in lithium battery
 4. Feature: Optical fingerprint technology, LCD display, route navigation, multiple incident options for each check spot, Language switch freely, FREE DRIVER INSTALLATION
 5. Capacity: 80,000 logs
 6. Impact capacity: 32,000 logs
 7. Fingerprint capacity: 225 pcs
 8. Size: 132mmx57mmx25mm



GTP-6300

- USB cable (Pogo pin contacts)
1. Material: Aluminium alloy
 2. Storage capacity: 7200 logs
 3. Size: 140mmx29mm
 4. Weight: 100g
 5. Workable tags: 125kHz EM rfid tags
 6. Induction: Auto-induction without pressing button
 7. Battery: 900mAh rechargeable and replaceable lithiumbattery
 8. Feature: Pogo pin contacts, very strong to resistcommunication port corrosion, vandalism and soaking



GTP-6200F

- Wireless via Socket Data downloader (Need additional purchase)
1. Material: Aluminium alloy + rubber coating
 2. Storage capacity: 8000 logs
 3. Size: 142mmx32mmx40mm
 4. Weight: 150g
 5. Workable tags: 125kHz EM rfid tags
 6. Induction: Auto-induction without pressing button
 7. Battery: 3v CR123A standard non-rechargeable lithium battery
 8. Feature: No exposed communication port , waterproof and prevent vandalism



GTP-F2 LCD display+Keypad

- USB cable
1. Material: ABS+PC
 2. Storage capacity: 10,000 logs
 3. Size: 170mmx75mmx40mm
 4. Weight: 200g
 5. Workable tags: 125kHz EM rfid tags
 6. Induction: Auto-induction under main interface
 7. Battery: 1350mAh rechargeable and replaceable lithium battery
 8. Feature: LCD display, route navigation, event customize for each check points, keypad input
 9. Operation prompt: LED flicker+ beep sounds+ LCD display



GTP-F1 Finger+LCD display+Keypad

- USB cable
1. Material: ABS+PC
 2. Storage capacity: 10,000 logs
 3. Size: 170mm x75mm x40mm
 4. Weight: 220g
 5. Workable tags: 125kHz EM rfid tags
 6. Battery: 1350mAh rechargeable and replaceable lithium battery
 7. Feature: Optical fingerprint technology, LCD display, route navigation,event customize for each check points, keypad input
 8. Fingerprint capacity: 300pcs



GTP-6000

- USB Cable
1. Material: 304 stainless steel
 2. Storage capacity: 7200 logs
 3. Size: 142mm x35mm
 4. Weight: 230g
 5. Workable tags: 125kHz EM rfid tags
 6. Induction: Key-press
 7. Battery: 900mAh rechargeable and replaceable lithiumbattery
 8. Operation prompt: LED flicker + vibration



GTP-01A

- Round shape
1. Passive tag, installed at where patrol needed, work as alabel to mark check location
 - 2.125kHz ,13.56MHZ ISO15693 and ISO14443A optional
 3. Size: φ60mm
 4. Weight: 30g
 5. Color: Green, Silver gray and White luminous(recommended, can be seen at dark)
 6. Battery : No, passive tags
 7. Compatibility: 125kHz tags are for all our models.13.56MHZ ISO15693 and ISO14443A are for customizedmodel GTP-6500



GTP-6700

- Mini GPRS Guard Tour system
1. Reading Method: Auto-induction
 2. Sensor Frequency: 125kHz EM ID tag
 3. Material: ABS plastic+rubber handle
 4. Direction: LED+Vibration
 5. Storage capacity: 80,000pcs
 6. Impact record capacity: 32,000pcs
 7. Battery: 1200 mAh built-in li-ion (rechargeable) battery



GTP-6800 Camera

- USB cable (Pogo Pin Contacts)
1. Material: ABS+PC+rubber coating
 2. Storage capacity: 80,000 logs
 3. Impact Records Capacity: 32,000 logs
 4. Size: 131x56x20mm
 5. Weight: 140g
 6. Workable tags: 125kHz EM rfid tags
 7. Induction: RFID non-contact auto-induction
 8. Battery: Internal rechargeable lithium battery "
 9. Feature: Internal Camera, can take site photo if incident come with check spot
 10. Download data: USB cable (Pogo pin contacts)
 11. Operation prompt: Vibration+LCD display



GTP-01B

- Glass Tube Check Spot Card
1. Material: ABS+PC all plastic crushing
 2. Storage capacity: 600,000 logs
 3. Size: 118mmx82mmx36mm 4. Weight : 220g
 5. Battery: 3pcs AA battery (Need additional purchase)
 6. Features: LCD display , show time, date, record amount operation prompt . Can work offline with 3 pcs AA battery to download data(download data only)
 7. Read tags: No
 8. Operation prompt: LED flicker +beep sounds+LCDplay



GTP-01C

- New style Check Spot
- Water-resistant, ABS plastic material, 125KHz, EM card .
1. Check sport type: RFID
 2. Working frequency: 125KHz, EM
 3. Battery : None, passive tag
 4. Working temperature : -40°C - 85°C
 5. Size: 70mm*70mm*10mm
 6. Weight: 33g
 7. Water-resistant, ABS plastic material, can be scanned around 350,000 times
 8. Installation : Glue with structural adhesive or fixed with screws



GTP-6600

- USB cable or USB (Pogo pin contacts)
1. Material: Aluminium alloy
 2. Storage capacity: 80,000 pieces
 3. Dimension: 130mm x φ28mm
 4. Weight: 120g
 5. Reading technology: Read 125kHz EM(ID) tags proximity
 6. Flashlight: High/Medium/Low/Strobe/SOS
 7. Battery: 3.7V built-in rechargeable li-ion battery
 8. Performance: IP67, waterproof, shockproof



GTP-6100 Mini LCD display

- USB Cable
1. Material: Metal
 2. Storage capacity: 7200 logs
 3. Size: 142mmx35mm
 4. Weight: 310g
 5. Workable tags: 125kHz EM rfid tags
 6. Induction: Auto-induction without pressing button
 7. Battery: 900mAh rechargeable and replaceable lithium battery
 8. Feature: Mini LCD display, show time, date, records amount and tags ID when scanning tags
 9. Operation prompt: LED flicker +beep sounds+LCD display



GTP-02A

- Staff RFID Tags
1. Passive tag, carried by patrol staff .Scan it to check in while start patrol work, suggest user purchase this to verify patrol staff .
 2. Working frequency: 125kHz, 13.56MHZ ISO15693 and ISO14443A optional
 3. Battery: No, passive tags
 4. Compatibility: 125kHz tags are for all our models



GTP-5000C

- TCP/IP Real-Time Guard Tour Probe
1. Structure: IMD, super wear resistant
 2. Instruction push: Real time message
 3. Data transmission: TCP/IP
 4. Reading: Fingerprint/Staff card
 5. Fingerprint: Optical, 255cs
 6. Screen: 2.4" TFT screen



GTP-9100

- Wireless (to GTP-6500)
USB cable (to computer)
1. Wireless communication, Can receive data from GTP-6500 within 2m
 2. Multiple GTP-6500 unit can share the same GTP-9100 datadownloader
 3. Size: 105 x 70x15mm
 4. Weight: 90g
 5. Battery: No
 6. Operation prompt: LED flicker



CPSE 2023 - THE 19TH CHINA PUBLIC SECURITY EXPO



We have distributors in these countries, as below:

- A
- B
- C
- D
- E
- F
- G
- H
- I
- J
- K
- L
- M
- N



Anna Zhang



Azura TAN



Rebecca Fu



Vivian He