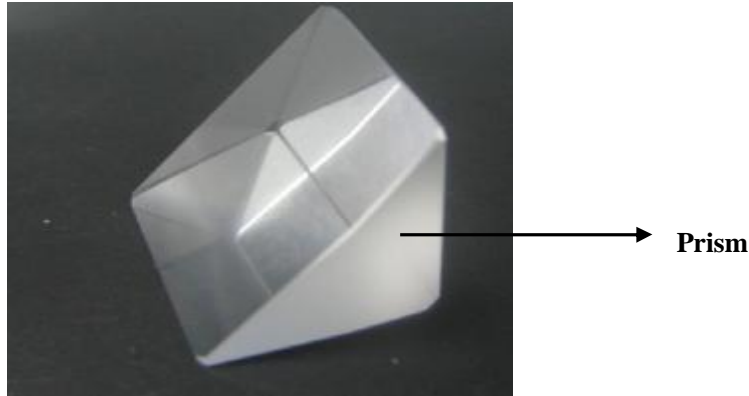


Prism Changing

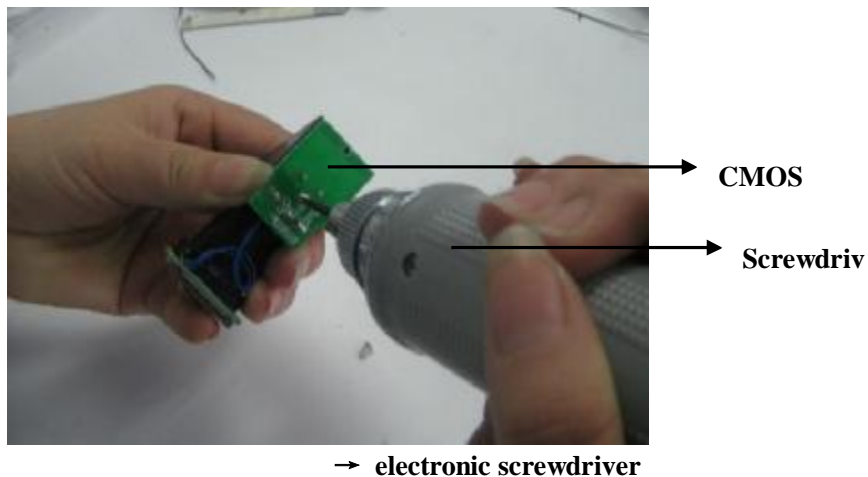
The necessary components and tools:

Prism, fingerprint sensor, electronic screwdriver, Glue 502, inflator, gauze and fingertip etc.

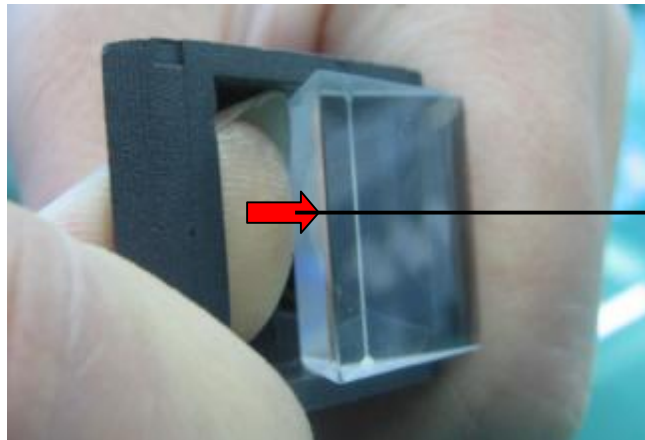


一、 Taking out the prism:

Firstly, please hold the fingerprint sensor with the damaged prism by your left hand and put its back panel up forward; take out the screw from the CMOS with electronic screwdriver. Please refer to the below illustration:



To take out the CMOS ,and then, lightly knock the fingerprint sensor on the desk or on the clean floor to make the prism beyond the fingerprint sensor mould; and then,, push the prism from the back of the fingerprint sensor to make the prism come out. Please refer to the below illustration:

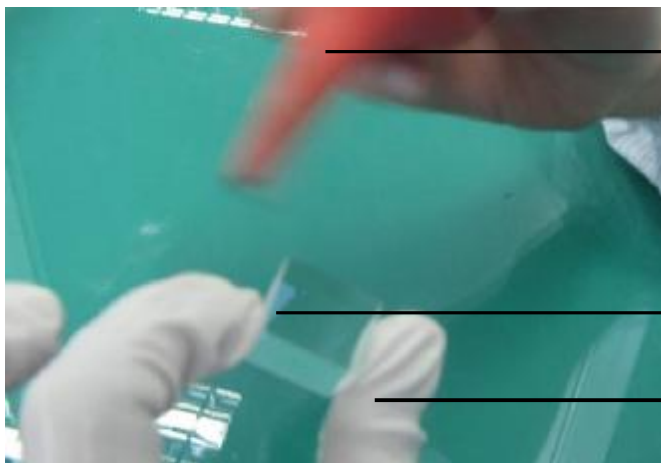


**Push the prism
by finger**

二、Changing the prism

Preparation: All operation should be finished on a clean worktable; please remember to wash your hands and wear the fingertip (to avoid the fingerprint being pressed on the prism)

1. Hold the prism by your left hand, and use the inflator to make every side of the prism clean.

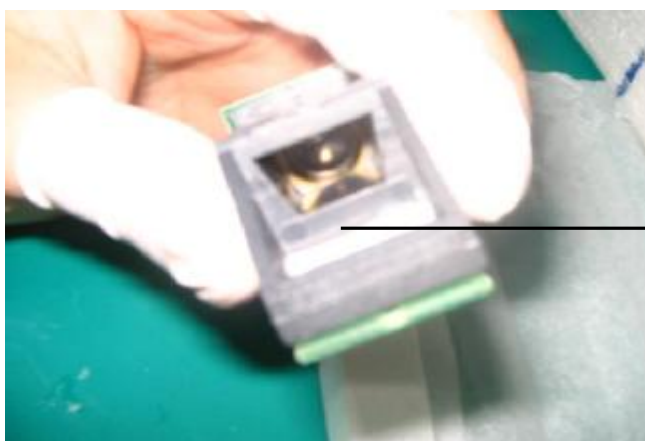


Inflator

Prism

Fingertip

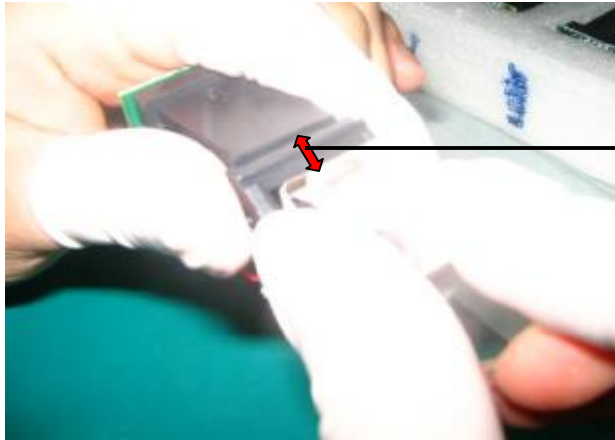
2. Hold the fingerprint sensor with your thumb and forefinger, please do it as below:



**Fingerprint sensor
before the prism ...**

→ **Fingerprint sensor before the prism be installed**

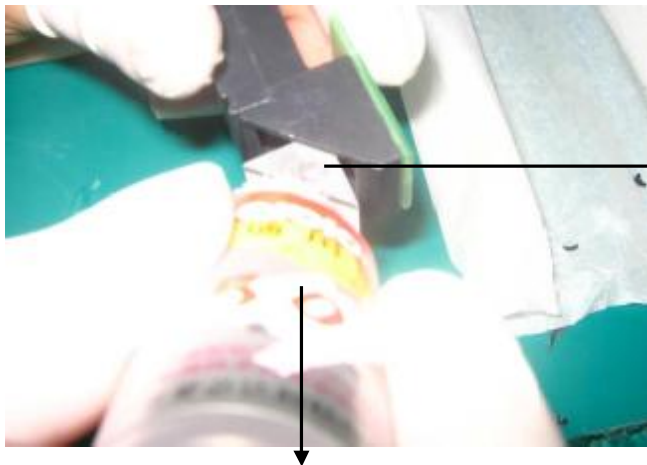
3. Grip the two sides of the prism by your right thumb and forefinger, and put it into the fingerprint sensor mould (please don't press it into the fingerprint sensor). Please refer the below illustration:



红色表明棱镜与
指纹头有点距离
(棱镜未按压)

The red mark means that there's some distance between the prism and fingerprint sensor mould
(The prism is not pressed)

4. Then wipe the 502-glue on both sides of the unpressed prism so that the prism can be fixed at the inside of the fingerprint sensor.

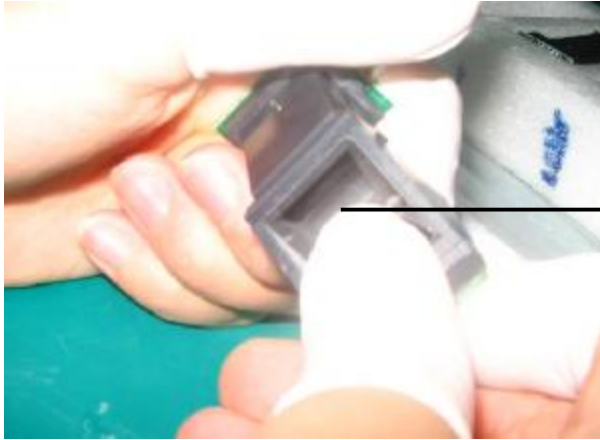


棱镜的一侧，另一
侧在下面。涂完一
侧的胶水，再将它
翻转涂另一侧

502-glue

→ **One side of the prism, and the other side is under it; Please wipe one side and overturn it to wipe the other side.**

5. After wiped the glue, please press the prism with your thumb with a bit little power to make the insides of prism and fingerprint sensor stucked with each other. Please the below illustration is for your reference: Please note that it should be stucked firmly to avoid laxation.



Push the prism

→ Push the prism by your finger

Finally, the prism can be fixed inside of the fingerprint sensor, and then your can fix the CMOS at the back of the fingerprint sensor.