

The APT-100 bidirectional keyfob is designed for operation as part of the ABAX two-way wireless system. It is supported by:

- ACU-100 controller with firmware version 2.00 or later, interacting with an INTEGRA control panel with firmware version 1.06 or later;
- INTEGRA 128-WRL control panel with firmware version 1.06 or later.

The keyfob can be assigned to any user of the system (except for the service). The way of adding the keyfobs is described in the user manual for the INTEGRA control panel.

The main features of the keyfob:

- Encrypted bidirectional communication between the keyfob and the ACU-100 controller or the INTEGRA 128-WRL control panel.
- 5 buttons for starting up to 6 selected functions.
- 3 LEDs indicating the status of selected alarm system outputs.
- Audible signaling of keypresses.
- Audible signaling of transmission from the keyfob being received by ACU-100 controller or INTEGRA 128-WRL control panel.
- Key backlighting activated by pressing any key.
- Low battery indication.

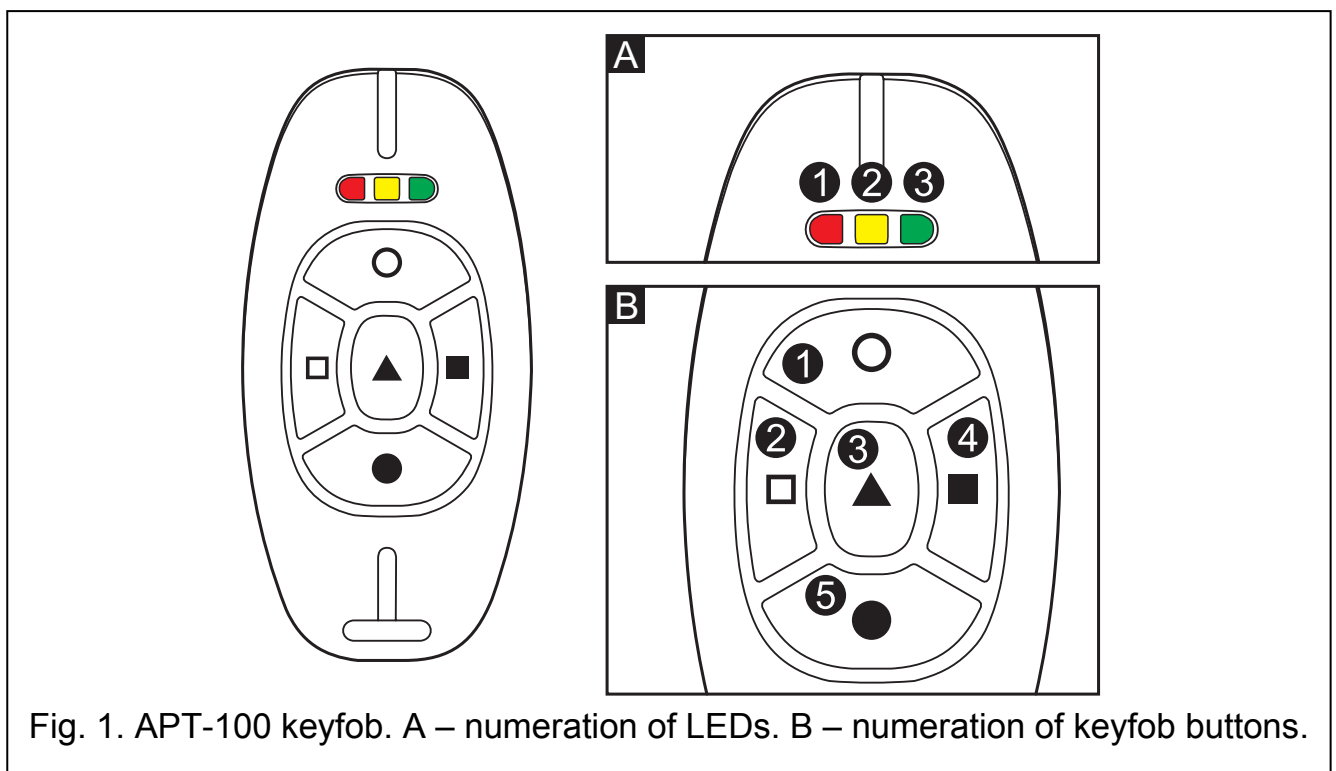


Fig. 1. APT-100 keyfob. A – numeration of LEDs. B – numeration of keyfob buttons.

## **1. Control of the INTEGRA alarm system**

---

The control is provided by means of selected zones of the alarm system. These zones should not physically exist and their programmed type of line must be different from NOT USED or FOLLOW OUTPUT. Any type of reaction can be programmed for them. Five keyfob buttons make it possible to control up to six zones of the system. Pressing a single button or the buttons 1 and 5 simultaneously will violate the zone assigned to the button/combination of buttons. The zone will remain violated as long as the keyfob button/combination of buttons is pressed.

The way of assigning zones to the keyfob buttons is described in the user manual for INTEGRA control panels.

Additionally, pressing a keyfob button will generate a suitable beep and turn on the key backlighting for 5 seconds. After the ACU-100 controller or the INTEGRA 128-WRL control panel acknowledges receiving the transmission, the keyfob will generate another beep.

## **2. Signaling the status of alarm system outputs**

---

On pressing one of the keyfob keys (which does not have necessarily to control a system zone), information on the status of three selected system outputs will be presented on the LEDs for a few seconds. Thus you can get confirmation of the execution of function or information about current status of the system. The outputs the status of which is presented by means of keyfob LEDs need not exist physically.

The keyfob LEDs lit if:

- output with normal polarity is active;
- output with reversed polarity is inactive.

The way of assigning outputs to the keyfob LEDs is described in the user manual for INTEGRA control panels.

## **3. Battery replacement**

---

The keyfob is supplied from a CR2032 3V lithium battery. The battery life depends exclusively on how the keyfob is used. The more frequently the buttons are pressed, the higher the power consumption is. Each transmission sent from the keyfob contains information on the battery status. If the battery is low, the control panel will signal a trouble. Additionally, on pressing any key, the keyfob will signal low battery status by blinking of the key backlight.

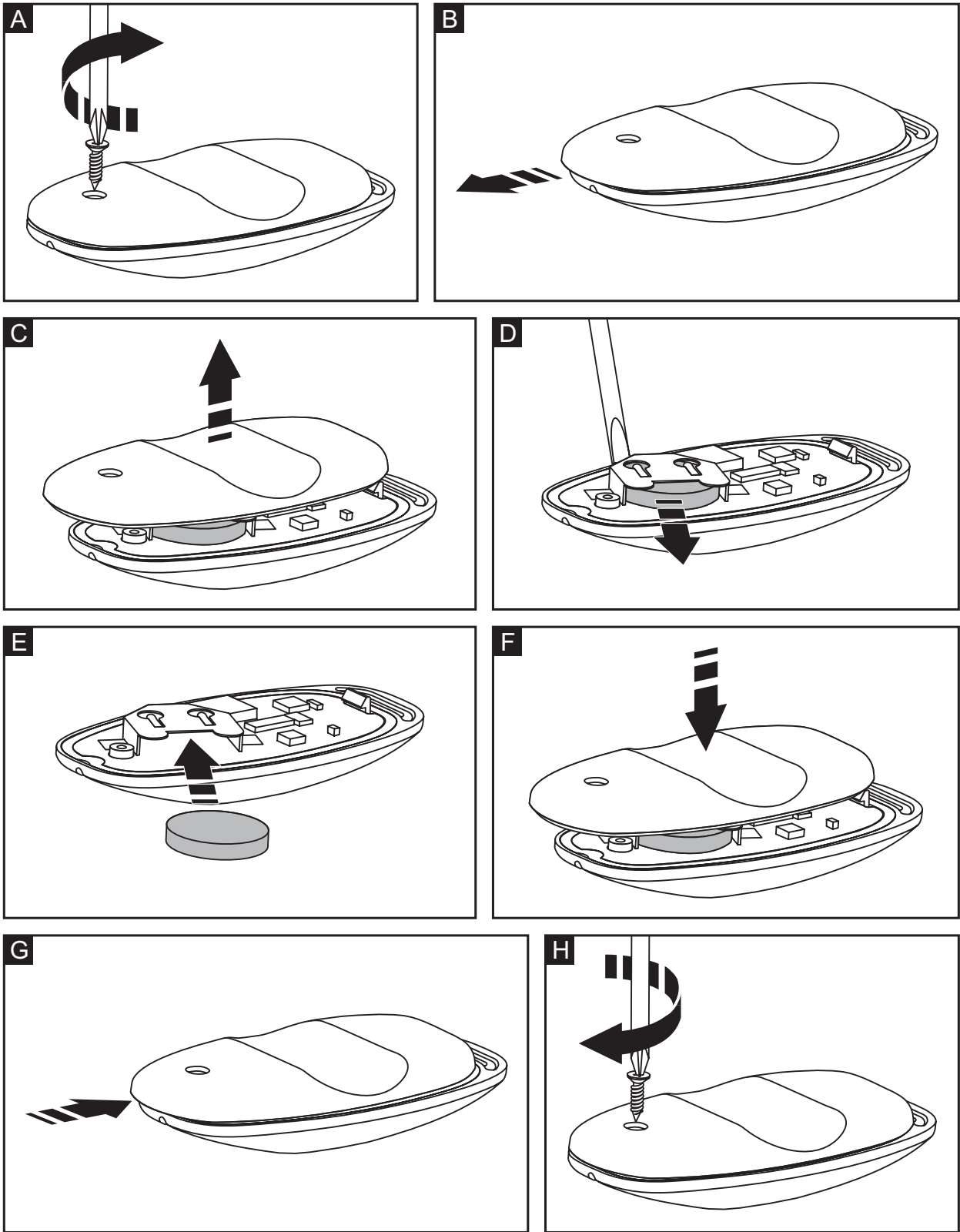


Fig. 2. Replacement of the keyfob batteries.

## 4. Specifications

Operating frequency band .....	868.0 MHz ÷ 868.6 MHz
Radio communication range .....	up to 150 m (in open area)
Power supply .....	lithium battery CR2032 3V
Environmental class according to EN50130-5 .....	II
Operating temperature range .....	-10...+55 °C
Housing dimensions .....	78 x 38 x 16 mm
Weight .....	30 g



**The used batteries must not be discarded, but should be disposed of in accordance with the existing rules for environment protection.**

DECLARATION OF CONFORMITY		CE1471
<b>Product:</b> APT-100 – Bidirectional remote control keyfob	<b>Manufacturer:</b> SATEL spółka z o.o. ul. Schuberta 79 80-172 Gdańsk, POLSKA tel. (+48) 0-58 320-94-00 fax. (+48) 0-58 320-94-01	
<b>Product description:</b> Bidirectional remote control keyfob intended for use with ABAX wireless alarm system components in intruder alarm systems.		
<b>The product is in conformity with the following EU Directives:</b> R&TTE 1999/5/EC		
<b>The product meets the requirements of harmonized standards:</b> ETSI EN 300 220-1: v.2.1.1; ETSI EN 300 220-2: v.2.1.2 ETSI EN 301 489-1: v.1.6.1.; EN 301 489-3: v.1.4.1 EN60950-1:2006		
<b>Notified entity participating in the conformity assessment:</b> Identification No.: 1471		
Gdańsk, Poland 2009-05-09	<b>Head of Test Laboratory:</b> Michał Konarski	
The latest EC declaration of conformity and product approval certificates are available for downloading on website <a href="http://www.satel.pl">www.satel.pl</a>		

SATEL sp. z o.o.  
ul. Schuberta 79  
80-172 Gdańsk  
POLAND  
tel. + 48 58 320 94 00  
info@satel.pl  
www.satel.pl