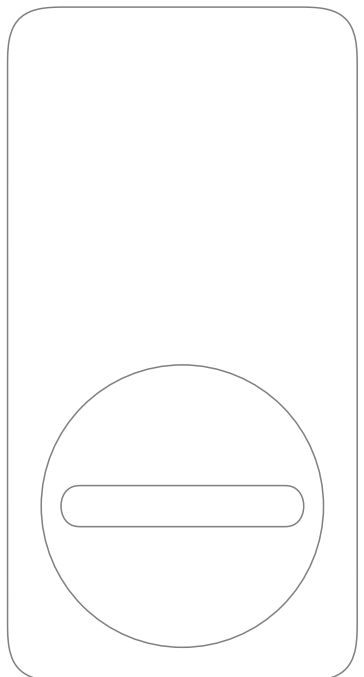


SwitchBot Lock User Manual



Please read this user manual carefully before using your device.

Package Contents

| | | |
|-----------------------------------------------|----------------------------|------------------------------|
| | | |
| SwitchBot Lock Main Unit (Batteries included) | PH1 Cross Head Screwdriver | Magnet |
| | | |
| SwitchBot Tag | Thumbturn Adaptor | Additional Double Sided Tape |
| | | |
| Wet Wipe | User Manual | Spare Screws |
| | | |
| Memo Sticker (for SwitchBot Tag) | | |

List of Components

| | |
|--|-----------------------------------|
| | LED Indicator Light |
| | Thumbturn |
| | Battery Case Cover |
| | Main Unit Stand (Adjustable) |
| | Double Sided Tape (pre-installed) |
| | Thumbturn Adaptor |

Getting Started

- To use SwitchBot Lock, you will need:
- A smartphone or tablet with Bluetooth 4.2 or above.
 - SwitchBot app (available via Apple's App Store or Google Play Store).
 - A SwitchBot account, you can register for free via our app or sign in directly.
 - If you need to control SwitchBot Lock remotely, receive notifications or use third-party services, you must first set up SwitchBot Hub Mini.
 - Cross head screwdriver (included in the package).
 - Wet wipe (included in the package).



iOS 11.0+



Android OS 5.0+

Find Out More

Please visit support.switch-bot.com/hc/en-us/sections/4408365198103 for more details.



Specifications

Model: W1601700
Color: Black
Material: PC+ABS
Size: 111.6 x 59 x 73.2mm (4.4 x 2.3 x 2.9 in.)
Weight: 253 g (8.9 oz) (with batteries)
Power Source: 2 CR123A batteries
Battery Life: Approximately 6 months
Operating Environment: Indoor only
System Requirements: iOS 11.0/
Android OS 5.0 or later
Communication Method: Bluetooth 5.0
Operating Temperature: -10 °C to 45 °C (14 °F to 113 °F)
Operating Humidity: 10 % to 90 % RH

Troubleshooting

Please visit support.switch-bot.com/hc/en-us/sections/4408365197079 for more details.



Safety Information

- Keep your device away from heat and humidity, and make sure it does not come into contact with fire or water.
- This product is a precision-based electronic product, please avoid physical damage.
- Do not attempt to disassemble, repair, or modify your device.
- Do not use your device where wireless devices are not allowed.

Precautions

- The product cannot unlock if the battery runs out entirely. Please regularly check on the app or the LED indicator light to ensure that the battery level is not too low and replace when needed. Please also bring your key to avoid being locked out.
- This product is for indoor use only.
- If you notice any product malfunction, please stop using immediately and contact our Customer Support Team.

Return and Refund Policy

This product has a one-year warranty which begins from the date of purchase. The following situations do not fit the Return and Refund Policy.

- Intended damage or abuse.
- Inappropriate storage (damages caused by dropping or soaking in water).
- Modifying or repair of product.
- Natural wearing of product.
- Natural disasters.

Contact & Support

Setup and Troubleshooting:
support.switch-bot.com
Support Email:
support@wondertechlabs.com

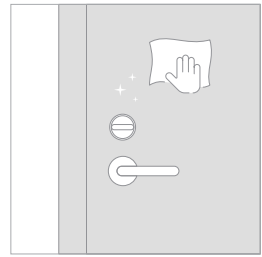
Feedback: If you have any concern or problem when using our product, please kindly send feedback from the Profile > Feedback page in the SwitchBot app.

Installation Guide

Step 1: Clean the Installation Surface

Before installing SwitchBot Lock, please make sure that the surface for installation is free from dirt or dust as this may affect your device when installing and may increase the chance of dropping at a later date.

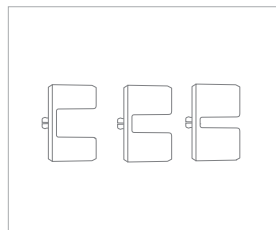
Use the wet wipe provided in the package or a cloth with neutral detergent to clean the installation area on your door.



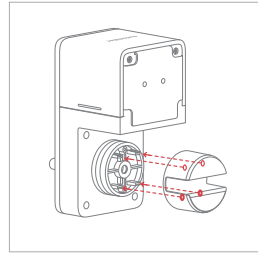
Step 2: Install SwitchBot Lock

1. Choose appropriate sized thumbturn adaptor.

There are 3 different adaptors provided, one has already been installed on SwitchBot Lock.



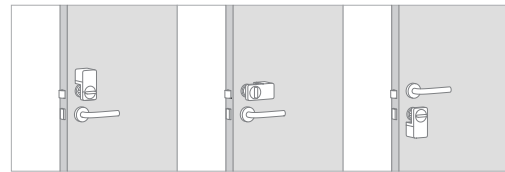
Install the thumbturn adaptor that suits your lock, once installed successfully you should hear a clicking sound.



2. Confirm the place of installation and direction of the SwitchBot Lock.

Confirm the following based on the position of your lock and handle:

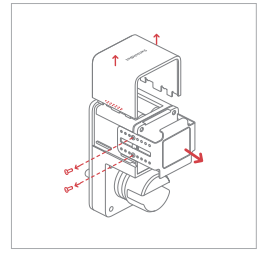
- Sufficient space near the thumbturn for installing the back of SwitchBot Lock's main unit stand.
- SwitchBot Lock does not affect the use of the door handle.



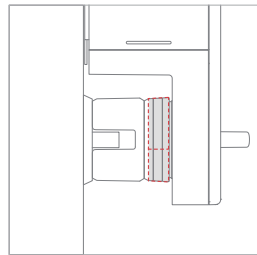
3. Adjust the height of SwitchBot Lock

You can match the height of your thumbturn by adjusting the main unit stand.

Open the battery case cover, use the cross head screwdriver to unscrew the screws on the stand, pull the stand outwards to change the height.



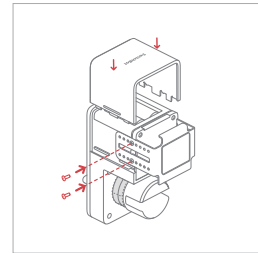
Put the main unit stand next to your door, don't remove the protective layer of the double sided tape yet. For smooth operation, keep a 1 to 2 mm gap between the inside of the thumbturn adaptor and the thumbturn. The thumbturn adaptor should cover more than half the depth of the thumbturn.



Hold SwitchBot Lock firmly, turn the thumbturn and check if you can lock and unlock your door smoothly.



Once confirmed with the appropriate height of the stand, screw all the screws and close the battery case cover.

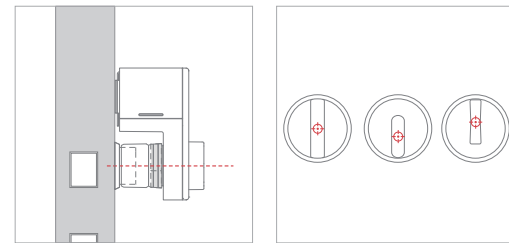


4. Install SwitchBot Lock on your door

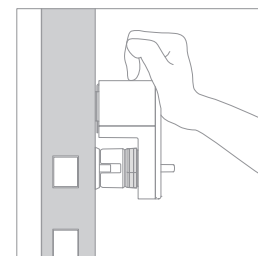
Attention: Please make sure that your installation surface is free from dirt and dust. This may affect the lock and increase the chance of falling later.

Remove the double sided tape on the main unit stand, align the center of the adaptor to the thumbturn's axis and install it on the door as before.

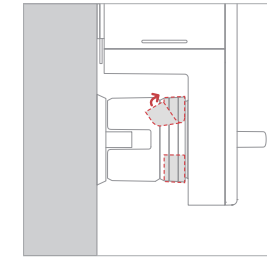
The axes of some adaptors may differ, please try to align them as precisely as you can.



Push SwitchBot Lock's main unit against the door for at least 2 minutes.



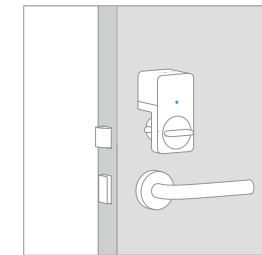
After installing the main unit of SwitchBot Lock, you must remove the fixing tape on the side of the adaptor.



Congratulations! You have completed SwitchBot Lock's installation.

Step 3: Add Device and Calibrate

Remove the battery insulation sheet. After SwitchBot Lock is powered on, the LED indicator light on the front will blink, meaning that the device is waiting to be paired.



Open the SwitchBot app and tap the + icon on the top right corner of the homepage, choose the lock icon and add your device. Please follow the instructions on the app to complete adding the device.

LED Indicator Light

| LED Indicator Light | Description |
|-------------------------------------------------|----------------------------------------|
| Blue light flashes slowly | Waiting for pairing/upgrading firmware |
| Blue and red light flash slowly and alternately | Pairing failed/firmware upgrade failed |
| Steady green light | Successfully locked/unlocked |
| Steady red light | Low battery/unusual activity |

Please visit support.switch-bot.com for more details.

Battery Replacement

When the battery level drops to lower than 20%, your device will notify you by flashing red and making a sound every time you lock/unlock the device. Please replace the 2 CR123A batteries by opening the main unit's battery case cover as soon as possible.

Reset to Factory Settings

If you will not be using SwitchBot Lock, please delete it on the SwitchBot app Lock Settings page. Once the device is deleted, all data stored on the device will reset to factory settings. Please be careful when doing so.

Please visit support.switch-bot.com for more details.

Disclaimer

• This product is only used as a door locking control device and cannot prevent theft completely. In the event of a burglary, our company assumes no responsibility or liability for any loss or damage suffered by any person as a result of using the product.

NCC 警語 :

取得審驗證明之低功率射頻器材，非經核准，公司、商號或使用者均不得擅自變更頻率、加大功率或變更原設計之特性及功能。低功率射頻器材之使用不得影響飛航安全及干擾合法通信；經發現有干擾現象時，應立即停用，並改善至無干擾時方得繼續使用。前述合法通信，指依電信管理法規定作業之無線電通信。低功率射頻器材須忍受合法通信或工業、科學及醫療用電波輻射性電機設備之干擾。

CE Warning

Manufacturer's Name: Woan Technology (Shenzhen) Co., Ltd. This product is a fixed location. To comply with RF exposure requirements, a minimum separation distance of 20 cm must be maintained between the user's body and the device, including the antenna. Use only the supplied or an approved antenna. This device in compliance with the essential requirements and other relevant provisions of directive 2014/53/EU. All essential radio test suites have been carried out.

1. CAUTION : RISK OF EXPLOSION IF BATTERY IS REPLACED BY AN INCORRECT TYPE. DISPOSE OF USED BATTERIES ACCORDING TO THE INSTRUCTIONS
2. The device complies with RF specifications when the device used at 20 cm from your body

Importer Name: Amazon Services Europe
Importer Address: 38 Avenue John F Kennedy, L-1855 Luxembourg, Art4-EURep@amazon.com

FCC Warning

This device complies with part 15 of the FCC Rules. Operation is subject to the following two conditions: (1) This device may not cause harmful interference, and (2) this device must accept any interference received, including interference that may cause undesired operation. Any changes or modifications not expressly approved by the party responsible for compliance could void the user's authority to operate the equipment.

This equipment has been tested and found to comply with the limits for a Class B digital device, pursuant to part 15 of the FCC Rules. These limits are designed to provide reasonable protection against harmful interference in a residential installation. This equipment generates uses and can radiate radio frequency energy and, if not installed and used in accordance with the instructions, may cause harmful interference to radio communications. However, there is no guarantee that interference will not occur in a particular installation.If this equipment does cause harmful interference to radio or television reception, which can be determined by turning the equipment off and on, the user is encouraged to try to correct the interference by one or more of the following measures:

- Reorient or relocate the receiving antenna.
- Increase the separation between the equipment and receiver.
- Connect the equipment into an outlet on a circuit different from that to which the receiver is connected.
- Consult the dealer or an experienced radio/TV technician for help. The device has been evaluated to meet general RF exposure requirement. The device can be used in portable exposure condition without restriction.

FCC RF exposure statement:
The equipment complies with FCC Radiation exposure limit set forth for uncontrolled environment. This equipment should be installed and operated with minimum distance 20 cm between the radiator and your body.