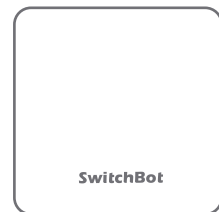


SwitchBot Hub Mini

User Manual



In The Box



USB cable



Hub Mini

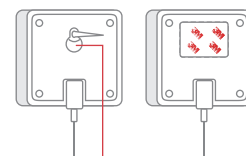
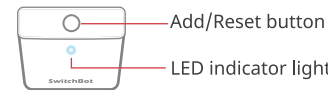


3M sticker



User manual

Device Instructions



Keyhole slot

Getting Started

- 1 Connect the USB cable to Hub Mini and a 5V 1A adapter.
- 2 Get the SwitchBot app.

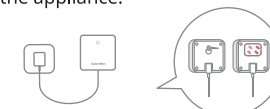


- 3 Create a SwitchBot account and sign in from the app's Profile page. Then add Hub Mini to your account. Learn more at, support.switch-bot.com/hc/en-us/articles/360037753974

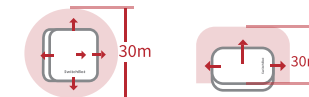


Placement Tips

Place Hub Mini on a flat surface or hang it on a wall within the infrared signal range of the appliance.



Infrared Signal Range



Vertical: 360°

Horizontal: 180°

Control Home Appliance

* Appliances that use Bluetooth remote control are not supported.

Hub Mini controls your home appliance through its built-in infrared receivers and emitter. To add a new remote control in the SwitchBot app, we recommend you to follow our comprehensive online tutorial. Learn more at, support.switch-bot.com/hc/en-us/articles/360038240833



www.switch-bot.com

Setup and Troubleshooting: support.switch-bot.com
Support Email: support@wondertechlabs.com

SwitchBot

Scene

You could create automations or scenes with Hub Mini. You could set different rules to automate SwitchBot devices and home appliances. Learn more at, support.switch-bot.com/hc/en-us/articles/360037754154



Google Assistant, Alexa, Siri, IFTTT and More

Control your appliances, SwitchBot devices, and scenes with voice commands and other web services. Learn more at, support.switch-bot.com/hc/en-us/sections/360005960714



Factory Reset

You can reset your Hub Mini to factory settings by long pressing the button on the top of it for 15 seconds or until the LED light starts blinking.

Return and Refund Policy

SwitchBot Hub Mini has one year warranty (start from the purchasing day). The situation below do not fit the Return and Refund Policy

- Intended damage or abuse.
- Inappropriate storage (drop down or soaking in water).
- User modify or repair.
- Using loss.
- Force majeure damage (natural disasters).

If you have any concern or problem when using our products, please kindly send feedback from the Profile > Feedback page in the SwitchBot app.

FCC Warning

This device complies with part 15 of the FCC Rules. Operation is subject to the following two conditions: (1) This device may not cause harmful interference, and (2) this device must accept any interference received, including interference that may cause undesired operation. Any Changes or modifications not expressly approved by the party responsible for compliance could void the user's authority to operate the equipment.

This equipment has been tested and found to comply with the limits for a Class B digital device, pursuant to part 15 of the FCC Rules. These limits are designed to provide reasonable protection against harmful interference in a residential installation. This equipment generates uses and can radiate radio frequency energy and, if not installed and used in accordance with the instructions, may cause harmful interference to radio communications. However, there is no guarantee that interference will not occur in a particular installation. If this equipment does cause harmful interference to radio or television reception, which can be determined by turning the equipment off and on, the user is encourage to try to correct the interference by one or more

of the following measures:

- Reorient or relocate the receiving antenna.
- Increase the separation between the equipment and receiver.
- Connect the equipment into an outlet on a circuit different from that to which the receiver is connected.
- Consult the dealer or an experienced radio/TV technician for help. The device has been evaluated to meet general RF exposure requirement. The device can be used in portable exposure condition without restriction.

FCC RF Exposure statement:

This equipment complies with FCC Radiation exposure limit set forth for uncontrolled environment. This equipment should be installed and operated with minimum distance 20cm between the radiator and your body.

CE Warning

Manufacturer's Name: Woan Technology (Shenzhen) Co., Ltd.
Sample Description: SwitchBot Hub Mini
Trade Mark: SwitchBot
Model number: W0202200
Operating Temperature: -10°C to 60°C

This product is a fixed location. To comply with RF exposure requirements, a minimum separation distance of 20cm must be maintained between the user's body and the device, including the antenna. Use only the supplied or an approved antenna. This device in compliance with the essential requirements and other relevant provisions of Directive 2014/53/EU. All essential radio test suites have been carried out.

1. CAUTION : RISK OF EXPLOSION IF BATTERY IS REPLACED BY AN INCORRECT TYPE. DISPOSE OF USED BATTERIES ACCORDING TO THE INSTRUCTIONS.

2. The device complies with RF specifications when the device used at 20cm from your body.