



1. INSTALLATION

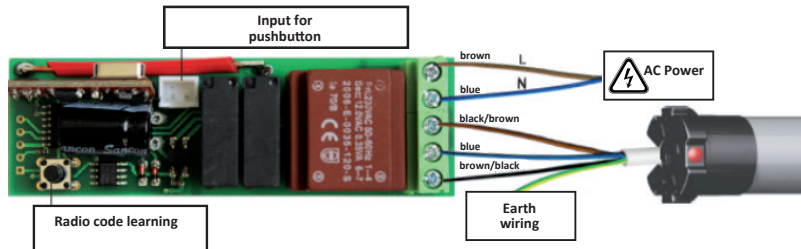
SAFETY TIPS

- WARNING: Important safety instructions for people, READ CAREFULLY when you see this symbol**
This product must only be used for its intended purpose. Any other use is dangerous. Follow all instructions as improper installation may result in serious bodily injury. Keep these warnings together with the installation and operation manuals that come with the device.
- Always cut off the power before performing any intervention**
- Always double check the system is properly connected to the earth**
Installation must be carried out by expert qualified personnel who knows the potential hazards associated and must fully comply with the outstanding current regulations. Use of the product must be restricted to its intended use. Any other use is to be considered dangerous and therefore forbidden.
- Do not allow children to play with the fixed command devices.**
Keep any remote control devices (i.e. transmitters) away from children to prevent the system from being accidentally activated.
Keep the system regularly maintained. Use only Proteco's original spares. Users are strictly forbidden to carry out any changes on the system. Proteco Srl is not liable for any damage resulting from improper, wrongful or unreasonable use.

2. TECHNICAL FEATURES

Radio capacity Use Radio memory	1 CH single automation 15 codes	Power supply Load capacity Code type	220Vac/50Hz 400W rolling code	Frequency Working temperature Protection class	433.92 MHz -20 C° < +60 C° IP44
---------------------------------------	---------------------------------------	--	-------------------------------------	--	---------------------------------------

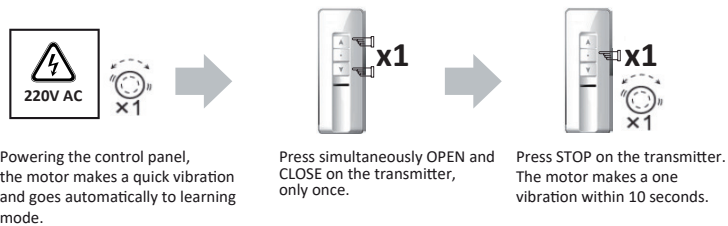
3. WIRING



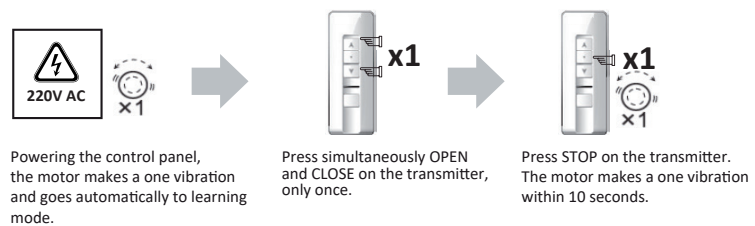
Before storing, copying or deleting any radio code on the 5-ch transmitter, go to the desired position using the LED slider. It is possible to command 5 different systems simultaneously, just select all LED positions on the transmitter (the 5 LED lights must be ON)

4. RADIO CODE LEARNING

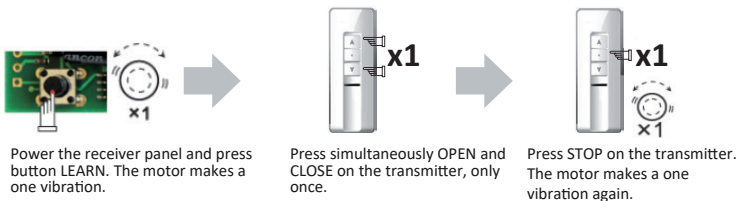
1 DIRECT LEARNING FROM POWER SUPPLY / 1CH



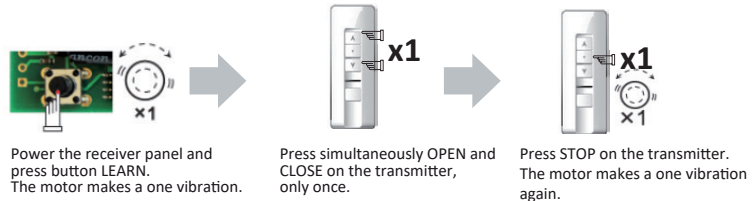
2 DIRECT LEARNING FROM POWER SUPPLY / 5CH



3 LEARNING FROM THE RECEIVER PANEL / 1CH



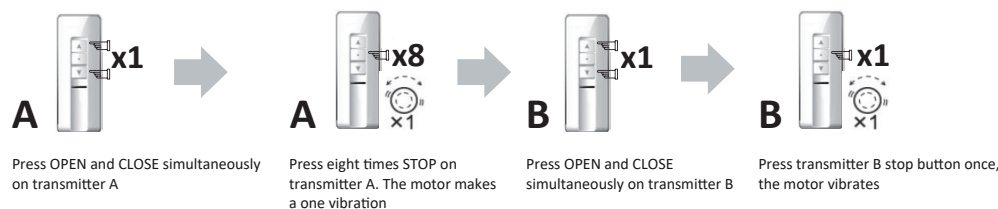
4 LEARNING FROM THE RECEIVER PANEL / 5CH



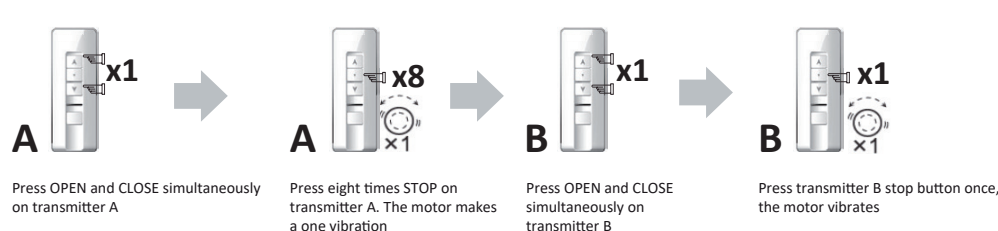
5. RADIO CODE COPYING

1 HOW TO COPY A 1-CH TRANSMITTER

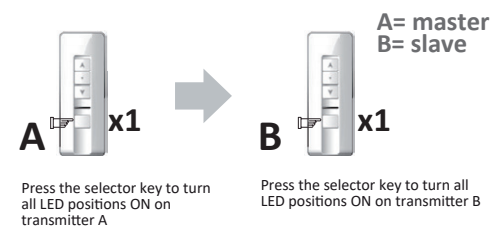
A= master
B= slave



2 HOW TO COPY A SINGLE RADIO CHANNEL ON THE 5-CH TRANSMITTER



3 HOW TO COPY ALL RADIO CHANNELS ON THE 5-CH TRANSMITTER

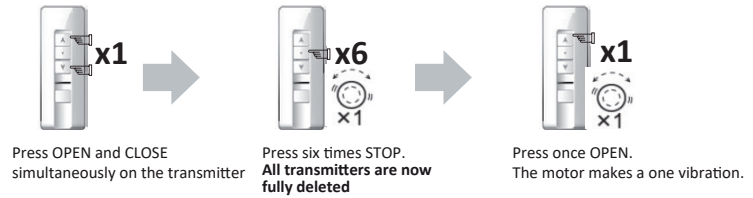


6. RADIO CODE DELETING

1 DELETING ALL 1-CH TRANSMITTERS



2 DELETING ALL 5-CH TRANSMITTERS



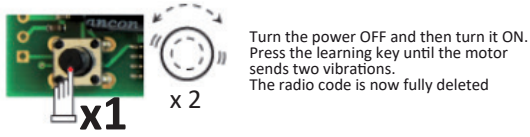
3 DELETING A SINGLE 1-CH TRANSMITTER



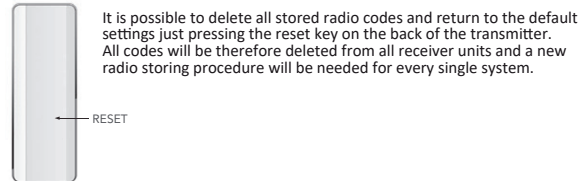
4 DELETING A SINGLE 5-CH TRANSMITTER



5 DELETING RADIO CODES 1CH/5CH DIRECT FROM THE RECEIVER UNIT

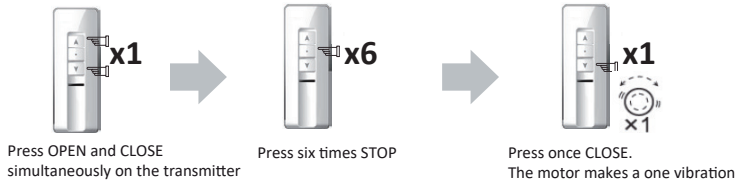


6 SETTINGS RESET 1CH / 5CH

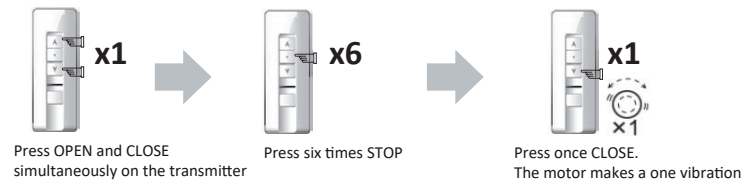


7. SWITCHING THE DIRECTION OF THE PUSH BUTTON

1 1CH

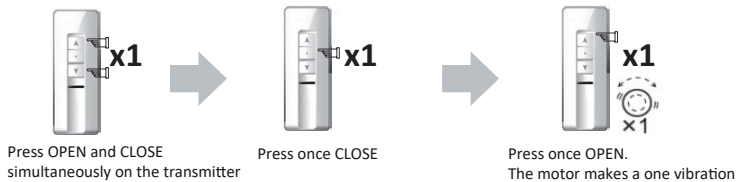


2 5CH

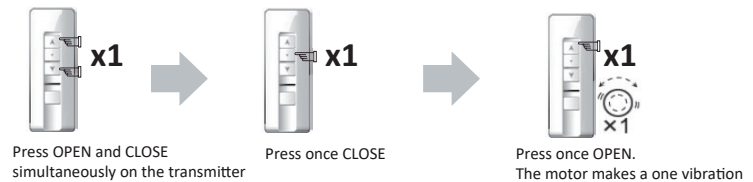


8. STEP BY STEP MODE

1 1CH

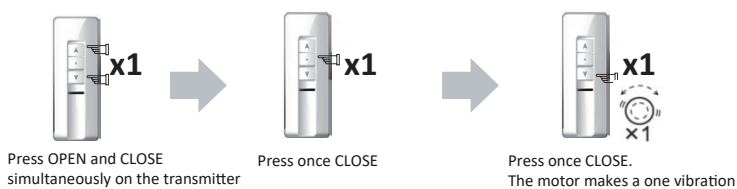


2 5CH



9. DESACTIVATING THE STEP BY STEP MODE

1CH



2 5CH



10. USING A WALL PUSHBUTTON

It is possible to connect a wall pushbutton to command manually settings, opening and closing the system.

11. COMPLIANCE DECLARATION

Proteco Srl declares the receiver PTPQ01W complies with the essential requirements of RED 2014/53/CE for its intended use and LVD 2014/35/CE.

Marco Gallo
Managing Director
Marco Gallo