

STANDALONE DVR Recording Systems



H.264

Mainstream H.264 solution supplier

3 years' H.264 development experience
3 years' Continuous improvement based on market feedback
RMA rate as low as 1.2% in 2009

Main Screen



- Clear and sharp image
- Easy and graphical operation
- Fast login for records
- Full Virtual keyboard
- PTZ control- presets, cruise, track and auto scan
- Audio control
- Virtual PTZ
- Two Way Audio

Basic & Live Settings



- VGA resolution up to 1280X1024.
- Device name and ID editable.
- Language setting
- DST
- Channel name editable.
- Channel security by hiding live video/ name.
- Color adjustments
- Spot out dwell time adjustable
- Masking- 3 areas per channel.

RECORD



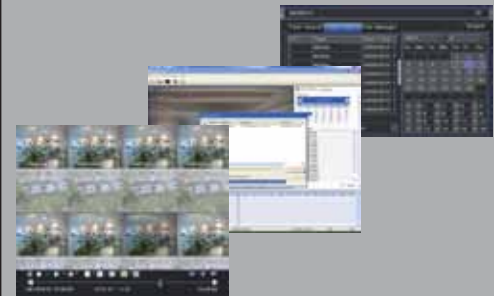
- CIF Resolution (D1 for lower fps)
- Video quality different from remote.
- Selectable Frame rate for each channel.
- Audio recording (4 audio available).
- DATE / TIME position on the screen
- Easy and graphical schedule setting by mouse

ALARM & MOTION



- Multi zone Motion Detect
- Motion Sensitivity
- Pre/Post record
- Up to 16 Alarms In and 4 Alarm Out
- Video loss alarm
- Full HDD alarm
- Motion To record, Alarm, PTZ, buzzer, full screen

PLAYBACK & BACKUP



- Smart search (time, events, files)
- Full channel real time playback
- Support deleting and locking recorded files
- Dragging bar for quick playback
- Back up in AVI format
- Express backup to USB/DVDRW with DVR player automatically packed

NETWORK



- Support Static IP, DHCP, PPOE, DDNS
- Support XP / VISTA.
- Fast connectivity.
- Dual Stream
- Remote Live view and Audio.
- Date & Time line table for playback.
- Full Channel playback
- Support Snap Shots.
- Color adjustment.
- Full remote setup

Mobile Phones



- Support mobile view by - Pocket PC Phone, Windows Mobile, Symbian, iPhone, Google phone.
- Support Live View and PTZ Control.
- Support 4ch view.
- Support multi site.
- Support Audio

CMS



- Free CMS Software-client management program which main function is to centralize all devices together and realize management of parameters and authorization.
- Support 64 channels in one screen, and up to 100 different locations and Up to 1024 cameras.
- CMS support 3 main function:
 - View the live site
 - Device configuration
 - Video search, playback and backup.

**SA-4100N
SA-8200N**

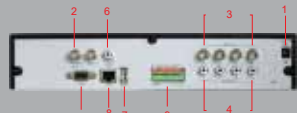


● Front Panel



- 1. Indicators
- 2. Function key
- 3. Direction/Multi screen key
- 4. Power
- 5. IR receiver
- 6. USB 2.0

● SA-4100N Rear Panel



- 1. Power
- 2. 4. Video Out(BNCx2)
- 3. Video In(BNCx4)
- 4. Audio In(RCAx4)
- 5. VGA Out
- 6. Audio Out (RCAx1)
- 7. USB Mouse
- 8. LAN
- 9. Alarm In/Out RS485

● SA-8200N Rear Panel



- 1. Video Out(BNCx2)
- 2. Video In(BNCx8)
- 3. Audio In(RCAx4)
- 4. VGA Out
- 5. Audio Out(RCAx1)
- 6. USB Mouse
- 7. LAN
- 8. Alarm In/Out RS485
- 9. Power



Specifications

MODEL	SA-4100N	SA-8200N
Video Compression	Standard H.264 Baseline	
Video In	Composite: BNCx4	Composite: BNCx8
Video Out	Composite: BNCx2, VGAx1	
Display Resolution	CVBS: 720x576(PAL),720x480(NTSC) VGA: 1280x1024	
Recording Resolution	352x288(CIF),704x576(D1) (PAL);352x240(CIF),704x480(D1) (NTSC)	
Display Frame Rate	100FPS(PAL),120FPS(NTSC)	200FPS(PAL),240FPS(NTSC)
Recording Frame Rate	100FPS-CIF, 25FPS-D1(PAL) 120FPS-CIF, 30FPS-D1(NTSC)	200FPS-CIF, 50FPS-D1(PAL) 140FPS-CIF, 60FPS-D1(NTSC)
Audio In	RCAx4	
Audio Out	RCAx1	
Alarm In	NO or NC 4CH	NO or NC 8CH
Alarm Out	Relay out 1CH	
Recording Mode	Manual, timer, motion detection, sensor	
Triplex/Pentaplex	Pentaplex	
Network Interface	RJ45 10/100M Self-adaptive	
Remote acces	IE browser	
Communication Interface	RS485 x 2 (For PTZ and keyboard), USB 2.0 x 2	
HDD	SATA x1	
Playback	Max 4Ch	Max 8Ch
Dual-stream	Individual Network video stream and local recording stream, set separately	
Backup media	Network, USB drive	
Control interface	Mouse, Front panel, Remote control, keyboard	
Dimension	W300 x D260 x H55mm	
Power Supply	12V	

SA-16400NE



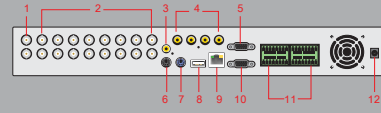
● Front Panel



- 1. Number /CH key
- 2. Function key
- 3. Indicators
- 4. Direction/Multi screen key
- 5. IR receiver
- 6. USB



● SA-16400NE Rear Panel



- 1. Video Out(BNCx2)
- 2. Video In(BNCx16)
- 3. Audio Out(RCAx1)
- 4. Audio In(RCAx4)
- 5. RS232
- 6. S-video
- 7. PS/2
- 8. USB Mouse
- 9. LAN
- 10. VGA Out
- 11. Alarm In/Out RS485
- 12. Power

Specifications

MODEL	SA-16400NE
Video Compression	Standard H.264 Baseline
Video In	Composite: BNCx16
Video Out	Composite: BNCx2, VGAx1, HDMI (Optional)
Display Resolution	CVBS: 720x576(PAL),720x480(NTSC) VGA: 1280x1024
Recording Resolution	352x288(CIF),704x576(D1) (PAL);352x240(CIF),704x480(D1) (NTSC)
Display Frame Rate	400FPS(PAL),480FPS(NTSC)
Recording Frame Rate	400FPS-CIF, 100FPS-D1(PAL) 480FPS-CIF, 120FPS-D1(NTSC)
Audio In	RCAx4
Audio Out	RCAx1
Alarm In	NO or NC 16CH
Alarm Out	Relay out 1CH
Recording Mode	Manual, timer, motion detection, sensor
Triplex/Pentaplex	Pentaplex
Network Interface	RJ45 10/100M Self-adaptive
Remote acces	IE browser, CMS
Communication Interface	RS485 x 2 (For PTZ and keyboard), USB 2.0 x 2
HDD	SATA x2
Playback	Max 16Ch
Dual-stream	Individual Network video stream and local recording stream, set separately
Backup media	Network, USB drive, DVD-RW
Control interface	Mouse, Front panel, Remote control, keyboard
Dimension	W430 x D380 x H55mm
Power Supply	12V