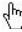


Quick Start Guide

24/32-Ch DVR

1. Install Hard Drive & DVD Writer

1.1 Install Hard Drive

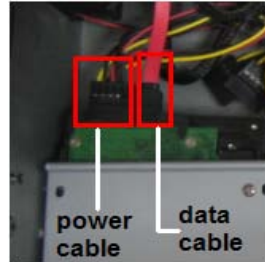
 **Notice:** 1. this series support eight(optional) or four SATA hard drives. Please use the hard drive the manufacturers recommend specially for security and safe field. Here take eight SATA hard drives installation for example.

2. Please calculate HDD capacity according to the recording setting. Please refer to "Appendix B Calculate Recording Capacity".

Step 1: Unscrew and open the case and then unscrew the screws in the both sides to take out of the upper iron bar as shown below:



Step 2: Put the HDD under the lower iron bar and let the screw holes of the HDD aim at the iron bars'. Then screw firmly and connect the power and data cables. The pictures are shown as follows:



Step 3: Install other three HDD according to above-mentioned method. Then cover the upper iron bar and screw it firmly. Put the HDD under it and screw firmly as shown below:



Step 4: Install other three HDD under the upper iron bar as shown below:



Step 5: Cover the back cover of the device and screw firmly.

1.2 Install DVD Writer

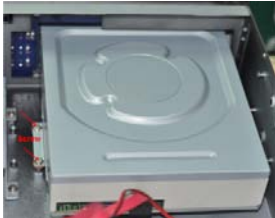
Step 1: Unscrew and open the case and then unscrew the screws in the both sides to take out of the upper iron bar as shown below:



Step 2: Install the DVD holder attached with the device. Please let the screw holes of the DVD aim at the holder's. Try to place the holder farther away from the front and then screw firmly. Then, put the DVD with the holder into the case and let the screw holes of the case aim at the holder's. Next, screw them firmly.



Step 3: Connect the power and data cables and install the upper iron bar. Then, screw firmly with screws in the both sides.



Note: If the user installs a DVD, he can only install 4 HDD disks due to too much room taken up.

2 Connections

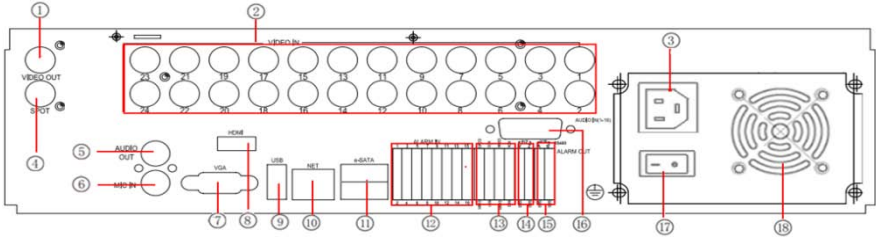


Fig 2-1 Rear Panel for 24-ch

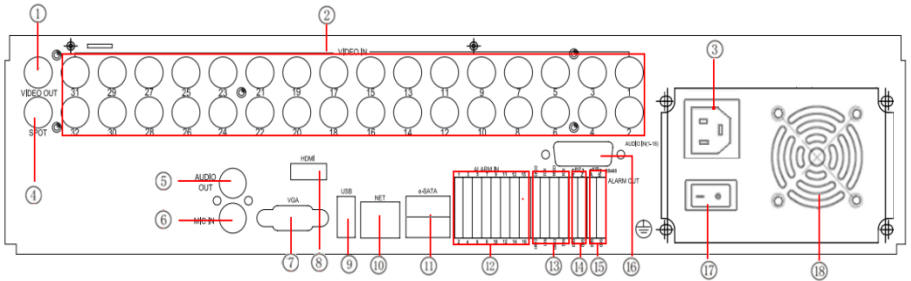


Fig 2-2 Rear Panel for 32-ch

Item	Name	Description
1	Video out	Connect to monitor
2	Video in	Video input channels (from 1-24 for 24-ch DVR/ 1-32 for 32-ch DVR)
3	Power input	AC 110V or 110V
4	Spot	Connect to monitor as an AUX output channel by channel. Only video display, no menu show
5	Audio out	Audio output, connect to the sound box
6	MIC IN	Talk
7	VGA port	VGA output, connect to monitor
8	HDMI port	Connect to high-definition display device
9	USB port	To connect external USB devices like USB flash, USB HDD for backup or update firmware; or connect to USB mouse
10	LAN	Network port
11	E-SATA	Connect to HDD for backup
12	Alarm in	Connect to external sensor 1-16
13	Alarm out	4ch relay output. Connect to external alarm.
14	P/Z	Connect to speed dome
15	K/B	Connect to keyboard
16	Audio in	16 CH Audio input
17	Power switch	Switch on/off
18	Fan	For cooling the device

3. Power on

Step1: connect with the power and switch on the power button near the power port on the rear panel.

Step2: the device will be loaded, and the power indicator will display blue.

Step3: before start, a WIZZARD window will be pop-up and show some information about time zone, time setup, network configuration, record configuration and disk management. User can setup here and refer to the concrete setup steps from the corresponding chapters. If users don't want to setup Wizard, please click Exit button to exit.

After the device power on, if there is no menu or only has live image display, user can long press ESC button to switch.

Notice: this serial device can only display menu on VGA monitor or BNC monitor at one time, if there is live image display without menu display, please check up whether other device has menu display firstly, or long press ESC key to wait for login dialog box to appear. Long press ESC key can switch the output between BNC and VGA.

4. Basic setup

4.2 Accessing the DVR menus

4.1.1 Login

Press the MENU button which will bring the LOGIN dialogue box and enter the user name: admin and password: 123456

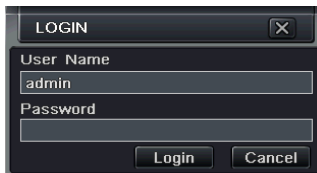


Fig 4-1 Login

4.1.2 Main menu setup

Right click or press ENTER button on the front panel can enter into the main menu. Menu-System refer to Fig 4-2



Fig 4-2 Main menu setup

Basic configuration: user can set video system, menu language, audio, time and authorization check.

Live configuration: User can set name/time display, picture color and hide

cameras.

Record configuration: User can set record quality, frame rate, resolution, time stamp and recycle.

Schedule configuration: users can set schedule for timer, motion detection, and sensor alarm respectively.

Alarm configuration: users can set sensor type, alarm trigger and buzzer alarm.

Network configuration: Users enable network function, and configure IP address, DDNS, transmission video parameters here.

User configuration: Administrator can add, delete users, and change their authorization

PTZ configuration: users can set protocol, baud rate, address, presets and auto cruise track here.

Advanced configuration: users can reboot the device and import & export data into or from mobile storage medium.

4.3 DVR recording modes

User need to install and format a HDD, and set all the record parameters before recording. There are four kinds of record modes.

4.3.1 Manual Record

User can press REC button on the front panel after quitting system setup. Press this button again to stop recording.

Or press REC button on remote controller. Click again to stop.

Or click REC button on the tool bar with mouse. Click again to stop.

4.3.2 Schedule Record

Enter into main menu—schedule configuration (refer to Fig 4-3). Users can set different schedule time for every day in one week. If user wants a special schedule for one day can use Holiday function.

The column means the seven days of a week from Monday to Sunday, the row means 24 hours of a day. Click the grid to do relevant setup. Blue means checked area, gray means unchecked area.

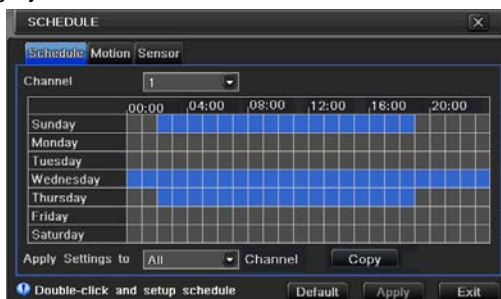


Fig 4-3 Schedule record setup

4.3.3 Motion Detection Recording

Motion detection recording: when there is a motion event detected, the camera will be triggered to record and have an alarm out.

Enter into main menu-alarm configuration-motion configuration (refer to Fig 4-4), enable Detection first;

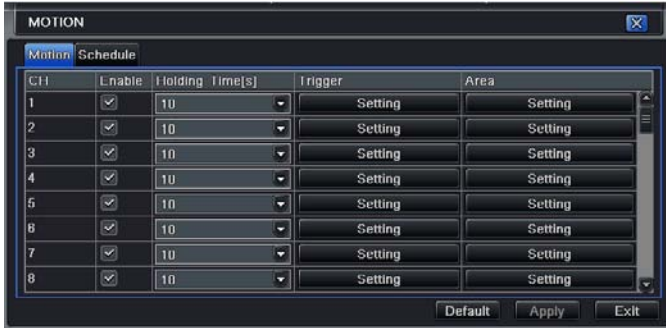


Fig 4-4 Motion detection interface

Enter Motion detection area (refer to Fig 4-5) to set Sensitivity and Detection area.



Fig 4-5 motion detection area setup

4.3.4 Alarm Recording

Enter into main menu-Alarm configuration-Sensor alarm (refer to Fig 4-6) to enable Detection first, and then setup the device type.

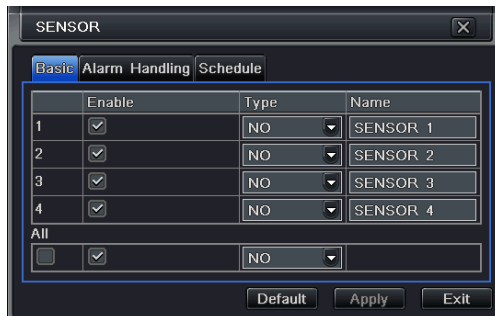


Fig 4-6 sensor alarm record

Enter into Trigger configuration to select alarm out, recording cameras and linked PTZ. Then set Alarm out hold time and Buzzer hold time. Click OK to save settings.

4.4 Playback

This unit supports live record playback, time search, event search and Image search.

4.4.1 Live playback


Click Play  button to playback the record. Refer to Figure4-7. User can do concrete operation by click the buttons on screen.



Fig 4-7 live playback

4.4.2 Time search

Enter into Search configuration, select Time search. If it recorded in a certain day, the date will show highlight.

Select a date, press Search button, click the time grid to set the play start time or input play record time manually. The selected time match the blue grid.

Click Play button. It will play from the time point where user set.

Click the relative buttons on the screen to do fast forward/rewind, pause, stop, and change the screen mode and re-search.

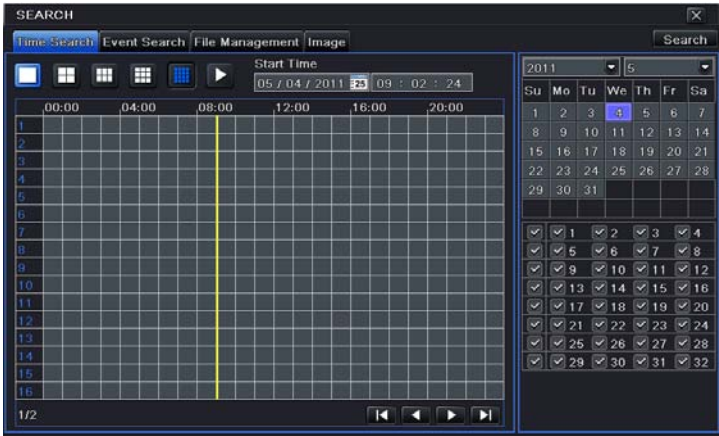


Fig 4-8 Time search

4.4.3 Event search

Enter into Search configuration, select Event search (refer to Fig 4-9), and choose a certain day in the event search interface.

Click Search button, the searched event information will displayed in the event list box, user can select date, channel, tick off Motion, Sensor or All accordingly.

Double click a video file to playback.

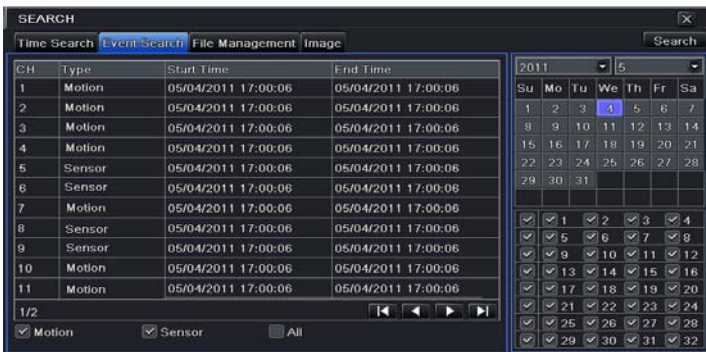


Fig 4-9 Event search

4.4.4 Image Search

In this interface, user can set start, end time and channels to search the captured images and save, lock or delete these images. There are at most 2000 images which can be saved in the SATA disk. If there are more images saved in the SATA disks than 2000 images, those additional images will supersede prior images. Double click the image with the left mouse, it will automatically playback from the time of the image captured.

4.5 Back up

This unit supports backup by built-in SATA DVD Writer, or with USB Flash and USB HDD.

Install DVD Writer (refer to Chapter1.2), enter into Backup interface (refer to Fig 4-10) to set the start & end time, select channels and then click Search button. The searched data will be displayed in the data backup list box.

Press Backup button to write video from HDD inside DVR. Click Start button to start backup.

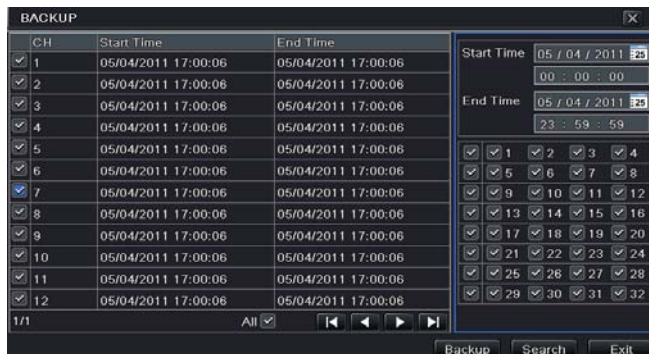


Fig 4-10 Backup setup

5 Remote Surveillance

In order to view the DVR from a network it must be connected to a LAN/WAN or internet. The network setup should be done accordingly.

5.1 Access DVR on LAN

- Please enter into Menu→Setup →Network Setup as shown in Fig 5-1.
- Input IP address, Subnet, Gateway. If using DHCP, please enable DHCP in both the DVR and the router. Enter into Menu → Information → Network, and user can check the network settings of the DVR.

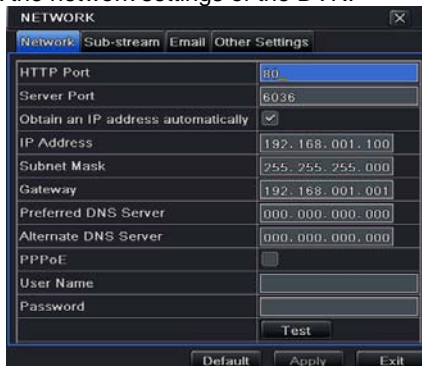


Fig 5-1 Network configuration

- Enter into Record Setup to set network video parameters like resolution, frame rate etc.
 - Open IE on a computer on the same network. Input the IP address of the DVR in IE address bar and press enter. If HTTP port is not 80, add the port number after IP address or domain name.
 - IE will download ActiveX component automatically. Enter the username and password in the subsequent window
- Note: If the ActiveX cannot be downloaded or installed, please refer to Appendix A Q7 in the user manual.**

5.2 Access DVR on WAN

1. Connect the DVR to internet through router or virtual server

- Please enter into Menu→Setup →Network Setup as shown in Fig 5-1.
- Input IP address, Subnet, Gateway. If using DHCP, please enable DHCP in both the DVR and the router.
- Forward IP address and port number in Virtual Server setup of the router or virtual server. Configure the firewall to allow accessing the DVR. (If the user has enabled the UPnP function in both the DVR and router, he can skip this step.)
- If users want to utilize dynamic domain name, please apply for a domain name in a DNS server supported by the DVR or router. Then add to the DVR or router.
- Open IE browser, input IP address, or dynamic domain name and enter. If HTTP port is not 80, add the port number after IP address or domain name.
- IE will download ActiveX automatically. Then a window pops up and asks for user name and password. Input name and password correctly, and enter to view.

2. Connect the DVR to Internet through dial-up ADSL

- Enter into the DVR's Main Menu→Setup→Network interface to enable PPPoE and then input user name and password received from your ISP. Next, click 'Apply'. The DVR will connect to the server and would give a confirmation message.
- When accessing the remote interface of DVR, user can input WAN IP to access directly (user can enter into Main menu→Information→Network interface to check IP address). The browser will download Active X control
- The following steps are the same as the connection way above.

450041220001
A0