

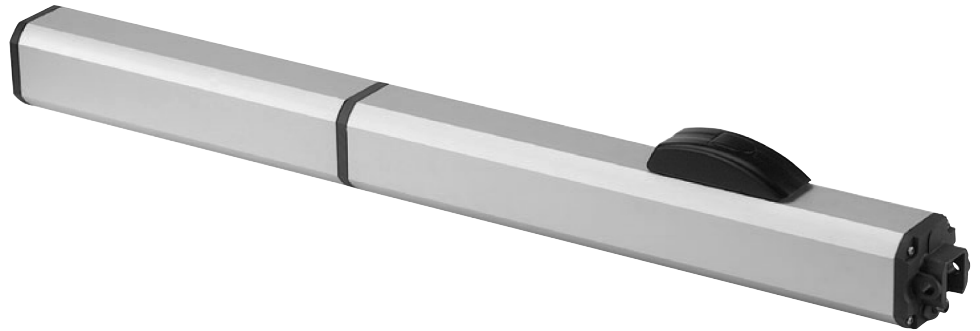


**Max width single leaf**

2,2 - 7 m (with electric lock)

**Use frequency (cycles/hour)**

50 - 70



- Key-protected, release device
- Extremely silent movement.
- Hydraulic lock resistant to intrusion attempts (mod. CBC - CBAC).



**230V SAFEzone system:**  
400 + E045S or E145S  
+ SAFEcoder



**GREENTech 230V system:**  
400 + E045S or E145S



### DIMENSIONS AND TECHNICAL SPECIFICATIONS

Model	400 CBC	400 SB	400 SBS	400 CBAC	400 CBAC L	400 SBS L
Power supply voltage	220-240V~ 50/60 Hz					
Electric motor	Asynchronous single phase					
Max. power	220 W					
Max expressed force	6200 N (*)		7750 N (*)	6200 N (*)	4650 N (*)	7750 N (*)
Rod max speed	10 mm/s (*)		7,5 mm/s (*)	10 mm/s (*)	15 mm/s (*)	7,5 mm/s (*)
Motor-pump unit capacity	1 lpm (*)		0,75 lpm (*)	1 lpm (*)	1,5 lpm (*)	0,75 lpm (*)
Rod travel		270 mm			390 mm	
Max. leaf opening angle	125°					
Operating ambient temperature	-20°C ÷ + 55°C					
Thermal protection	120°C					
Protection class	IP55					
Weight	8.6 Kg			10 kg		
Use frequency	70 cycles/hour		60 cycles/hour	70 cycles/hour	50 cycles/hour	40 cycles/hour
Max. leaf width	2.20 m	4,00 m (with electric lock)	7,00 m (with electric lock)	2.20 m		7,00 m (with electric lock)
Type of oil	FAAC HP OIL					
Mounting brackets	Rear attachment to be welded/screwed - front attachment to be welded					
Dimensions (LxDxH)	1034 x 85 x 119 mm			1277 x 85 x 119 mm		
Electronic equipment	Not included					

(\*) data referred to 230V~ 50Hz.

## FAMILY MODELS

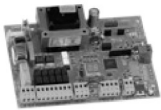
Model	Item code
400 CBC	104205
400 SB	104206
400 SBS	104203
400 CBAC	104201
400 CBAC L	104202
400 SBS L	104220

## PACKS

**400 includes:** a hydraulic operator with hydraulic lock in closing (**400 CBC**), without lock (**400 SB**), without hydraulic block for heavy leaves (**400 SBS and 400 SBS L**), a hydraulic operator with hydraulic lock in opening/closing (**400 CBAC and CBAC L**), installation accessories, a release key, a 400V 8 $\mu$ F thrust capacitor.

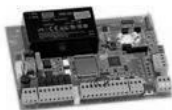
**Typical Installation Examples page. 290**

## ELECTRONIC CONTROL UNITS



**E045S control unit**  
Info at page 140

790077



**E145S control unit**  
Info at page 142

790076

## ACCESSORIES



**Enclosure mod. L for electronic control units**

720118



**Enclosure mod. E for electronic control units**

720119



**Enclosure mod. LM for electronic control units**

720309

>>



**Plate to be walled**

737604



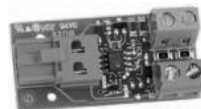
**Joint for RTA sheath**

710010



**SAFEcoder BUS magnetic absolute encoder (FAAC Patent)**

404040



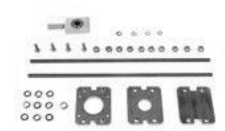
**BUS XIB interface (for E045 or E045S or E024S boards with photocell no BUS)**

790062



**Release lock with customised key**

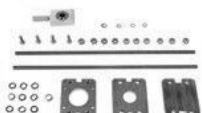
712501001-10



**Positive Stop - mechanical stops op/cl (can be integrated on mod. 400)**

490042

>>



**Positive Stop - mechanical stops op/cl (can be integrated on mod. 400 CBAC L)**

490043



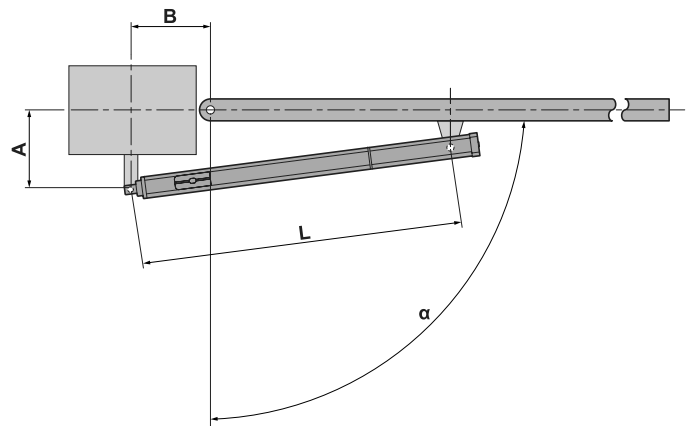
**Screwable rear brackets (kit of 2pcs.)**

490349

## NOTE

An electric lock should be installed for operators without hydraulic locking. The 400 L models avoid the use of niches in masonry pillars (FIG.1). The operator with lock is not recommended when there is no access to the manual release device (panelled leaves or no other access to the property).

## INSTALLATION DIMENSIONS (MM)



	$\alpha$	A	B	L
400	90°	130	130	960
	115°	100	120	
	125°	90	120	
400 L	90°	200	160	1200
	115°	170	160	
	125°	130	170	

For any other configuration please refer to the technical manual

## OTHER ACCESSORIES

**Key operated buttons**  
page 179

**Safety edges**  
page 190

**Transmitters and receivers**  
page 171

**Photocells and columns**  
page 187

**Flashing lights**  
page 197

**Various accessories**  
page 198