

VIDEOTEC
CATALOGUE

2006

2007

CCTV PRODUCTS

WWW.VIDEOTEC.COM





Videotec is not a complex or bureaucratic organization; we believe this enables us to continue improving our products and services, allowing *greater flexibility* in front of a rapidly changing market.

REAL MANUFACTURER REAL BRAND

From over *13.000 sqm production plants*, products distributed and installed all over the world.

WIDE RANGE OF AVAILABLE SOLUTIONS AND PRODUCTS

Videotec's products have been designed to operate perfectly in a wide range of applications and environments. Most products are *immediately available* thanks to high ex-stock capacity and fast delivery service.

R&D

The engineering team successfully develop products with ease of use, simplicity and durability combined with aesthetics into the whole range. Our ongoing commitment is to bring *new technologies* to the marketplace.

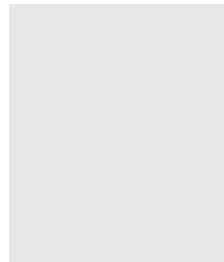
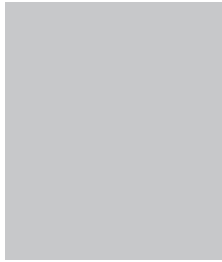
SALES AND TECHNICAL SUPPORT

Training programs for distributors, installers and users, instruction manuals and literature available in different languages, an interactive and updated website, and above all a *direct communication to the manufacturer* enable us to surpass customer's expectations.












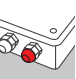


AUTOMATION

Production is carried out across fully automated assembly lines obtaining *cost-effective products* thanks to the scale economy.





INDEX

CAMERA HOUSINGS	4	
BRACKETS FOR HOUSINGS AND CAMERAS	12	
PAN&TILT AND CONTROLS	14	
VANDAL RESISTANT HOUSINGS	18	
STAINLESS STEEL HOUSINGS AND P&T	20	
EXPLOSION-PROOF SYSTEMS	24	
INTEGRATED POSITIONING SYSTEMS	28	
DISCREET SURVEILLANCE DOMES	32	
VIDEO SWITCHING	36	
CONTROL KEYBOARDS	38	
TELEMETRY	42	
VIDEO TRANSMISSION AND DISTRIBUTION	44	
INFRARED ILLUMINATORS	46	
MONITOR BRACKETS	48	



Designed to simplify installation and service, this housing range ensures total protection against a wide range of environmental conditions. From the side opening design which allows for easy access and camera mounting, to a full range of different mounting brackets and its environmental flexibility, these housings are the most versatile on the market. The full range of accessories, including sunshield, heater, camera power supply, blower and air filter, fan-assisted heater satisfy any installation requirement.



HOV SIDE OPENING ALUMINIUM HOUSING

- > Built in die-cast aluminium and ABS sunshield
- > IP66 (with cable glands or optional sealing rings)
- > Side opening
- > Installations with 3 standard cable glands and bracket or with cable management bracket
- > Available accessories: sunshield, heater, camera power supply, fan-assisted heater, blower and air filter, alarm tamper kit, integrated wiper

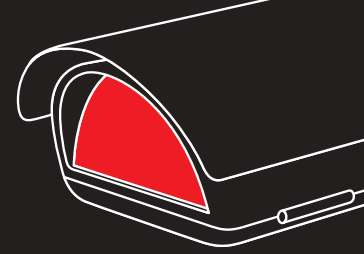


HOV + WBOV



HOUSINGS

THE LANDMARK FOR CAMERA HOUSINGS



VERSO

VERSO COMPACT



VERSO

SIDE OPENING POLYCARBONATE HOUSING

- > IP66 (with cable glands or optional sealing rings)
- > Side opening
- > Installations with 3 standard cable glands and bracket or with cable management bracket
- > Available accessories: sunshield, heater, camera power supply, fan-assisted heater, blower and air filter, alarm tamper kit

VERSO + WBJ



VERSO + WBOV



VERSO COMPACT

COMPACT MODEL OF VERSO

- > Completely built in polycarbonate
- > IP66 (with cable glands or optional sealing rings)
- > Side opening
- > Installations with 2 standard cable glands and bracket or with cable management bracket
- > Available accessories: sunshield, heater, camera power supply, fan-assisted heater



Videotec housings have been designed and constructed to protect cameras against agents and dust present in the atmosphere. The housings have been produced using extrusions and die-castings in highest quality aluminium and innovative tecnopolymer materials. The care taken during their manufacture ensures maximum solidity and reliability, further to an easy installation and service. These products are furnace painted with epoxypowder colour RAL9002, while bolts and screws used are in stainless steel. The numerous available accessories, like heater, camera power supply, blower and air filter, wiper and washer satisfy any installation requirement.

HEG

THE LARGEST HOUSING OF THE RANGE

- > Built in die-cast and extruded aluminium
- > IP66 (according to NEMA4)
- > Slide extractable body
- > 3 cable glands
- > Available version Mod. 036 with 3+1 and 6+1 poles connectors and 1 BNC complete with prewired cable for video input (instead of regular cable glands)
- > Available accessories: sunshield, heater, camera power supply, blower and air filter, wiper and washer, reinforced heater (for temperature down to -50°C, -58°F)



MOD. 036



HEG + VIP6A



HOUSINGS FOR IP CAMERAS

- > Designed with the most important IP cameras manufacturers, these new versions of housings are specific for installations with network cameras. The perfect working cooling system allows the reduction of the internal enclosure temperature: the main IP camera problems in outdoor installation are the high temperature developed from the camera itself and the difficulty to dissipate the heat efficiently in a standard weatherproof enclosure.

HOV COOLING SYSTEM



HEG



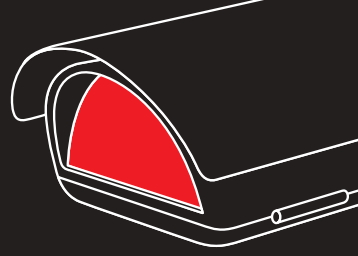
HOV



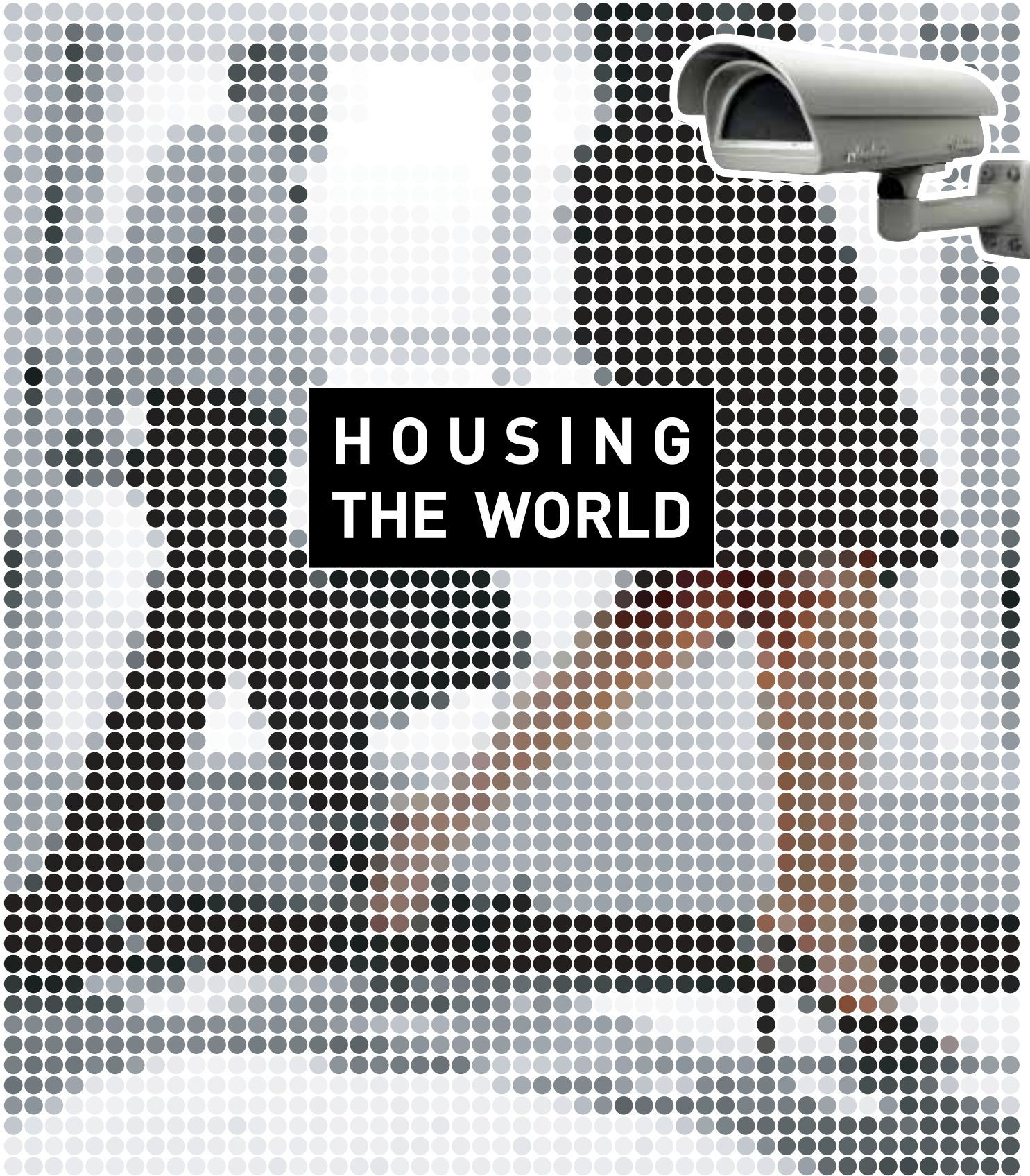
VERSO



CAMERA HOUSINGS



**HOUSING
THE WORLD**





HEP PROFESSIONAL WEATHERPROOF HOUSING

- > Built in die-cast and extruded aluminium
- > IP66 (according to NEMA4)
- > Slide extractable body
- > 2 cable glands
- > Version with 30 poles connector (model 032)
- > Version with 3+1 poles connector and BNC factory installed, complete with prewired cable for video input (model 038)
- > Available accessories: sunshield, heater, camera power supply, blower and air filter, double power heater (for temperature down to -40°C -40°F)

MOD. 032



MOD. 038



HEK ALUMINIUM-POLYMERIC HOUSING

- > Built in tecnopolymer and aluminium
- > IP66 (with cable glands or optional sealing rings)
- > Slide extractable body with hinged system
- > Installations with 3 standard cable glands and bracket or with cable management bracket
- > Available accessories: sunshield, heater, fan-assisted heater, camera power supply, blower and air filter

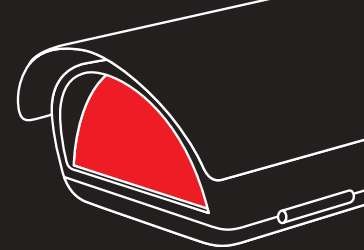


HEA STYLISH WEATHERPROOF HOUSING FOR GENERAL PURPOSE

- > Built in die-cast and extruded aluminium
- > IP66 (according to NEMA4)
- > Slide extractable body with hinged system
- > 2 cable glands
- > Available accessories: sunshield, heater, fan-assisted heater, camera power supply, blower and air filter



CAMERA HOUSINGS



HEB

VERSATILE LARGE WEATHERPROOF HOUSING WITH STANDARD OR CABLE MANAGEMENT BRACKET

- > Built in die-cast and extruded aluminium
- > IP66 (according to NEMA4) installed with cable glands or with optional sealing rings
- > Slide extractable body with hinged system
- > 3 cable glands and standard bracket or cable management bracket
- > Available accessories: sunshield, heater, fan-assisted heater, camera power supply, blower and air filter



HEB + WBOV



HEM

MEDIUM WEATHERPROOF HOUSING FOR GENERAL PURPOSE

- > Built in die-cast and extruded aluminium
- > IP66 (according to NEMA4)
- > Slide extractable body with hinged system
- > 2 cable glands
- > Available accessories: sunshield, heater, fan-assisted heater, camera power supply, blower and air filter



HET

MINI WEATHERPROOF HOUSING

- > Built in die-cast and extruded aluminium
- > IP66 (according to NEMA4)
- > Slide extractable body with hinged system
- > 2 cable glands
- > Available accessories: sunshield, heater, junction box with camera power supply



SUNSHIELD

Sunshield: protection against solar rays and reduction of housing internal temperature. Highly recommended for outdoor installation.

FAN ASSISTED HEATER

It allows the forced air circulation and homogeneous temperature inside the housing.

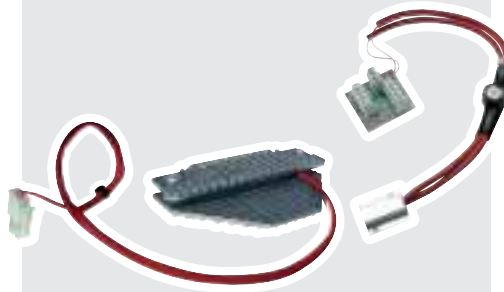


CAMERA POWER SUPPLY

Camera feeding circuit, which can be installed inside the housing, available in different versions: 115V AC or 230V AC input and 24V AC or 12V DC output.

WIPER

Wiper kit which can be directly installed on the housing body or integrated into the housing. It completes the support for the pump washing injector. Available in 24V AC and 230V AC versions.



HEATER

Circuit made up of a thermostatically controlled 20W or 40W heating element PTC (Ton $\leq 15^{\circ}\text{C}$, 59°F ; Toff $\geq 22^{\circ}\text{C}$, 71°F). It is available in 12V DC/24V AC voltage or 115/230V AC voltage.



WEATHERPROOF JUNCTION BOX

External junction box, weatherproof standard IP55, allowing the housing of wiring harnesses or auxiliary cards. The model containing the camera power supply card, available in the versions 230V AC input and 24V AC, max 400mA, or 12V DC output, max 1A, is particularly used combined with HET housings.

BLOWER

Blowing circuit with a thermostatically controlled cooling blower (Ton $\geq 35^{\circ}\text{C}$, 95°F ; Toff $\leq 20^{\circ}\text{C}$, 68°F) and air filter. It is available in 12V DC, 24V AC and 230V AC versions, pre-installed in the housing or as optional kit.



REINFORCED HEATING

Circuit made up of a thermostatically controlled double PTC (Ton $\leq 15^{\circ}\text{C}$, 59°F ; Toff $\geq 22^{\circ}\text{C}$, 71°F) or of a thermostatically controlled triple fan-assisted PTC (Ton $\leq 15^{\circ}\text{C}$, 59°F ; Toff $\geq 22^{\circ}\text{C}$, 71°F) for installations where external temperatures are very rigorous. Operating temperatures down to -40°C , -40°F , for the double heater, down to -50°C , -58°F , for the triple fan-assisted heater

ALARM TAMPER SWITCH

The alarm contact allows the checking of the eventual tampering.



WASHER AND RESERVOIR

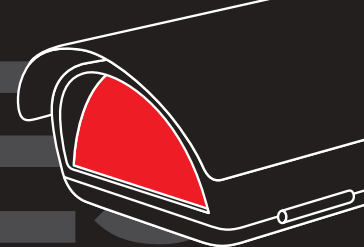
Glass washing kit with 5 l (1.3 gal) or 25 l (6.6 gal) reservoir. The pump is available in 24V AC and 230V AC. A special version of the washer and reservoir for high delivery is available for up to 30m (98.5ft)

SEALING RINGS FOR CABLE MANAGEMENT BRACKET

To be used with wall cable management bracket for IP66 weatherproof protection.



HOUSING ACCESSORIES



HOUSING AND ACCESSORIES FEATURES

	HEA	HEB	HEG	HEK	HEM	HEP	HET	HOV	VERSO	VERSO COMPACT
Useful internal area BxH, mm (in)	84x70 (3.3x2.7)	90x85 (3.5x3.3)	140x90 (5.5x3.5)	82x62 (3.2x2.4)	70x65 (2.7x2.5)	90x80 (3.5x3.3)	62x55 (2.4x2.1)	100x70 (3.9x2.7)	70x70 (2.7x2.7)	63x63 (2.4x2.4)
Useful length, mm (in)	260 (10.2) 300 (11.8)	260 (10.2) 320 (12.5)	365 (14.3) 450 (17.7)	260 (10.2) 320 (11.8)	220 (8.6) 260 (10.2) 300 (11.8)	260 (10.2) 320 (12.5)	100 (3.9) 160 (6.2) 220 (8.6) 300 (11.8)	250 (9.8)	270 (10.6)	210 (8.6)
IP rating	IP66	IP66 + cable glands	IP66	IP66 + cable glands	IP66	IP66	IP66	IP66 + cable glands	IP66 + cable glands	IP66 + cable glands
Cable glands	1xPG9 1xPG11	2xPG9 1xPG11	1xPG9 1xPG11	3xM20	1xPG9 1xPG11	2xPG9	1xPG9 1xPG11	2xPG9 1xPG11	2xPG9 1xPG11	1xPG9 1xPG11

ACCESSORIES

Sunshield	•	•	•	•	•	•	•	•	•	•
Heater 20W, 12V DC/24V AC	•	•	•	•	•	•	• except 100 mm	•	•	•
Heater 40W, 115/230V AC	•	•	•	•	•	•	• except 100 mm	•	•	•
Blower 12V DC	•	•	•	•	•	•		•	•	
Blower 24V AC	•	•	•	•	•	•		•	•	
Blower 230V AC	•	•	•			•		•	•	
Internal camera power supply 12V DC OUT	230 V AC IN 400mA max	100÷240 V AC IN 1A max	100÷240 V AC IN 1A max	100÷240 V AC IN 1A max	230 V AC IN 400mA max	230 V AC IN 400mA max		100÷240 V AC IN 1A max	100÷240 V AC IN 1A max	100÷240 V AC IN 1A max
Internal camera power supply 24V AC OUT	230 V AC IN 400mA max	230 V AC IN 400mA max	230 V AC IN 400mA max	230 V AC IN 400mA max	230 V AC IN 400mA max	230 V AC IN 400mA max		230 V AC IN 400mA max	230 V AC IN 400mA max	230 V AC IN 400mA max
Weatherproof junction box	•	•	•	•	•	•	•	•	•	•
Camera power supply 12V DC OUT in weatherproof junction box	100÷240 V AC IN 1A max	100÷240 V AC IN 1A max	100÷240 V AC IN 1A max	100÷240 V AC IN 1A max	100÷240 V AC IN 1A max	100÷240 V AC IN 1A max	100÷240 V AC IN 1A max	100÷240 V AC IN 1A max	100÷240 V AC IN 1A max	100÷240 V AC IN 1A max
Camera power supply 24V AC OUT in weatherproof junction box	230 V AC IN 400mA max	230 V AC IN 400mA max	230 V AC IN 400mA max	230 V AC IN 400mA max	230 V AC IN 400mA max	230 V AC IN 400mA max	230 V AC IN 400mA max	230 V AC IN 400mA max	230 V AC IN 400mA max	230 V AC IN 400mA max
Double heating 80W, 115/230V AC			•			•				
Triple fan assisted heater 120W, 115/230V AC			•							
Wiper 24V AC			•					built-in		
Wiper 230V AC			•					built-in		
Washer pump with tank, 24V AC			•					•		
Washer pump with tank, 230V AC			•					•		
Fan assisted heater 12V DC								•	•	•
Fan assisted heater 24V AC	•			•	•			•	•	•
Fan assisted heater 230V AC								•	•	•
Tamper switch								•	•	



Easy to install, sturdy and reliable, Videotec brackets meet different requirements, both for ceiling and wall installations. Epoxy powder painted, RAL9002 colour, with stainless steel screws, each bracket has been designed to be combined with various housings, so as to make its choice and handling easier.

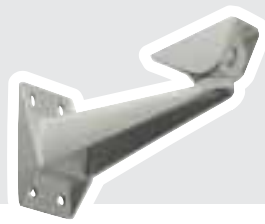
WBJ HOUSING WALL BRACKET

- > Die-cast aluminium
- > 25 Kg (55 lb) load rating
- > For large-medium housings
- > Joint adjustment and clamping by only one bolt



WBM HOUSING WALL BRACKET, WITH JOINT

- > Die-cast aluminium
- > 25 Kg (55 lb) load rating
- > Recommended for medium-small housing
- > Joint adjustment and clamping by only one bolt



WFWC COLUMN BRACKET WITH INTEGRATED JOINT

- > Made of aluminium
- > 15 Kg (33 lb) load rating
- > Column/parapet mounting of housings
- > Available extension through WFWBT



WBOV WALL BRACKET WITH INTERNAL CABLE CHANNEL AND STURDY JOINT

- > Die-cast aluminium
- > 25 Kg (55 lb) load rating
- > Joint adjustment and clamping by only one bolt



WBOV3 WALL BRACKET WITH INTERNAL CABLE CHANNEL AND STURDY JOINT

- > Die-cast aluminium
- > 25 Kg (55 lb) load rating
- > Joint adjustment and clamping by only one bolt
- > Support plate and weather-proof box. It allows carrying out the wiring in the weatherproof box



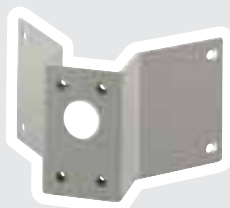
WCP REINFORCING SUPPORT PLATE FOR POOR CONSISTENCY WALLS

- > Die-cast aluminium
- > For WBJ, WBM, WBOV and PTAC mounts
- > Available with a supporting box with internal passage of cables



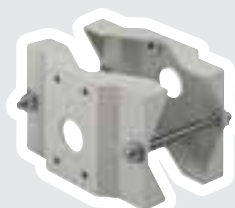
WCW CORNER ADAPTOR

- > Steel made
- > For WBJ, WBM, WBOV and PTAC mounts



WSFP POLE MOUNT

- > Die-cast aluminium
- > For WBJ, WBM, WBOV and PTAC mounts
- > Pole diameters Ø 65÷110 mm (2.5÷4.3 in)

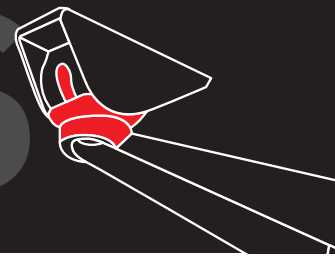


WCPA LINEAR EXTENSION FOR WCM4 AND WCM5

- > Made of aluminium tube
- > It allows a 500 mm (19 in) extension



BRACKETS FOR HOUSINGS AND CAMERAS



WCM3

HOUSING CEILING MOUNT WITH STURDY JOINT

- > Made of aluminium
- > 15 Kg (33 lb) load rating
- > Housing adjustment by only one bolt



WCM4

CEILING MOUNT WITH INTERNAL CABLE CHANNEL

- > Made of curved aluminium tube
- > 15 Kg (33 lb) load rating
- > WCMPA 500 mm (19 in) linear extension available



WCM5

HOUSING CEILING MOUNT WITH STURDY JOINT

- > Made of curved aluminium
- > 15 Kg (33 lb) load rating
- > Housing adjustment by only one bolt
- > WCMPA 500 mm (19 in) linear extension available

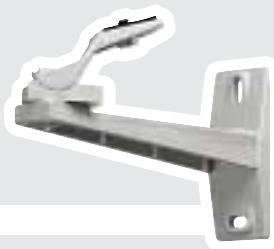


CAMERA BRACKETS

WBCA

WALL/CEILING MOUNT FOR CAMERAS

- > Die-cast aluminium
- > 5 Kg (11 lb) load rating
- > Adjustment and fixing by only one bolt
- > Recommended for small housings (HET models 100 and 160 mm)



WBCLA

WALL/CEILING MOUNT FOR CAMERAS

- > Resistant tecnopolymer material
- > 3 Kg (6.6 lb) load rating
- > Length: 170 mm (6.6in)
- > Adjustment and fixing by only one bolt



WBCV

SERIES OF WALL/CEILING CAMERA BRACKETS

- > Made of aluminium with base of nylon
- > Available lengths: 80, 140, 190 mm (3.1- 5.5 and 7.4 in)
- > 50 mm (1.9 in) optional extension (WBCP)
- > Adjustment and locking by a manual ring

WBCD

SERIES OF WALL/CEILING CAMERA BRACKETS

- > Made of aluminium with swivel and base of nylon
- > Available lengths: 50, 80, 140 mm version (1.9 - 3.1- 5.5 in)
- > 50 mm (1.9 in) optional extension WBCP
- > Joint adjustment by a single bolt



Constructed to ensure solidity and reliability, Videotec pan and tilt motors have been designed and tested for use in the severest working conditions. The pan and tilt motors for outdoor use ensure a high level of protection against attacks from external agents present in the atmosphere. At the same time, the mechanical precision construction and the use of highly reliable motors drastically reduce the need of periodical maintenance even in situations of heavy mechanical stress. The same care and attention to details have been paid in the construction of the P&T motors for indoor use. Videotec pan & tilt controls, easy to install and use, allow the control of P&T motors and motor-driven zoom lenses.



PTH355P

OUTDOOR VARIABLE SPEED PAN&TILT MOTOR

- > Loads up to 12 Kg (26 lb)
- > IP66
- > Made of die-cast aluminium and painted with epoxy polyester powder
- > Controlled by the DTRXDC telemetry receiver
- > Standard Preset
- > Standard Autopan
- > Internally adjustable horizontal and vertical limit switches
- > DC motors: (0-24V DC)
- > Horizontal speed from 0 to 30°/s, vertical from 0 to 18°/s



PTH300

OUTDOOR PAN & TILT MOTOR

- > Loads up to 12 Kg (26 lb)
- > IP66
- > Made of die-cast aluminium and painted with epoxy polyester powder
- > Standard autopan function with delayed inversion
- > Optional preset
- > Versions 24V AC and 230V AC, 50/60 Hz
- > Internally adjustable horizontal and vertical limit switches
- > Horizontal fixed speed 6°/s, vertical fixed speed 3°/s



PTH900

STURDY OUTDOOR PAN & TILT MOTOR

- > Loads up to a 30 Kg (66 lb)
- > IP66
- > Made of die-cast aluminium and painted with epoxy polyester powder
- > Standard autopan function with delayed inversion
- > Optional preset
- > Optional motors heaters for low temperature applications down to -40°C -40°F
- > Versions 24V AC and 230V AC, 50/60 Hz
- > Internally adjustable horizontal and vertical limit switches
- > Horizontal speed 6°/s, vertical speed 3°/s

PAN&TILT AND CONTROLS



IPT

WALL INDOOR PAN&TILT MOTOR

IPTS - IPHS

CEILING INDOOR PAN&TILT AND SCANNER MOTOR

- > For loads up to 5 Kg (11 lb)
- > Sturdy die-cast aluminium structure, protected by a nylon shell
- > Integrated Autopan function
- > 24V AC and 230V AC versions
- > Available 50 and 60Hz versions
- > Externally adjustable horizontal limit switches, vertical limit switches fixed at 90°
- > Horizontal fixed speed 6°/s, vertical fixed speed 3°/s



CBZ

DESKTOP CONTROLLER FOR PAN&TILT AND ZOOM LENS

- > Aluminium enclosure and polycarbonate membrane keyboard
- > Direct connection and feeding to the pan & tilt motor
- > Suitable for common ground or polarity inversion motor-driven zoom lenses, 6/12V DC
- > 24V AC and 230V AC, 50/60 Hz versions
- > Control of Autopan function



PTBC

WALL BRACKET FOR PTH900 PAN&TILT MOTORS

- > Die-cast aluminium
- > 50 Kg (110 lb) load rating



PTAC

WALL MOUNT FOR PTH300 SERIES AND LIGHT DUTY P&T MOTORS

- > Die-cast aluminium
- > 35 Kg load rating (77 lb)



WFWBT

COLUMN BRACKET FOR PTH900, PTH300 AND PTH355P PAN&TILT MOTORS

- > Made of aluminium
- > 50 Kg load rating (110 lb)



PTDC

CEILING BRACKET FOR PTH900, PTH300 AND PTH355P PAN&TILT MOTORS

- > Made of aluminium
- > 50 Kg (110 lb) load rating



PTCC

POLE MOUNT ADAPTOR FOR PTBC BRACKET

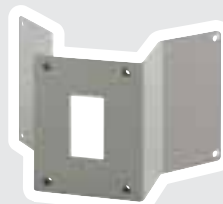
- > Thick die-cast aluminium
- > 50 Kg (110 lb) load rating
- > Pole diameters \varnothing 80÷150 mm (3.1÷5.9 in)



WCWGC

CORNER ADAPTOR FOR PTBC BRACKET

- > Made of steel with stainless steel clamping screws
- > 50 Kg (110 lb) load rating



PTPC

TOP OF POLE ADAPTOR PLATE FOR PTH900, PTH300 AND PTH355P MOTORS

- > Made of steel
- > Pole diameter \varnothing 80÷120 mm (3.1÷4.7 in)



BRACKETS FOR PAN&TILT



HOUSINGS/BRACKETS COMPATIBILITY

	WALL			CEILING			COLUMN	WALL OR CEILING
	WBJ	WBM	WBOV	WCM3	WCM4	WCM5	WFWC	WBCA
Length mm (in)	285 (11.2)	226 (8.8)	200 (7.8)	300 (11.8)	390 (15.3)	390 (15.3)	185 (7.2)	170 (6.6)

HOUSINGS

HEA		•		•		•	•	
HEB	•	•	•	•	•	•	•	
HEG	•					•	•	
HEK		•	•	•	•	•	•	
HEM		•		•		•	•	
HEP	•			•		•	•	
HET		•		•		•	•	• only 100 and 160 mm
HOV	•		•	•	•	•	•	
VERSO	•		•	•	•	•	•	
VERSO COMPACT	•	•	•	•	•	•	•	

P&T/BRACKETS COMPATIBILITY

	WALL		CEILING	COLUMN	TOP POLE
	PTAC	PTBC	PTDC	WFWBT	PTPC
Length mm (in)	360 (14.1)	445 (17.5)	325 (12.7)	185 (7.2)	

P&T'S

PTH300	•	•	•	•	•
PTH355P	•	•	•	•	•
PTH900		•	•	•	•

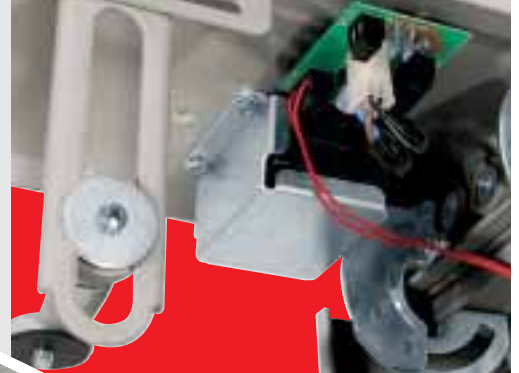


Particular attention has been paid during the design and construction of these products in as much as their characteristics are for use in particular situations. The vandal resistant housings have been produced in painted steel using epoxy polyester powder. The care taken during production of the housings ensures maximum solidity and reliability.

AVTPSKB

VANDAL RESISTANT CEILING HOUSING, FOR INDOOR INSTALLATION

- > Made of steel 2,5 mm (0,1 in) thick
- > Vandal resistant glass 4 mm (0.15 in) in polycarbonate
- > Compass opening by means of a lock (Two versions available: different or same lock/same key)
- > Without external screws
- > Possibility of external connections by means of 3 M20 glands or directly from the ceiling
- > Accessories available: thermostated heater, camera power supply and alarm tamper switch



AVTPSA

VANDAL RESISTANT CORNER HOUSING, FOR INDOOR INSTALLATION

- > Made of steel 3 mm (0.1 in) thick
- > Vandal resistant glass 4 mm (0.15 in) in polycarbonate
- > Compass opening by means of a lock
- > Internal dimensions: 75x65x 200 mm (2.9x2.5x7.8 in) BxHxL
- > Without external screws



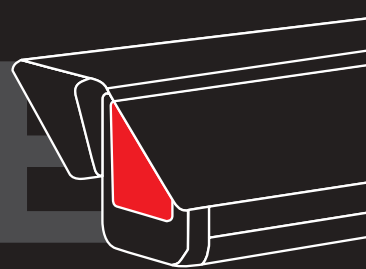
AVTPSAM

SMALL VANDAL RESISTANT CORNER HOUSING, FOR INDOOR INSTALLATION

- > Made of steel 3 mm thick (0.1 in) thick
- > Vandal resistant glass 4 mm (0.15 in) in polycarbonate
- > Compass opening by means of a tamperproof screw
- > Internal dimensions: 45x45x100 mm (1.7x1.7x3.9 in) BxHxL



VANDAL RESISTANT HOUSINGS



AVTPSC

COMPACT VANDAL RESISTANT CEILING HOUSING, FOR INDOOR INSTALLATION

- > Made of steel 1,5 mm (0.6 in) thick
- > PMMA glass 4 mm (0.15 in)
- > Compass opening by means of a lock (same lock/same key all housings)
- > Without external screws
- > Possibility of external connections by means of 2 M20 cable glands or directly from the ceiling
- > Accessories available: thermostated heater, camera power supply



AVBPH

ARMoured LARGE WEATHERPROOF HOUSING

- > Produced in extremely thick aluminium extrusion, with front and rear bottom made of 30 mm (1.1 in) die-cast aluminium
- > 3 mm (0.1 in) steel armour side plating
- > 18 mm (0.7 in) vandal-proof glass on vandal resistant metallic structure
- > Internal dimensions: 122x100x380 mm (4.8x3.9x14.9 in) BxHxL
- > IP54
- > Standard accessories sunshield and heater; optional blower and camera power supply

AVBPWBB

STURDY WALL BRACKET, WITH INTERNAL CABLE CHANNEL, DESIGNED FOR AVBPH HOUSING

- > Made of heavy gauge aluminium
- > Support plate enabling the cables to arrive directly into the external vandal resistant junction box (mod. AVBPWB01B)





The stainless steel special housings and P&T's have been designed to protect the cameras from particularly aggressive environmental conditions. They are entirely made of AISI 304 or AISI 316 stainless steel. In consideration of the extremely severe specifications, each detail has been carefully analysed, obtaining in this way very reliable products, suitable for industrial uses.



NXW

SPECIAL LIQUID-COOLED HOUSING

- > Made of AISI 316 stainless steel
- > Steel cylindrical chamber for internal circulation of cooling liquid linked to an external circuit
- > Internal dimensions: 78x78x327 mm (3x3x12.8 in) BxHxL
- > Weatherproof standard IP67
- > Sealing O-ring gaskets
- > Two PG13,5 cable glands nickel-plated brass for external connections
- > Standard air barrier
- > Application example: environmental temperature 400°C (752°F), 6l/min (1.6gal/min) incoming water at 20°C (68°F) temp., internal housing temperature 45°C (113°F)
- > Available accessories: camera power supply, filter group, toughened glass max temp. 290°C (554°F), VICOR glass max 1200°C (2192°F) or IR proof glass max temp. 290°C (554°F)



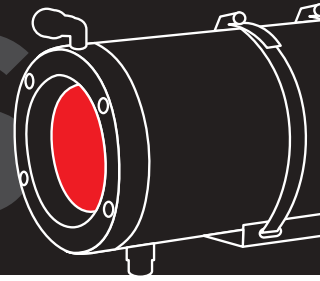
NXM

SPECIAL WATERPROOF HOUSING

- > Entirely made of AISI 316 stainless steel
- > Cylindrical body is enclosed by two 12 mm-thick (0.47 in) circular flanges
- > Internal dimensions: 88x86x343 mm (3.4x3.4x13.5 in) BxHxL
- > Sealing O-ring gaskets
- > Two PG13,5 cable glands nickel-plated brass for external connections
- > IP68, submersible up to -50m. (-130ft), equal to 5 BAR max pressure
- > Accessories available: sunshield, heater kit and double power heater (for temperature down to -40°C -40°F), camera power supply, air barrier + filtering group, wiper and washer



STAINLESS STEEL HOUSINGS AND P&T



NXL

LARGE HOUSING FOR BIG LENSES

- > Entirely made of AISI 316 stainless steel
- > Cylindrical body is enclosed by two 12 mm-thick (0.47 in) circular flanges
- > Internal dimensions: 116x116x562 mm (4.6x4.6x22 in) BxHxL
- > Sealing O-ring gaskets
- > Four PG13,5 cable glands nickel-plated brass for external connections
- > IP67
- > Accessories available: sunshield, heater kit, camera power supply, wiper and washer



NXJ

LARGE WEATHERPROOF HOUSING

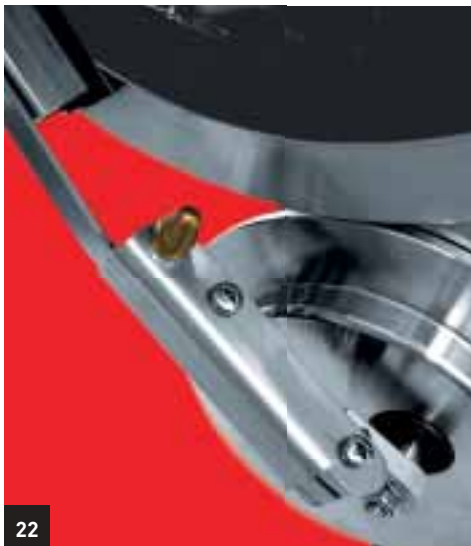
- > Entirely made of AISI 304 sheet steel
- > Painted with epoxy polyester powder
- > Standard IP54
- > Internal dimensions: 177x126x490 mm (6.9x4.9x19.3 in) BxHxL
- > Hinged opening system
- > 2 cable glands for external connections
- > Available accessories: standard sunshield and thermostat heater; optional blower, camera power supply, wiper and washer



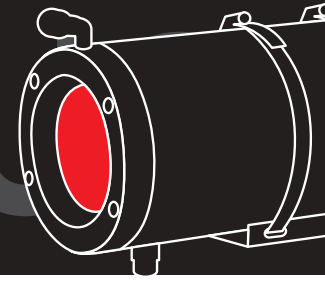


NXPTH HEAVY DUTY PAN&TILT

- > AISI 316 stainless steel
- > IP67
- > Up to 40 Kgs balanced (88 lb)
- > Standard potentiometers for preset
- > 24V AC or 230V AC, 50/60 Hz versions
- > Horizontal fixed speed 5°/s, vertical fixed speed 3°/s
- > Suitable for NXM and NXL housings

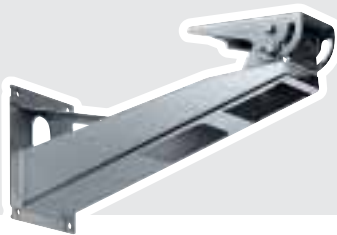


STAINLESS STEEL HOUSINGS AND P&T



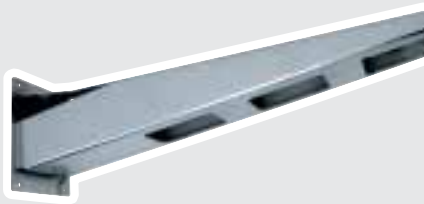
NXWBS WALL BRACKET

- > AISI 316 stainless steel
- > 45 Kg (99 lb) load rating
- > Recommended housings: NXJ, NXM, NXW
- > Available modular components: NXCOL and NXCW



NXWBPT WALL SPECIAL BRACKET FOR NXPTH

- > AISI 316 stainless steel
- > 70 Kg (154 lb) load rating
- > Compatible with NXCOL and NXCW and NXFWBT modular components



NXWBL WALL BRACKET FOR NXL HOUSING

- > AISI 316 stainless steel
- > 70 Kg (154 lb) load rating
- > Available modular components: NXCOL and NXCW



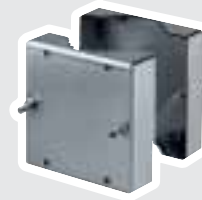
NXFWBT STAINLESS STEEL PARAPET MOUNT FOR NXPTH P&T'S

- > Made of AISI 316 stainless steel
- > 70 Kg (154 lb) load rating
- > Compatible with: NXWBPT bracket



NXCOL POLE MOUNT ADAPTOR

- > AISI 316 sheet steel
- > Ø 110÷150 mm pole (4.3÷5.9 in)



NXCW CORNER MOUNT ADAPTOR

- > AISI 316 sheet steel



ONXAB AIR BARRIER

- > Made of AISI 316 stainless steel
- > Recommended max air pressure: 2.5 BAR
- > Optional on NXM and standard on NXW housings



NXFIGRU AIR FILTERING GROUP

- > To be combined with ONXAB air barrier to clean the air from oil and water particles, generally coming from the compressor
- > Filtering of particles with diameter higher than 0.2 micron
- > Operating pressure 0.3÷2.5 BAR



VIPNX WIPER FOR HOUSING

- > Made of AISI 316 stainless steel
- > IP66 enclosure
- > Different voltage available, 230V AC or 24V AC, both 50/60Hz
- > Connector 3+1 poles for easy wiring harness
- > Easy installation and upgrade on NXM, NXL and NXJ housing





The explosion proof equipment has been designed to meet rigorous requirements and installations in hazardous areas, where flammable gases may be present. All the EEX series has been certified to meet the ATEX and IECEx standards. The housing can accommodate most camera and lens combinations, while the P&T, thanks to the single multi-core pre-wired cable simplifies installation and maintenance. Videotec's wide range of solutions are being utilised in explosive and hazardous atmospheres throughout the world.



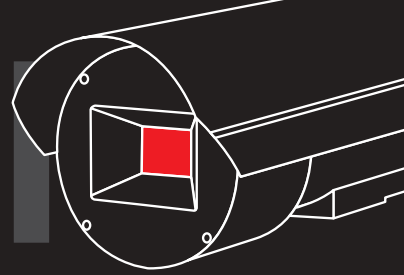
EXDTRX3

TELEMETRY RECEIVER/DRIVER FOR HAZARDOUS ENVIRONMENTS

- > 230V AC or 24V AC power supply
- > 17 functions with included preset, glass protection device and alarm feature.
- > IP55 enclosure
- > 4 cable glands
- > Control of EXPTC and EXPTD
- > Maintenance of configuration even in case of power loss
- > Up to 14 presets
- > 4 alarm inputs, (prepositioning or patrol in case of alarm)
- > Preset Autotest functions
- > RS232, Current Loop, RS485 or over the Coax (with optional card DTCOAX) selectable communication
- > Integrated protocol Pelco "D"
- > ATEX II 2 GD EExd IIC T6 T85°C IP66 certified



EXPLOSION-PROOF SYSTEMS



EXPTD

PAN&TILT WITH INTEGRATED CAMERA HOUSING EQUIPPED WITH GLASS PROTECTION DEVICE

- > Housing with the same specifications as the EXHD
- > Device for the protection of the glass installed on the front of the housing
- > Protection level: IP65
- > Absence of external wiring rotating both for the control of the P&T, for the camera and the lens and glass protection device
- > Single multi-core cable ready wired up, included with the unit, comes out of the base of the P&T through a cable gland
- > Horizontal range 360°, for fixed speed: 6°/s, vertical range - 90° / + 90° for fixed speed: 2.4°/s
- > Equipped as standard with housing heater and preset. Available options: housing sunshield, autopan and replacement film
- > Available version with reinforced (triple) housing and (double) P&T heater and special painting for low temperature application down to -40°C -40°F (mod. EXPTD035R)
- > IECEx Ex d IIC T6 DIP A21 TA 85°C IP 65, ATEX II 2 GD EExd IIC T6 T85°C IP65, certified

EXPTC

PAN&TILT WITH INTEGRATED CAMERA HOUSING FOR OPERATING IN AN POTENTIALLY EXPLOSIVE ATMOSPHERE

- > Housing with the same specifications as the EXHC
- > Protection level: IP65
- > Absence of external wiring rotating both for the control of the P&T and for the camera and focusing
- > Single multi-core cable ready wired up, included with the unit, comes out from the base of the P&T through a cable gland
- > Horizontal range 360°, for fixed speed: 6°/s, vertical range - 90° / + 90° for fixed speed: 2.4°/s
- > Equipped as standard with housing heater and preset
- > Available options: housing sunshield, autopan
- > Available version with reinforced (triple) heater and (double) P&T heater and special painting for low temperature application down to -40°C -40°F (mod. EXPTC033R)
- > IECEx Ex d IIC T6 DIP A21 TA 85°C IP 65, ATEX II 2 GD EExd IIC T6 T85°C IP65, certified



EXPTC033R



EXPTWB

BRACKET FOR EXPT EXPLOSIONPROOF PAN&TILT

- > Constructed in solid, anticorodal aluminium alloy
- > Colour: RAL7032
- > Maximum capacity, non-static: 100 Kg (220 lb)



EXHC

EXPLOSION-PROOF HOUSING

- > Constructed in solid, anticorrosive aluminium alloy, 10 mm (0.4 in) thick and sealed at opposite sides by two flanges 12 mm (0.47 in) thick
- > Powder painted RAL7032
- > Protection level: IP65
- > Diameter Ø 210 mm (8.2 in) length 400 mm (15.7 in)
- > Useful internal area: Ø 180x380 mm (Ø 7x14.9 in)
- > 2 cable glands 3/4" GAS allow the wiring with the exterior
- > Standard equipped with heater, optionally with sunshield
- > Available version with reinforced (triple) heater and special painting for low temperature application down to -40°C -40°F (mod. EXHC003R)
- > IECEx Ex d IIC T6 DIP A21 TA 85°C IP 65, ATEX II 2 GD EExd IIC T6 T85°C IP65, certified



EXHD

EXPLOSION-PROOF HOUSING WITH GLASS PROTECTION DEVICE

- > Same features of EXHC but equipped device for the protection of the glass installed on the front of the housing
- > Protection level: IP65
- > Internal area: Ø 180x460 mm (Ø 7x18 in)
- > The DC electric motor allows the winding of a Mylar film
- > 350 steps of the film
- > Marks on the last 50 cm (19 in) of the film (last 10 steps)
- > Accessories available: standard heater; optional sunshield and replacement film
- > Available version with reinforced (triple) heater and special painting for low temperature application down to -40°C -40°F (mod. EXHD005R)
- > IECEx Ex d IIC T6 DIP A21 TA 85°C IP 65, ATEX II 2 GD EExd IIC T6 T85°C IP65, certified



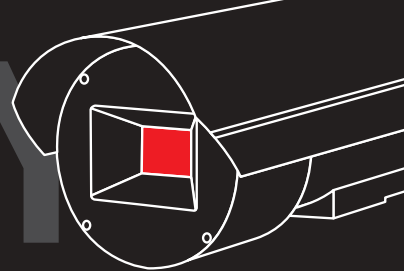
EXHC003R + EXWB00R

EXBJ - EXWB

BRACKET AND SWIVEL FOR EXH EXPLOSION-PROOF HOUSING

- > Manufactured in anticorrosive aluminium alloy
- > Colour: RAL7032
- > Maximum capacity, non-static: 35 Kg (77 lb)
- > Only swivel allows the application in different installation

EXPLOSION-PROOF SYSTEMS



**BETTER
SAFE
THAN
SORRY**





ULISSE the new positioning unit for dynamic outdoor surveillance. More than a PTZ, more than a Speed Dome, this advanced Videotec product integrates a high performances P&T head with a camera housing and a telemetry receiver.



ULISSE POSITIONING UNIT

- > Made of aluminium and polycarbonate
- > IP66
- > Two choices of housings: standard and large
- > Top mount (OTT) with a high horizontal/vertical static/dynamic torque (20Nm)
- > Optional incremental encoder for real time positioning feedback
- > Easy installation and replacement on-site thanks to optional set-up data-set in flash memory and accurate mechanical construction
- > Max load rating: 20 Kg
- > Horizontal Continuous rotation
- > Variable speed: 0,1-100°/s Pan; 0,1-40°/s Tilt
- > Electronic limit switch
- > Autopan, Preset, Patrol and Pattern
- > Up to 250 Presets
- > Area and preset titling (max 20 characters string)
- > 4 alarm inputs with 2 relays output
- > OSM or enhanced PC configuration
- > RS232 interface for PC set-up and firmware upgrade
- > RS485, RS422, and over coax control
- > Addressable through dip-switch up 999 units for daisy chain configuration (RS485)
- > Multiprotocol
- > Possibility to integrate two big IR illuminators
- > Integrated or external wiper option



INTEGRATED POSITIONING SYSTEMS



ULISSE

INTEGRATED POSITIONING UNIT WITH MODULE CAMERA

- > Telemetry receiver, high performances P&T, camera housing and Sony block camera all-in-one
- > 26x Zoom Lens - High Telephoto Zoom and Wide Horizontal Field of View Capability
- > EXView HAD CCD for high sensitivity in low light environments
- > Dynamic Video Masking for privacy purposes



ACCESSORIES

UPTWBA

WALL BRACKET FOR ULISSE

- > Made by die-cast aluminium
- > Painted with epoxy polyester powder, RAL9002
- > Designed to take internal cables



UPTWBTA

PARAPET BRACKET FOR ULISSE

- > Made by die-cast aluminium
- > Painted with epoxy polyester powder, RAL9002
- > Designed to take internal cables





MISTRAL integrates a robust variable speed pan-tilt mechanism with a high performance DSP colour camera. Its small elegant form makes it the ideal camera for indoor surveillance applications. MISTRAL fits unobtrusively within any decor and provides crisp full-colour images. MISTRAL is factory prefocused to give sharp images of objects 1.5 m to infinite from the camera. MISTRAL is ready to connect to both traditional coaxial based wiring systems utilising RS485 telemetry protocol or connect them directly with CAT-5 structured cabling systems. MISTRAL is the cost effective choice for those applications where cameras are required to be occasionally realigned to oversee temporary displays or moveable exhibits in galleries, hotel and office foyers, showrooms and department stores.

MISTRAL

SPEED DOME CAMERA WITH SMALL DIAMETER

- > Attractive, surface-mount design
(diameter: 12cm, 4.7in; high: 8.5cm, 3.3in)
- > Wide dynamic range camera with AGC, auto-tracing white balance (AWB) and automatic back-light compensation
- > Choice of 8 mm or 6 mm lens
- > Robust variable speed pan-tilt mechanism with 0 to 180° pan and +10 to -90° tilt movement 0.5 to 40°/sec. manual pan & tilt control
- > 200°/sec. (max) preset acquisition
- > 32 programmable presets with 0.1° targeting accuracy
- > Auto recovery following power failure without loss of presets
- > Control by DCT and DCJ (DCTEL and DCIR no variable speed) keyboards with RS485 telemetry
- > RS422 telemetry control and integrated Pelco "D" and Vicon protocols
- > Inbuilt active twisted pair transmitter for direct compatibility with CAT-5 structured cabling systems utilising UTP video transmission
- > Low power consumption, high design MTBF
- > Snap-fix mounting system and safety lanyard
- > Accessories: standard snap-fixing mounting plate and pigtail break-out cable, optional clear bubble



ACCESSORIES



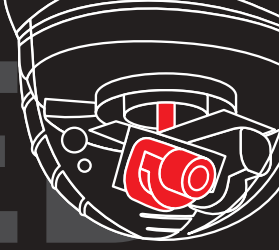
SNAP-FIX MOUNTING PLATE



PIGTAIL BREAK-OUT CABLE



INTEGRATED POSITIONING SYSTEMS



**D Y N A M I C
S U R V E I L L A N C E**

Videotec discreet surveillance domes allow the video monitoring by masking the camera from prying eyes, with only one diaphragm being lost. These housings are particularly suitable for airports, supermarkets, shopping centres. A wide range of accessories for mounting the equipment is available thereby satisfying all installation needs.



DBH24K

SPHERICAL HOUSING WITH SMALL DIAMETER

- > Constructed in plastic with the lower semi-sphere in plexyglass
- > Protection level: IP65
- > Mounting of standard cameras or most of the high speed domes available on the market and PTZ network cameras (check the available adaptors in the related chart)
- > Wall, ceiling or parapet application with cable management brackets
- > Accessories: standard white sunshield and selectable lower glass, transparent or smoked
- > Optional accessories: fan assisted thermostat heater, camera power supply



DBH45

FULL SPHERE DOME

- > Black anodised aluminium base
- > Diameter Ø 450 mm (17.7 in)
- > Adjustable camera mounting bracket
- > Suitable to mount IPTS, IPHS indoor pan & tilt motors
- > Wall or ceiling application with cable management brackets
- > Accessories available: fan assisted heater kit, camera power supply



DISCREET SURVEILLANCE DOMES



DSBH24

CEILING HALF-SPHERE DOME

- > Black aluminium base and plexiglass
- > Diameter Ø 240 mm (9.4 in)
- > Directly fixed to the ceiling or false ceilings
- > Adjustable camera mounting bracket



DSBH45

CEILING HALF-SPHERE DOME

- > Black anodised aluminium base and plexiglass
- > Diameter Ø 450 mm (17.7 in)
- > Directly fixed to the ceiling or false ceilings
- > Adjustable camera mounting bracket
- > Possibility to mount IPTS, IPHS indoor pan & tilt motors



DSBH120

HALF-SPHERE DOME FOR DISCREET SURVEILLANCE

- > Diameter Ø 120 mm (4.7 in)
- > For dropped (false) ceiling installations
- > Available in transparent or smoked glass



DBH05

PARAPET BRACKET FOR DBH24 DOME

- > Made by aluminium tube
- > Installation on parapet
- > Designed to take internal cables



DBH04

WALL BRACKET FOR DBH24 DOME

- > Made by metallic tube
- > Painted with black epoxy-polyester powder paint
- > Designed to take internal cables



DBH03

CEILING BRACKET FOR DBH45 AND DBH24 DOMES

- > Made by metallic tube
- > Painted with black epoxy-polyester powder
- > 915 mm (36 in) in length



DBH01

WALL BRACKET FOR DBH45 DOME

- > Made by metallic tube
- > Painted with black epoxy-polyester powder



DPTCH

POLE MOUNT ADAPTOR

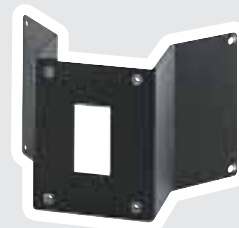
- > Made of aluminium
- > Pole diameters \varnothing 80÷150 mm (3.1÷5.9 in)
- > Suitable for DBH01 and DBH04

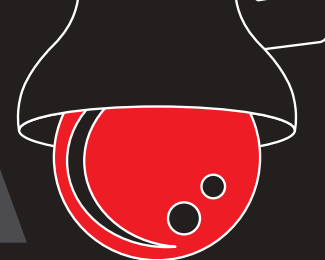


DCWGH

CORNER MOUNT ADAPTOR

- > Made of aluminium
- > Suitable for DBH01 and DBH04

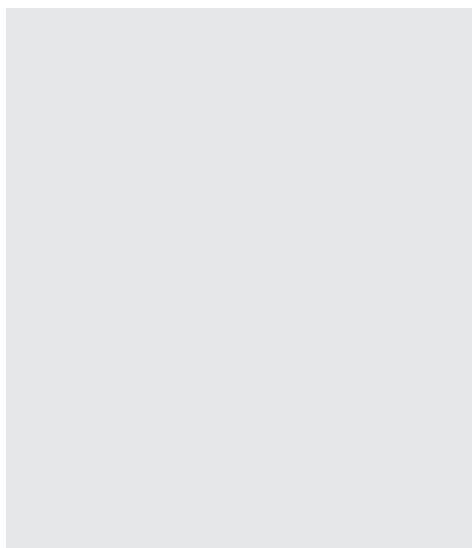




AVAILABLE ACCESSORIES FOR DBH24 *

	Fan-assisted heater 230V AC, 20W	Fan-assisted heater 24V AC, 20W	Fan-assisted heater 12V DC, 20W	Power supply for fixed camera 230V AC/12V DC 400mA	Power supply for fixed camera 230/24V AC, 400mA	Fan-assisted heater 230V AC + power supply for speed dome
INTERNAL ADAPTERS						
For FIXED CAMERA	•	•	•	•	•	
For PANASONIC VW-CS570, VW-CS320, VW-CS850, NS320	•	•				
For JVC TK-C676, VN-C655		•				•
For SAMSUNG TECHWIN SPD-1600P	•	•				
For SAMSUNG ELECTRONICS SCC-641P	•	•				
For SENSORMATIC DELTA DOME II, AMERICAN DYNAMICS ULTRA V, ULTRA VI		•				
For JVC V NET VN-C30U	•	•				
For SANYO VCC-9300P, VCC-9400P, GANZ ZC-S122P, ZC-S123P	•	•				
For SONY SNC-RZ30P, EVI-D70P/W	•	•				
For AXIS 2130R, AXIS 213, CANON VB-C50iR	•	•				
For SONY SNC-RZ25P		•				
For PANASONIC VWCS-950, AXIS 231, 232	•	•				
For PANASONIC BB-HCM381	•					
For AXIS 214	•	•				

* Further info at www.videotec.com





The electronic range comprises a complete series of products for the management of a wide range of CCTV systems. From simple sequential switchers to quad compressors, from small matrix devices directly or remote controlled through keyboard, from multiplexer to matrix units ideal for mid-size installation, the range is complete and versatile.

SW41SK - SW81SK

COST EFFECTIVE, DESKTOP SEQUENTIAL SWITCHER

- > 4/8 inputs, 1 output
- > Inputs selection to display performed manually or automatically
- > Active input signalled by LED
- > Skip function allows the exclusion of the non-connected inputs from the sequence
- > Automatic scanning time adjustable from 0.5 to 30 sec.
- > Power supply 230V AC, 5 W



SQ4C

COLOUR VIDEO QUAD COMPRESSOR

- > 4 video inputs
- > 4 video outputs (loop)
- > 1 monitor output
- > VCR input and output
- > 4 cameras simultaneously or an individual one onto full screen live or recorded
- > 4 alarms (NC or NO) and 1 relay
- > Selectable PAL/NTSC
- > Images updated in real time 25 fields/sec (PAL), 30 fields/sec (NTSC)
- > High resolution: 720x576 PAL, 720x480 NTSC
- > Cycling on quad and on full screen camera
- > Programming through a screen menu
- > Warning of the absence of video signal and display of the alarm on screen
- > VCR playback function
- > Display of the recording on quad format with zoom to full screen for each quad
- > RS232 serial connection, baud rate 9600
- > Standard rack adapter 19"

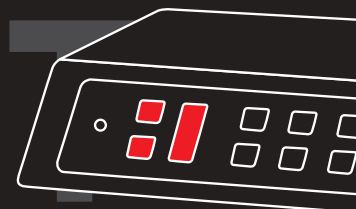


SP16C

COLOUR VIDEO TRIPLEX MULTIPLEXER

- > Triplex operations
- > VCR- input/outputs and S-VHS output
- > Real time configurable multi screen display, up to 16 cameras display
- > Images updated in real time
- > Serial RS485 direct remote control by DCK, DCJ and DCT keyboards (max dist. 1200 m) or through SM series matrix
- > Video motion detection for each camera
- > 16 composite video camera inputs with loop
- > Selectable PAL/NTSC
- > High resolution: 720x576 (PAL/CCIR), 720x480 (NTSC/EIA)
- > Programming on screen menu
- > Addressable for multiple connection
- > Digital zoom: 2x
- > 16 Alarm inputs and 1 relay output
- > Event list
- > Alarm and/or videoloss buzzer
- > Standard rack adapter 19"

VIDEO SWITCHING



SM328A

FULL CROSSPOINT VIDEO MATRIX

- > 32 video inputs (composite PAL/NTSC 1Vpp) with video loss
- > 32 video outputs (composite PAL/NTSC 1Vpp) with video loss detection
- > 8 video outputs (composite PAL/NTSC 1Vpp) with OSD character (free text, date and time)
- > Privacy video masking function
- > On Screen Menu configuration and PC enhanced configuration software tool (WIN 95/98/2000/XP/NT)
- > 32 alarm inputs, 8 relay outputs, 1 buzzer
- > Day/night sequences (32-step each) for each monitor
- > Time and date, daylight saving time (automatic for Europe/America/ etc. and user defined), holidays, closing periods
- > 4 RS485 keyboard inputs RJ11 connectors (max 8 keyboards)
- > 2 Aux RS485 lines output to control Videotec telemetry and multiplexer and other third parties (check the compatible products in the related chart)
- > Aux A can be used to connect more SM328A matrixes in Master/Slaves or Parallel systems
- > Master/Slave systems: 1 Master matrix receives 4 outputs from every Slave (max 4). Master keyboards can control all system cameras; Slave keyboards only local cameras
- > Parallel systems: up to 9 matrixes can be connected together. Each user must be given a monitor from each matrix he can control.
- > 1 PC RS232 DB9 serial connector to control and reprogram matrix (firmware upgrade capability)
- > VCR Trigger input to connect a time laps VCR
- > On alarm: actions on monitors (sequences and cameras) and on telemetry (scan on home positions or patrol)
- > Camera exclusion feature if the monitor is used in public places
- > Time events
- > Rack standard 2HE



SM42A - SM82A

SMALL VIDEO MATRIX

- > 4 video inputs expandable up to 8 by additional board
- > 2 independent video outputs
- > Text generator on both video outputs
- > 4 (8) alarm inputs, one output contact, trigger VCR and alarm reset
- > 15 keys local keypad
- > Two RS485 serial inputs for max 2 remote keyboards
- > Telemetry over the coax on the 4 (8) video inputs and on auxiliary serial output (RS485)
- > Alarm buzzer
- > Privacy video-masking function
- > Camera exclusion feature if the monitor is used in public places
- > Alarm relè
- > Pelco "D" protocol support
- > On Screen Menu for parameters setup



SM84A - SM164A

VIDEO MATRIX

- > 8 video inputs expandable up to 16 by additional board
- > 4 independent video outputs
- > Text generator on all video outputs
- > 8 (16) alarm inputs, one output contact, trigger VCR and alarm reset
- > Date and time
- > Four RS485 serial inputs for max 4 remote keyboards
- > Telemetry over the coax on the 8 (16) video inputs and on auxiliary serial output (RS485)
- > Alarm buzzer
- > Privacy video-masking function
- > Camera exclusion feature if the monitor is used in public places.
- > Alarm relè
- > Controllable by PC (RS232)
- > Pelco "D" Protocol support
- > On Screen Menu for parameters setup
- > Standard rack adapter 1HE



The range of control keyboards is designed to offer the best solution for small to large systems. Built in shock and thermo resistant materials, with rubber keys, the range offers the right keyboard for the right application. The range allows the possibility to control a wide range of switching devices and the most common high speed domes, in an ergonomic and pleasant design. Distance between devices up to 1200 m (3900 ft) and serial communications in RS485.

DCBD

MATRIX CONTROL KEYBOARD

- > Suitable for SM42A-82A, SM84A-16A matrix
- > Control of video switching, sequences and alarm reset
- > Normally fed by SM42A-82A, SM84A-16A matrix
- > RS485 serial communication



DCTEL

MATRIX AND TELEMETRY CONTROL KEYBOARD

- > Suitable for SM42A-82A, SM84A-16A matrix and telemetry receivers
- > Control of video switching, sequences and alarm reset
- > Normally fed by SM42A-82A / SM84A-16A matrix
- > Two output for RS485 serial communication (1 for matrix control, 1 for telemetry independent control)
- > Telemetry control through matrix or directly by RS485 dedicated serial output: P&T, autopan, preset, zoom, focus, iris and AUX
- > MISTRAL compact speed dome control (no variable speed)
- > Pelco "D" and Eneo Protocols support



DCIR

INFRARED REMOTE CONTROL WITH BASE

- > Infrared receiver situated in the base of the remote control
- > No cable on the table
- > Suitable for SM42A-82A / SM84A-16A matrix and telemetry receivers
- > Control of video switching, sequences and alarm reset
- > Normally fed by SM42A-82A / SM84A-16A matrix
- > RS485 serial communication
- > Telemetry control through matrix and directly by the RS485 serial output: P&T, autopan, preset, patrol, zoom, focus, iris and AUX
- > MISTRAL compact speed dome control (no variable speed)

CONTROL KEYBOARDS



DCK

VIDEO CONTROL KEYBOARD

- > Control of matrix SM42A-82A, SM84A-164A, matrix SM328A and multiplexer SP16C
- > Communications:
 - RS485 serial communication towards video matrix and multiplexer
 - RS232 serial communication towards PC for firmware update
- > Direct control or through matrix series SM of Videotec and third parties products (check the compatible products in the related chart)
- > Up to 9999 video channels, 99 monitors
- > Configurable alarm or communication fault buzzer
- > 4 lines backlit display
- > 4 languages menu

DCJ

VIDEO AND TELEMETRY CONTROL KEYBOARD

- > Control of matrix SM42A-82A, SM84A-164A, matrix SM328A and multiplexer SP16C
- > Three axis proportional joystick
- > Communications:
 - Three RS485 serial communications lines: one toward video matrix and multiplexer and the other two to control two independent telemetry channels
 - RS232 serial communication towards PC for firmware update
- > Direct control or through matrix series SM, Videotec SP16 and third parties products (check the compatible products in the related chart)
- > Up to 9999 video channels, 999 telemetry receivers on each telemetry line and 99 monitors
- > Configurable alarm or communication fault buzzer
- > 4 lines backlit display
- > 4 languages menu



VIDEO SWITCHING MANAGEMENT

	SP16C	SM328A	SM164A	SM84A	SM82A	SM42A
Max video inputs	16	32	16	8	8	4
Max video outputs	3 (2 monitors + 1 VCR)	8	4	4	2	2
Max operators	1 (+ 1 remote)	8	4	4	2 (+ 1 locally)	2 (+ 1 locally)
Max alarms	16	32	16	8	8	4
Telemetry		RS485	RS485 / Coax	RS485 / Coax	RS485 / Coax	RS485 / Coax

KEYBOARDS

DCBD			•	•	•	•
DCTEL / DCIR			•	•	•	•
DCK	•	•	•	•	•	•
DCJ / DCT	•	•	•	•	•	•



DCT

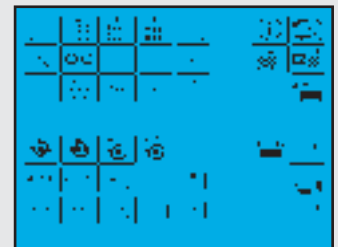
TOUCH SCREEN VIDEO AND TELEMETRY CONTROL KEYBOARD

- > Graphic Display: 320x240 pixels, touch screen back-lit
- > Control of all Videotec matrixes and multiplexers
- > Three axis joystick
- > Communications:
 - RS485 serial communication towards video matrix and multiplexer
 - Two RS485 independent telemetry lines
 - RS232 serial communication towards PC for software configuration upload and firmware update
- > Virtual keyboard touchscreen
- > Possibility to customize startup page and Service page
- > Possibility to customize up to 30 maps and customize 40 virtual keys (macrocommand) to any map
- > 6 languages menu with expansion possibility up to 12 (management by the programmer)
- > Up to 9999 video channels, 999 telemetry receivers on each telemetry line and 99 monitors
- > Configurable alarm or communication fault buzzer
- > Direct control or through matrix series SM of Videotec and third parties products (check the compatible products in the related chart)

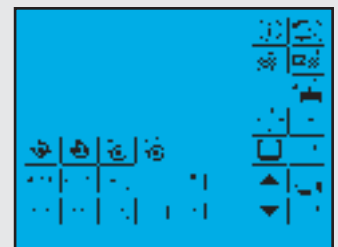
Free device:

- The keyboard allows the control of multiplexers, DVR, PC or other devices through the implementation of the proprietor Macro Protocol. The graphic user interface and the control keys can be freely associated by the user/installer. The total number of commands is 128; in the main layout up to 30 command keys can be freely handled.

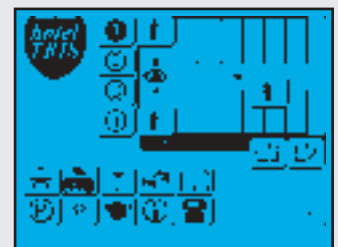
EXAMPLE OF SCREEN LAYOUT FOR MULTIPLEXER/DVR AND TELEMETRY CONTROL



EXAMPLE OF SCREEN LAYOUT FOR MATRIX AND TELEMETRY CONTROL



EXAMPLE OF SCREEN LAYOUT OF GRAPHICAL USER MAP



CONTROL KEYBOARDS



COMPATIBLE PROTOCOLS (FURTHER INFO AT WWW.VIDEOTEC.COM)

PRODUCTS	PROTOCOLS	KEYBOARDS			MATRIX *
		DCT	DCJ	DCK	SM/A
Multiplexer	Ademco / Honeywell	•	•	•	
Multiplexer	Hitron	•	•	•	•
Multiplexer	Sanyo	•	•	•	
Multiplexer	Sony	•	•	•	
DVR	Ademco / Honeywell	•			
DVR	Eneo				
DVR	Samsung Electronics	•			
DVR	Sanyo	•			
DVR	Sony	•	•	•	
Speed Dome	Bosch		HW INTFC**		
Speed Dome	Elbex	•	•		
Speed Dome	Ernitec	•	•		
Speed Dome	Hitron	•	•		•
Speed Dome	Honeywell / VCL	•	•		
Speed Dome	JVC	•	•		
Speed Dome	Kalatel		•		
Speed Dome	Mark&Mercer	•			
Speed Dome	Panasonic	•	•		
Speed Dome	Pelco	•	•		•
Speed Dome	Samsung Electronics	•	•		
Speed Dome	Santec	•	•		•
Speed Dome	Sanyo	•			
Speed Dome	Sensormatic	•	•		
Telemetry Receiver	Eneo	•	•		•

* Meaning control by DCT/DCJ/DCK keyboards through serial port RS485 of matrix SM series. Because DCK, DCJ and DCT may be interfaced with equipment not manufactured by Videotec, the possibility exists that the interface protocols have changed or are in a different configuration from earlier tested units from us. Videotec recommends a bench test prior to installation. Videotec will not be liable for any installation costs or lost revenues in the event a compatibility problem will occur.

** HW INTFC Hardware Interface Needed: RS485/RS232 adapter+ RS232/BIPHASE converter (Bosch mod.LTC8786).



The telemetry receivers range includes products with minimum features up to the most complete which satisfy any installation requirement. The digital receivers allow the control of P&T and motorized zoom lenses up to 1200 m (3900 ft) distance, by a twisted pair cable. In case of using the DTRX3 receiver with the DTCOAX optional card and DTMRX2, a coax cable, which is used for the video signal, can be used for data transmission together with Videotec matrix.



DTMRX2

TELEMETRY RECEIVER, FOR REMOTE CONTROL OF PAN&TILT MOTORS AND ZOOM LENSES

- > 11 standard functions for the control of pan & tilt motors and zoom lenses, 1 function for the control of one auxiliary service (dry contact)
- > Aux can be used for wiper operation
- > Weatherproof box: IP56
- > Integrated protocol Pelco D
- > RS232, RS485 and over Coax (through SM42A-82A and SM84A-164A matrix) selectable communication
- > Operating temperature: -20°C + 50°C (-4°F up to 122°F)
- > RS232, RS485 repeater for daisy chain configuration
- > Power supply: 230V AC/50 Hz or 115V AC/60 Hz or 24V AC 50/60 Hz



DTRX3

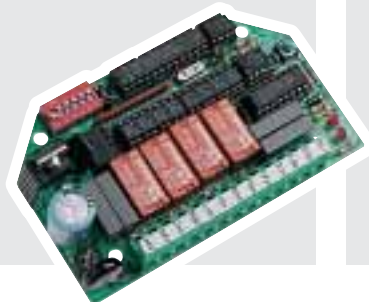
TELEMETRY RECEIVER

- > 17 functions: 11 standard functions for the control of P & T motors and zoom lenses, 6 functions for auxiliary services telemetry data (2x dry contacts, 1x 12V DC, 1x 24V AC, wiper and washer)
- > Mounted on IP56 weatherproof box
- > Maintenance of configuration even in case of power loss
- > Up to 14 presets
- > 4 alarm inputs, (prepositioning in case of alarm)
- > Preset Autotest functions
- > Integrated protocol Pelco "D"
- > Selection of the pan & tilt power supply (24V AC or 230V AC) and camera (12V DC or 24V AC)
- > RS232, Current Loop, RS485 or over the Coax (with optional card DTCOAX) selectable communication
- > Available version 24V AC (DTRX324)

MICRODEC485

TELEMETRY DATA MINI RECEIVER, FOR THE REMOTE CONTROL OF PAN&TILT MOTORS AND ZOOM LENSES

- > 8 functions (Pan, Tilt, Zoom and Focus)
- > Possibility to mount inside HEG, HEB camera housings
- > Control of a 24V AC pan & tilt motor and of zoom/focus functions of a 12V DC polarity inversion zoom lens
- > RS485 serial communication
- > Max 32 addressable receivers
- > Power supply: 24V AC, 50/60 Hz



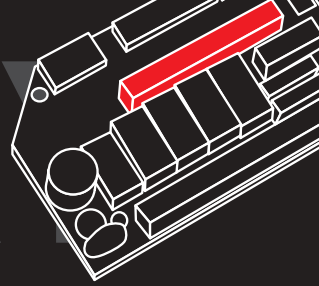
DTCOAX

OVER THE COAX BOARD FOR DTRX3 RECEIVER

- > Easy installation on DTRX3 receiver
- > Over the coax data receiving through SM42A-82A and SM84A-164A
- > Max distance from matrix: 350 m (1100 ft)



TELEMETRY



TELEMETRY					
	DCTEL	DCIR	DCJ	DCT	
Max receivers	16	16	999*	999*	* On each telemetry line
Autopan / Preset	•	•	•	•	
Patrol		•	•	•	
TELEMETRY RECEIVERS				P&T'S	
ULISSE	•	•	•	•	ULISSE
MISTRAL	•	•	•	•	MISTRAL
DTRXDC			•	•	PTH355P
DTRX3	•	•	•	•	PTH300P, PTH900P, NXPTH200
DTMRX	•	•	•	•	PTH310, PTH910, NXPTH210, IPT/H720
DTMRX24 / MICRODEC485	•	•	•	•	PTH311, PTH911, NXPTH211, IPT/H721



DTRXDC

TELEMETRY DATA RECEIVER, FOR REMOTE CONTROL OF VARIABLE SPEED PAN&TILT MOTOR PTH355P AND ZOOM LENSES

- > 13 functions (auxiliary functions 2x dry contacts)
- > 14 presets
- > Up to 7 selectable speeds for autopan
- > RS232 and RS485 selectable communication
- > Weatherproof box: IP56
- > Power supply: 230V AC 50/60 Hz

DCRE485

SERIAL DATA DISTRIBUTOR

- > 1 input, 8 serial outputs in RS485
- > Serial data back on eight outputs at the same time
- > Max connection distance 1200 m (3900 ft)
- > Power supply 230V AC, 50 Hz





The twisted pair video transmitter/receiver system is an interesting solution for all those installations where the distance that the video signal must cover via cable is very long. This is the right alternative to fiber optic systems for distances below 1500m (4900 ft). The receiver is available with weatherproof box or Euro-card. Video distribution amplifiers are available in different models at customer's choice, for every installation requirement.



TWP

PASSIVE TWISTED-PAIR VIDEO TRANSCEIVER

- > Transmission of B/W or color video signal
- > Dimensions with BNC (connector not included): 40x25x63 mm (1.57x0.98x2.5 in)
- > Maximum distance to the active receiver: up to 750 m (4900 ft) with UTP cat.5 cable



TWM1

SMALL TWISTED-PAIR VIDEO TRANSMITTER

- > Transmission of B/W or color video signal
- > Dimensions with BNC (connector not included): 40x25x63 mm (1.57x0.98x2.5 in)
- > Protected from ground loops and over voltage
- > Maximum distance to the receiver: up to 1500 m (4900 ft) for colour video signal, up to 2000 m (6900 ft) for B/W with UTP cat.5 cable
- > Power supply: 12V±24V, AC/DC, 2W max

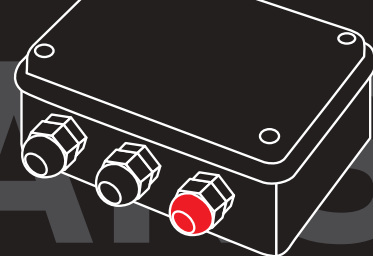


TWT1

OUTDOOR TWISTED PAIR VIDEO TRANSMITTER

- > Transmission of B/W or color video signal
- > Small IP56 weatherproof box
- > Maximum distance to the receiver: up to 1500 m (4900 ft) for colour video signal, up to 2000m (6900 ft) for B/W with UTP cat.5 cable
- > Protected from ground loops and over voltage
- > Power supply: 12V±24V, AC/DC, 2W max
- > Available version 230V AC (mod. TWT1A)

VIDEO TRANSMISSION AND DISTRIBUTION



TWRR1

TWISTED-PAIR RACK VERSION VIDEO RECEIVER

- > Europe standard board
- > Same technical feature of the TWRB1
- > Maximum distance to the transmitter:
 - up to 1500 m (4900 ft) for colour video signal,
 - up to 2000 m (6900ft) for B/W with UTP cat.5 cable
- > Protected from ground loops and over voltage

TWRC1

RACK BOX FOR TWRR1 CARDS

- > Up to max 14 TWRR1
- > 19" rack, 3HE
- > Power supply included
- > 13-place rack case with closing plates for unused places



TWRB1

OUTDOOR TWISTED-PAIR VIDEO RECEIVER

- > Reception of B/W or color video signal
- > Small IP56 weatherproof box
- > Maximum distance to the transmitter:
 - up to 1500 m (4900 ft) for colour video signal,
 - up to 2000 m (6900 ft) for B/W with UTP cat.5 cable
- > Protected from ground loops and over voltage
- > Power supply: 12V±24V, AC/DC, 2W max
- > Available version 230V AC (mod. TWRB1A)

VD

VIDEO SIGNAL DISTRIBUTOR AMPLIFIER

- > Available in the versions with 1, 4, 8 inputs and 8, 16 outputs
- > For color or B/W video signals
- > The input signal is amplified and distributed to the available outputs
- > By means of VD816PR1 and VD48P1 versions, it is possible to select how many outputs can be associated to a video input





The Videotec infrared illuminators have been designed to increase as much as possible the duration of the lamps and therefore to reduce the need for maintenance. For this reason, particular attention has been paid to optimising heat dissipation which, thanks to progressive finning, is at a maximum in the area of the lamp filament. The illuminator is made of die-casted aluminium and is black painted using epoxy-polyester powder. The bolts and screws used are in stainless steel. Lamps of different illumination beams are available. Their attractive design means that they are ideal for use in indoor environments.

IR50, 230V

INDOOR OUTDOOR INFRARED ILLUMINATOR

- > Made of die-casted aluminium
- > Painted black epoxy-polyester powder
- > IP66
- > 850nm infrared filter
- > Power supply: 230V AC
- > Consumption 50 W
- > Lamp standard bayonet mount
- > Weight 0.9 Kg (1.9 lb)



IR50, 12V

INFRARED ILLUMINATORS FOR INDOOR/OUTDOOR

- > Made of die-casted aluminium
- > Painted with black epoxy-polyester powder
- > IP66
- > 850nm infrared filter
- > Power supply: 12V AC/DC
- > Consumption: 50 W for IR50
- > Available lamps with different angle beams
- > Lamp standard mounting
- > Weight 0.9 Kg (1.9 lb)



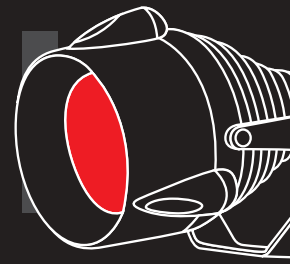
IR300, 230V

INDOOR OUTDOOR INFRARED ILLUMINATOR

- > Made of casted aluminium
- > Painted black epoxy-polyester powder
- > IP65
- > 850nm infrared filter
- > Power supply: 230V AC
- > Consumption: 300 W
- > Lamps with different light beams are available
- > Weight 5.3 Kg (11.6 lb)



INFRARED ILLUMINATORS



INFRARED ILLUMINATORS FEATURES

MODEL	V AC	HORIZONTAL BEAM	VERTICAL BEAM	DISTANCE *	
				m	ft
IR50 spot	12	10°	10°	20	65
IR50 flood	12	40°	40°	16	52
IR50 wide	12	60°	60°	12	39
IR50 flood	230	40°	40°	16	52
IR300 spot	230	10°	8°	65	213
IR300 flood	230	23°	10°	50	164
IR300 wide	230	40°	20°	35	114

* Typical distance of the subject to illuminate; it is in function of the reflection coefficient of the illuminated scene

ACCESSORIES



2 IR300 + ULISSE



OHPVIRA

ADAPTER FOR MOUNTING OF ONE IR50 INFRARED ILLUMINATOR ON VERSO, HOV32 AND VERSO COMPACT HOUSINGS



IRPS12

POWER SUPPLY FOR ILLUMINATORS 12V AC

> Power supply 230/12V AC 75VA



OIRCR

NIGHT SWITCH FOR INFRARED ILLUMINATORS

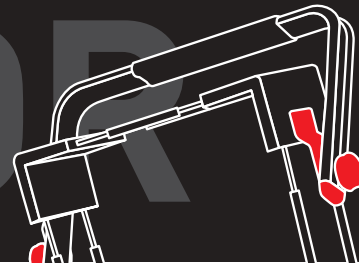
> Power supply 230V AC 50/60Hz



IRBA

BRACKET FOR MOUNTING OF TWO INFRARED ILLUMINATORS IR50 ON HOUSINGS

> Made of die-casted aluminium
> Painted with epoxy polyester powder RAL9002



Videotec mounts have been designed to support firmly the weight of monitors, conferring at the same time a nice and modern aspect to the whole. Entirely made of aluminium painted with epoxy polyester powder, they offer a wide range of adjustments so that they can be adapted to monitors with the most various shape. They consist of modular elements, which are the same for all mounts, such as for example the mounting accessories. The mounting system with tie-rods and corner adaptors covered with rubber prevents the monitor from being damaged.



MID3 - MID4 DOUBLE TIE ROD MOUNT

- > Made by modular aluminium
- > MID3 for 14"÷21" monitors: min. 367,5x367,5 mm [14.4x14.4 in]; max 532,5x532,5 mm [20.9x20.9 in]
- > MID4 for 21"÷28" monitors: min. 510x510 mm, [20x20 in]; max 675x675 mm, [26.5x26.5 in]
- > Rubber monitor protection
- > Ceiling mount MCMB, with available extension WCPMB
- > Wall mount MWM4



MIS1 - MIS2 SINGLE TIE ROD MOUNT

- > Made by modular aluminium elements
- > MIS1 for 9"÷12" monitors: min. 212,5x212,5 mm [8.3x8.3 in]; max 325x325 mm, [12.7x12.7 in]
- > MIS2 12"÷14" monitors: min. 275x275 mm [10.8x10.8 in]; max 377,5x377,5 mm [14.8x14.8 in]
- > Rubber monitor protection
- > Ceiling mount MCMB, with available extension WCPMB
- > Wall mount MWM1

MCMB CEILING MOUNT BRACKET

- > Made by aluminium tube painted
- > Suitable for MIS and MID models
- > 850 mm (33.5 in) in length

WCPMB EXTENSION MODULE FOR MCMB BRACKET

- > Made by aluminium tube
- > 500 mm (19.6 in) in length



MWM1 - MWM4 WALL MOUNT BRACKET

- > Made by aluminium tube
- > Suitable for MIS and MID models

MHSW1 WALL MONITOR SUPPORT

- > Made by aluminium tube and steel tray
- > Suitable for 9"-12"-14" monitors



Printed in Italy
© 2006 Videotec

Videotec Graphic Dept.:
Alberto Borgo, Andrea Martini, Claudia Traverso

All cameras and lens shown have only demonstration purposes
and are not supplied with the products. Further information
are available in the technical data sheets
in the product pages at www.videotec.com.

Specifications are subject to change without notice.
Weights and dimensions are indicative.

March 2006. All previous catalogues are obsolete.



HEADQUARTERS ITALY

VIDEOTEC S.p.A.

Via Friuli, 6
I-36015 SCHIO (VI) Italy
Tel. +39 0445 697411
Fax +39 0445 697414
info@videotec.com
www.videotec.com

FRANCE

VIDEOTEC FRANCE S.A.R.L.

Voie du Futur - Zac des Portes
27100 Val de Reuil, France
Tel. +33 2 32094900
Fax +33 2 32094901
videotec.yr@wanadoo.fr
www.videotec.com

UK / IRELAND

VIDEOTEC UK SALES

Tel. / Fax +44 02392 477621
uksales@videotec.com
www.videotec.com

U.S.A. / CANADA

VIDEOTEC SECURITY, Inc.

1 Ottilio Dr.
TOTOWA, NJ 07512 - USA
Tel. +1 973 5950788
Fax +1 425 6484289
usasales@videotec.com
www.videotec.us

ASIA PACIFIC

VIDEOTEC (HK) Ltd

Unit 2,8/F, Vanta Industrial Centre
21-33 Tai Lin Pai Road
Kwai Chung, NT, Hong Kong
Tel. +852 2333 0601
Fax +852 2311 0026
info@videotec.com.hk
www.videotec.com.hk