

**VIDEOTEC**  
CATALOGUE  
**2008**

**CCTV SYSTEMS**  
[WWW.VIDEOTEC.COM](http://WWW.VIDEOTEC.COM)

EN







Videotec is not a complex or bureaucratic organization; we believe this enables us to continue improving our products and services, allowing greater flexibility in front of a rapidly changing market.

#### **REAL MANUFACTURER - REAL BRAND**

From our 13.000 sqm production plants, products are distributed and installed all over the world.

#### **WIDE RANGE OF AVAILABLE SOLUTIONS AND PRODUCTS**

Videotec's products have been designed to operate perfectly in a wide range of applications and environments. Most products are immediately available thanks to high ex-stock capacity and fast delivery service.

#### **R&D**

The engineering team successfully develop products with ease of use, simplicity and durability combined with aesthetics into the whole range. Our ongoing commitment is to bring new technologies to the marketplace.

#### **SALES AND TECHNICAL SUPPORT**

With training programs for distributors, installers and users, instruction manuals and literature available in different languages, an interactive easy to use website, and above all a direct communication with the manufacturer, all of this enables us to surpass customer's expectations.

#### **AUTOMATION**

Production is carried out across fully automated assembly lines obtaining cost-effective products thanks to the scale economy.



















**DOCCTEN08 / Catalogue 2008 / Revision 0825 / English**

All cameras and lenses shown are only for demonstration purposes and are not supplied with the products (except for "ULISSE CAMERA"). Further information are available on the technical data sheets in the product pages at [www.videotec.com](http://www.videotec.com). The information can't be either completely or partly reproduced, modified or recorded in a filing system and transmitted in any shape or with any electronic, mechanical or recording means, without the written permission of Videotec S.p.A. Specifications are subject to change without notice. Weights and dimensions are indicative.

**June 2008. All previous catalogues are obsolete.**

# CONTENTS

CAMERA HOUSINGS	4	
BRACKETS AND ADAPTORS	10	
PAN&TILT'S AND CONTROLS	14	
VANDAL RESISTANT HOUSINGS	16	
STAINLESS STEEL SYSTEM	18	
EXPLOSION-PROOF SYSTEMS	22	
THERMAL IMAGING CAMERA SYSTEMS	24	
INTEGRATED POSITIONING UNITS	26	
DIGITAL VIDEO SYSTEMS	30	
DISCREET SURVEILLANCE DOMES	32	
VIDEO SWITCHING	38	
CONTROL KEYBOARDS	40	
TELEMETRY	44	
VIDEO TRANSMISSION AND DISTRIBUTION	46	
INFRARED ILLUMINATORS	48	
MONITOR MOUNTS	51	

## HOV

### SIDE OPENING ALUMINIUM HOUSING

- Built in die-cast aluminium and ABS sunshield
- IP66 (with cable glands or optional sealing rings)
- Installations with 3 standard cable glands and bracket or with cable management bracket
- Version available with a very efficient cooling system for installation with IP cameras and for high environmental temperature
- Available accessories: sunshield, heater, camera power supply, fan-assisted heater, blower and air filter, alarm tamper kit, integrated wiper and washer pump



## VERSO

### SIDE OPENING POLYCARBONATE HOUSING

- IP66 (with cable glands or optional sealing rings)
- 3 cable glands for standard bracket or cable management bracket
- Version available with a very efficient cooling system for installation with IP cameras and for high environmental temperature
- Available accessories: sunshield, heater, camera power supply, fan-assisted heater, blower and air filter, alarm tamper kit



VERSO + IR50 + WBOVA2 + OHVIRA

Videotec housings have been designed and constructed to protect cameras against agents and dust present in the atmosphere. The housings have been produced using extrusions and die-castings in highest quality aluminium and innovative tecnopolymer materials. The care taken during their manufacture ensures maximum solidity and reliability, further to an easy installation and service. These products are epoxy powder painted colour RAL9002, while bolts and screws used are in stainless steel. The numerous available accessories, like heater, camera power supply, blower and air filter, wiper and washer satisfy any installation requirement.



## VERSO COMPACT

### COMPACT MODEL OF VERSO

- Completely built in polycarbonate
- IP66 (with cable glands or optional sealing rings)
- Side opening
- Installation with 2 standard cable glands and bracket or with cable management bracket
- Available accessories: sunshield, heater, camera power supply, fan-assisted heater



VERSO COMPACT + WBJA



VERSO COMPACT + WBOVA2

## HEG

### THE LARGEST HOUSING OF THE RANGE

- Built in die-cast and extruded aluminium
- IP66
- Slide extractable body
- 3 cable glands
- Version available with 3+1 and 6+1 poles connectors and 1 BNC complete of prewired cable for video input (instead of regular cable glands), Mod. 036
- Available version with a very efficient cooling system for installation with IP camera and for high environmental temperature
- Available accessories: sunshield, heater, camera power supply, blower and air filter, wiper and washer, reinforced heater (for temperature down to -50°C, -58°F), bracket for mounting 2 IR50 infrared illuminators



HEG + VIP6A

## HEP

### PROFESSIONAL WEATHERPROOF HOUSING

- Built in die-cast and extruded aluminium
- IP66
- Slide extractable body
- 2 cable glands
- Version with 30 poles connector (Mod. 032)
- Version with 3+1 poles connector and BNC factory installed, complete with prewired cable for video input (Mod. 038)
- Available accessories: sunshield, heater, camera power supply, blower and air filter and double power heater for temperature down to -40°C (-40°F)



## HEK

### ALUMINIUM-POLYMERIC HOUSING

- Built in tecnopolymer and aluminium
- IP66 (with cable glands or optional sealing rings)
- Slide extractable body with hinged system
- Installations with 3 standard cable glands and bracket or with cable management bracket
- Available accessories: sunshield, heater, fan-assisted heater, camera power supply, blower and air filter



## HEA

### STYLISH WEATHERPROOF HOUSING

- Built in die-cast and extruded aluminium
- IP66, IP67
- Slide extractable body with hinged system
- 2 cable glands
- Available accessories: sunshield, heater, fan-assisted heater, camera power supply, blower and air filter



## HEB

### ALUMINIUM CAMERA HOUSING STANDARD OR WITH CABLE MANAGEMENT BRACKET

- Built in die-cast and extruded aluminium
- IP66, installed with cable glands or with optional sealing rings
- Slide extractable body with hinged system
- 3 cable glands for standard bracket or cable management bracket
- Available accessories: sunshield, heater, fan-assisted heater, camera power supply, blower and air filter





## HEM

### MEDIUM WEATHERPROOF HOUSING FOR GENERAL PURPOSE

- Built in die-cast and extruded aluminium
- IP66
- Slide extractable body with hinged system
- 2 cable glands
- Available accessories: sunshield, heater, fan-assisted heater, camera power supply, blower and air filter



## HET

### MINI WEATHERPROOF HOUSING

- Built in die-cast and extruded aluminium
- IP66
- Slide extractable body with hinged system
- 2 cable glands
- Available accessories: sunshield, heater, junction box with camera power supply



HET + WBCAA

## HOUSING ACCESSORIES

### SUNSHIELD

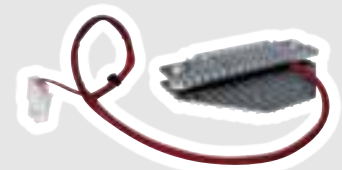
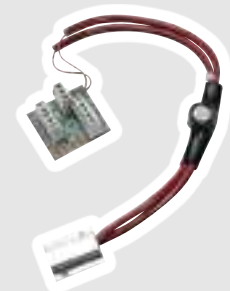
Protection against solar rays and reduction of housing internal temperature. Highly recommended for outdoor installation.

### FAN ASSISTED HEATER

The fan allows the forced air circulation and homogeneous temperature inside the housing. Available for VERSO, VERSO COMPACT and HOV housings.

### HEATER

Circuit made up of a thermostatically controlled 20W or 40W heating element PTC  $T_{on} \leq 15^{\circ}C$  ( $59^{\circ}F$ );  $T_{off} \geq 22^{\circ}C$  ( $71^{\circ}F$ ). It is available in 12Vdc/24Vac voltage or 115/230Vac voltage.



### REINFORCED HEATING

Circuit made up of a thermostatically controlled double PTC or triple fan-assisted PTC for installations where external temperatures are very rigorous. Operating temperatures: down to  $-40^{\circ}\text{C}$  ( $-40^{\circ}\text{F}$ ), for the double heater, down to  $-50^{\circ}\text{C}$  ( $-58^{\circ}\text{F}$ ), for the triple fan-assisted heater.



### CAMERA POWER SUPPLY

Camera feeding circuit, which can be installed inside the housing, available in different versions: 115/230Vac input and 24Vac/12Vdc output.



### BLOWER

Blowing circuit with a thermostatically controlled cooling blower ( $T_{on} \geq 35^{\circ}\text{C}$ ,  $95^{\circ}\text{F}$ ;  $T_{off} \leq 20^{\circ}\text{C}$ ,  $68^{\circ}\text{F}$ ) and air filter. It is available in 12Vdc, 24Vac and 230Vac versions, pre-installed in the housing or as optional kit.



### WEATHERPROOF JUNCTION BOX

External junction box, weatherproof standard IP55, allowing the housing of wiring harnesses or auxiliary cards. The model containing the camera power supply card, available in the versions 230Vac input and 24Vac, max 400mA, or 12Vdc output max 1A, is particularly used combined with HET housings.



### WIPER (HEG)

Wiper kit including the support for the pump washing injector. Available in 24Vac and 230Vac versions.



### WASHER AND RESERVOIR (VIPWAS AND UPTWAS SERIES)

Glass washing kit with 5l (1.3gal) or 25l (6.6gal) reservoir. The pump is available in 24Vac and 230Vac. A special version of the washer and reservoir for high delivery is available for up to 30m (98.5ft).



### WIPER AND WASHER CONTROL

Optional board for wiper and washer remote control of stand-alone housings, via RS485. Compatible only with UPTWAS pumps series. For HEG and HOV housings.



### ALARM TAMPER SWITCH

The alarm contact allows the checking of the eventual tampering.



### SEALING RINGS FOR CABLE MANAGEMENT BRACKET

To be used with wall cable management bracket for IP66 weatherproof protection.





**HOUSING AND ACCESSORIES FEATURES**

	HOV	VERSO	VERSO COMPACT	HEG	HEP	HEK	HEA	HEB	HEM	HET
Useful internal area BxH mm (in)	100x70 (3.3x2.7)	70x70 (3.5x3.3)	63x63 (5.5x3.5)	140x90 (3.2x2.4)	90x80 (2.7x2.5)	82x62 (3.5x3.3)	84x70 (2.4x2.1)	90x85 (3.9x2.7)	70x65 (2.7x2.7)	62x55 (2.4x2.4)
Useful length mm (in)	250 (9.8)	270 (10.6)	210 (8.6)	365 (14.4) 450 (17.7)	260 (10.2) 320 (12.5)	260 (10.2) 320 (12.5)	260 (10.2) 320 (12.5)	260 (10.2) 320 (12.5)	220 (8.6) 260 (10.2) 300 (11.8)	100 (3.9) 160 (6.2) 220 (8.6) 300 (11.8)
IP rating	IP66 + cable glands	IP66 + cable glands	IP66 + cable glands	IP66	IP66	IP66 + cable glands	IP66	IP66 + cable glands	IP66	IP66
Cable glands	3xM16	3xM16	2xM16	2xM16	2xM16	3xM16	2xM16	3xM16	2xM16	2xM16

**ACCESSORIES**

Sunshield	•	•	•	•	•	•	•	•	•	•
Heater 20W, 12Vdc/24Vac	•	•	•	•	•	•	•	•	•	• except 100mm
Heater 40W, 115/230Vac	•	•	•	•	•	•	•	•	•	• except 100mm
Blower 12Vdc	•	•		•	•	•	•	•	•	
Blower 24Vac	•	•		•	•	•	•	•	•	
Blower 230Vac	•	•		•	•		•	•		
Internal camera power supply 12Vdc OUT	100÷240Vac IN 1A max	100÷240Vac IN 1A max	100÷240Vac IN 1A max	100÷240Vac IN 1A max	230Vac IN 400mA max	100÷240Vac IN 1A max	230Vac IN 400mA max	100÷240Vac IN 1A max	230Vac IN 400mA max	
Internal camera power supply 24Vac OUT	230Vac IN 400mA max	230Vac IN 400mA max	230Vac IN 400mA max	230Vac IN 400mA max	230Vac IN 400mA max	230Vac IN 400mA max	230Vac IN 400mA max	230Vac IN 400mA max	230Vac IN 400mA max	
Weatherproof junction box	•	•	•	•	•	•	•	•	•	•
Camera power supply 12Vdc OUT in weatherproof junction box	100÷240Vac IN 1A max	100÷240Vac IN 1A max	100÷240Vac IN 1A max	100÷240Vac IN 1A max	100÷240Vac IN 1A max	100÷240Vac IN 1A max	100÷240Vac IN 1A max	100÷240Vac IN 1A max	100÷240Vac IN 1A max	100÷240Vac IN 1A max
Camera power supply 24Vac OUT in weatherproof junction box	230Vac IN 400mA max	230Vac IN 400mA max	230Vac IN 400mA max	230Vac IN 400mA max	230Vac IN 400mA max	230Vac IN 400mA max	230Vac IN 400mA max	230Vac IN 400mA max	230Vac IN 400mA max	230Vac IN 400mA max
Double heating 80W, 115/230Vac				•	•					
Triple fan assisted heater 120W, 115/230Vac				•						
Wiper 24Vac	built-in			•						
Wiper 230Vac	built-in			•						
Washer pump with tank 24Vac	•			•						
Washer pump with tank 230Vac	•			•						
Fan assisted heater 12Vdc	•	•	•							
Fan assisted heater 24Vac	•	•	•			•	•		•	
Fan assisted heater 230Vac	•	•	•							
Wiper/Washer control	•			•						
Tamper switch	•	•								

## HOUSING BRACKETS

### WBJA

#### WALL BRACKET

- Fully adjustable swivel head
- Die-cast aluminium
- 25kg (55lb) load rating
- For large-medium housings



### WBMA

#### WALL BRACKET

- Fully adjustable swivel head
- Die-cast aluminium
- 25kg (55lb) load rating
- For medium-small housing



### WBOVA2

#### WALL BRACKET

- Internal cable channel
- Fully adjustable swivel head
- Die-cast aluminium
- 25kg (55lb) load rating



### WBOV3A2

#### WALL BRACKET

- Internal cable channel
- Fully adjustable swivel head
- Die-cast aluminium
- 25kg (55lb) load rating
- Support plate and weatherproof junction box for wiring directly in the box



### WCM3A

#### CEILING MOUNT

- Fully adjustable swivel head
- Made of aluminium
- 15kg (33lb) load rating



### WCM4A2

#### CEILING MOUNT

- Internal cable channel
- Made of curved aluminium tube
- 15kg (33lb) load rating
- 500mm (19in) linear extension available with WCM5A



### WCM5A

#### CEILING MOUNT

- With integrated sturdy joint
- Made of curved aluminium
- 15kg (33lb) load rating
- 500mm (19in) linear extension available with WCM5A



### WCM5A

#### LINEAR EXTENSION FOR WCM4A2 AND WCM5A

- Made of aluminium tube
- It allows a 500mm (19in) extension



Easy to install, sturdy and reliable, Videotec brackets meet different requirements, both for ceiling and wall installations. Epoxy powder painted, RAL9002 colour, with stainless steel screws, each bracket has been designed to be combined with various housings, for an easy choice and handling.

## WFWCA

### COLUMN/PARAPET MOUNT

- With integrated joint
- Made of aluminium
- 15kg (33lb) load rating
- Available extension through WFWBTA (see P&T brackets)



## P&T BRACKETS

## PTAC

### WALL MOUNT FOR PTH300 SERIES AND LIGHT DUTY P&T MOTORS

- Made of aluminium
- 35kg load rating (77lb)



## PTBC

### WALL BRACKET FOR PTH900 P&T MOTORS

- Made of die-cast aluminium
- 50kg (110lb) load rating



## PTDC

### CEILING BRACKET FOR PTH900, PTH300 AND PTH355P P&T MOTORS

- Made of aluminium
- 50kg (110lb) load rating



## PTPC

### TOP OF POLE ADAPTOR PLATE FOR PTH900, PTH300 AND PTH355P P&T MOTORS

- Made of steel
- Pole diameter 80÷120mm (3.1÷4.7in)



## WFWBTA

### COLUMN BRACKET FOR PTH900, PTH300 AND PTH355P P&T MOTORS

- Made of aluminium
- 50kg load rating (110lb)



## ADAPTORS

### WSFPA

#### POLE MOUNT

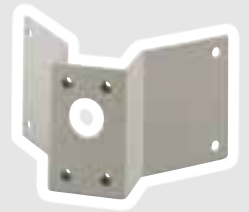
- Die-cast aluminium
- For WBJA, WBMA, WBOVA2 and PTAC brackets
- Pole diameters 65÷110mm (2.5÷4.3in)



### WCWA

#### CORNER ADAPTOR

- Steel made
- For WBJA, WBMA, WBOVA2 and PTAC brackets



### WCPA

#### REINFORCING SUPPORT PLATE FOR POOR CONSISTENCY WALLS

- Die-cast aluminium
- For WBJA, WBMA, WBOVA2 and PTAC brackets
- Available with a supporting box with internal passage of cables



### PTCC1

#### POLE MOUNT ADAPTOR FOR PTBC BRACKET

- Thick die-cast aluminium
- 50kg (110lb) load rating
- Pole diameters 80÷150mm (3.1÷5.9in)



### WCWGC

#### CORNER ADAPTOR FOR PTBC BRACKET

- Made of steel with stainless steel fixing screws
- 50kg (110lb) load rating

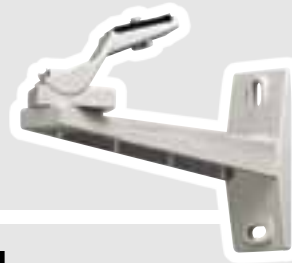


## CAMERA BRACKETS

### WBCAA

#### WALL/CEILING MOUNT

- Die-cast aluminium
- 5kg (11lb) load rating
- Recommended for small housings (HET models 100mm/3.9in and 160mm/6.3in)



### WBCLA

#### WALL/CEILING MOUNT

- Resistant tecnopolymer material
- 3kg (6.6lb) load rating
- Length: 170mm (6.6in)
- Adjustment and fixing by only one bolt



### WBCV

#### SERIES OF WALL/CEILING BRACKETS

- Made of aluminium with base of nylon
- Available lengths: 80, 140, 190mm (3.1, 5.5, 7.4in)
- 50mm (1.9in) optional extension (WBCP5A)
- Adjustment and locking by a manual ring



### WBCD

#### SERIES OF WALL/CEILING BRACKETS

- Made of aluminium with swivel and base of nylon
- Available lengths: 80, 140, 190mm (3.1, 5.5, 7.4in)
- 50mm (1.9in) optional extension (WBCP5A)
- Joint adjustment by a single bolt



## PTH355P

### OUTDOOR VARIABLE SPEED PAN&TILT MOTOR

- Loads up to 12kg (26lb)
- IP66
- Made of die-cast aluminium and painted with epoxy polyester powder
- Controlled by the DTRXDC telemetry receiver
- Preset function
- Autopan function
- Internally adjustable horizontal and vertical limit switches
- DC motors: (0-24Vdc)
- Horizontal speed from 0 to 30°/s, vertical from 0 to 18°/s



## PTH300

### OUTDOOR PAN & TILT MOTOR

- Loads up to 12kg (26lb)
- IP66
- Made of die-cast aluminium and painted with epoxy polyester powder
- Standard autopan function
- Optional preset
- Versions 24Vac and 230Vac, 50/60Hz
- Internally adjustable horizontal and vertical limit switches
- Horizontal fixed speed 6°/s, vertical fixed speed 3°/s



## PTH900

### STURDY OUTDOOR PAN & TILT MOTOR

- Loads up to a 30kg (66lb)
- IP66
- Made of die-cast aluminium and painted with epoxy polyester powder
- Standard autopan
- Optional preset
- Optional motors heaters for low temperature applications down to -40°C (-40°F)
- Versions 24Vac and 230Vac, 50/60Hz
- Internally adjustable horizontal and vertical limit switches
- Horizontal speed 6°/s, vertical speed 3°/s



## IPT - IPTS - IPHS

### INDOOR PAN & TILT MOTORS

- For loads up to 5kg (11lb)
- Sturdy die-cast aluminium structure, protected by a nylon shell
- Integrated Autopan function
- Wall mounting: IPT
- Ceiling mounting: IPTS and IPHS
- 24Vac and 230Vac versions
- Available 50 and 60Hz versions
- Externally adjustable horizontal limit switches, vertical limit switches fixed at 90°
- Horizontal fixed speed 6°/s, vertical fixed speed 3°/s



IPT

IPTS

IPHS



Constructed to ensure solidity and reliability, Videotec pan and tilt motors have been designed and tested for use in the severest working conditions. The pan and tilt motors for outdoor use ensure a high level of protection against attacks from external atmosphere agents. At the same time, the precise mechanical construction and the use of highly reliable motors reduce the need of periodical maintenance even in situations of heavy mechanical stress. The same care and attention to details have been paid to the construction of the P&T motors for indoor use. Videotec pan & tilt controls, easy to install and use, allow the control of P&T motors and motor-driven zoom lenses.



## CBZ

### DESKTOP CONTROLLER FOR PAN & TILT AND ZOOM LENS

- Aluminium enclosure and polycarbonate membrane keyboard
- Direct connection and feeding to the pan & tilt motor
- Control of Autopan function
- Suitable for common ground or polarity inversion motor-driven zoom lenses, 6/12Vdc
- 24Vac and 230Vac, 50/60Hz versions



### HOUSINGS/BRACKETS COMPATIBILITY

	WALL			CEILING			COLUMN	WALL OR CEILING
	WBJA	WBMA	WBOVA2	WCM3A	WCM4A2	WCM5A2	WFWCA	WBCAA
Length mm (in)	285 (11.2)	226 (8.8)	204 (8.0)	300 (11.8)	412 (16.2)	412 (16.2)	185 (7.2)	170 (6.6)
HOUSINGS								
HOV	•		•	•	•	•	•	
VERSO	•		•	•	•	•	•	
VERSO COMPACT	•	•	•	•	•	•	•	
HEG	•					•	•	
HEP	•			•		•	•	
HEK		•	•	•	•	•	•	
HEA		•		•		•	•	
HEB	•	•	•	•	•	•	•	
HEM		•		•		•	•	
HET		•		•		•	•	• only 100 and 160mm

### P&T/BRACKETS COMPATIBILITY

	WALL		CEILING	COLUMN	TOP POLE
	PTAC	PTBC	PTDC	WFWBTA	PTPC
Length mm (in)	360 (14.1)	458 (18.0)	320 (12.6)	185 (7.2)	
P&T'S					
PTH300	•	•	•	•	•
PTH355P	•	•	•	•	•
PTH900		•	•	•	•

## AVTPSKB

### VANDAL RESISTANT CEILING HOUSING FOR INDOOR INSTALLATION

- Made of steel 2,5mm (0.1in) thick
- Vandal resistant glass 4mm (0.15in) in polycarbonate
- Compass opening by means of a lock (two versions available, lock with single key or lock with common key)
- Without external screws
- Possibility of external connections by means of 3 M20 glands or directly from the ceiling
- Accessories available: thermostated heater, camera power supply and alarm tamper switch



## AVTPSC

### COMPACT VANDAL RESISTANT CEILING HOUSING FOR INDOOR INSTALLATION

- Made of steel 1,5mm (0.6in) thick
- Vandal resistant acrylic glass 4mm (0.15in)
- Compass opening by means of a lock (same lock/same key all housings)
- Without external screws
- Possibility of external connections by means of 2 M20 cable glands or directly from the ceiling
- Accessories available: thermostated heater and camera power supply



Particular attention has been paid during the design and construction of these products, as their characteristics are for use in particular situations. The vandal resistant housings have been produced in painted steel using epoxy polyester powder. The care taken during production of the housings ensures maximum solidity and reliability.

## AVBPH

### ARMoured LARGE HOUSING

- Produced in extremely thick aluminium extrusion, with front and rear bottom made of 30mm (1.1in) die-cast aluminium
- 3mm (0.1in) steel armour side plating
- IP54
- 18mm (0.7in) vandal-proof glass on vandal resistant metallic structure
- Standard accessories sunshield and heater; optional blower and camera power supply



## AVBPWBB

### WALL BRACKET WITH INTERNAL CABLE CHANNEL AND COUNTERPLATE

- Made of heavy gauge aluminium
- Wall bracket with cable channel with counterplate and external vandal resistant junction box (AVBPWB01B)



## AVTPSA

### VANDAL RESISTANT CORNER HOUSING FOR INDOOR INSTALLATION

- Made of steel 3mm (0.1in) thick
- Vandal resistant glass 4mm (0.15in) in polycarbonate
- Compass opening by means of a lock
- Without external screws



## AVTPSAM

### SMALL VANDAL RESISTANT CORNER HOUSING FOR INDOOR INSTALLATION

- Made of steel 3mm thick (0.1in) thick
- Vandal resistant glass 4mm (0.15in) in polycarbonate
- Compass opening by means of a tamperproof screw



## NXW

### LIQUID-COOLED HOUSING

- Made of AISI 316 stainless steel
- Steel cylindrical chamber for internal circulation of cooling liquid linked to an external circuit
- IP67
- 2 PG13,5 cable glands nickel-plated brass for external connections
- Standard air barrier
- Available accessories: camera power supply, filter group, toughened glass max temp. 290°C (554°F), VICOR glass max 400°C (752°F) or IR proof glass max temp. 290°C (554°F)



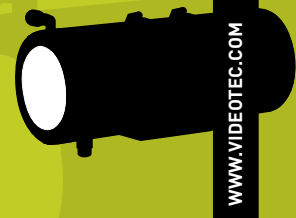
## NXM

### HOUSING FOR INSTALLATION IN AGGRESSIVE ENVIRONMENTS

- Entirely made of AISI 316 stainless steel
- Cylindrical body enclosed by two 9mm-thick circular flanges
- 2 PG13,5 cable glands nickel-plated brass for external connections
- IP68, submersible up to -50m (-130ft), equal to 5 BAR max pressure
- Accessories available: sunshield, heater kit and double power heater (for temperature down to -40°C (-40°F), camera power supply, air barrier + filtering group, wiper and washer



The stainless steel housings and P&Tís have been designed to protect the cameras from particularly aggressive environmental conditions. They are entirely made of AISI 304 or AISI 316 stainless steel. In consideration of the extremely severe specifications, each detail has been carefully analysed, obtaining in this way very reliable products, suitable for industrial uses.



## NXL

### LARGE HOUSING FOR BIG LENSES

- Entirely made of AISI 316 stainless steel
- Cylindrical body enclosed by two circular flanges, 12mm (0.47in) thick the front flange and 9mm (0.35in) thick the back flange
- 4 PG13,5 cable glands nickel-plated brass for external connections
- IP67
- Accessories available: sunshield, heater kit, camera power supply, wiper and washer



## NXJ

### LARGE HOUSING

- Entirely made of AISI 304 sheet steel
- Painted with epoxy polyester powder, RAL9002
- IP54
- Hooked opening system
- 2 PG16 cable glands for external connections
- Available accessories: standard sunshield and thermostat heater; optional blower, camera power supply, wiper and washer



NXL + NXFWBT

## NXPTH

### HEAVY DUTY PAN & TILT

- AISI 316 stainless steel
- IP67
- Max load 40kg balanced (88lb)
- Standard potentiometers for preset
- 24Vac or 230Vac, 50/60Hz versions
- Horizontal fixed speed 5°/s, vertical fixed speed 3°/s
- Suitable for NXM, NXL and NXJ housings



## BRACKETS

### NXFWBT

#### STAINLESS STEEL PARAPET MOUNT FOR NXPTH

- Made of AISI 316 stainless steel
- 70kg (154lb) load rating
- Compatible with: NXWBPTH bracket



### NXWBPTH1

#### WALL BRACKET FOR NXPTH

- AISI 316 stainless steel
- 70kg (154lb) load rating
- Compatible with NXCOL, NXCW and NXFWBT modular components



### NXWBL

#### WALL BRACKET FOR NXL HOUSING

- AISI 316 stainless steel
- 70kg (154.3lb) load rating
- Available modular components: NXCOL and NXCW



### NXWBS1

#### WALL BRACKET

- AISI 316 stainless steel
- 45kg (99lb) load rating
- Recommended housings: NXJ, NXM, NXW
- Available modular components: NXCOL and NXCW



### NXCOL

#### POLE MOUNT ADAPTOR

- AISI 316 sheet steel
- Pole diameter 110÷150mm (4.3÷5.9in)



### NXCW

#### CORNER MOUNT ADAPTER

- AISI 316 sheet steel



## ACCESSORIES

### ONXAB1

#### AIR BARRIER

- Made of AISI 316 stainless steel
- Recommended max air pressure: 1 BAR
- Optional on NXM and standard on NXW housings



### NXFIGRU

#### AIR FILTERING GROUP

- To be combined with ONXAB1 air barrier to clean the air from oil and water particles, generally coming from the compressor
- Filtering of particles with diameter higher than 0.2 micron
- Operating pressure 0.3÷2.5 BAR



### VIPNX

#### WIPER FOR HOUSING

- Made of AISI316 stainless steel
- IP66 enclosure
- Different voltages available, 230Vac or 24Vac, both 50/60Hz
- Connector 3+1 poles for easy wiring harness
- Easy installation and upgrade on NXM, NXL and NXJ housing

### VIPWAS - UPTWAS

#### WASHER AND RESERVOIR

- Glass washing kit available with 5l or 25l (1.3 or 6.6gal) reservoir
- The pump is available in 24Vac, 230Vac, and in 230Vac with high delivery, up to 30m (100ft)
- Available for NXM, NXL, NXJ series housings

### DTWRX

#### OPTIONAL BOARD FOR WIPER AND WASHER REMOTE CONTROL, VIA RS485. COMPATIBLE ONLY WITH UPTWAS PUMPS SERIES




NXL + VIPNX



## EXPTC

### EXPLOSION PROOF PAN&TILT WITH INTEGRATED CAMERA HOUSING


- Housing with the same specifications as the EXHC
- IP66
- Single multi-core cable ready wired up, included with the unit, comes out from the base of the P&T through a cable gland
- Horizontal range 360°, for fixed speed: 6°/s, vertical range -90° / +90° for fixed speed: 2.4°/s
- Equipped as standard with housing heater and preset; as options, housing sunshield and autopan
- Version available with reinforced housing heater (triple) 24Vac, P&T heater (double) 24Vac and special painting for low temperature applications (mod. EXPTC033R)
- Certificates:
  - IECEx Ex d IIC T6 Ex tD A21 IP66 T85°C
  - ATEX  II 2 GD Ex d IIC T6 tD A21 IP66 T85°C
  - GOST-R 1ExdIIC T6 и DIP A21 T<sub>A</sub> T6



EXPTC + EXPTS

## EXPTD

### EXPLOSION PROOF PAN&TILT WITH INTEGRATED CAMERA HOUSING EQUIPPED WITH GLASS PROTECTION DEVICE


- Housing with the same specifications as the EXHD
- IP66
- Single multi-core cable ready wired up, included with the unit, comes out from the base of the P&T through a cable gland
- Horizontal range 360°, for fixed speed: 6°/s, vertical range -90° / +90° for fixed speed: 2.4°/s
- Equipped as standard with housing heater and preset; as options with housing sunshield, autopan and replacement film
- Version available with reinforced (triple) housing 24Vac, (double) P&T heater 24Vac and special painting for low temperature applications (mod. EXPTD035R)
- Certificates:
  - IECEx Ex d IIC T6 Ex tD A21 IP66 T85°C
  - ATEX  II 2 GD Ex d IIC T6 tD A21 IP66 T85°C
  - GOST-R 1ExdIIC T6 и DIP A21 T<sub>A</sub> T6



EXPTD + EXPTS

## EXDTRX3 - EXDTRX324

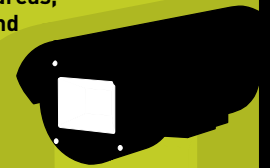
### TELEMETRY RECEIVER FOR EXPTC AND EXPTD EXPLOSION PROOF PAN&TILT

- 230Vac or 24Vac power supply
- EXDTRX3 allows the supply of Pan&Tilt heater
- 17 functions, preset, glass protection device and alarm feature included
- IP66
- 4 cable glands
- Maintenance of configuration even in case of power loss
- Up to 40 preset positions (MACRO protocol)
- 4 alarm inputs (prepositioning or patrol in case of alarm)
- Preset Autotest functions
- RS232, Current Loop, RS485 or over the Coax (with optional card DTCOAX) selectable communication
- Integrated protocol Pelco "D"
- ATEX  II 2 GD Ex d IIC T6 Ex tDA21 IP66 T85°C certified





The explosion proof equipment has been designed to meet rigorous requirements for installations in hazardous areas, where flammable gases and powders may be present. The EEX series has been certified to meet the ATEX, IECEx and GOST-R standards. The housing can accommodate most camera and lens combinations, while the P&T, thanks to the single multi-core pre-wired cable simplifies installation and maintenance. A wide range of solutions is being utilised in explosive and hazardous atmospheres throughout the world.



WWW.VIDEOTEC.COM



## EXHC

### EXPLOSION-PROOF HOUSING

- Constructed in solid, anticorodal aluminium alloy
- Powder painted RAL7032
- IP66
- 2 cable glands Exd 3/4" GAS allow the wiring with the exterior
- Standard equipped with heater, optionally with sunshield
- Version available with reinforced (triple) heater 24Vac and special painting for low temperature application (mod. EXHC003R)
- Certificates:
  - IECEx Ex d IIC T6 Ex tD A21 IP66 T85°C
  - ATEX Ex II 2 GD Ex d IIC T6 tD A21 IP66 T85°C
  - GOST-R 1ExdIICT6 и DIP A21 T<sub>A</sub> T6



EXHC + EXHS



EXHC003R + EXWBJ00R

## EXHD

### EXPLOSION-PROOF HOUSING WITH GLASS PROTECTION DEVICE

- Same features of EXHC but equipped with device for the protection of the glass installed on the front of the housing
- IP66
- Internal area: diameter 180x460mm (7x18in)
- The DC electric motor allows the winding of a Mylar film
- 350 steps of the film
- Accessories available: standard heater; optional sunshield and replacement film
- Version available with reinforced (triple) heater 24Vac and special painting for low temperature applications (mod. EXHD005R)
- Certificates:
  - IECEx Ex d IIC T6 Ex tD A21 IP66 T85°C
  - ATEX Ex II 2 GD Ex d IIC T6 tD A21 IP66 T85°C
  - GOST-R 1ExdIICT6 и DIP A21 T<sub>A</sub> T6



EXHD + EXHS

## EXPTWB

### BRACKET FOR EXPT EXPLOSION-PROOF PAN&TILT

- Constructed in solid, anticorodal aluminium alloy
- Colour: RAL7032
- Maximum capacity, non-static: 100kg (220lb)
- Available version with special painting for low temperature application (EXPTWB00R)



## EXBJ - EXWBJ

### BRACKET AND SWIVEL FOR EXH EXPLOSION-PROOF HOUSING

- Manufactured in anticorodal aluminium alloy
- Colour: RAL7032
- Maximum capacity, non-static: 35kg (77lb)
- Only swivel allows the application in different installations
- Version available with special painting for low temperature applications (EXWBJ00R)

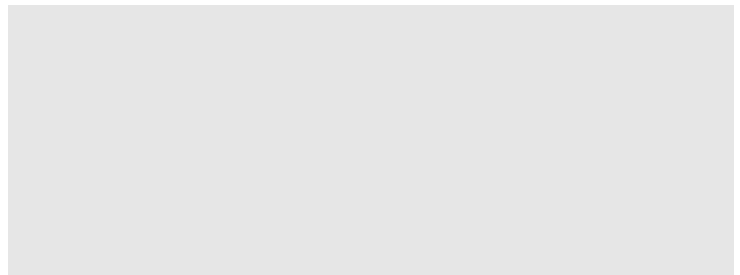




## ULISSE

### POSITIONING UNIT WITH HOUSING FOR THERMAL CAMERA

- Made of aluminium and polycarbonate
- Germanium glass
- IP66
- Easy installation and replacement on-site thanks to optional set-up data in flash memory and accurate mechanical construction
- Horizontal continuous rotation
- Variable speed: 0.1-100°/s Pan; 0.1-40°/s Tilt
- Autopan, Preset, Patrol
- Up to 250 Presets
- OSM configuration
- RS232 interface for PC set-up and firmware upgrade
- RS485, RS422
- Multiprotocol
- Patented



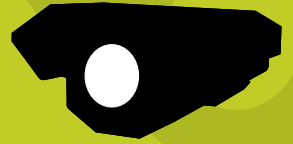
## HTG

### LARGE EXTRUDED ALUMINIUM HOUSING FOR THERMAL CAMERA

- Built in aluminium and epoxy powder painted
- Solid and reliable
- IP66
- Germanium window glass
- Standard accessories: sunshield and heater.  
Optional: power supply, wiper and washer



The housings, designed for the installation of thermal imaging cameras, are equipped with germanium glass transparent to infrared. These products are used in an extremely wide range of applications such as: fire monitoring and rescue, public safety, intruder monitoring (harbor, airport, dam, river), industrial monitoring, environment monitoring, military purposes, marine (port and harbor surveillance, vessel navigation), night vision security surveillance, etc.



## NTM

### STAINLESS STEEL HOUSING FOR THERMAL CAMERAS

- AISI 316 stainless steel construction
- For highly aggressive environments
- Germanium glass
- IP66
- Standard accessories, sunshield and heater; optional, power supply, wiper and washer



## NTL

### LARGE STAINLESS STEEL HOUSING FOR THERMAL CAMERAS

- Germanium window glass
- Available with different dimensions windows
- AISI 316 stainless steel construction
- For highly aggressive environments
- IP67
- Accessories available: sunshield, heater kit, camera power supply, wiper and washer



NTL + NXWBS1

## EXHC000G - EXPTC010G

### EXPLOSION-PROOF HOUSING AND PAN&TILT FOR THERMAL CAMERAS

- Constructed in solid, anticorrosive aluminium alloy
- Powder painted RAL7032
- Germanium window glass
- IP66
- Standard equipped with heater, optionally with sunshield
- Version available with reinforced (triple) heater 24Vac and special painting for low temperature application (EXHC003RG, EXPTC033RG)
- ATEX  $\text{Ex d IIC T6 tD A21 IP66 T85}^\circ\text{C}$ , GOST-R 1ExdIICT6 и DIP A21 T<sub>A</sub> T6 certified



EXPTC010G + EXPTS



# INTEGRATED POSITIONING UNITS

## ULISSE

### POSITIONING UNIT

- Made of aluminium and polycarbonate
- IP66
- Easy installation and replacement on-site thanks to optional set-up data in flash memory and accurate mechanical construction
- Horizontal continuous rotation
- Variable speed: 0,1-100°/s Pan; 0,1-40°/s Tilt
- Autopan, Preset, Patrol
- Up to 250 Presets
- OSM configuration
- RS232 interface for PC set-up and firmware upgrade
- RS485, RS422 control
- Version with incremental encoders for real time positioning feedback
- Reinforced heater for low temperature (UPTHT1)
- Multiprotocol
- Integrated wiper option
- Patented



ULISSE, the new positioning unit for dynamic outdoor surveillance. More than a PTZ, more than a Speed Dome, this advanced Videotec product integrates a high performance P&T head with a camera housing and telemetry receiver.



## ULISSE WITH INFRARED

### POSITIONING UNIT FOR DAY AND NIGHT SURVEILLANCE

- Made of aluminium and polycarbonate
- IP66
- Two infrared LED illuminators for night surveillance
- Available with/without camera and with/without wiper
- Easy installation and replacement on-site thanks to optional set-up data in flash memory and accurate mechanical construction
- Variable speed: 0,1-40°/s Pan; 0,1-30°/s Tilt
- Electronic limit switches
- Autopan, Preset, Patrol
- Up to 250 Presets
- OSM configuration
- Multiprotocol



NEW



## ULISSE CAMERA

### POSITIONING UNIT WITH INTEGRATED CAMERA

- Telemetry receiver, high performances P&T, camera housing and Sony block camera all-in-one
- Camera for day and night surveillance
- 36x Zoom Lens - High Telephoto Zoom and Wide Horizontal Field of View Capability
- EXView HAD CCD for high sensitivity in low light environments
- High-Performance Digital Signal Processing (DSP)
- Auto ICR (IR cut-filter removal)
- Dynamic Video Masking for privacy purposes
- Reinforced heater for low temperature (UPTHT2)



## BRACKETS

### UPTWBA

#### WALL BRACKET

- Made in die-cast aluminium
- Painted with epoxy polyester powder, RAL9002
- Designed to take internal cables



### UPTWBTA

#### PARAPET BRACKET

- Made in die-cast aluminium
- Painted with epoxy polyester powder, RAL9002
- Designed to take internal cables



## ACCESSORIES

### UPTWAS

#### WASHER PUMPS WITH RESERVOIR FOR WIPER

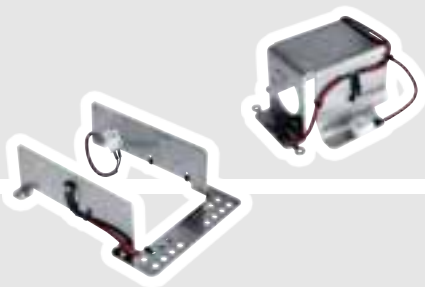
- Delivery up to max.5m
- Reservoir capacity: 25l (6.6gal)
- Standard versions in 230Vac (UPTWAS01B) and in 24Vac (UPTWAS02B)
- Special version with high delivery up to 30m (UPTWASA01B), 230Vac



### UPTHT1 - UPTHT2

#### REINFORCED HEATER FOR LOW TEMPERATURE APPLICATIONS

- UPTHT1 for versions with motorized lens. The operating temperature is set at -30°C (-22°F) but only with lenses that are guaranteed with an operating temperatures down to -20°C (-4°F)
- UPTHT2 for the versions with Sony block camera. The lowest operating temperature goes down to -30°C (-22°F)





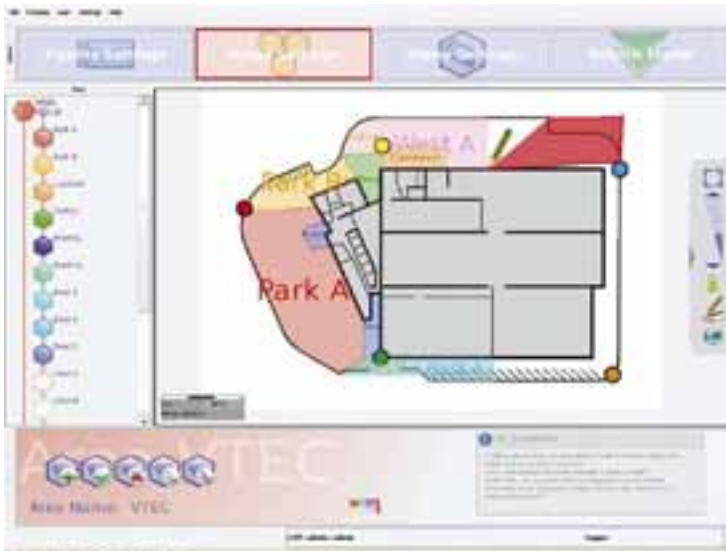
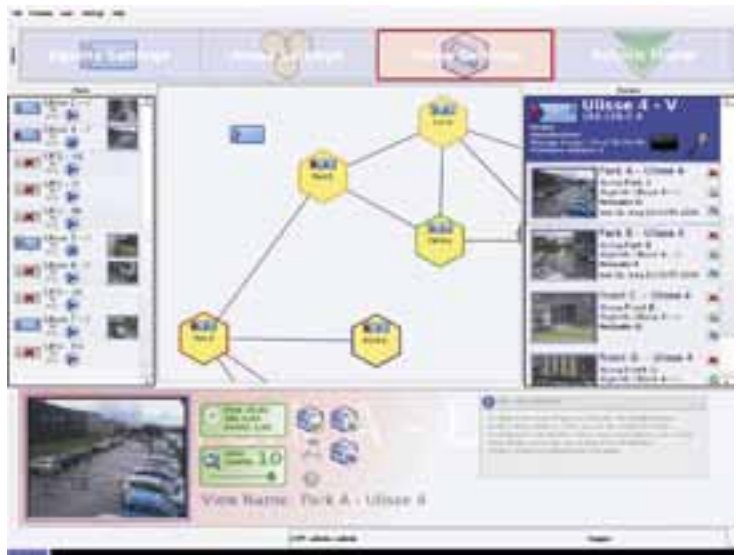
**ALBERT is a revolution in Video Content Analysis. Like a member of a team, ALBERT units communicate with each other to perform cooperative tasks.**



## ALBERT

### THE VIDEO AGENT

- Advanced Event Detector
- Cooperation between Video Agents
- Distributed recording system
- Self-adaptive algorithms
- Drag'n'drop set-up
- PTZ control
- Multiple stream, adaptive frame rate
- H264, full D1, full frame rate
- Resolution and frame rate adjustable
- Two-way AAC audio
- Alarm inputs and relay outputs
- Integration in third party software
- SD Secure Digital Slot
- 80GB Hard Disk, H.264 recording (optional)







CAMERA    
 TARGET (AREA / EVENT)    
 STREAMING VIDEO

## AIDED NAVIGATION

When an operator is monitoring an area with a given camera, the system automatically monitors the best neighbouring area. If the active view changes (PTZ camera) the neighbouring views change accordingly.

## RUSH AT ALARMED LOCATION

When a Video Agent detects an event, it broadcasts a priority message to the other Video Agents and all available units promptly orientate the camera towards the alarmed area.

## SMART VIDEO SEQUENCE

Video Agents cooperate to provide the best video sequence of views, for a given area.

## VERY LOW AMOUNT OF STREAMING TO THE NET

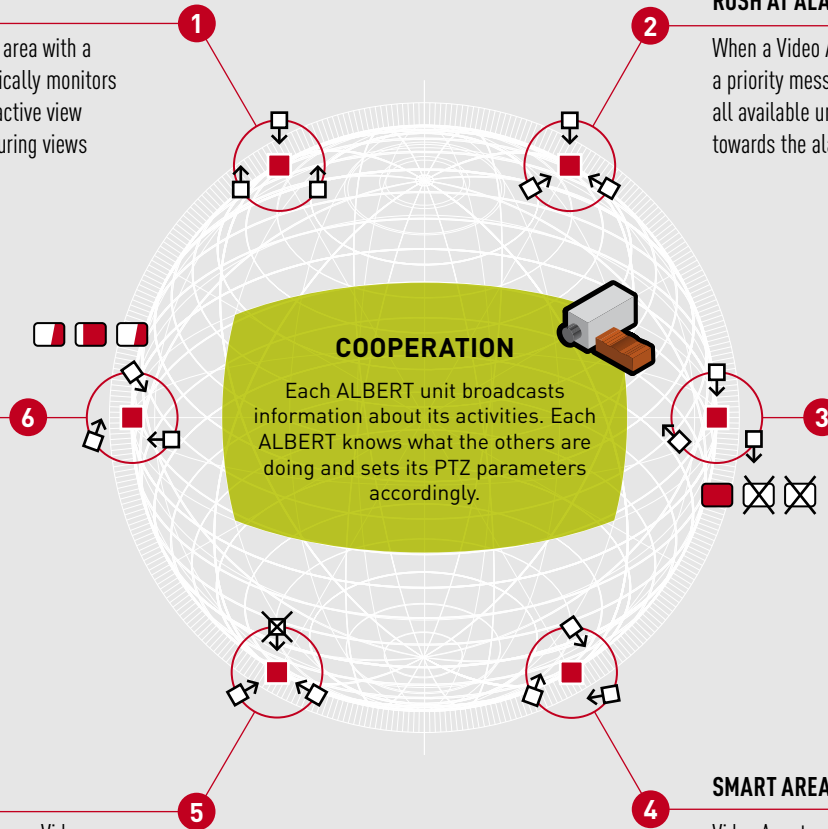
Only alarmed videos can be transmitted.

## ROBUST SYSTEM

In case of someone tampering with one Video Agent, its neighbours can cover the given area until repairs have been made.

## SMART AREAS PATROL

Video Agents cooperate for optimal covering of the areas, reducing overlapping between cameras while patrolling.



## FULL COMPATIBILITY WITH ULISSE POSITIONING UNIT



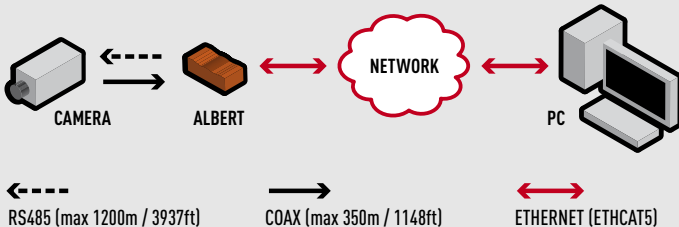
## VIDEO CONTENT ANALYSIS (VCA)

### ADVANCED EVENT DETECTION

ALBERT features an advanced, outdoor-oriented, self-learning event detector. Minimum configuration parameters are needed. The system will automatically adapts parameters to moving trees, rain, sea waves, light changes and shadows.

### BEHAVIOR ANALYSIS

The system is able to detect objects moving across virtual barriers, prohibited directions, forbidden areas, objects left, objects removal, etc.



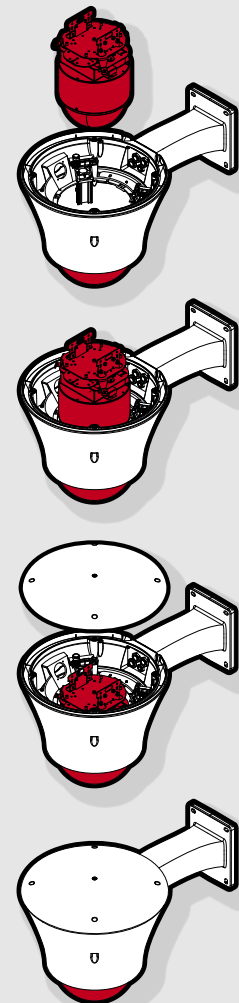


# DISCREET SURVEILLANCE DOMES

## MEDUSA

### DOME ENCLOSURE WITH TOP-MOUNT OPENING SYSTEM

- Patented top-opening system
- Constructed in aluminium with lower hemisphere in acrylic or polycarbonate
- Indoor/Outdoor installation
- Universal internal adapter for speed domes and network PTZ cameras
- Speed domes and network PTZ cameras tested: AXIS, PANASONIC, SONY, JVC, CANON, ACTI, AMERICAN DYNAMICS, SAMSUNG
- Camera power supply equipped with internal adapter
- Version with cooling device
- Protection rating IP66 (not for double filter version)
- Wall, ceiling or parapet application with cable management brackets
- Transparent or smoked lower hemisphere
- Accessories: fan-assisted heater and reinforced heater for low temperatures



### SELECTION GUIDE TO MEDUSA ADAPTORS

CAMERAS VOLTAGE	MAIN POWER SUPPLY 24VAC	MAIN POWER SUPPLY 100-240VAC
12Vdc	ODBH18H210, ODBH18V210, ODBH18C210	ODBH18H110, ODBH18V110, ODBH18C110
24Vac	ODBH18H211, ODBH18V211, ODBH18C211	ODBH18H111, ODBH18V111, ODBH18C111
24Vdc	-	ODBH18H112, ODBH18V112, ODBH18C112
230Vac	-	ODBH18H110, ODBH18V110, ODBH18C110

Videotec discreet surveillance domes allow video monitoring by masking the camera from prying eyes, with only one diaphragm being lost. These housings are particularly suitable for airports, supermarkets, shopping centres. A wide range of accessories for mounting the equipment is available thereby satisfying all installation needs.



WWW.VIDEOTEC.COM

## BRACKETS AND ADAPTORS

### DBH06

#### WALL BRACKET FOR MEDUSA DOME

- Made of aluminium
- Painted with epoxy-polyester powder, RAL 9002
- Designed to take internal cables



### DBH07

#### CEILING/PARAPET BRACKET FOR MEDUSA DOME

- Made of aluminium
- Painted with epoxy-polyester powder, RAL 9002
- Designed to take internal cables



### DBH08

#### LINEAR EXTENSION FOR DBH07

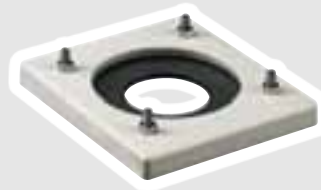
- Made of aluminium
- Painted with epoxy-polyester powder, RAL 9002



### DBH09

#### ROTATING PLATE FOR DBH07

- Made of aluminium and stainless steel



### PTCC1

#### POLE MOUNT ADAPTOR

- Made of aluminium
- Pole diameter 80÷150mm (3.1÷5.9in)
- Suitable for DBH06



### WCWGC

#### CORNER MOUNT ADAPTOR

- Made of aluminium
- Suitable for DBH06



MEDUSA + DBH07 + DBH08

## DBH24K

### DOME ENCLOSURE

- Constructed in plastic with the lower semi-sphere in plexiglas
- IP65
- Mounting of standard cameras or most of the high speed domes available on the market and PTZ network cameras (check the available adapters in the related chart)
- Wall, ceiling or parapet application with cable management brackets
- Accessories: standard white sunshield and selectable lower glass, transparent or smoked
- Optional accessories: fan assisted thermostat heater, camera power supply



DBH24K + DBH04



DBH45 + DBH05

## DBH45

### FULL SPHERE DOME ENCLOSURE

- Black anodised aluminium base and half-sphere in plexyglass
- Diameter 450mm (17.7in)
- Adjustable camera mounting bracket
- Suitable to mount IPTS, IPHS indoor pan & tilt motors
- Wall or ceiling application with cable management brackets
- Accessories available: fan assisted heater kit, camera power supply



DBH45 + DBH04



## **DSBH24**

### **CEILING HALF-SPHERE DOME**

- Black aluminium base and half-sphere in plexyglass
- Diameter 240mm (9.4in)
- Directly fixed to the ceiling or false ceilings
- Adjustable camera mounting bracket



## **DSBH45**

### **CEILING HALF-SPHERE DOME**

- Black anodised aluminium base and half-sphere in plexyglass
- Diameter 450mm (17.7in)
- Directly fixed to the ceiling
- Adjustable camera mounting bracket
- Possibility to mount IPTS, IPHS indoor pan & tilt motors



## **DSBH120**

### **HALF SPHERE DOME FOR FALSE CEILING**

- Diameter 120mm (4.7in)
- For false ceiling installations
- Available in transparent or smoked glass



## BRACKETS AND ADAPTORS

### DBH03

#### CEILING BRACKET FOR DBH24 AND DBH45 DOMES

- Made from metallic tube
- Painted with black epoxy-polyester powder
- Designed to take internal cables
- Length 922mm (36,2in)



### DBH05

#### PARAPET BRACKET FOR DBH24 DOME

- Made from aluminium tube
- Painted with black epoxy-polyester powder paint
- Designed to take internal cables



### DBH04

#### WALL BRACKET FOR DBH24 AND DBH45 DOMES

- Made from metallic tube
- Painted with black epoxy-polyester powder paint
- Designed to take internal cables



### DPTCH1

#### POLE MOUNT ADAPTER

- Made of aluminium
- Pole diameter 80÷150mm (3.1÷5.9in)
- Suitable for DBH04



### DCWGH

#### CORNER MOUNT ADAPTER

- Made of aluminium
- Suitable for DBH04





**DBH24 ADAPTORS**

	MODELS	ADAPTOR FOR DBH24	HEATER 230VAC	HEATER 24VAC	HEATER 12VDC
FIXED CAMERA		ODBH24H000			
		ODBH24H100	•		
		ODBH24H200		•	
AMERICAN DYNAMICS - SENSORMATIC	ULTRA V, ULTRA VI, DELTA DOME II	ODBH24H221		•	
ARECONT VISION	AV8360	ODBH24H155	•		
	AV8360	ODBH24H355			•
AXIS	213, 2130R	ODBH24H144	•		
	213, 2130R	ODBH24H244		•	
	214	ODBH24H151	•		
	214	ODBH24H251		•	
	231, 232	ODBH24H149	•		
	231, 232	ODBH24H249B		•	
CANON	VB-C50IR	ODBH24H144	•		
	VB-C50IR	ODBH24H244		•	
GANZ	ZC-S122P, ZC-S123P	ODBH24H141	•		
	ZC-S122P, ZC-S123P	ODBH24H241		•	
GRANDEYE	HALOCAM	ODBH24H153	•		
	HALOCAM	ODBH24H353			•
JVC	TK-C676, VN-C655	ODBH24PS23 (with power supply)	•		
	TK-C676, VN-C655	ODBH24H223		•	
	V NET VN-C30U	ODBH24H138	•		
	V NET VN-C30U	ODBH24H238		•	
PANASONIC	WV-CS320, WV-CS570, WV-CS850, WV-NS320	ODBH24H121	•		
	WV-CS320, WV-CS570, WV-CS850, WV-NS320	ODBH24H221		•	
	WV-CS950	ODBH24H149	•		
	WV-CS954	ODBH24H249B		•	
	BB-HCM381, BB-HCE481	ODBH24H150	•		
	NS-202	ODBH24H154	•		
	NS-202	ODBH24H254		•	
NS-202	ODBH24H354			•	
SAMSUNG TECHWIN SPD	SPD-1600P	ODBH24H132	•		
	SPD-1600P	ODBH24H232		•	
SAMSUNG ELECTRONICS	SCC-643P	ODBH24H136	•		
	SCC-643P	ODBH24H236		•	
SANYO	9300P, 9400P	ODBH24H141	•		
	9300P, 9400P	ODBH24H241		•	
SONY	SNC-RZ30P, EVI-D70P/W	ODBH24H142	•		
	SNC-RZ30P, EVI-D70P/W	ODBH24H242		•	
	SNC-RZ25P, SNC-RZ50P	ODBH24H248B		•	
TOSHIBA	IK-WB21A, IK-WB21E	ODBH24H152	•		
	IK-WB21A, IK-WB21E	ODBH24H252		•	



# VIDEO SWITCHING

## SR4C

### 4 INPUTS DVR

- Possibility of selecting PAL/NTSC
- 4 video inputs
- 1 monitor output
- 4 alarm inputs with possibility of NC or NO configuration
- Image display in quad or single format
- Optional hard disk



## SM42B - SM82B

### SMALL VIDEO MATRIX

- 4 video inputs expandable up to 8 through additional board
- 2 independent video outputs with text generator
- 4 (8) alarm inputs, one output contact, trigger VCR and alarm reset
- 15 keys local keypad
- 2 RS485 serial inputs for max 2 remote keyboards
- Telemetry over the coax on the 4 (8) video inputs and on auxiliary serial output (RS485)
- Privacy video-masking function
- Camera exclusion feature if the monitor is used in public places
- On Screen Menu for parameters setup



## SM84B - SM164B

### VIDEO MATRIX

- 8 video inputs expandable up to 16 through additional board
- 4 independent video outputs with text generator
- 8 (16) alarm inputs, one output contact, trigger VCR and alarm reset
- 4 RS485 serial inputs for max 4 remote keyboards
- Telemetry over the coax on the 8 (16) video inputs and on auxiliary serial output (RS485)
- Privacy video-masking function
- Camera exclusion feature if the monitor is used in public places
- Controllable by PC (RS232)
- On Screen Menu for parameters setup





The electronic range comprises a complete series of products for the management of a wide range of CCTV systems. From simple sequential switchers to quad compressors, from small matrix devices directly or remote controlled through keyboard, to matrix units ideal for mid-size installation, the range is complete and versatile.



## SM328B

### SYSTEM VIDEO MATRIX

- 32 video inputs (composite PAL/NTSC 1Vpp) with video loss detection
- 8 video outputs (composite PAL/NTSC 1Vpp) with OSD character (free text, date and time)
- Privacy video masking function
- On Screen Menu configuration and PC enhanced configuration
- 32 alarm inputs, 8 relay outputs, 1 buzzer
- Day/night sequences (32-step each) for each monitor
- 4 RS485 keyboard inputs RJ11 connectors (max 8 keyboards)
- 2 Aux RS485 lines output to control telemetry and other third parties devices
- Aux A can be used to connect more SM328B matrixes in Master/Slaves or Parallel systems
- VCR Trigger input to connect a time laps VCR
- On alarm: actions on monitors (sequences and cameras) and on telemetry (scan on home positions or patrol)
- Camera exclusion feature if the monitor is used in public places

## SW41SK - SW81SK

### COST EFFECTIVE, DESKTOP SEQUENTIAL SWITCHER

- 4/8 inputs, 1 output
- Inputs selection to display performed manually or automatically
- Active input signalled by LED
- Skip function allows the exclusion of the non-connected inputs from the sequence
- Automatic scanning time adjustable from 0.5 to 30 sec



## DCTEL

### MATRIX AND TELEMETRY CONTROL KEYBOARD

- Suitable for SM42B-82B, SM84B-164B matrix and telemetry receivers
- Control of video switching, sequences and alarm reset
- Normally fed by SM42B-82B, SM84B-164B matrix
- 2 outputs for RS485 serial communication [1 for matrix control, 1 for telemetry independent control]
- Telemetry control through matrix or directly by RS485 dedicated serial output: P&T, autopan, preset, zoom, focus, iris and AUX
- Pelco "D" and Eneo Protocols support



## DCBD

### MATRIX CONTROL KEYBOARD

- Suitable for SM42B-82B, SM84B-164B matrix
- Control of video switching, sequences and alarm reset
- Normally fed by SM42B-82B, SM84B-16A matrix
- RS485 serial communication



## DCIR

### INFRARED REMOTE CONTROL WITH BASE UNIT

- For matrix series SM42B-82B, SM84B-164B and telemetry receiver
- Infrared receiver situated in the base of the remote control
- Control of video switching, sequences and alarm reset
- Normally fed by SM42B-82B, SM84B-164B matrix
- Telemetry control through matrix and directly by the RS485 serial output: P&T, autopan, preset, patrol, zoom, focus, iris and AUX



The range of control keyboards is designed to offer the best solution for small to large systems. Built in shock and thermo resistant materials, with rubber keys, the range offers the right keyboard for the right application. The range allows the possibility to control a wide range of switching devices and the most common high speed domes, in an ergonomic and pleasant design. Distance between devices up to 1200m (3937ft) and serial communications in RS485.



## DCJ

### VIDEO AND TELEMETRY CONTROL KEYBOARD

- Control of matrix SM42B-82B, SM84B-164B and SM328B
- Three axis proportional joystick
- Communications:
  - Three RS485 serial communication lines: one towards video matrix and the other two to control two independent telemetry channels
  - RS232 serial communication towards PC for firmware update
- Direct control or through matrix series SM and third parties products
- Up to 9999 video channels, 999 telemetry receivers on each telemetry line and 99 monitors



## DCK

### VIDEO CONTROL KEYBOARD

- Control of matrix SM42B-82B, SM84B-164B and SM328B
- Communications:
  - RS485 serial communication towards video matrix
  - RS232 serial communication towards PC for firmware update
- Direct control or through matrix series SM of Videotec and third parties products
- Up to 9999 video channels, 99 monitors



## VIDEO SWITCHING MANAGEMENT

	SM42B	SM82B	SM84B	SM164B	SM328B
Max video inputs	4	8	8	16	32
Max video outputs	2	2	4	4	8
Max operators	2 (+ 1 locally)	2 (+ 1 locally)	4	4	8
Max alarms	4	8	8	16	32
Telemetry	RS485 / Coax	RS485 / Coax	RS485 / Coax	RS485 / Coax	RS485

## KEYBOARDS

DCTEL / DCIR	•	•	•	•	
DCBD	•	•	•	•	
DCJ / DCT	•	•	•	•	•
DCK	•	•	•	•	•

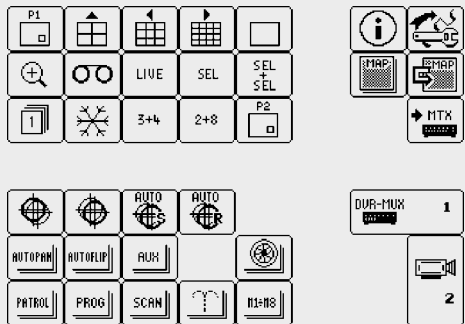
## DCT

### VIDEO AND TELEMETRY VIRTUAL CONTROL KEYBOARD

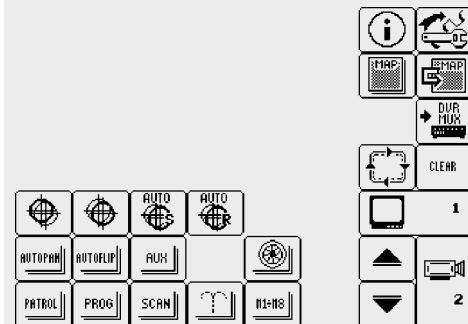
- Graphic Display: 320x240 pixels, touch screen back-lit
- Control of all Videotec video matrixes
- Three axis joystick
- Virtual keyboard touchscreen
- Communications:
  - RS485 serial communication towards video matrix and multiplexer
  - Two RS485 independent telemetry lines
  - RS232 serial communication towards PC for software configuration upload and firmware update
- Possibility to customize up to 30 maps and customize 40 virtual keys (macrocommand) to any map
- 6 languages menu with expansion possibility up to 12 (management by the programmer)
- Up to 9999 video channels, 999 telemetry receivers on each telemetry line and 99 monitors
- Configurable alarm or communication fault buzzer
- Direct control or through matrix series SM of Videotec and third parties products

Free device

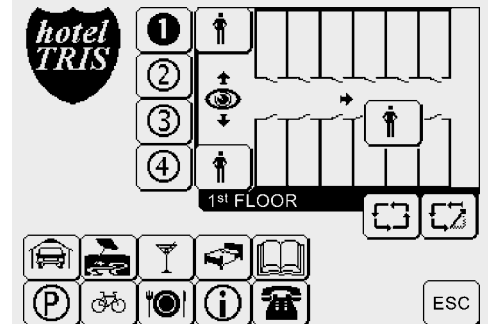
The keyboard allows the control of multiplexers, DVR, PC or other devices through the implementation of the propriator Macro Protocol. The graphic user interface and the control keys can be freely associated by the user/installer. The total number of commands is 128; in the main layout up to 30 command keys can be freely handled.



EXAMPLE OF SCREEN LAYOUT FOR MULTIPLEXER/  
DVR AND TELEMETRY CONTROL



EXAMPLE OF SCREEN LAYOUT FOR MATRIX  
AND TELEMETRY CONTROL



EXAMPLE OF SCREEN LAYOUT OF GRAPHICAL USER MAP



## COMPATIBLE PROTOCOLS

PRODUCTS	PROTOCOLS	KEYBOARDS			MATRIX *
		DCT	DCJ	DCK	SM328B
<b>MULTIPLEXER</b>	ADEMCO	•	•	•	
	HITRON		•	•	•
	SANYO	•	•	•	
	SONY	•	•	•	
<b>DVR</b>	EL.MO.		•	•	
	ENEO	•			•
	EVERFOCUS		•	•	
	SAMSUNG	•			
	SANYO	•			
	SONY	•	•	•	
<b>DOME</b>	BOSCH	•	HW INTFC**		
	ELBEX	•	•		
	EL.MO.	•	•		
	ERNITEC	•	•		
	HITRON	•	•		•
	JVC	•	•		
	KALATEL	•	•		
	MARK&MERCER	•			
	PANASONIC	•	•		
	PELCO	•	•		•
	SAMSUNG	•	•		
	SANYO	•			
	SANTEC	•	•		•
	SENSORMATIC	•	•		
	STAR		•		
	VCL	•	•		
<b>Telemetry Receiver</b>	ENEO	•	•		•

\* Meaning control by DCT, DCJ and DCK keyboards through serial port RS485 of matrix SM series. Because DCK, DCJ and DCT may be interfaced with equipment not manufactured by Videotec, the possibility exists that the interface protocols have changed or are in a different configuration from earlier tested units from us. Videotec recommends a bench test prior to installation. Videotec will not be liable for any installation costs or lost revenues in the event a compatibility problem will occur.

\*\* HW INTFC Hardware Interface needed: RS485/RS232 adapter RS232/BIPHASE converter (Bosch mod.LTC8786).

## DTRX3

### TELEMETRY RECEIVER, 17 FUNCTIONS

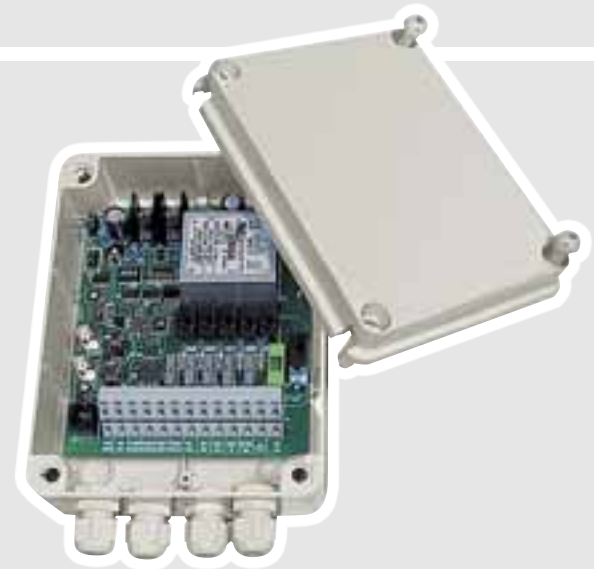
- 11 standard functions for the control of P & T motors and zoom lenses, 6 functions for auxiliary services telemetry data (2x dry contacts, 1x 12Vdc, 1x 24Vac, wiper and washer)
- Maintenance of configuration even in case of power loss
- Up to 40 presets
- 4 alarm inputs, (prepositioning in case of alarm)
- Preset Autotest functions
- Selection of the pan & tilt power supply (24Vac or 230Vac) and camera (12Vdc or 24Vac)
- RS232, Current Loop, RS485 or over the Coax (with optional card DTCOAX) selectable communication
- Available version 24Vac (DTRX324)



## DTMRX2

### TELEMETRY RECEIVER, 12 FUNCTIONS

- 11 standard functions for the control of pan & tilt motors and zoom lenses, 1 function for the control of one auxiliary service (dry contact)
- Aux can be used for wiper operation
- RS232, RS485 and over Coax (through SM42B-82B and SM84B-164B matrix) selectable communication
- Operating temperature: -20°C + 50°C (-4°F up to 122°F)
- RS232, RS485 repeater for daisy chain configuration



## DTCOAX

### OVER THE COAX BOARD FOR DTRX3 RECEIVER

- Easy installation on DTRX3 receiver
- Over the coax data receiving through SM42B-82B and SM84B-164B
- Max distance from matrix: 350m (1100ft)



## MICRODEC485

### TELEMETRY DATA MINI RECEIVER, 8 FUNCTIONS

- 8 functions (Pan, Tilt, Zoom and Focus)
- Possibility to mount inside HEG, HEB camera housings
- Control of a 24Vac pan & tilt motor and of zoom/focus functions of a 12Vdc polarity inversion zoom lens
- RS485 serial communication
- Max 32 addressable receivers
- Power supply: 24Vac, 50/60Hz



The telemetry receivers range includes products with minimum features up to the most complete which satisfy any installation requirement. The digital receivers allow the control of P&T and motorized zoom lenses up to 1200m (3937ft) distance, by a twisted pair cable. In case of using the DTRX3 receiver with the DTCOAX optional card and DTMRX2, a coax cable, which is used for the video signal, can be used for data transmission together with Videotec matrix.



## DTRXDC

### TELEMETRY DATA RECEIVER, 13 FUNCTIONS

- For remote control of variable speed pan & tilt motor PTH355P and zoom lenses
- 13 functions (auxiliary functions 2xdry contacts)
- 14 presets
- Up to 7 selectable speeds for autopan
- RS232 and RS485 selectable communication



## DCRE485

### SERIAL DATA DISTRIBUTOR

- 1 input, 8 serial outputs in RS485
- Serial data back on eight outputs at the same time
- Max connection distance 1200m (3937ft)



## DTWRX

### TELEMETRY RECEIVER FOR WIPER AND WASHER REMOTE CONTROL OF STAND-ALONE HOUSINGS

- Control of wiper and water pump of UPTWAS- series
- RS485 communication
- Remote controllable up to 1200m (3937ft) from the control keyboard
- Easy installation



## TELEMETRY

	DCTEL	DCIR	DCJ	DCT	
Max receivers	16	16	999*	999*	* On each telemetry line
Autopan / Preset	•	•	•	•	
Patrol		•	•	•	
TELEMETRY RECEIVERS					P&T'S
ULISSE	•	•	•	•	ULISSE
DTRXDC			•	•	PTH355P
DTRX3	•	•	•	•	PTH300P, PTH900P, NXPTH200
DTMRX2	•	•	•	•	PTH310, PTH910, NXPTH210, IPT/H720
DTMRX24 / MICRODEC485	•	•	•	•	PTH311, PTH911, NXPTH211, IPT/H721

## TWLP1

### PASSIVE TWISTED-PAIR VIDEO TRANSCEIVER

- Video, power supply and telemetry in one cat.5 cable
- Transmission of B/W or color video signal
- Dimensions (connector and BNC cable not included): 22x47x32mm (0.87x1.85x1.26in)
- Maximum distance to the active receiver: up to 750m (2461ft) with UTP cat.5 cable



## TWP

### PASSIVE TWISTED-PAIR VIDEO TRANSCEIVER

- Transmission of B/W or color video signal
- Dimensions with BNC (connector not included): 40x25x63mm (1.57x0.98x2.5in)
- Maximum distance to the active receiver: up to 750m (2461ft) with UTP cat.5 cable



## TWT1

### OUTDOOR TWISTED PAIR VIDEO TRANSMITTER

- Transmission of B/W or color video signal
- Small IP56 weatherproof box
- Maximum distance to the receiver: up to 1500m (4900ft) for colour video signal, up to 2000m (6900ft) for B/W with UTP cat.5 cable
- Protected from ground loops and over voltage
- Available version 230Vac (mod. TWT1A)



## TWM1

### SMALL TWISTED-PAIR VIDEO TRANSMITTER

- Transmission of B/W or color video signal
- Dimensions with BNC (connector not included): 40x25x63mm (1.57x0.98x2.5in)
- Protected from ground loops and over voltage
- Maximum distance to the receiver: up to 1500m (4900ft) for colour video signal, up to 2000m (6900ft) for B/W with UTP cat.5 cable





The twisted pair video transmitter/receiver system is an interesting solution for all those installations where the distance that the video signal must cover via cable is very long. This is the right alternative to fiber optic systems for distances below 1500m (4900ft). The receiver is available with weatherproof box or Euro-card. Video distribution amplifiers are available in different models at customer's choice, for every installation requirement.



## TWRB1

### OUTDOOR TWISTED-PAIR VIDEO RECEIVER

- Reception of B/W or color video signal
- Small IP56 weatherproof box
- Maximum distance to the transmitter: up to 1500m (4900ft) for colour video signal, up to 2000 m (6900ft) for B/W with UTP cat.5 cable
- Protected from ground loops and over voltage
- Available version 230Vac (mod. TWRB1A)



## TWRC1

### RACK BOX FOR TWRR1 CARDS

- Up to max 14 TWRR1
- 19" rack, 3HE
- Power supply included
- 13-place rack case with closing plates for unused places



## TWRR1

### TWISTED-PAIR RACK VERSION VIDEO RECEIVER

- Europe standard board
- Same technical feature of the TWRB1
- Maximum distance to the transmitter: up to 1500m (4900ft) for colour video signal, up to 2000 m (6900ft) for B/W with UTP cat.5 cable
- Protected from ground loops and over voltage



## VD

### VIDEO SIGNAL DISTRIBUTOR AMPLIFIER

- Available in the versions with 1, 4, 8 inputs and 8, 16 outputs
- For color or B/W video signals
- The input signal is amplified and distributed to the available outputs
- By means of VD816PR1 and VD48P1 versions, it is possible to select how many outputs can be associated to a video input





# INFRARED ILLUMINATORS

## IRBD

### INFRARED LED ILLUMINATORS

- Robust aluminium construction anodised white, with black acrylic front fascia
- IP67
- 18 high efficiency LED array with current limited integral power circuit
- Beam patterns: 10°, 20°, 60°
- Infrared beam wavelength: 850nm



### BEAM PATTERNS AND ACHIEVABLE DISTANCE

MODEL	BEAM PATTERNS	WAVELENGTH	DISTANCE *	
			m	ft
IR10BD	10°	850	220	722
IR20BD	20°	850	150	492
IR60BD	60°	850	70	230

\* Achievable distance with CCD 1/2" B/W high sensitive cameras for night vision, ratio S/N greater than 20dB and minimum F1.4 lens aperture. The typical distance of the subject to illuminate is in function of the reflection coefficient of the illuminated scene.

### ULISSE IR



The infrared illuminators are essential for night vision together with black/white cameras or colour cameras with a Day/Night function. The IR have been designed to increase the duration of the lamps and to reduce the need for maintenance. For this reason, particular attention has been paid to optimising heat dissipation which, due to the casings progressive finning design is at a maximum near the lamp filament. The IRBD series of LED infrared illuminators offers the latest intelligent technology, long life and low power consumption offering best performance in night vision surveillance.



## IR50, 230VAC

### INDOOR/OUTDOOR INFRARED ILLUMINATOR

- Made of die-casted aluminium
- Painted black epoxy polyester powder
- IP66
- 850nm infrared filter
- Power supply: 230Vac
- Consumption: 50W
- Lamp standard bayonet mount



## IR50, 12VAC

### INDOOR/OUTDOOR INFRARED ILLUMINATOR

- Made of die-casted aluminium
- Painted with black epoxy-polyester powder
- IP66
- 850nm infrared filter
- Power supply: 12Vac/dc
- Consumption: 50W
- Available lamps with different angle beams
- Lamp standard mounting



## IR300, 230VAC

### INDOOR/OUTDOOR INFRARED ILLUMINATOR

- Made of casted aluminium
- Painted black epoxy polyester powder
- IP65
- 850nm infrared filter
- Power supply: 230Vac
- Consumption: 300W
- Lamps with different light beams are available



### INFRARED ILLUMINATORS FEATURES

MODEL	POWER SUPPLY	HORIZONTAL BEAM	VERTICAL BEAM	DISTANCE *	
				m	ft
	Vac	°	°		
IR50 spot	12	10°	10°	20	65
IR50 flood	12	40°	40°	16	52
IR50 wide	12	60°	60°	12	39
IR50 flood	230	40°	40°	16	52
IR300 spot	230	10°	8°	65	213
IR300 flood	230	23°	10°	50	164
IR300 wide	230	40°	20°	35	114

\* The typical distance of the subject to illuminate is in function of the reflection coefficient of the illuminated scene.

## ACCESSORIES

### IRBA

BRACKET FOR MOUNTING OF TWO INFRARED ILLUMINATORS IR50 ON HOUSINGS

- Made of die-casted aluminium
- Painted with epoxy polyester powder RAL9002



HEG + IRBA + 2 IR50

### OHPVIRA

ADAPTER FOR MOUNTING ONE IR50 INFRARED ILLUMINATOR ON THE VERSO, VERSO COMPACT AND HOV32 HOUSINGS



VERSO + OHPVIRA + IR50

### OIRCR

NIGHT SWITCH FOR INFRARED ILLUMINATORS

- Power supply: 230Vac, 50/60Hz



### IRPS12

POWER SUPPLY FOR 12VAC ILLUMINATORS

- Power supply: 230Vac/12Vac, 75VA



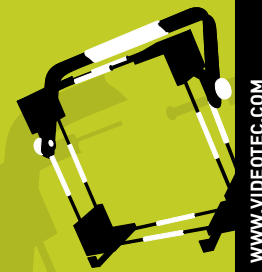
### IRPSBD

POWER SUPPLY AND CONTROL FOR IRBD ILLUMINATORS IN WEATHERPROOF BOX

- Available in 24Vac (IRPSBD24); 120Vac (IRPSBD120) and 230Vac (IRPSBD230)
- IP66



# MONITOR MOUNTS



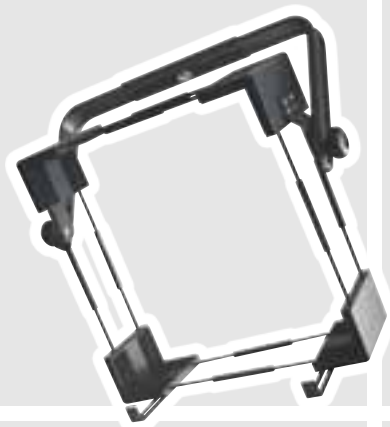
WWW.VIDEOTEC.COM

Videotec mounts have been designed to support firmly the weight of monitors, conferring at the same time a nice and modern aspect to the whole. Entirely made of aluminium painted with epoxy polyester powder, they offer a wide range of adjustments so that they can be adapted to monitors with the most various shape. They consist of modular elements, which are the same for all mounts, such as for example the mounting accessories. The mounting system with tie-rods and corner adapters covered with rubber prevents the monitor from being damaged.

## MID3 - MID4

### DOUBLE TIE ROD MOUNT

- Made by modular aluminium
- MID3 for 14"÷21" monitors:  
min. 367x367mm (14.3x14.4in),  
max 532x532mm (20.9x20.9in)
- MID4 for 21"÷28" monitors:  
min. 510x510mm, (20x20in),  
max 675x675mm, (26.5x26.5in)
- Rubber monitor protection
- Wall mount MWM4
- Ceiling mount MCMB, with  
available extension WCMPB



## MIS1 - MIS2

### SINGLE TIE ROD MOUNT

- Made by modular aluminium elements
- MIS1 for 9"÷12" monitors:  
min. 212x212mm (8.3x8.3in),  
max 325x325mm, (12.7x12.7in)
- MIS2 12"÷14" monitors:  
min. 275x275mm (10.8x10.8in),  
max 377x377mm (14.8x14.8in)
- Rubber monitor protection
- Ceiling mount MCMB, with  
available extension WCMPB
- Wall mount MWM1



## MCMB

### CEILING MOUNT BRACKET

- Made by aluminium tube painted
- Suitable for MIS1 and MID1 models
- Length: 750mm (29.5in)



## MWM1 - MWM4

### WALL MOUNT BRACKET

- Made by aluminium tube
- Suitable for MIS1 and MID1 models



## MHSW1

### WALL MONITOR SUPPORT

- Made by aluminium tube and steel tray
- Suitable for 9"-12"-14" monitors



## WCMPB

### EXTENSION MODULE FOR MCMB BRACKET

- Made by aluminium tube
- Length: 500mm (19.6in)





[www.videotec.com](http://www.videotec.com)

PRINTED IN ITALY © 2008 VIDEOTEC S.P.A.

Videotec Marketing / Graphic Dept.



**HEADQUARTERS ITALY**  
**VIDEOTEC S.p.A.**

Via Friuli, 6  
I-36015 Schio (VI) Italy

Tel. +39 0445 697411  
Fax +39 0445 697414

info@videotec.com  
www.videotec.com

**FRANCE**  
**VIDEOTEC FRANCE S.A.R.L.**

Voie du Futur - Zac des Portes  
27100 Val de Reuil, France

Tel. +33 2 32094900  
Fax +33 2 32094901

info@videotec-france.com  
www.videotec.com

**UK / IRELAND**  
**VIDEOTEC UK SALES**

*Sales:*  
Tel. / Fax +44 01353 775438

*Technical support:*  
Tel. +44 0113 815 0047

*Orders / shipping dept.:*  
Tel. +44 0113 815 0031

uksales@videotec.com  
www.videotec.com

**U.S.A. / CANADA**  
**VIDEOTEC SECURITY, Inc.**

The Lower level South Suite  
The Ottilio Office Complex I  
555 Preakness Ave.  
Totowa, NJ 07512 - U.S.A.

Tel. +1 973 5950788  
Fax +1 425 6484289

usasales@videotec.com  
www.videotec.com

**ASIA PACIFIC**  
**VIDEOTEC (HK) Ltd**

Unit C 24 Floor  
Gold King Industrial Building  
35-41, Tai Lin Pai Road  
Kwai Chung, NT, Hong Kong

Tel. +852 2333 0601  
Fax +852 2311 0026

info@videotec.com.hk  
www.videotec.com