

Exceeding Every Expectation..



SVR-1650E/1640E/950E

imagine Premium Security

The age of premium security has arrived. Samsung Techwin is introducing a DVR that has it all ; an unbeatable performance and stability that screams out loud with creativity, such that only the right combination of tomorrow's philosophy and technology can produce. Experience what a truly safe and trustworthy security product can provide, experience the SVR-1650E/1640E/950E.

SAMSUNG TECHWIN

SAMSUNG

Speed, performance, ease of use,
and terrific design
The ONE that has it all...



The SVR-1650E/1640E/950E is a 16/9 channel stand-alone DVR showcasing state-of-the-art digital image processing technology. The MPEG-4 compression technology was used to build the SVR-1650E/1640E/950E to give it a capability to record video at 480fps/120fps (NTSC). The SVR-1650E/1640E/950E's high performance image processing unit stabilizes network transmissions and improves network speed to an incomparable level. You can configure up to 4 internal HDD for 704 x 480, crystal clear, high resolution image data storage. And the units can be expanded upto 8TB of external storages with multiple connection of SVS-5, a powerful HDD extension unit ensuring a high capacity of data storage system. The standard DVD+RW, together with a USB memory stick, provides convenient ways to back-up large data. The SVR-1650E/1640E/950E is controlled by a mouse, something you are already familiar with. Together with the user friendly GUI, controlling the SVR-1650E/1640E/950E couldn't be easier. It also comes with standard multi-protocol for easy networking with other peripherals. All the premium functions are included in the SVR-1650E/1640E/950E to give you the highest level of security, and its luxurious design will upgrade the elegance of your video surveillance system.

Luxury & Stylish

SVR - 1650E/1640E/950E



Design

Hand polished look in mirror finish black

The SVR-1650E/1640E/950E has a feature of hand polished look in mirror finish black to reinforce trust and class, and the finely detailed aluminum body adds solidity to this security product.



Logical control button and jog-dial location

For user convenience, all the function buttons are logically placed, and the jog-dial located on the front center is for simple but effective image searches. Checking operational status of different functions is as easy as looking at sky-blue, white, or red LED lights.





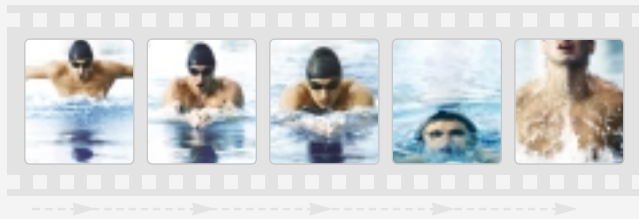
High Quality Picture...

Image Capability



High performance recording using MPEG-4 technology

The latest MPEG-4 compression method supported by the SVR-1650E/1640E/950E processes 480fps live displaying and 480fps/120fps high quality video recording, and its superior capability allows it not to lose even a single image.



Supports high resolution image

The SVR-1650E/1640E/950E supports 704 x 480 and other various high resolution images making monitoring of DVD-like high-definition images under any environment possible.



Conventional DVR

SVR-1650E/1640E/950E



Multiple recording settings

The SVR-1650E/1640E/950E can be set for general, event, and / or scheduled recording simultaneously, so it is ready to handle any operating environment. Additionally, the image quality can be set to four different levels for more effective control of recording quality.



General / Event recording

Scheduled recording

Ease & Convenience...



Ease of Use



Various controllers including mouse, remote control and system controller

The SVR-1650E/1640E/950E comes with an infrared wireless remote control, and offers simple GUI and a mouse for experienced PC users. The graphic menu of the SVR-1650E/1640E/950E has Hot Function icons to aid mouse users and to provide a better working environment. Additionally, a system controller (SCC-3100A) can be used to control PTZ dome cameras connected to a DVR plus multiple DVRs simultaneously, providing an easy and convenient user environment only a stand-alone product can provide.



Hot Function icons



Easy-to-use and convenient GUI

Pop-up style menu and GUI makes learning how to operate the SVR-1650E/1640E/950E very easy, even for a digital equipment novice.

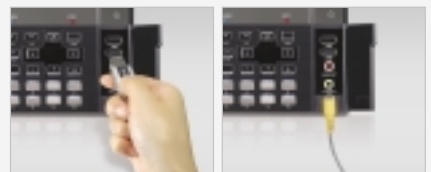


Quick Setup Screen Setup Record Setup Event Setup Communication System Setup Search Copy Exit



Front USB port and AV output port

2 front USB ports are very accessible for connecting mouse or back-up devices like DVD+RW or USB memory sticks. Video / Audio ports are also located on the front so connecting cables-for system expansion or for connecting other peripherals- is very easy.



USB memory stick connecting Video / Audio ports connecting



Network



Optimal network speed

The SVR-1650E/1640E/950E recognizes line status automatically and configures the optimal network according to its environment.



Stable network speed

Image processing chip for networking was used in the SVR-1650E/1640E/950E to prevent interference from the main system's surveillance, record, play, and other settings during data transmissions. Therefore, it performs at its best and transmits data at a maximum speed of 480fps under any circumstance. (SVR-1650E)



16 Channel Display



Supports Centralized Management Software for both DVRs and Network Products

The Samsung Techwin's exclusive 'Network Manager', a standard application software provided, can manage not only the SVR-1650E/1640E/950E but a range of network products (*iPOLiS*) simultaneously. It allows easy yet systemized operation of a variety of DVR and ipolis products' functions enabling the monitoring more reliable, faster and more efficient.

- Live monitoring, playback and simple recording procedures
- 16 Split screen(1/4/9/16), Max. 80 channel recording
- MPEG-4 / JPEG compression and Bi-directional audio transmission
- Easy remote control of PTZ cameras
- Unlimited registration of units to 'Network Manager'



Network Manager



Scalability



Large data back up using DVD+RW

Since the SVR-1650E/1640E/950E is a premium DVR, it comes with a DVD+RW to support high capacity, high resolution record data back ups. The front USB port can also be used for easy data back-up to a USB memory stick.



Built-in 250GB HDD, expandable up to 2TB

The SVR-1650E/1640E/950E comes equipped with large 250GB internal HDD (SVR-950E : 160GB) and supports up to four internal HDD making it ideal for long-term data storage. (Up to 2TB with 4 x 500GB HDD)



High capacity storage system using HDD extension unit (Max. 10TB of Total Storage)

SVR-1650E/1640E/950E can be equipped with sixteen optional HDDs at maximum using SVS-5, HDD extension unit. Each SVS-5 supports four internal HDDs and allows the extra storage of up to 8TB. (Internal : Max. 2TB, 4 x 500GB, External : Max. 8TB, 16 x 500GB)

* SVS-5S : Standard extension model (Including SATA Board)

* SVS-5E : Additional extension model (Not including SATA Board)



SVS-5 HDD Extension Unit



Supports scalability of DVR/PTZ Dome using system controller

With the system controller SCC-3100A, up to 255 DVR and PTZ dome cameras can be controlled. The SVR-1650E/1640E/950E provides multi-protocol to support connecting and controlling a variety of peripherals which makes it easy to build medium to large security systems.



SCC-3100A



Supports text recording of ATM/POS transaction

The SVR-1650E/1640E/950E can process text inputs and save, replay, or display them on a monitor. These capabilities are ideal for networking with POS or ATM systems in financial institutes or retail businesses.



ATM/POS



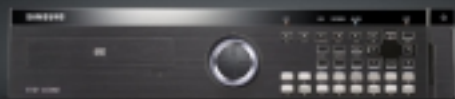
Audio port : 4 in / 2 out, Sensor port : 16 in / 4 out

The SVR-1650E/1640E/950E supports 4-channel audio input line, and the inputted audio data can be saved simultaneously with the video data and is searchable. Multiple system configurations can be built by using the SVR-1650E/1640E/950E's 16 channel (SVR-950E : 9 channel) sensor input and 4-channel relay output.



Premium 16/9 Channel Stand-Alone Digital Video Recorder

SVR-1650E/1640E/950E

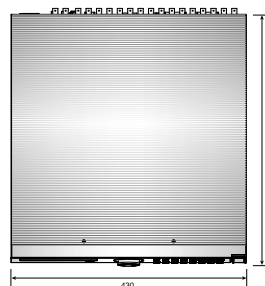
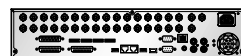


Specifications

Mode	SVR-1650E	SVR-1640E	SVR-950E
Power Source	100-240V AC, 50/60Hz		
Power Consumption	Max. 75W (1 HDD)		
Video Input	16 Channels		9 Channels
Video Output	Monitor A	2 BNC, RCA, VGA	
	Monitor B	1 BNC (Single / Multi)	
Compression	MPEG-4		
Display	Speed	480fps / 400fps (PAL)	
	Resolution	704 x 480 / 704 x 576 (PAL)	
	Multi Screen	1 / 4 / 9 / 16	
Recording	Speed / Resolution	120fps / 704 x 480, 100fps / 704 x 576 (PAL) 240fps / 704 x 240, 200fps / 704 x 288 (PAL) 480fps / 352 x 240, 400fps / 352 x 288 (PAL)	
		30fps / 704 x 480, 25fps / 704 x 576 (PAL) 60fps / 704 x 240, 50fps / 704 x 288 (PAL) 120fps / 352 x 240, 100fps / 352 x 288 (PAL)	
	Mode	Manual + Event, Schedule + Event	
HDD	Standard Installed	250GB 1HDD (Max. 4HDDs) / 160GB 1HDD (Max. 4HDDs)	
	Expand (Option)	HDD extension unit (SVS-5) : Max. 8TB, 16HDDs * SVS-5S : SVS-5 HDD extension unit with a SATA board / SVS-5E : SVS-5 HDD extension unit only	
Back up / Copy	DVD+RW, 3 USB (2 Front)		
Serial Interface	RS-232C, RS-485/422 (RJ-45)		
Sensor Input / Relay Output	16 / 4		9 / 4
Audio	Input / Output	4 / 2 (1 Front)	
Network	Interface	RCA jack	
	Protocol	TCP/IP, DHCP, SMTP	
	Software	Network viewer	
Control	Transport Speed	Max. 480fps / 400fps (PAL) / Max. 120fps / 100fps (PAL)	
		Mouse, Remote control (Controllable up to 16 DVRs), System controller (SCC-3100A) GUI, Multi-language, Hot function	
OSD (On Screen Display)		Screen SMS : ATM/POS support, Password : 2 level (Admin, User)	
		Image quality adjustment : 4 level (Super, High, Middle, Low) support	
Temperature	Operation	5°C ~ 40°C	
Range	Storage	-10°C ~ 60°C	
Dimensions		430(W) x 88(H) x 465(D)mm	
Weight		8.9Kg (1 HDD)	

Dimensions

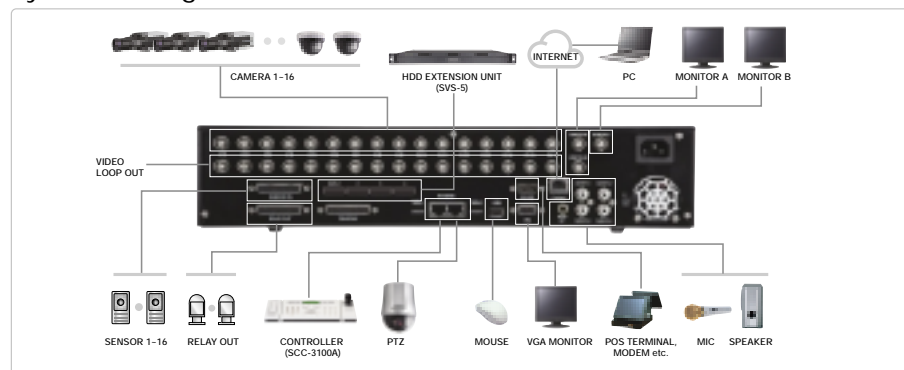
Unit : mm



SVR-1650E/1640E

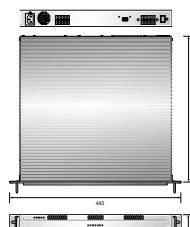
SVR-950E

System Configuration



Accessories

HDD Extension Unit SVS-5



The Eco mark represents Samsung Techwin's will to create environment-friendly products, and indicates that the product satisfies the EU RoHS Directive.

Design and specifications are subject to change without notice.



SAMSUNG TECHWIN CO., LTD.
333-1, Sangdaewon 1-dong, Jungwon-gu,
Seongnam-si, Gyeonggi-do Korea 462-807
Tel : +82-31-730-8931-3 Fax : +82-31-730-8950
www.samsungcctv.com

SAMSUNG OPTO-ELECTRONICS UK, LTD.
Samsung House, 1000 Hillwood Drive,
Hillwood Business Park Chertsey, Surrey KT16 0PS
Tel : +44-1932-45-5308 Fax : +44-1932-45-5325

TIANJIN SAMSUNG OPTO-ELECTRONICS CO., LTD.
7 Pingchang Rd., Nankai Dist. Tianjin 300190, P.R. China
Tel : +86-22-2761-4724(33822) Fax : +86-22-2761-6514

DISTRIBUTED BY

