

High Performance DVR of Choice



16-CHANNEL PC BASE DIGITAL VIDEO RECORDER

SVR-5116

- 1 month recording on 1 HDD with MPEG4 (160GB)
- 480/120fps of high picture quality image display/recording
- Superior reliability guaranteed by Samsung
- Powerful network surveillance based on integrated software
- User-friendly GUI menu
- Comes with CD-RW for simple data back-up

SAMSUNG

Improved high performance DVR for your security and convenience!



The SVR-5116 is a high performance PC based 16 channel MPEG4 digital video recorder with all the advantages of a PC platform ; including user convenience, superior extension and a powerful remote control network function.

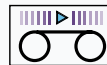
The SVR-5116 is an effective and reliable security system which will benefit all users.

High Picture Quality Surveillance / Recording / Playback / Retrieval

16 Channel High Picture Quality Surveillance (480fps)

It can display a maximum 480fps of high quality pictures and store 120fps of digital images.

480fps



16 Channel Display

Powerful MPEG4 Allows 1 Month Recording on 1 HDD (160GB)

1~3KB of high compression and high picture quality for every image is achieved via MPEG4 based independent video compression technology.

* When using a camera with the SSNR chip, the compression effects improves in all lighting environments. (SHC-730, SHC-721A, SDC-415, SID-450, etc)

160GB	Ultra High Resolution or Video with a lot of movement (10 kb)	High Resolution or Video with average movement (5 kb)	Medium Resolution or Video with no movement (2 kb)	Low Resolution or Video with no movement (1 kb)
16fps (1fps per channel)	12.1 days	24.3 days	60.7 days	121.4 days
32fps (2fps per channel)	6.1 days	12.1 days	30.3 days	60.7 days
80fps (5fps per channel)	2.4 days	4.9 days	12.1 days	24.3 days

* Recording periods can vary depending on monitoring conditions and environments.

Efficient Data Base Storage Structure

Independent Data Base method storage structure enhances data playback / retrieval.



Convenient User Interface

Easy and Convenient GUI (Graphic User Interface)

The convenient menu screen is easy enough even for a beginner.



SVR Monitor

Real-time surveillance / recorded program

- 16 channel maximum 120 fps recording
- Dual recording schedule mode
- Audio recording function



SVR Playback

Recorded data retrieval / playback

- Immediate retrieval for each camera (Day / Time)
- 16 channel simultaneous high speed retrieval
- Multi-channel simultaneous playback / Panorama playback
- Storage, print, bookmark function



Web Viewer

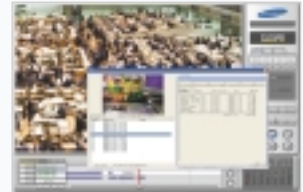
Web based monitoring program

- Real-time surveillance of 16 long-distance areas
- Program with security certification
- PTZ control and image correction functions

ATM / POS Text Record Function

It can save text information and corresponding images together by linking it with ATM and POS equipment in order to provide thorough surveillance.

ATM/POS



Convenient Network Connection and Multi-Control Function

Dynamic/Public IP connection and network transmission of 120fps image can be achieved. Real-time image transmission from long-distance areas, recorded data retrieval and file back-up can be done simultaneously via special software or the Web.

Convenient Data Back-up

CD-RW is built-in and the UBS port is located in the front of the product, which makes data back-up faster and easier. It supports various back-up instruments including DVD-RAM and external USB instruments.



System Reliability

Hardware Watch-Dog Function

It executes re-booting automatically in case of system failure and power cuts.

Built-in Fire wall Program

The built-in independent fire wall blocks viruses from outside.

Falsification/Modulation Block via Independent Watermarking Technology

Encryption method with interconnecting structure completely blocks off falsification/modulation of stored data.

Timing Error Prevention (Time Sync)

DVR timing error is prevented by a function that synchronizes it with the time server.

16-CHANNEL PC BASE DIGITAL VIDEO RECORDER

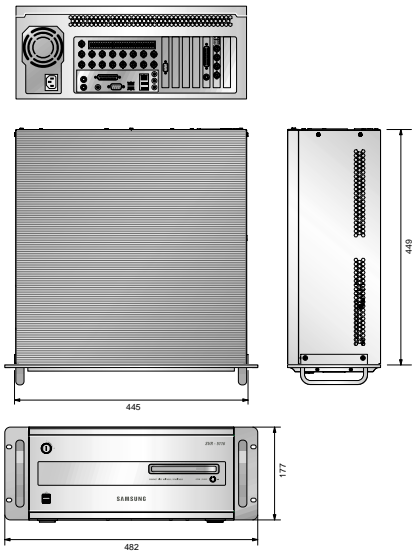
SVR-5116



Specifications

Model	SVR-5116	
	NTSC	PAL
Video Input	Composite 16 BNC	
Video Output	Composite : 5 BNC (Multi Spot 1 + Sequence Spot 4) / RGB: 1VGA / SVHS : 1Y/C	
Video Split	1, 4, 7, 9, 10, 16 Auto Sequence	
Resolution	640 x 480, 640 x 240, 320 x 240, 160 x 120	640 x 576, 640 x 288, 320 x 288, 160 x 144
Sensor Output	16 TTL Output	
Audio Input	1 line Input	
Audio Output	1 line Output	
Recording Speed	120fps	100fps
Display Speed	480fps	400fps
Storage	Standard : EDIE HDD 160GB (Max. 3 HDDs) / CD-RW (52X) Option : USB HDD, USB CD-RW, DVD RAM, SCSI HDD	
OS	Windows XP (E)	
CPU / RAM	Pentium 4 2.4 GHz / 256M DDR	
Compression	Modified MPEG4	
Compression Rate	1-3 KB (320 x 240 Normal quality)	
Network Transmission	Max. 120 frame/sec	Max. 100 frame/sec
Record Mode	Time-lapse, Event, Time-lapse + Event record	
Interface	10/100 Base Ethernet (RJ-45)	
Network Protocol	TCP/IP, DHCP, PPPoE	
Network Software	SVR Manager, Web Viewer (Support Internet Explorer)	
PTZ Interface	RS-232/485	
USB Port	6 USB Connector (Front 2, Rear 4)	
Printer Port	1 Parallel port	
Motion Detection	Built-in	
System Protection	Watch-Dog	
Back up File	JPG, BMP, AVI	
Dimension	482(W) x 177(H) x 449(D)mm	
Weight	14.7 kg	

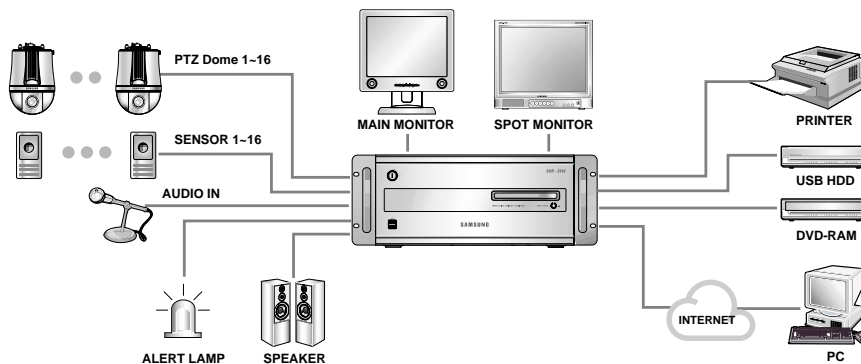
Dimensions



Rear Panel



System Configuration



www.samsungcctv.com

Design and specifications are subject to change without notice.



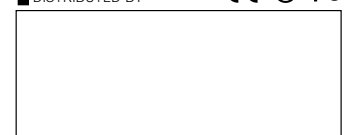
SAMSUNG TECHWIN CO., LTD.
145-3, Sangdaewon 1-dong, Jungwon-gu,
Seongnam-si, Gyeonggi-do 462-703, Korea
Tel : +82-31-740-8137-8141 Fax : +82-31-740-8145

SAMSUNG TECHWIN MOSCOW OFFICE
Korp 14, 37-A, PR-KT, Leningradsky,
Moscow 125167, Russia
Tel : +7-95-258-9296, 9298 Fax : +7-95-258-9297

SAMSUNG OPTO-ELECTRONICS UK, LTD.
Samsung House, 1000 Hillswood Drive,
Hillswood Business Park Chertsey, Surrey KT16 0PS
Tel : +44-1932-45-5308 Fax : +44-1932-45-5325

TIANJIN SAMSUNG OPTO-ELECTRONICS CO., LTD.
7 Pingchang Rd., Nankai Dist. Tianjin 300190, P.R China
Tel : +86-22-2761-4724(33821) Fax : +86-22-2761-6514

DISTRIBUTED BY



I.D-0602