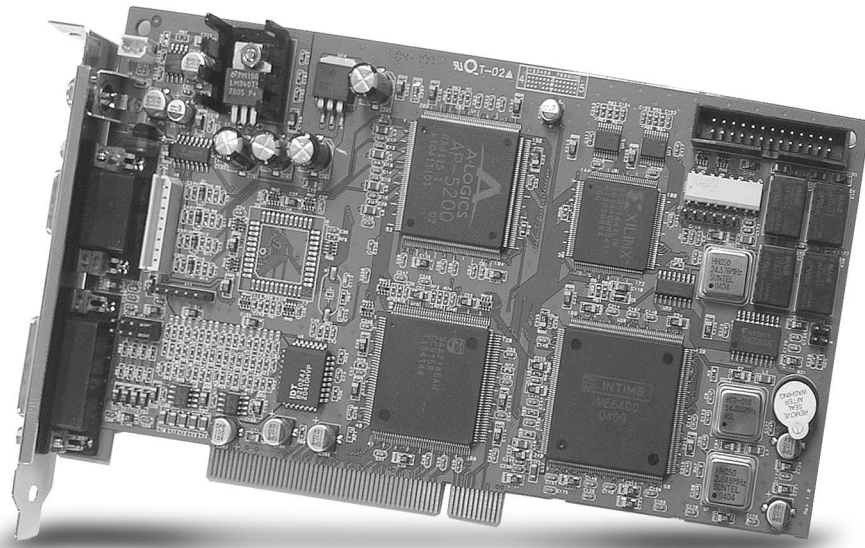


hardware installation instrukcja instalacji



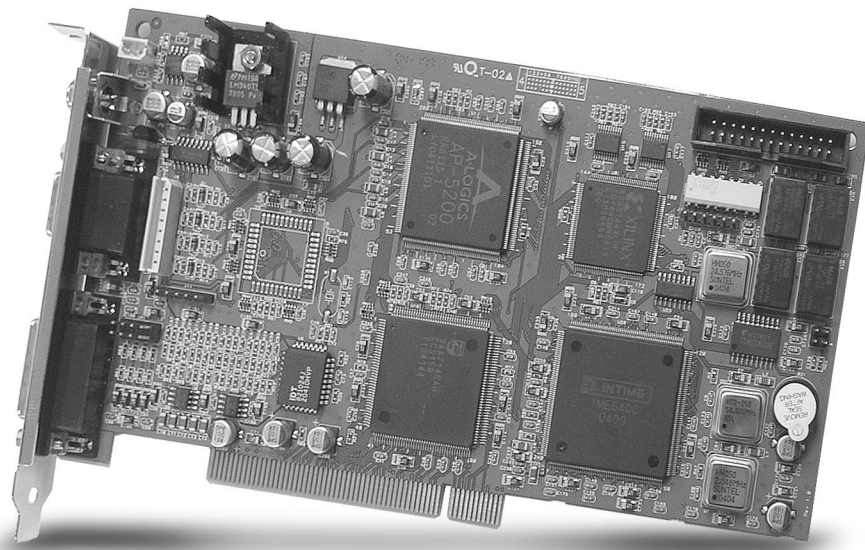
eng

pl

NVB-100/4MPG
NVB-200/8MPG
NVB-400/16MPG

noVus™

hardware installation



eng

NVB-100/4MPG
NVB-200/8MPG
NVB-400/16MPG

noVus™

TABLE OF CONTENTS

1.	IMPORTANT SAFEGUARDS AND WARNINGS.....	5
2.	SPECIFICATION.....	6
3.	MODELS OF CARDS.....	9
4.	ACCESSORY.....	10
5.	DRIVERS INSTALLATION.....	13
6.	SOFTWARE INSTALLATION.....	16

eng

Technical modification are subject to change without prior notice. Misprints reserved.

1. Important Safeguards and warnings:

1. Read, keep, and follow these instructions.
2. Heed all warnings.
3. There are no user-serviceable parts inside this unit. Only authorized service personnel may open the unit.
4. Installation and servicing should only be done by qualified service personnel and conform to all local codes.
5. Unplug the unit from the outlet and refer servicing to qualified service personnel under the following conditions:
 - When the power supply cord or plug is damaged.
 - If liquid has been spilled or objects have fallen into the unit.
 - If the unit has been submerged under water.
 - If the unit does not operate normally by following the operating instructions.
 - If the unit has been dropped or the cabinet has been damaged.
 - When the unit exhibits a distinct change in performance.
6. Unplug the unit from the power outlet before cleaning. Do not use liquid cleaners or aerosol cleaners. Use a damp cloth for cleaning purposes.
7. Do not block any ventilation openings. Install in accordance with the manufacturer's instructions.
8. Do not install near any heat source or near water (any wet area).
9. Only use attachments / accessories specified by the manufacturer.

eng

The product and / or manual may bear the following marks:



This symbol indicates that dangerous voltage constituting a risk of electric shock is present within this unit.



This symbol indicates that there are important operating and maintenance instructions in the literature accompanying this unit.

This product is carrying the CE-mark in accordance with the related European Directives. Responsible for CE-marking is Novus Security sp. z o.o.

2. Specifications:

Model		NVB-100/4MPG (one board)	NVB-200/8MPG (one board)	NVB-400/16MPG (two board)
1	Camera Input	4	8	16
2	Audio In	4	8	16
3	Sensor Input	4	8	16
4	Relay Out	4	4	8
5	Composite Out	1 channel (switching, but selectable)		2 channel (same)
6	Compression Codec	MPEG-4 Hardware Codec		
8	Display Fr. Rate	Real Time Live (352 x 288)		
9	Fr. Rate at Record. Mode			
	352 x 288	25 fps/ch	25 fps/ch	25 fps/ch
	704 x 288	6.25 fps/ch	6.25 fps/ch	6.25 fps/ch
	704 x 576	6.25 fps/ch	6.25 fps/ch	6.25 fps/ch
10	Encoded File Size	0.7 - 5 KB/frame (352 x 288)		
11	Image format	YUV		
12	Searching			
	Main DVR	Local Searching (Image and audio)		
	Remote PC	Remote and Local Searching (Image)		
	Web (over Internet)	Remote Search		
13	Back-Up			
	Media	DAT, CD, DVD, Network Drive		
	Saving (moving image)	AVI (Special) from backup viewer (main), AVI from search (remote),		
	Saving (static image)	JPEG from search, backup viewer		
	Web (over Internet)	AVI Back up		
14	Remote Connections			
	Modem	PSTN, ISDN		
	TCP/IP	Cable Modem, DSL, Ethernet		
15	PTZ Interface	RS232/RS422/RS485		
	Availability	Main DVR, Remote PC, Web Search over internet		
16	Other features			
	Motion Detection	Hardware motion Detection		
	Image Security	WaterMark		
	Application software	POS , Access control , ATM , PDA etc		
	Protect System	Hardware Watchdog		
	Backup Viewer	Viewer of Backup Data stored other place		
	Quick Viewer	Emergency Data Recovery		
	DB Tool	Generating Index for Removed HDD to other machine		
17	Compatible system			
	CPU	Equivalent. or more than Pentium IV- 1.8 GHz		
	Main Board	Intel, ASUS, GigaByte Main board equipped with Intel 845PE, 865 Chipset		
	RAM	512 MB		
	VGA	Later than ATI 7500		

eng

Features

1. **4, 8, 16 Camera Inputs / Output**
 - Normal input condition: 75 Ohm, 1 Volt (p-p)
2. **1~16 Sensor Inputs**
 - As default,
 - Additional power supply of DC 12 Volts must be provided for sensor operation.
3. **1~16 Digital Outputs (Relay Outputs)**
 - As default,
 - Additional power supply of DC 12 Volts must be provided for relay operation.
4. **Sound Recording and Two Way Communications Capabilities**
 - 16 channel sound recording.
 - Each channel can have two way of communication, one by one channel.
5. **Multi-Viewing**
 - The multi viewing is applicable to one of 1, 4, 6, 9, 10, 16 camera views including the enlarging screen feature.
6. **PAN/TILT/ZOOM/FOCUS Capabilities**
 - You can control the camera by the DiViS program just like manipulating the camera by controller, if the camera supports PTZ control, of course.
7. **Auto Rebooting System**
 - When DiViS DVR system detects a malfunction in the system and this feature is set to enable, the system automatically reboots and corrects the malfunctions. This is so called Watch-dog feature.
8. **Motion Detection and Sensor Trigger**
 - It is possible to record images only when movements are detected, which permits you to exclude storage of unnecessary recording. Consequently, you can optimize the usage of storage disc space.
9. **Scheduled recording**
 - You can schedule the recording in accordance with program you made.

10. Data Backup and Auto Backup

- Data Backup can be transferred to different media like DAT, CD, or DVD. User can select the data backup of the specific camera. Also specific image can be acquired from video clip of the designated date and time. And just like the scheduled recording, the scheduled backup program can be preset and utilized.

11. Digitalized Video Search

- Recorded data can be played back. One or multiple cameras views of the designated time can be viewed. By inputting date and time user can ,not only, retrieve single image from the video, but also save it separately and print it out.

12. Network Support (TCP/IP , ISDN ,PSTN Support)

- With network software, you can log in DiViS-main remotely to search and save the video data locally, and even change the settings of the operating programs.

eng

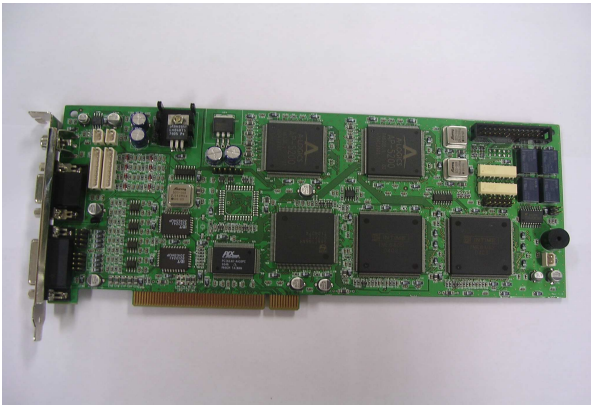
3. Models of cards:

1. NVB-100/4MPG



eng

2. NVB-200/8MPG



3. NVB-400/16MPG



4. Accessory:

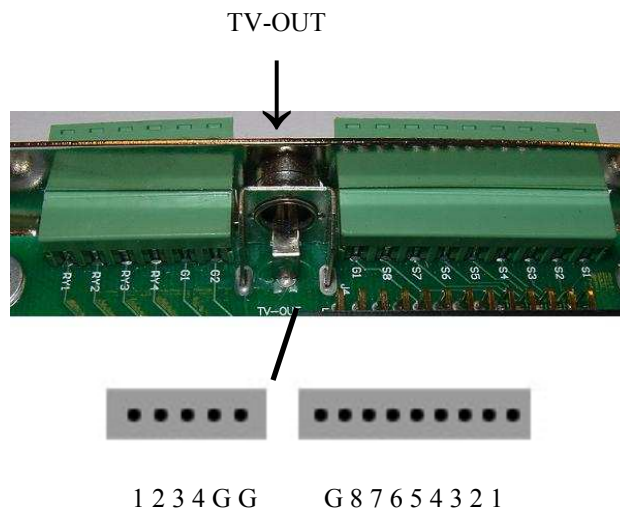
1. Video Input



2. Audio Input

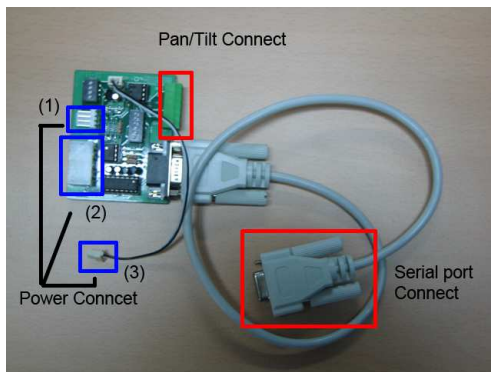


3. TV-Out, Sensor, Relay

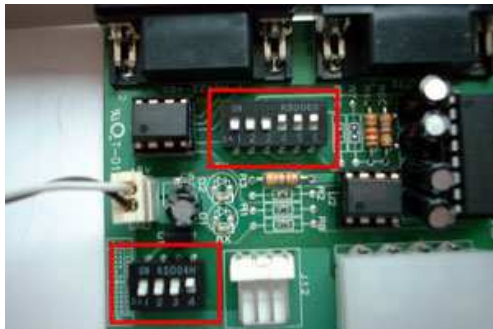


4. RS-232 to RS-422/RS-485 Converter:

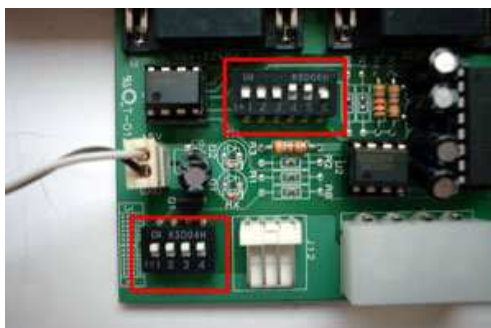
This is the converter for controlling of Pan/Tilt Device.



1. Connect the cable to computer serial Port.
2. You can select one of the three Power connectors.
 - 1 : Power from Capture Board(+5V) 1
 - 2 : Power from System Power Supply 2
 - 3 : Power from System Power Supply 3
3. Connect data line from camera to this port.
4. Set the jumper switch as guidance for RS-422 Pan/Tilt



5. Set the jumper switch as guidance for RS-458 Pan/Tilt



eng

6. In case of RS232 Pan/tilt port , connect directly to RS232 port of the system.
7. RS-422/485 Pin number port



RS-422/485 Connector	
Pin name	Pin number
- TxData	2
+ TxData	3
- RxData	4
+ RxData	5
Signal	1.5

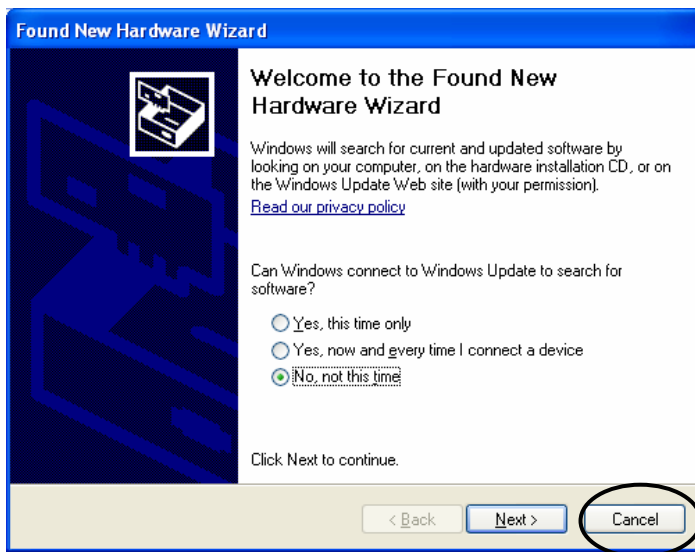
eng

5. Drivers Installation:

INSTALATION NOTES:

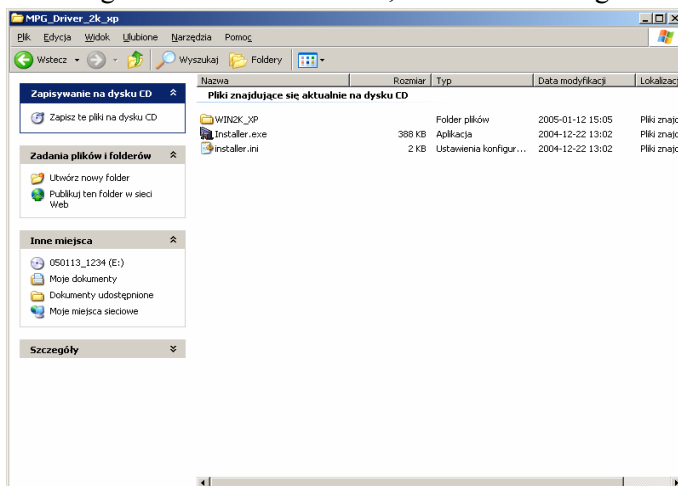
1. Intel Chipset mother board are recommended
 - Not compatible with mother boards that are specifically designed such us for Small Form Factor (SFF-Mobile).
2. Intel Pentium 4 2.4 or higher for CPU are recommended
 - CPU that is lower than Intel Pentium 4 2.4 can reduce the recording frame rate.
 - Recommend Intel Pentium 4 3.0 or higher for 32 channel.
3. 512MB or more of the system memory is recommended
 - Less than 512MB of memory may bring down the overall system performance.
 - 1GB of memory or more is required for 32 channel board.
4. Recommend ATI Radeon 9000 or higher.
 - Using video card lower than ATI Radeon 9000 may affect the recording data.
 - Intel onboard Extreme II VGA is an alternative.
5. 120GB HDD or larger hard drive is recommended.
 - Install the latest Service Pack when using 160GB or larger hard drive.
 - Recommend S-ATA type hard drive for 32 channel.
6. Install Direct X 8.0 or higher.
 - Under Windows 2000, must install Direct X 8.0 or higher for sound recording. (In Windows XP, Direct X 8.0 is installed as default.)
7. Disable screen saver and Standby mode.
 - Turn off System Standby mode.
 - Turn off Screen saver.
 - Turn off all the energy saving feature.

INSTALATION:

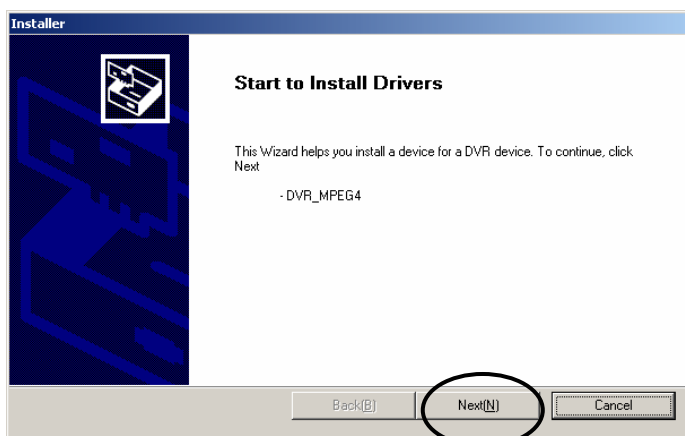


eng

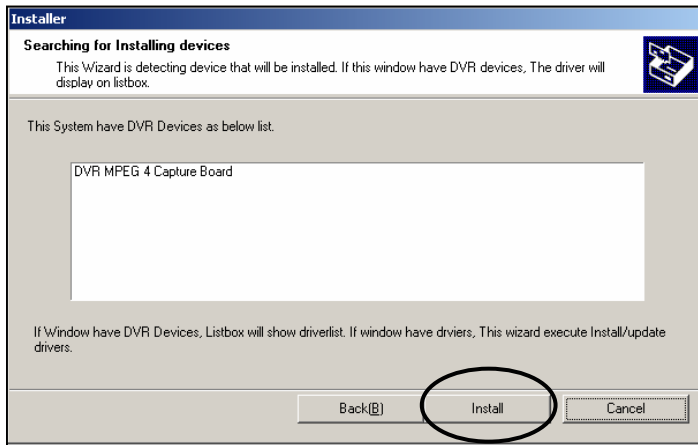
When installing board for the first time, the above message will appear. Click “Cancel”.



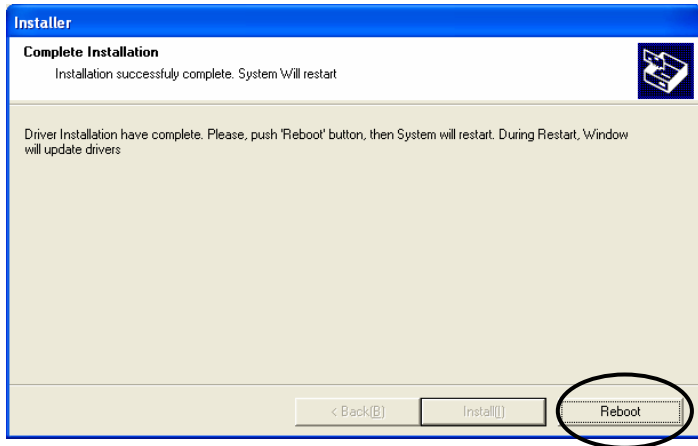
Open Driver folder in CD-Rom and run “Installer”.



Click “Next”.



Click „Install”



When the above picture appears, installation is completed. Click “Reboot” to restart the system.

The drivers for each models of cards:

1. NVB-100/4MPG:

- *DVR MPG 4 Capture Card*

2. NVB-200/8MPG:

- *DVR MPG 4 Capture Card*
- *DVR MPG 4 Capture Card*

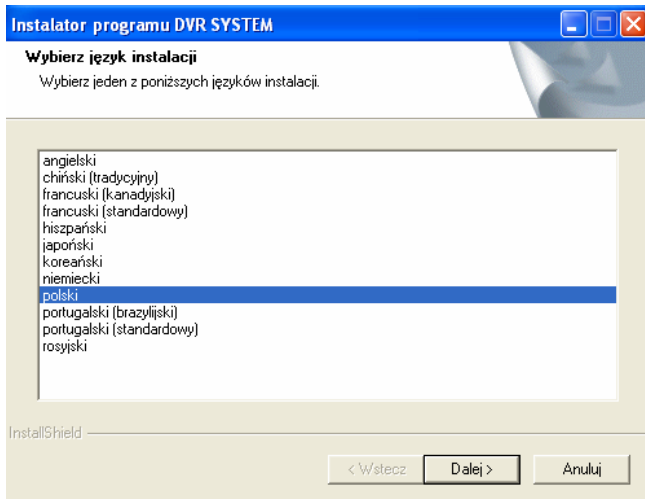
3. NVB-400/16MPG:

- *DVR MPG 4 Capture Card*
- *DVR MPG 4 Capture Card*
- *DVR MPG 4 Capture Card*
- *DVR MPG 4 Capture Card*

6. Software Installation:

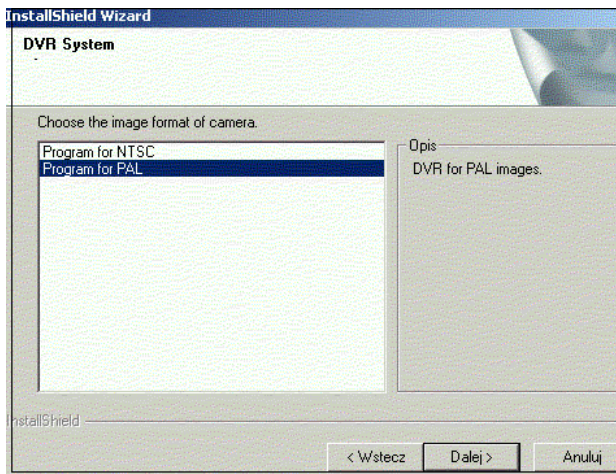
Run “Setup.exe”.

(Choose the language in which to install the program.)

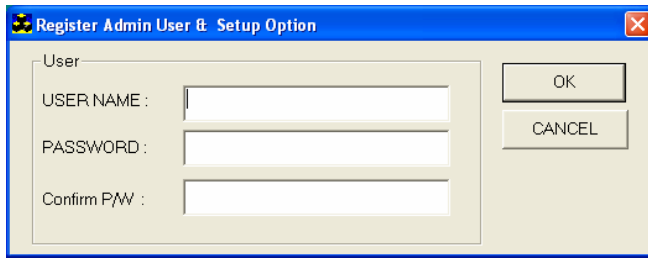


eng

Click “Next”.



Choose the proper media format (NTSC or PAL) and continue by clicking “Next.”



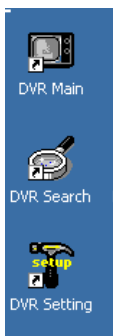
- USER NAME: make top Admin user name;
- PASSWORD: make top Admin user password;
- Confirm P/W: confirm the password;

eng

Once setup of the software has been complete, the system will need to be restarted to allow the settings to take effect.



After rebooting system, you will find above icons on the desktop:



DVR MAIN— main software;

DVR Search — search software;

DVR Setting — setting software

NOVUSTM

NOVUS Security Sp. z o.o.

Pulawska Street 431, 02-801 Warsaw, Poland

phone.: (22) 546 0 700, fax: (22) 546 0 719

www.novuscctv.com