

BEACon™ firmware upgrade

Suprema Inc, BioEntry™, and BEACon™ are registered trademarks of Suprema Inc. All rights reserved. No part of this work covered by the copyright hereon may be reproduced or copied in any form or by any means - graphics, electronic, or mechanical, including photocopying, recording, taping, or information and retrieval systems - without written permission of Suprema Inc. Any software furnished under a license may be used or copied only in accordance with the terms of such license.

Suprema Inc reserves the right to modify or revise all or part of this document without notice and shall not be responsible for any loss, cost or damage, including consequential damage, caused by reliance on these materials.



Copyright © 2006 by Suprema Inc.

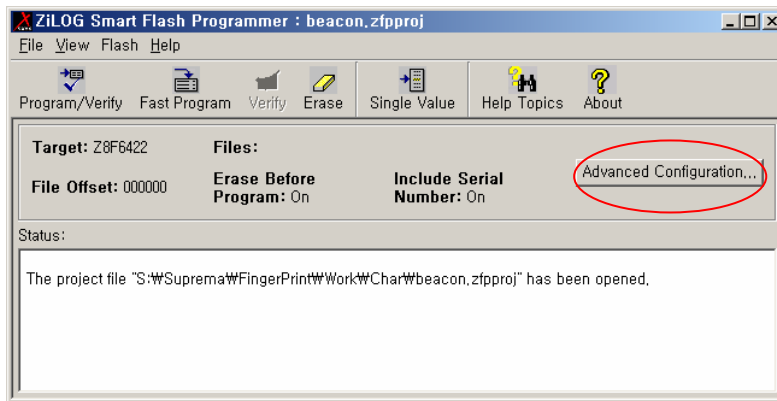


Fig. 1 Execution program

1. When program is executed, you can see the window like Fig. 1. Then you must click "Advanced Configuration...".

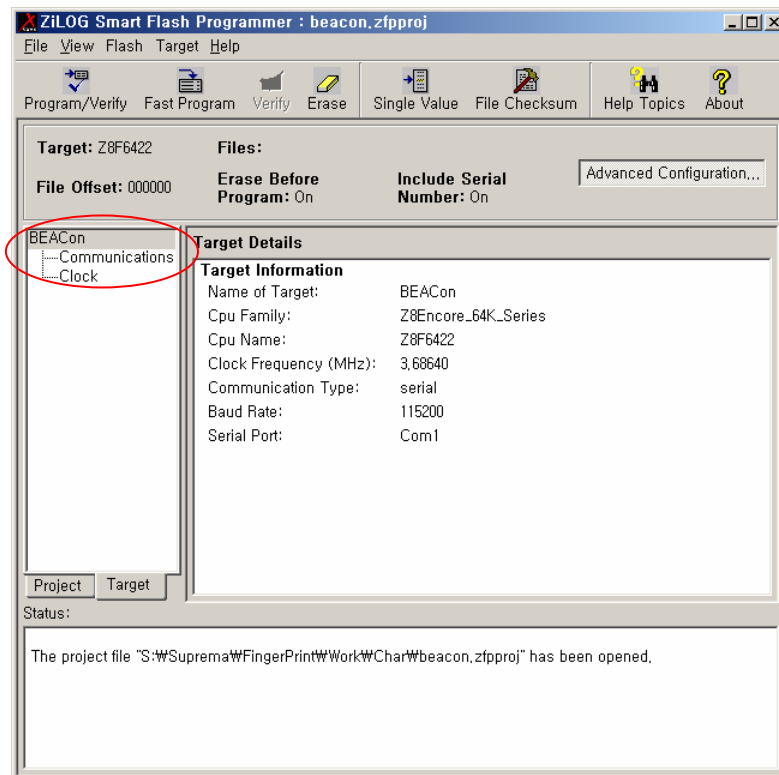


Fig. 2 Target setting

2. On the next step, you must set up target. In the target setting, you can select CPU type, clock freq. and communication type.
 3. In Fig. 2, select "Target" tab in the left pane, then click right button of mouse. Then click

“New Target”.

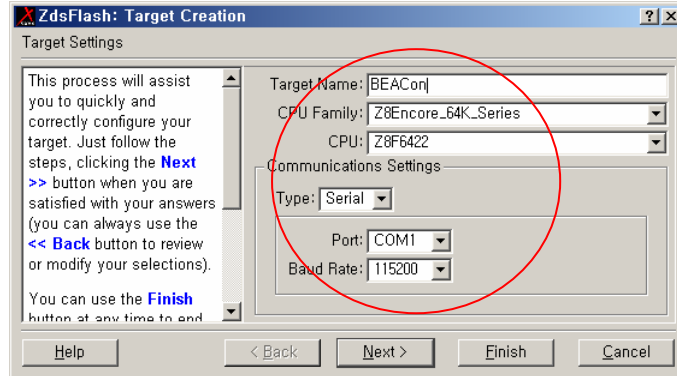


Fig. 3 CPU and communication setting

4. You must set up CPU and communication type like Fig. 3.

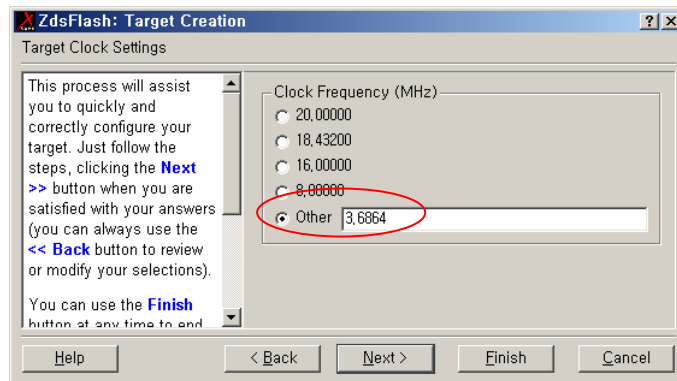


Fig. 4 Clock setting

5. You must set up clock freq. like Fig. 4.

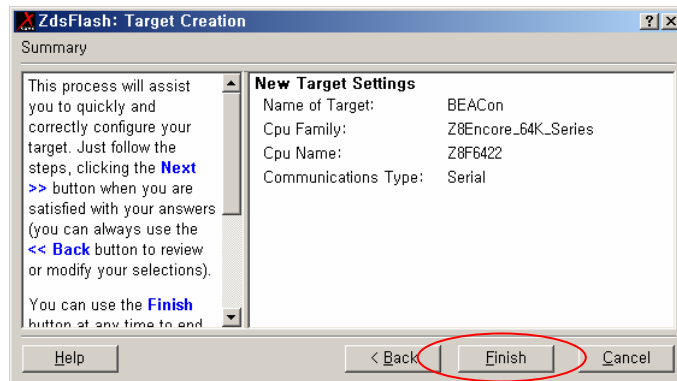


Fig. 5 Finish

6. Then click “Finish” button.

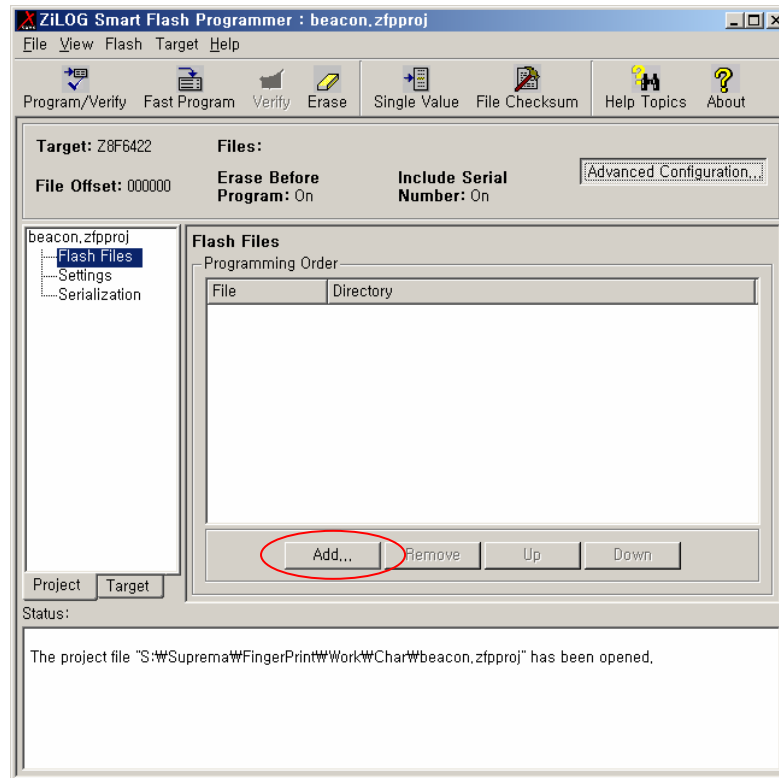


Fig. 6 Select a firmware file

7. In “Project” tab in the left pane, you can select the firmware file.

8. Click “Add...” button. When you see the file selection dialogbox, select the firmware file.

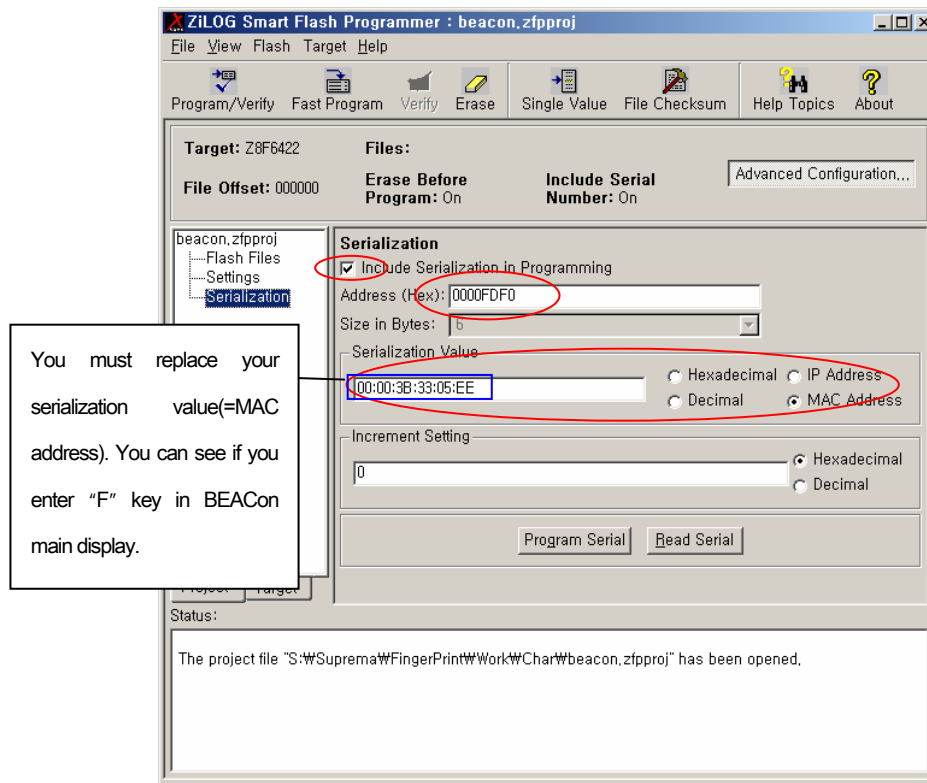


Fig. 7 Serialization setting

9. If you finish the firmware selection, click the "Serialization".
10. You must set up the address and serialization value like Fig. 7.
11. When you click "Program/Verify" and reset BEACon, the firmware upgrade finished.