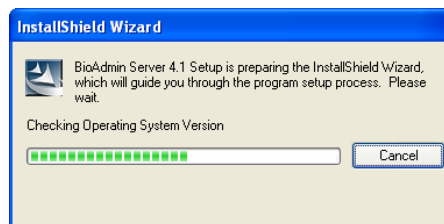
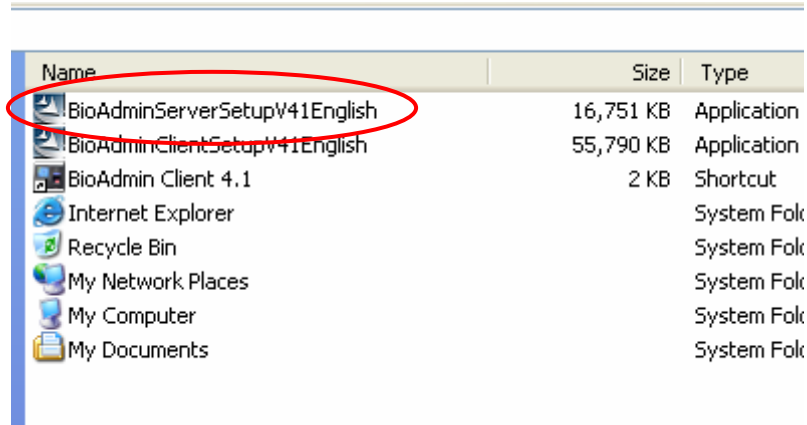


## Easy Installation of BioAdmin V4.1 for Client User Only

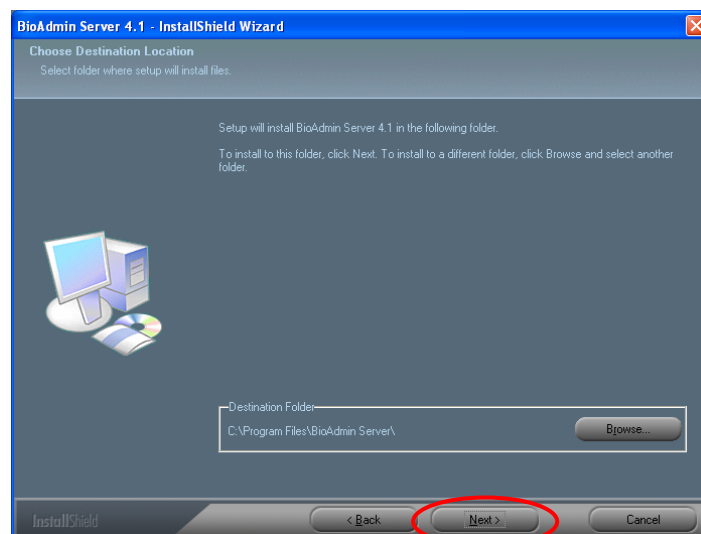
*The BioAdmin V4.1 consists of Server & Client program and this installation is designed to easily access to BioStation device without configuring server program, just by installing it.*

### <BioAdmin Server Installation>

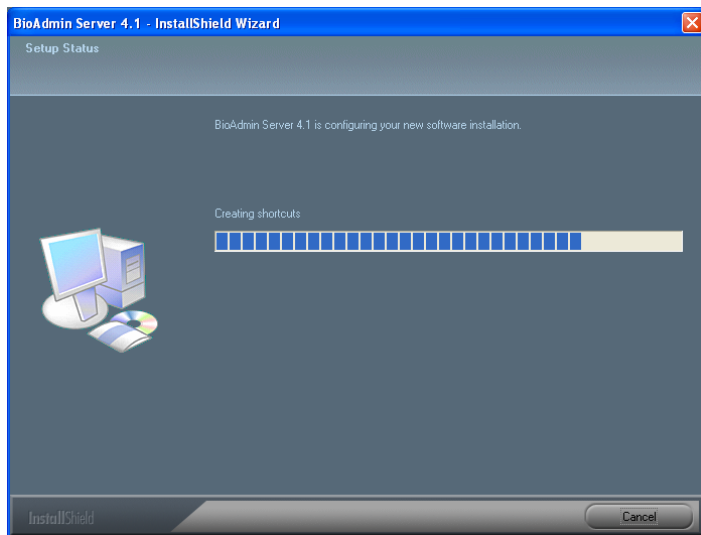
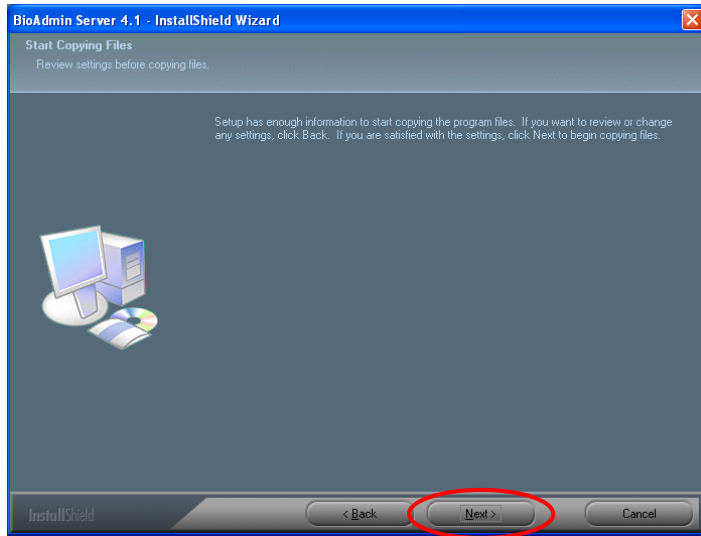
1. Click 'BioAdminServerSetupV41English' to install it.



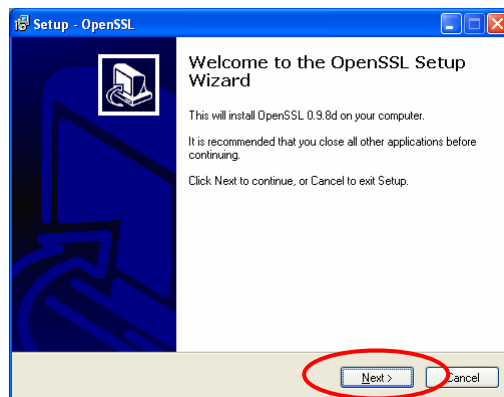
2. Choose the hard disk drive on which BioAdmin Server is to be installed. By default, BioAdmin Server is installed in C:\Program Files\BioAdmin Server and press 'Next' button to continue it.

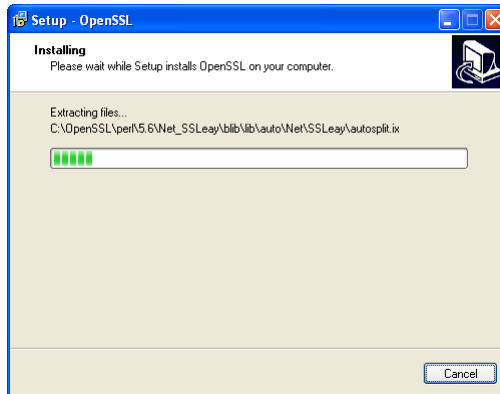


3. Press 'Next' button.

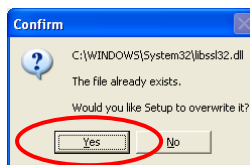


4. After copying all files, set up the Open SSL by clicking 'Next' button.

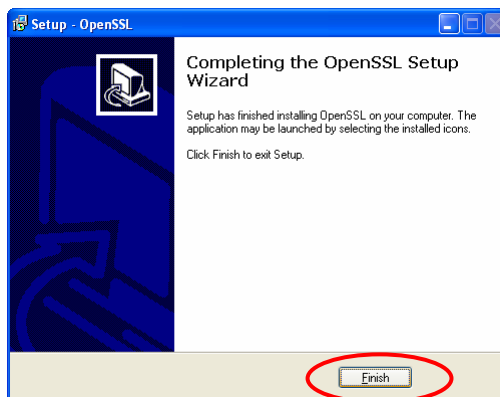




5. Press 'Yes' button to confirm Open SSL installation directory.

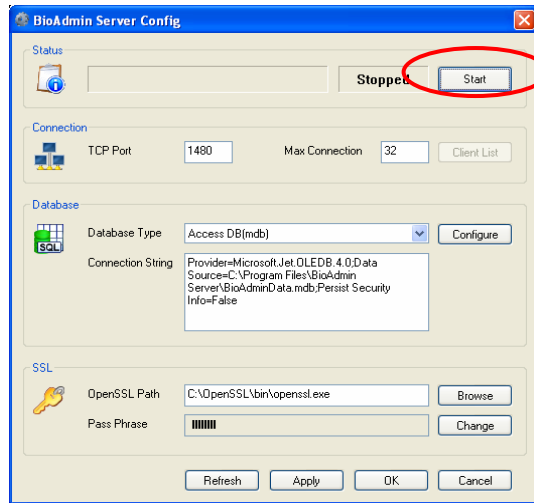


6. Press 'Finish' button to exit setup.

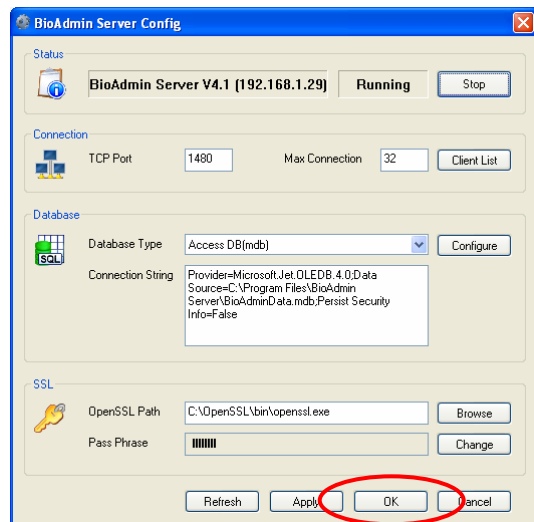


7. After finishing Open SSL set up, following window will appear to set up the BioAdmin Server configuration. In most cases, you can maintain its default value for the BioAdmin Server configuration.

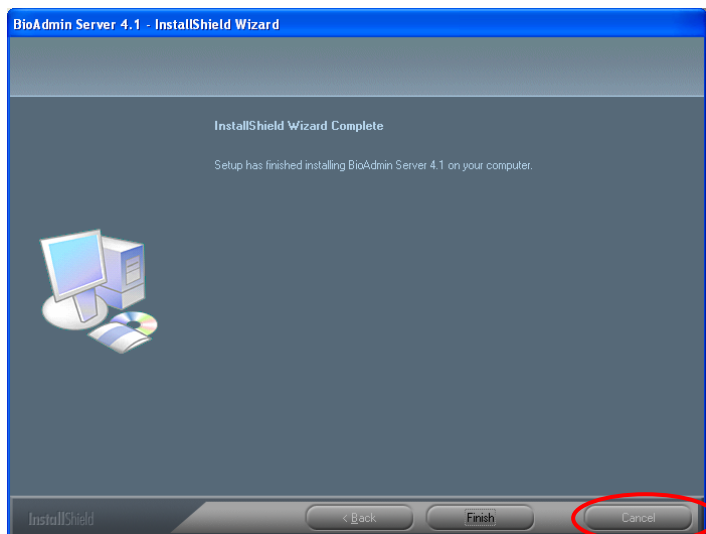
8. Press 'Start' button and



9. If you can see 'Running' shown as below, you can click 'OK' button.

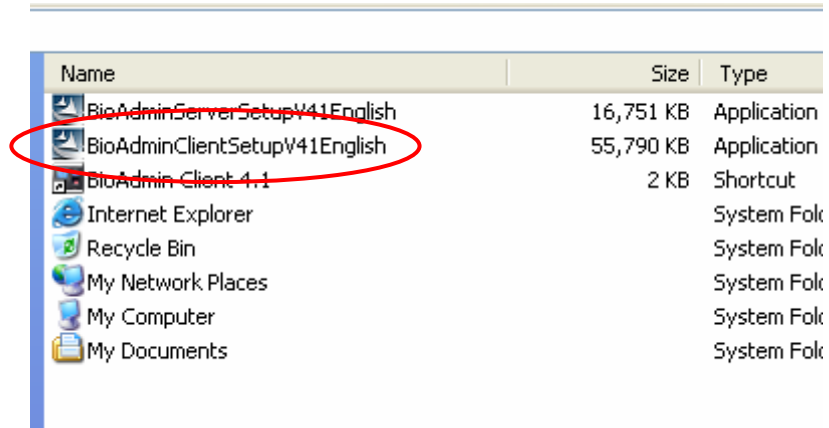


10. Press 'Finish' button to exit it.

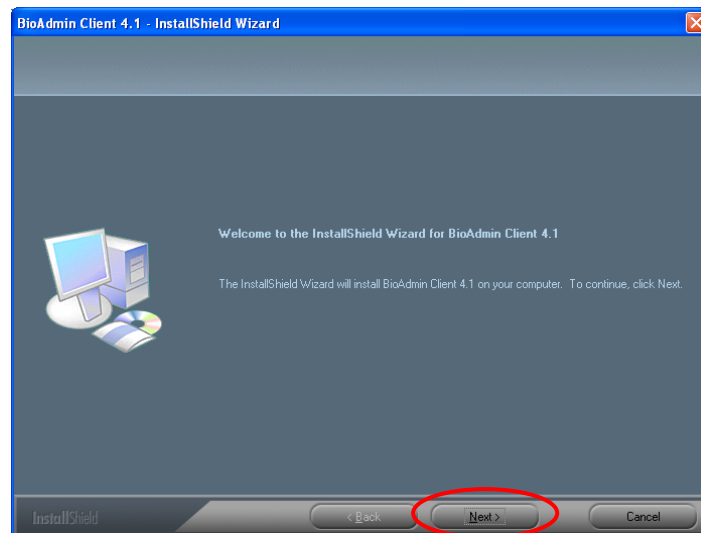
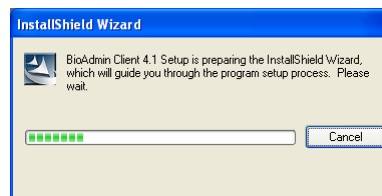


## <BioAdmin Client Installation>

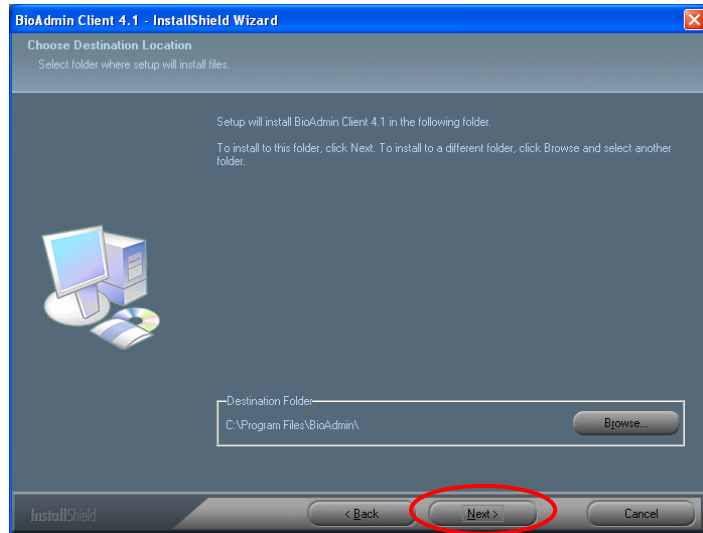
1. Click 'BioAdminClientSetupV41English' to install it.



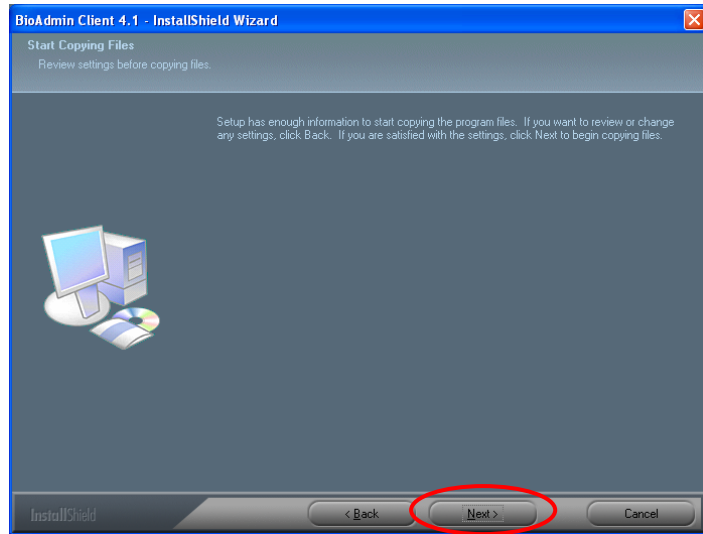
Name	Size	Type
BioAdminServerSetupV41English	16,751 KB	Application
BioAdminClientSetupV41English	55,790 KB	Application
BioAdmin Client 4.1	2 KB	Shortcut
Internet Explorer		System Fol
Recycle Bin		System Fol
My Network Places		System Fol
My Computer		System Fol
My Documents		System Fol



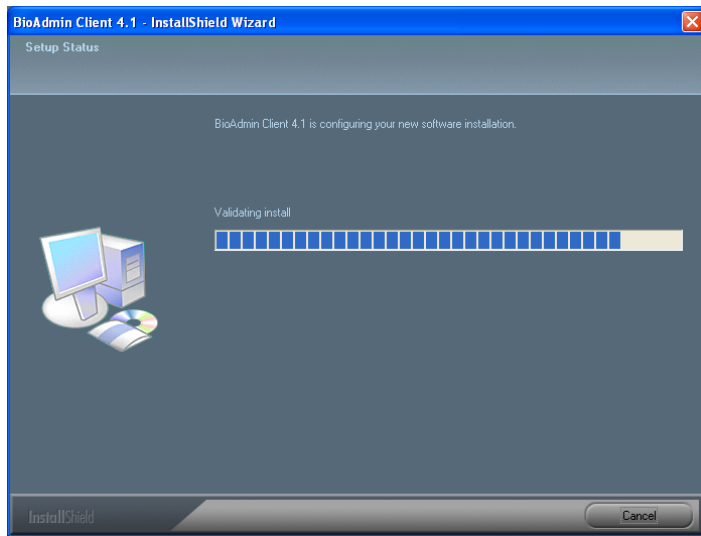
2. Choose the hard disk drive on which BioAdmin Client is to be installed. By default, BioAdmin Client is installed in C:\Program Files\BioAdmin and press 'Next' button to continue it.



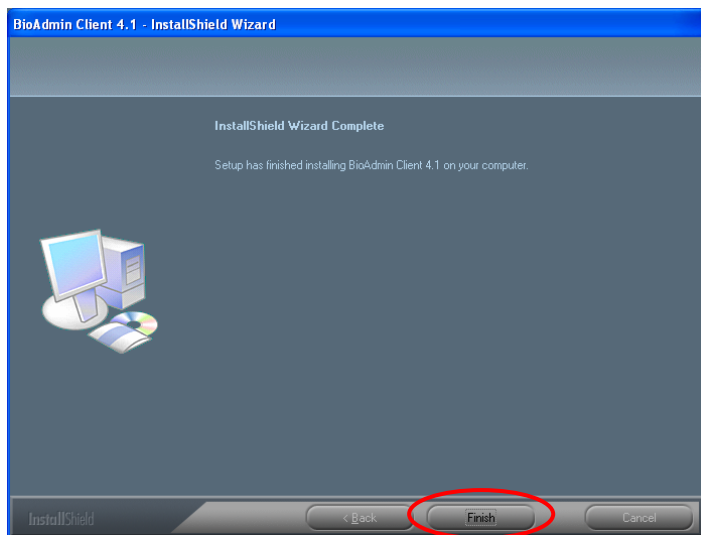
3. Press 'Next' button.



4. Press 'Next' button.



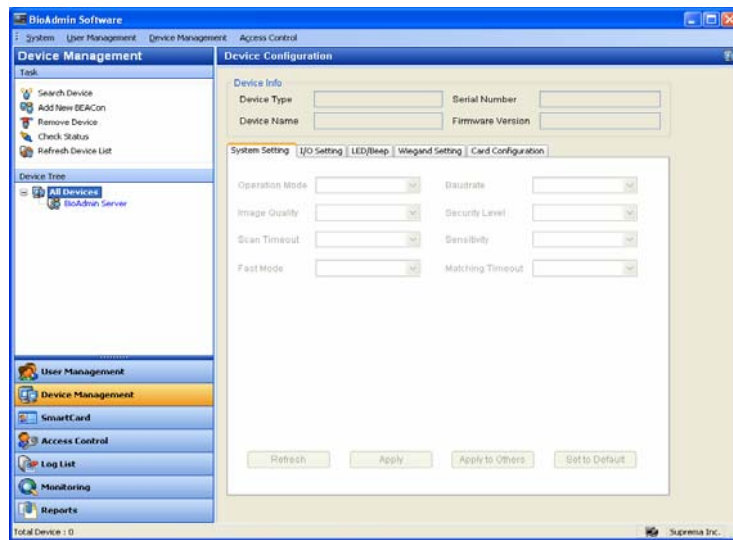
5. Press 'Finish' button to exit it.



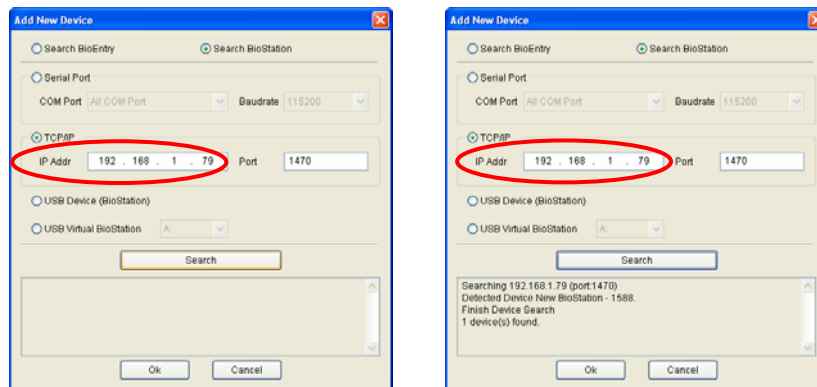
6. Please check BioStation IP address.



7. Run BioAdmin Client and move to “Device Management”.



8. Click ‘Search Device’ and choose network to connect it.



9. Click to ‘Search’ button to detect device and press ‘OK’ button.

