

DoorProtect User Manual

Posted on May 27, 2021



DoorProtect is a wireless door and window opening detector designed for indoor use. It can operate up to 7 years from a pre-installed battery and capable to detect more than one million openings. DoorProtect has a socket for connecting an external detector.



The functional element of DoorProtect is a sealed contact reed relay. It consists of ferromagnetic contacts placed in a bulb that form a continuous circuit under the effect of a constant magnet.

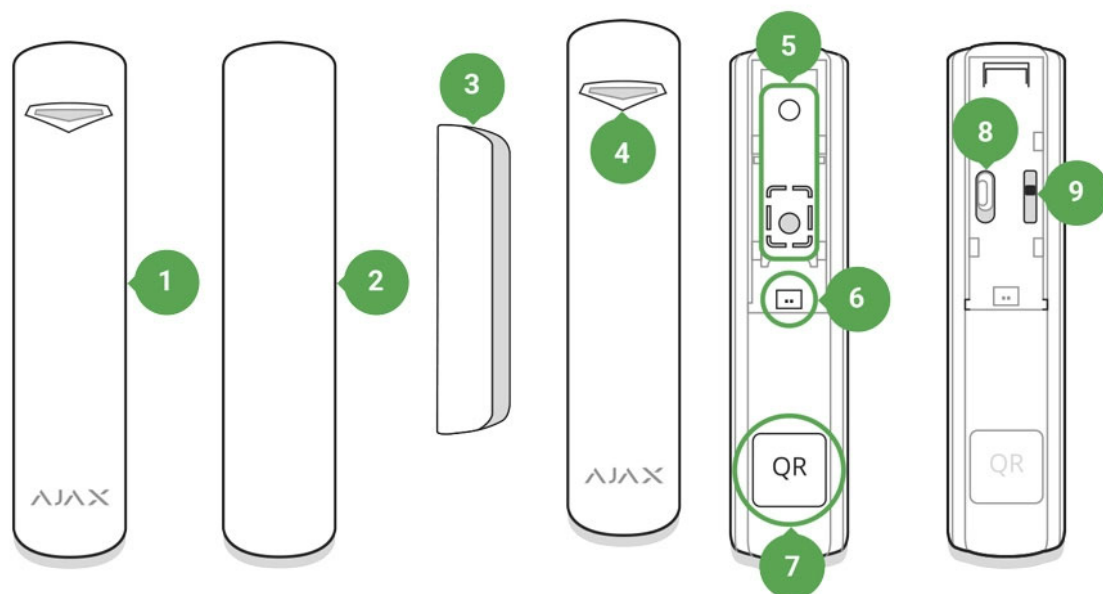
DoorProtect operates within the Ajax security system, connecting via the protected [Jeweller](#) radio protocol. Communication range is up to 1,200 m in the line of sight. Using the [uartBridge](#) or [ocBridge Plus](#) integration modules, DoorProtect can be used as part of third party security systems.

The detector is set up via [Ajax apps](#) for iOS, Android, macOS and Windows. The app notifies user of all events through push notifications, SMS and calls (if activated).

The Ajax security system is self-sustaining, but the user can connect it to the central monitoring station of a private security company.

Buy opening detector DoorProtect

Functional Elements



1. DoorProtect
2. Big magnet (should be placed to the right of the detector)
3. Small magnet (should be placed to the right of the detector)
4. LED indicator
5. SmartBracket attachment panel (perforated part is required for actuating the tamper in case of any attempt to dismantle the detector. Don't break it out!)
6. External detector connection socket
7. QR code
8. Device switch
9. Tamper button

Operating Principle

DoorProtect consists of two parts: the detector with a sealed contact reed relay, and the constant magnet. Attach the detector to the door frame, while the

sealed contact reed relay is within the coverage area of the magnetic field, it closes the circuit, which means that the detector is closed. The opening of the door pushes out the magnet from the sealed contact reed relay and opening the circuit. In such a way, the detector recognizes the opening.



Attach the magnet to the **RIGHT** of the detector.



A small magnet works at a distance of 1 cm, and the big one – up to 2 cm.

After actuation, DoorProtect immediately transmits the alarm signal to the hub, activating the sirens and notifying the user and security company.

Pairing the Detector

Before starting pairing:

1. Following the hub instruction recommendations, install the [Ajax app](#) on your smartphone. Create an account, add the hub to the app, and create at least one room.
2. Switch on the hub and check the internet connection (via Ethernet cable and/or GSM network).
3. Make sure that the hub is disarmed and does not update by checking its status in the app.

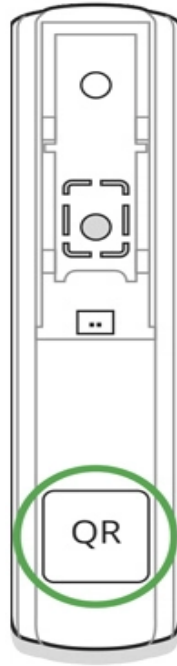


Only users with administrator rights can add the device to the hub.

How to pair the detector with the hub:

1. Select the **Add Device** option in the Ajax app.

and packaging), and select the location room.



3. Select **Add** – the countdown will begin.

4. Switch on the device.



For detection and pairing to occur, the detector should be located within the coverage area of the wireless network of the hub (at the same facility).


The request for connection to the hub is transmitted for a short period of time at the moment of switching on the device.

If the detector has paired with the hub, it will appear in the list of devices in the Ajax app. The update of the detectors statuses in the list depends on the detector ping interval set in the hub settings. The default value is 36 seconds.

Connecting to Third-Party Systems

To connect the detector to a third-party security central unit using the [uartBridge](#) or [ocBridge Plus](#) integration modules, follow the recommendations in the user manual of the respective device.

States

1. Devices 

2. DoorProtect

Parameter	Value
Temperature	The temperature of the detector. The temperature is measured on the processor and changes gradually
Jeweller Signal Strength	The signal strength between the hub and the detector
Battery Charge	Battery level of the device. Displayed as a percentage How battery charge is displayed in Ajax apps
Lid	The tamper state, which reacts to detachment or damaging of the detector body
Delay When Entering, sec	The delay time when entering
Delay When Leaving, sec	The delay time when exiting
Rex	Indicates if the detector is routed through a radio signal range extender
Connection	The connection status between the hub and the detector

Always Active	If active, the detector is always in the armed mode
Temporary Deactivation	<p>Shows the status of the device temporary deactivation function:</p> <ul style="list-style-type: none"> ● No – the device operates normally and transmits all events. ● Lid only – the hub administrator has disabled notifications about triggering on the device body. ● Entirely – the device is completely excluded from the system operation by the hub administrator. The device does not follow system commands and does not report alarms or other events. ● By number of alarms – the device is automatically disabled by the system when the number of alarms is exceeded (specified in the settings for Devices Auto Deactivation). The feature is configured in the Ajax PRO app. ● By timer – the device is automatically disabled by the system when the recovery timer expires (specified in the settings for Devices Auto Deactivation). The feature is configured in the Ajax PRO app.
Firmware	The detector firmware version
Device ID	The device identifier

Setting Up

1. Devices 

2. DoorProtect

3. Settings 

Delay When Entering, sec	Setting the delay time when entering
Delay When Leaving, sec	Setting the delay time on exit
Delays in Night Mode	Delay turned on when using night mode
Arm in Night Mode	If active, the detector will switch to the armed mode when using the night mode
Alarm LED indication	<p>Allows you to disable the flashing of the LED indicator during an alarm. Available for devices with firmware version 5.55.0.0 or higher</p> <p><u>How to find the firmware version or the ID of the detector or device?</u></p>
Primary Detector	If active, DoorProtect primarily reacts to opening/closing
External contact	If active, the detector registers external detector alarms
Always active	If active, the detector always registers opening/closing
Alert with a siren if opening detected	If active, <u>sirens added to the system</u> are activated when the opening detected
Activate the siren if an external contact opened	If active, <u>sirens added to the system</u> are activated during an external detector alarm
Jeweller Signal Strength Test	Switches the detector to the signal strength test mode
Detection Zone Test	Switches the detector to the detection area test
Attenuation Test	Switches the detector to the signal attenuation test mode (available for detectors with firmware version 3.50 and later)
	<p>Allows the user to disconnect the device without removing it from the system.</p> <p>Two options are available:</p> <ul style="list-style-type: none"> ● Entirely – the device will not execute system commands or participate in

	<p><u>deactivation of devices</u></p> <p>The system can also automatically deactivate devices when the set number of alarms is exceeded or when the recovery timer expires.</p> <p><u>Learn more about auto deactivation of devices</u></p>
User Guide	Opens the detector User Guide
Unpair Device	Disconnects the detector from the hub and deletes its settings

Indication

Event	Indication	Note
Switching on the detector	Lights up green for about one second	
Detector connecting to the <u>hub, ocBridge Plus</u> and <u>uartBridge</u>	Lights up for a few seconds	
Alarm / tamper activation	Lights up green for about one second	Alarm is sent once in 5 seconds
Battery needs replacing	During the alarm, it slowly lights up green and slowly goes out	Replacement of the detector battery is described in the <u>Battery Replacement</u> manual

Functionality Testing

The Ajax security system allows conducting tests for checking the functionality of connected devices.

Attenuation Test

Installing the Detector

Selecting the location

Location of DoorProtect is determined by its remoteness from the hub and presence of any obstacles between the devices hindering the radio signal transmission: walls, inserted floors, large objects located within the room.



The device developed only for indoor use.



Check the signal level at the installation location

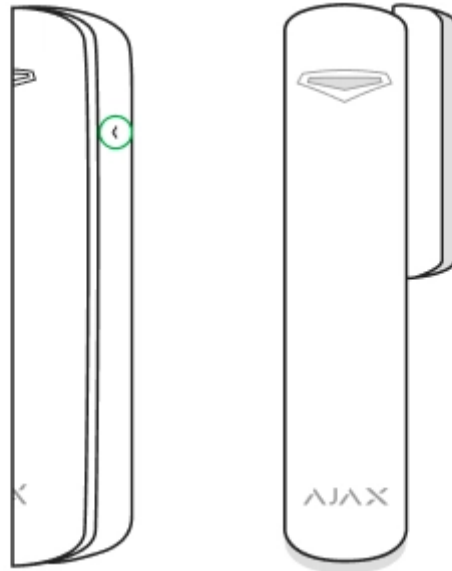
If the signal level is low (one bar), we cannot guarantee stable operation of the security system. Take all possible measures to improve the quality of the signal! As a minimum, move the device – even 20 cm shift can significantly improve the quality of the reception.

If, after moving, the device still has a low or unstable signal strength, use the ReX radio signal range extender.

The detector is located either inside or outside of the door case (window frame).

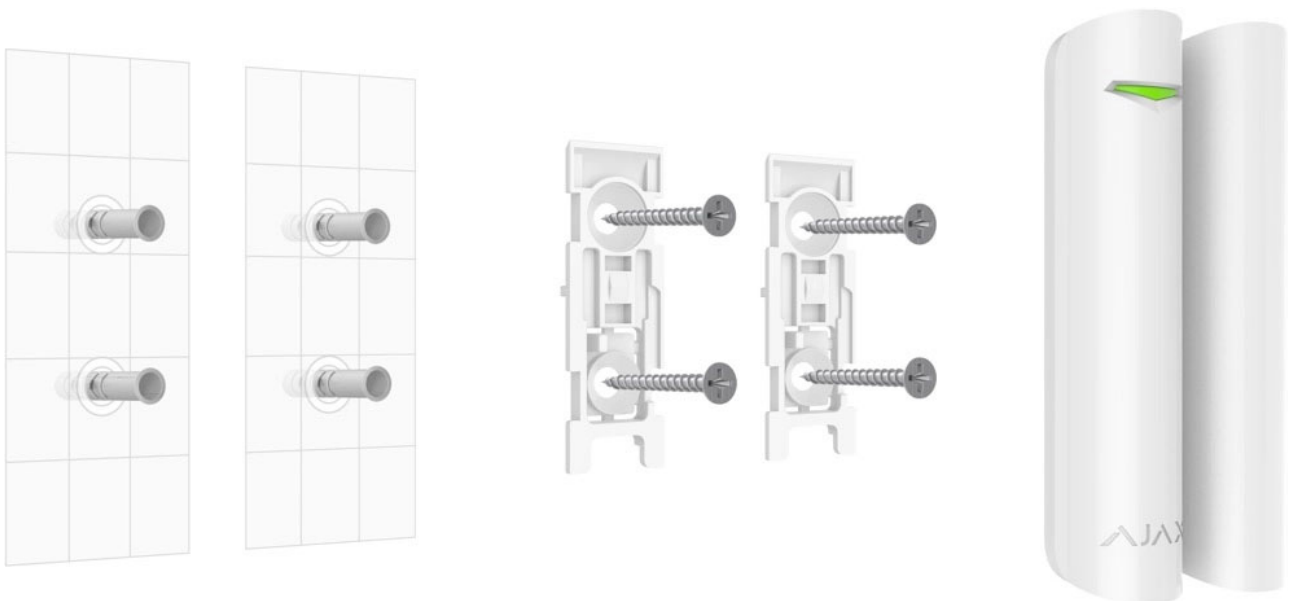
When installing the detector in the perpendicular planes (inside the case/frame), use the small magnet. The distance between the magnet and detector should

horizontally.



Installing the detector

Before installing the detector, make sure that you have selected the optimal location and it complies with the guidelines of this manual!



1. Fix the SmartBracket attachment panels and the magnet using the bundled

2. Put the detector on the attachment panel. As soon as the detector is fixed in SmartBracket, it will blink with a LED signaling that the tamper is closed.



If the light indicator do not blink after installing in SmartBracket, check the status of the tamper in the Ajax app and then the fixing tightness of the panel.

If the detector is torn off from the surface or removed from the attachment panel, you will receive a notification.

3. Put the magnet on the attachment panel.

Do not install the detector:

1. outside the premises (outdoors);
2. nearby any metal objects or mirrors causing attenuation or interference of the signal;
3. inside any premises with the temperature and humidity beyond the permissible limits;
4. closer than 1 m to the hub.

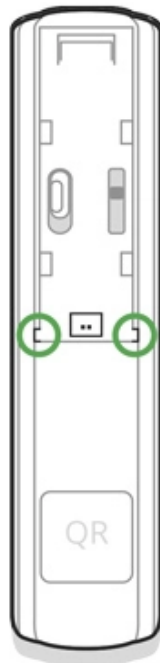
Connecting a Third-Party Wired Detector

A wired detector with the NC contact type can be connected to DoorProtect using the outside-mounted terminal clamp.



We recommend to install a wired detector at a distance not exceeding 1 meter – increasing the wire length will increase the risk of its damage and reduce the quality of communication between the detectors.

To lead out the wire from the detector body, break out the plug:



If the external detector is actuated, you will receive a notification.

Detector Maintenance and Battery Replacement

Check the operational capability of the DoorProtect detector on a regular basis.

Clean the detector body from dust, spider web and other contaminations as they appear. Use soft dry napkin suitable for equipment maintenance.

Complete Set

1. DoorProtect
2. SmartBracket mounting panel
3. Battery CR123A (pre-installed)
4. Big magnet
5. Small magnet
6. Outside-mounted terminal clamp
7. Installation kit
8. Quick Start Guide

Warranty

Warranty for the “AJAX SYSTEMS MANUFACTURING” LIMITED LIABILITY COMPANY products is valid for 2 years after the purchase and does not apply to the pre-installed battery.

If the device does not work correctly, you should first contact the support service – in half of the cases, technical issues can be solved remotely!

[The full text of the warranty](#)

